

**TRUCKS
AND
TRAILERS**

1968 GMC 7500 diesel truck, 33,000 license, low mileage Parkesburg 215-857-3460

1969 Int stainless milk tank truck w/pump, 1,600 gallons, 1978 COE Peterbilt, 350 Cummins, twin screw, 10 spd., new paint. 717-354-4424 Doug or Jack

1973 40' Fontaine drop deck trailer; 1972 42' Timpco spread axle trailer, refrigerated without unit; 1967 4WD Jeep for parts. 717-653-9175

1975 Chevrolet tandem, 318 Detroit, 10SP, 20' solid aluminum van, hoist and blower; 1975 GMC, GVW 33,000, 366 gas, air brakes, 16' aluminum van w/blower and hoist 717-862-3192.

1976 1800 Loadstar Int., 10 wheeler, new 446 gas engine, 5 spd. trans., 2 spd. axle, 16' grain body, 22 ton hoist, excellent 10.00 rubber, unit is sound. R.K. Vogt. 717-653-2510

'70 Ford W1000, twin screw, 250 Cummins, 10 spd. on radials, good condition.

**Esbenshade
Turkey Farm
717-687-7631**

**(2) ALUMINUM
DUMP BODIES**

For Tri-Axle Truck,
16' Long

**Call Zook Molasses Co.
800-662-7464**

**SAVE BIG BUCKS
ON OUR TRUCKS**

**FORD F350 Diesel or Gas
Always In Stock**

EBY ALUMINUM BODIES AVAILABLE

F350 CHASSIS ★ IMMEDIATE
137" OR 161" W.B. DELIVERY

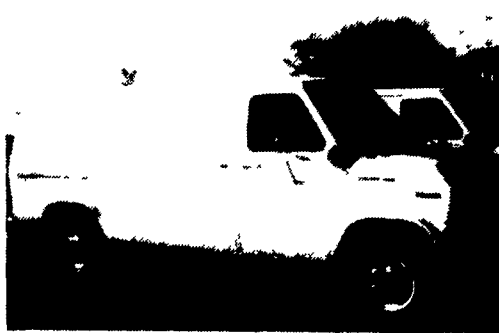
NEW HOLLAND FORD

Route 23, New Holland, PA

717-354-4901 • Toll Free 1-800-642-8605

PARTS HOTLINE 1-800-367-3232

Ford Mon-Fri 8 AM-9PM, Sat 9AM-5PM Isuzu
Heavy Duty Medium Duty



1984 FORD ECONOLINE 250
7600 GVW, 300 CI Engine, AT, PS,
PB, A/C, Only 39,000 Miles
'6,250⁰⁰



1986 CHEV G10 CARGO
5600 GVW, 305, AT, PS, PB,
Only 19,000 Miles
'7,850⁰⁰

FOUR WAY AUTO SALES

P.O. Box 444, R.D. #3
New Holland, PA 17557
(717) 354-3199

**Hostetler Truck
Bodies & Trailers**

Rt. 322 Milroy, PA 17063

717-667-3921

- CLASS III RECEIVER HITCHES **'75.00**
4 ft. UNDERBODY TOOL BOXES . . . **'125.00**
8 ft. TOPSIDE TOOL BOXES **'195.00**
GALVANIZED CATTLE RACKS
Fits all standard 8' pick ups **'295.00**
9 ft. FLATBED TRUCK BODY
Smooth steel floor/bulkhead **'600.00**
ADD-ON CREW CAB
Four extra passengers ride in comfort
with seat belts & heater
Call for Photo **'1,850.00**
USED 2-HORSE TRAILER
Like new - White **'1,850.00**
12 ft. MORITZ HORSE COMBO, TRAILER
Our most popular 12' **'2,450.00**
16 ft. MORITZ LIVESTOCK TRAILER
We have not found a better unit
for this money **'2,795.00**
8'x16' FLATBED BUMPER PULL TRAILER
12,000 G V W - Spare Tire **'2,560.00**
8'x20' FLATBED GOOSENECK TRAILER
12,000 G V W with spare tire **'3,250.00**
1975 FORD LN800
33,000 GVW - Gas 5 & 2 - will take
a 16' body **'4,500.00**
1973 FORD LIVE TANDEM
477 Gas, 10-speed -
will take 20' body **'6,000.00**
1982 FORD F600
Set up for pulling Gooseneck Trailers
in style! - Call for color photo **'10,500.00**

**REAL
ESTATE**

For Sale 116 acre farm,
in Milroy area
717-667-2201 after 6
p.m.

For Sale By Owner
Approximately 140 acre
farm, bank barn set up for
swine, 5,500 bu grain
bin, Mix Mill factory,
40x400 broiler house,
pond, large 2 family
house, Western Schuylkill
Co, PA 717-648-4078

For Sale by owner: Near
Chambersburg, 35 or 48
acres, beautiful building
sites, fantastic view,
1475' road frontage. Also,
good for farming
717-263-8253

For Sale by owner. Near
Chambersburg, 5 to 85
acres with 4 bedroom
stone & aluminum siding
house, 48x72' pole shed,
barn Road frontage,
public sewer & water
717-263-8253.

For Sale: Productive 98
acre hog farm breeding to
market operation, large 9
bedroom remodeled farm-
house ERA Brownstone
Real Estate
717-273-9366

For Sale Well established
layer farm, housing
60,000 hens, fully auto-
mated, perfect location to
markets ERA
Brownstone Real Estate
717-273-9366

FREE CATALOG! Describ-
ing numerous PA farms,
camps, acreage, cottages,
homes and businesses.
Write Dept. LF, WEST
REAL ESTATE AGENCY,
INC, 5528 William Flynn
Highway, Gibsonia, PA
15044 412-443-1200, IN
PA 1-800-922-1235

HOUSE FOR RENT IN
SOUTHERN YORK CO
717-862-3833

If you're looking for a
farm, land or have any
other real estate needs,
you'll find what you want
in the Real Estate classi-
fieds 717-394-3047 or
717-626-1164

Juniata Co 100 acre
dairy or beef farm, 70
acre fertile soil, 15 acres
along Juniata river,
pasture or recreation 7
room house, bath, barn
and silo, machine shed in
good repair, old Route 22
717-436-2466

170A modern equipped
dairy farm with 46 tie-
stalls Large house, and
other out buildings
\$254,000 Call Phil
Ruegg, Realtor,
717-249-7444

217 acre dairy farm in
Harford County, Mary-
land, with 70 cows Avail-
able for rent or operated
on shares. 301-836-9442.

3 acre wooded lot, Lanc
Co., Rapho Township,
Wisegarver Rd. Asking
\$29,500 717-564-1478

65 Acre farm located
between Myerstown and
I-78 62 tillable acres
Very nice farmhouse and
outbuildings. Frontage on
2 paved roads, \$200,000
Call Ken Cehris, RE/MAX
Realtors, 215-670-2770

72 acre Dairy Farm in
Morrison's Cove. House &
barn w/31 tie stalls, pipe-
line milker, bulk tank, 3
silos, gutter cleaner &
meadow w/nice stream
For more information call
814-793-2872

88 ACRE CUMBERLAND
COUNTY DAIRY FARM
100 free stalls w/
computerized feeding,
double six parlor, three
silos, manure storage
Three-car garage and
restored stone house
John B. Niesley, R/E,
717-243-7575 (before 8,
after 5)

FOR SALE 20 acre
woodlot, Anthony Town-
ship, Montour Co., PA
Secluded, excellent hunt-
ing. 607-525-6380

FOR SALE Profitable 13
acre veal farm Barn
holds 200 calves. 3BR
ranch home Located near
Lewistown, PA. Asking
\$88,000 717-899-6430

For Rent 2 bedroom, 1/2
double house, near
Manheim Auto Auction,
\$200/month, security
deposit 717-564-1478

Northern NY Dairy Farm,
100 acres, all open &
tillable. \$95,000
Cattle, Equip & Real
Estate. \$150,000
315-328-4646

Repossessed homes from
Gov't from \$100 plus
repairs/taxes Throughout
PA/Nationwide! Also tax
properties.
216 453 3000, Ext
H4827

THREE ACRE
FARMETTE Large frame
house, exterior excellent
condition, hot water heat,
wood & oil, 1 1/2 baths, 5
bedrooms, needs some
interior decorating Stone
bank barn Ideal horse
farm Access to many
riding trails Berks Co
Near Lebanon Lancaster
line 5 minutes from
Robesonia \$89,900
Beautiful mountain
setting All Star Realty,
215-378-5300

Two story log house built
approx 125 years Junia-
ta Co 717 527-4930
evenings

YORK COUNTY 100±
acres, house, barn, apple
storage building, small
stream, road frontage,
subdivision possibilities,
\$195,000. Anchor Realty,
717-225-3643

FARMERSVILLE EQUIPMENT

your Authorized



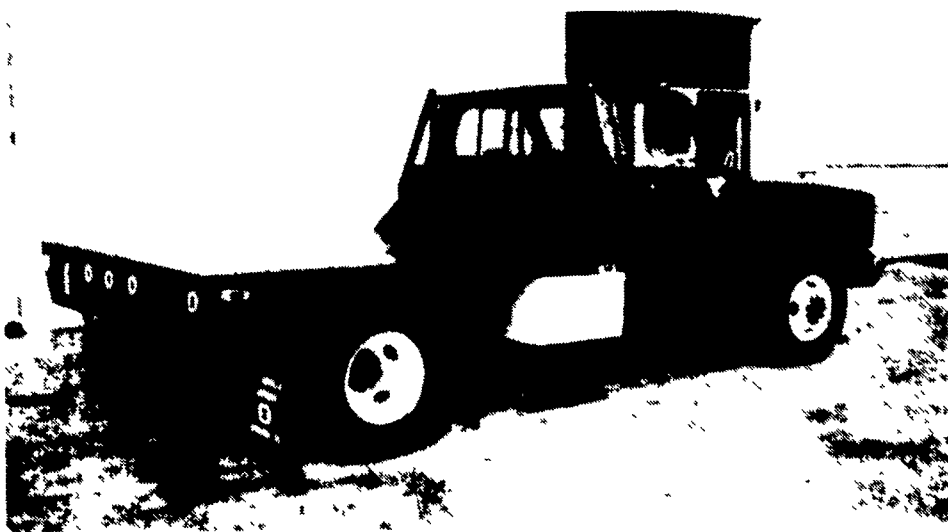
Distributor For The All New



Truck Body

Wishes to Congratulate Will Beinhower Construction of Lancaster Pa. On the Purchase of an Eight Foot x Ninety-One Inch Badger Body, Two Model # 525 Weatherguard Undermount Tool Boxes, Heavy Duty Rear Hitch Assembly Including An Electric Brake Control and 8,000 Lbs. Ramsey Winch Installed on Their New 1986 C30 Series Chevy Chassis.

Pictured Below

**BADGER BODY FEATURES:**

- * Rugged All Steel Construction
- * Heavy Duty Square Tube Contoured Bulkhead
- * Reinforced Rear Apron With Three Light Cluster
- * Five Models To Fit 1/2, 3/4 & 1 Ton Chassis
- * Optional Hinged Access Door For Gooseneck Hitch

For Further Information or Pricing Contact John Fry or Tom Buch

FARMERSVILLE EQUIPMENT, INC. R.D. # 4, EPHRATA, PENNA. 17522

(717) 354-2150