

School PTA Sells Local Farm Products

HARRISBURG — Promote local farm products and still make a buck?

Why not, the Keystone Elementary School PTA decided this fall at Knox, Clarion county. And PTA members made it happen with almost \$12,000 in sales and a fat \$4,000 in profits for school activities.

Sales by 410 Keystone elementary students would have done a supermarket proud. During the two week effort, they sold 1,500 pounds of cheese and butter, 5.5 tons of potatoes, 4 tons of apples, 750 mini hams, 600 pounds of hamburger and 210 pounds of honey.

"It sure beats selling candy from Texas," says Donna Kline, chairman of the Clarion County Dairy Promotion Committee that co-sponsored the fund raiser with the Clarion County Farmers' Association.

Some 2,010 local residents agreed by buying the home-grown products.

County Agent Dave Fowler, a Keystone PTA member, came up with the "shop locally" idea and

provided a computer to keep up with the flow of orders.

"Response was tremendous from producers and buyers alike," reported Betsy Fowler and Beverly Engle, co-chairmen of the PTA fund raiser.

Top salesman was Chad Smith, a first grade student at Keystone Elementary. Dave Fowler's daughter, Bethany, was high salesmen for dairy products. She's in the third grade.

Actually, no cheese or butter is made in Clarion county.

"That's right," Donna Kline explains, "but 125 Clarion county dairy farms ship milk across the county line to the MMI plant at New Wilmington that does."

Mozzarella and Provolone cheese from the plant was bought in bulk and cut and wrapped in three pound packages by members of the county dairy promotion committee.

Cooperating producers besides MMI Farmers Cheese were: Clarion County Beekeepers, Hirsch's Meats, Long Acres Potato Farms, Musser Fruit Farm and Zacherl Farms.

Is the fund raising idea catching on?

"Other area schools are excited about it," Donna reports. "Our committee expects to be really busy next year."

Nature Classes

LANCASTER — The Lancaster County Parks and Recreation Department will offer two guided nature walks in December and January. The first hike will take place at Octoraro Lake in southern Lancaster County on Sunday, Dec. 14. The hike will include waterfowl identification and a side trip to adjacent woodlands to view other species. Those interested should meet at the Central Park office at 1 p.m., or at the Chester Water Authority Boat Launch on Spruce Grove Road at 1:45 p.m. Registration is required. Call 299-8215.

A Winter Tree Identification class will be held on Saturday, Jan. 10. The program includes indoor instruction followed by outdoor field work. Those interested should meet at Shuts Environmental Center on Eshleman Mill Road at 1 p.m. Register by calling 299-8215.

State 4-H Award Winners

(Continued from Page B21)

Matthew Will

Matthew Will, R1 Berlin, has been named the state petroleum power award winner.

The son of James K. and Mary R. Will, he is a junior at Freedom Christian School. A 4-H member for nine years, he served his local club as treasurer, news reporter/photographer and junior leader, and was also a member of county council.

Will participated in State Leadership Congress, placed second in the National 4-H Calendar Contest and participated in the National 4-H Photo Contest. He completed projects in dairy, snowmobile safety, rocketry, photography, beef, riflery, aviation, leadership, forestry, wildlife, swine, small engines, lawn and garden equipment, tractor maintenance and weather.

Kristen Youngman

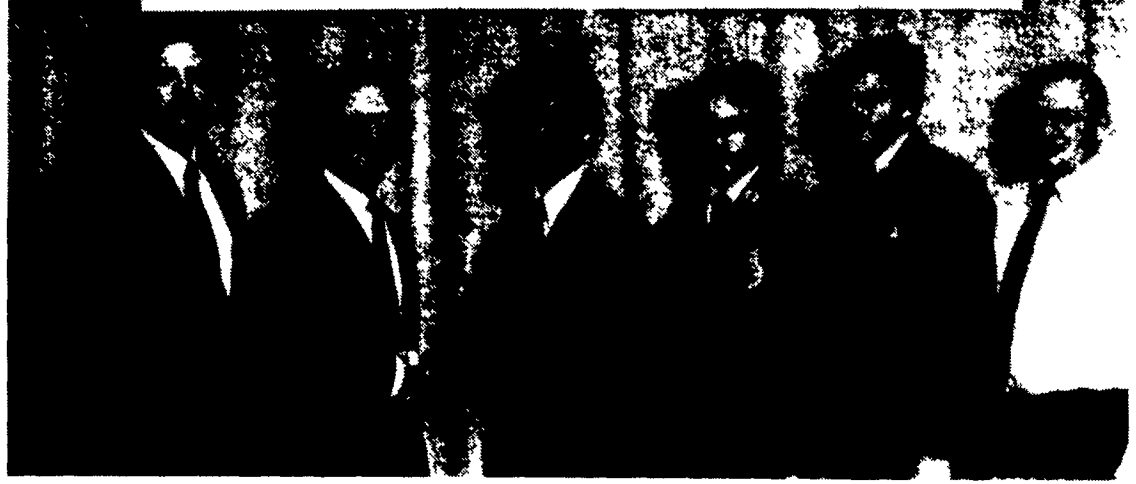
Kristen Youngman, R1 Sugarloaf, has been named the state foods and nutrition winner.

The daughter of Scott and Jeanette Youngman, she is a sophomore at West Hazelton Junior/Senior High School. A 4-H member for six years, she has served her local club as president, vice president, secretary/treasurer and news reporter.

Youngman completed projects in foods and nutrition, clothing and textiles, working with wool, pet care, entomology, clowning, vegetables, plant services, roller skating, computers, cross country skiing, sheep, photography, Wildlife through the Seasons, snowmobiling, cultural arts, health and fitness, child care and family relations and energy conservation.



NATIONAL FFA CONVENTION Kansas City, Missouri



Pa. Ag Mechanics Team Places Ninth In National Competition

The Pennsylvania FFA Ag Mechanics team placed ninth in national competition at the National FFA Convention. Here, members of the gold-medal winning team met with special project sponsor of the contest, Terry J. Renninger, vice president; and Larry A. Jensen, manager, Farm Tire Marketing, Firestone Tire and Rubber Company, Akron, Ohio.

Team members are, from left, Darryl Weaver, Grassland FFA, New Holland; Roy Aument, Solanco, FFA, Quarryville; and John Brofee, Greenwood Chapter, Millerstown. They were accompanied by coach Richard Hackenberger, Mifflintown.

In individual competition, team members Darryl Weaver and Roy Aument received gold medals and John Brofee received a bronze.



bobcat

NOW AVAILABLE The New 642B 32 H.P., 1000 Lb. Capacity Skid Loader

ONLY
\$11,500*



Pictures of Bobcat Loaders may show other than standard equipment

Operate with low cost efficiency all around the farm, or on the construction site with the new 642B Bobcat front end loader. Work close-up against walls, corners and fences.

Move quickly in and around small openings and areas the bigger machines can't maneuver. Eliminate costly, time-consuming hand labor.

With the 642B Bobcat, do a variety of jobs, with the "easy-on easy-off" attachments available with the 642B Bob-Tach "bolt-on" attachment system.

HEIGHT	WIDTH (LESS BUCKET)	RATED OPERATING CAPACITY
76.0" (1930 MM)	54.0" (1372 MM)	1000 LBS. (454 KG)

- Low cost efficiency on the farm or construction site.
- Mitsubishi, four cylinder liquid-cooled gasoline engine.
- Hydrostatic drive.
- Seat bar for additional operator safety, convenience and comfort.
- Bob-Tach "bolt-on" system and variety of optional attachments for multiple job versatility.
- Tip-up ROPS for easy maintenance.

* Manufacturer's suggested list price excluding freight and attachments.



bobcat DEALERS

Carlisle, PA
**PETERMAN
FARM EQUIPMENT**
717-249-5338

Chambersburg, PA
**CLUGSTON
IMPLEMENT INC.**
717-263-4103

Honey Grove, PA
**NORMAN D. CLARK
& SON INC.**
717-734-3682

Mill Hall, PA
DUNKLE & GRIEB
717-726-3115

Palm, PA
**WENTZ
FARM SUPPLIES INC.**
215-679-7164

Slatersville, PA
SCAT ENTERPRISES INC.
215-767-1711

Hatfield, PA
**LCL CONSTRUCTION EQUIP.
SALE CO.**
215-362-2510
Wilmington, DE
302-998-0128

Honesdale, PA
CHARLES H. SHEPHERD, INC.
717-253-3334

Martinsburg, PA
BURCHFIELD'S INC.
814-793-2194

Needmore, PA
**CLUGSTON
FARM EQUIPMENT**
717-573-2250

Quarryville, PA
**GRUMELLI'S
FARM SERV.**
717-786-7318

Towanda, PA
S.P.E. INC.
717-265-4440

Tunkhannock, PA
BARTRON FARM SUPPLY
717-836-3740

