

Lebanon Co. DHIA

(Continued from Page D17)

Ernest Wagner	3	5-9	305	21,370	3 7	801
280						
Dale Hostetter & Sons	3	6-2	305	21,222	4 2	896
59						
122	3	6-0	305	23,928	3 8	913
M Luther Bennetch						
Brenda	3	7-5	282	22,191	4 2	941
Kassy	3	7-4	305	23,618	4 3	1004
Trudy	3	4-3	305	23,747	3 6	855
Richard & Ronald Shirk						
Donna	3	7-9	305	22,565	3 6	815
May	3	4-9	305	21,437	3 8	815
Mindy	3	4-5	305	23,549	3 5	829
Robin	3	4-3	305	23,927	3 4	808
Jesse L Weaver						
22	3	4-11	305	24,547	3 4	836
Mark Copenhaver						
113	3	6-3	305	25,786	3 1	800
160	3	4-9	305	23,445	3 6	851
Kirby L Horst						
Annie	3	5-2	303	20,982	4 1	859
Twin	3	4-10	305	22,122	4 5	1003
Clyde E Deck						
33	3	9-7	305	23,149	3 6	844
78	3	0-0	303	16,977	4 9	840
Arthur R Krall & Sons						
Angel	3	7-2	305	26,296	3 4	905
Hershey Bare						
86	3	4-0	305	18,221	4 7	850
26	3	3-4	305	20,893	4 1	855
Reuben O Martin						
Silver	3	3-1	305	22,031	3 6	800
R&E Farms						
7	3	7-2	305	24,077	3 7	901
206	3	6-4	305	25,246	3 4	861
Walter K Heisey						
56	3	5-7	305	23,727	3 5	840
85	3	4-4	305	20,856	3 9	806
Robert B Bollinger						
65	3	6-4	300	22,769	3 5	800
Mervin W Horst						
Cathrin	3	3-8	305	21,708	3 9	856
Walter M Martin						
23	3	9-5	305	26,540	3 5	929
Leon H Kline						
Iva	3	5-11	305	23,619	3 7	884

Bucher Brothers						
Ellie	3	7 3	305	27,026	3 4	927
Meadow-Wood Farm						
188	3	5 5	305	27,834	3 1	865
Richard Batz						
Misty	3	4-9	305	22,912	3 5	800
Becky	3	3-11	305	22,646	3 8	855
George Ungemach						
Y 19	3	7-8	305	21,520	3 9	844
Gary Lentz						
Virgo	3	8-3	305	26,799	3 4	901
Willis Good						
17	3	7-4	305	26,140	3 8	981
David Weaver						
Blackie	3	4 3	288	21,467	4 1	882
Earl & Marilyn Smith						
Jennie	3	4 9	291	23,373	3 9	915
Aaron Weaver						
69	3	6-1	305	20,367	4 0	817
17	3	3-2	305	19,115	4 4	837
Sonnen Acres						
Saga	3	6-3	305	26,126	3 1	816
Louis E Martin						
35	3	0-0	297	23,386	3 5	820
Jay & Carol Hershey						
Vera	3	6 0	295	22,474	4 1	926
Hoover Farms						
35	3	7-1	305	21,744	4 0	873
Hyat	3	4-1	305	25,184	3 9	989
Megan	3	3-5	305	25,926	3 5	899
DGK-Holsteins						
Jet	3	6-10	305	25,127	3 8	956
Kenneth Mase						
Tracey	3	6-1	305	20,414	4 0	814
Eugene Martin						
Sherry	3	0-0	305	23,272	3 5	808
Phares Z Musser						
55	3	6-2	305	20,713	4 6	957

Harvey E Bomgardner						
Sally	3	5-7	305	21,573	3 8	811
Suzannah	3	4-10	305	24,570	4 0	995
Juliet	3	3-5	305	20,897	4 1	863
Wernerway Farms						
85	3	9-3	305	23,133	3 9	911
78W	3	5-1	305	34,135	2 6	882
72W	3	4-4	305	28,465	3 0	842
79W	3	2-1	305	19,803	4 0	800
71W	3	2-1	305	22,486	3 6	805
Raymond & Marlin Getz						
Nola	3	5-4	305	24,170	4 6	1103
Gertie	3	5-2	305	24,086	3 9	928

Bucks Co. DHIA

October, 1986

Name	Brd.	No. Cows	% Days In Milk	Milk Lbs.	3 Fat X Lbs
Theodore S Wilson	B3	47 0	86 4	21,220	755
Willow Ridge Farm	3	48 0	87 8	19,290	744
Delaware Val College	3	38 9	85 6	21,141	730
Bishcroft Farm	3	121 2	90 2	19,658	723
Raymond Gross	3	46 4	86 9	20,187	723
Richard O Smith	2	60 8	88 1	15,566	709
David R Wolfinger	3	41 2	86 8	19,991	707
Harry E Thompson	3	44 3	85 9	19,603	706
Moyers Village Farm	B3	86 2	86 6	19,423	704
George & David Bishop	3	104 4	86 5	20,523	703
Paul L-Kevin Bishop	B3	67 6	88 1	20,777	691
Walter & David Wurster	3	60 6	89 1	19,870	687
Rushlyn Farm	3	39 2	90 1	18,007	685
Earl H Ben E Landis	B3	32 0	89 1	17,654	684
Ken & Virginia Hager	B3	46 4	88 7	18,967	678
Crooked Acres Dairy	3	58 4	87 5	19,413	673
Robert-Donald Crouse	B3	67 0	87 2	18,940	670

(Turn to Page D19)

TRUCKLOAD SALE

FLEX BOOT

LADDERS

AGITATORS

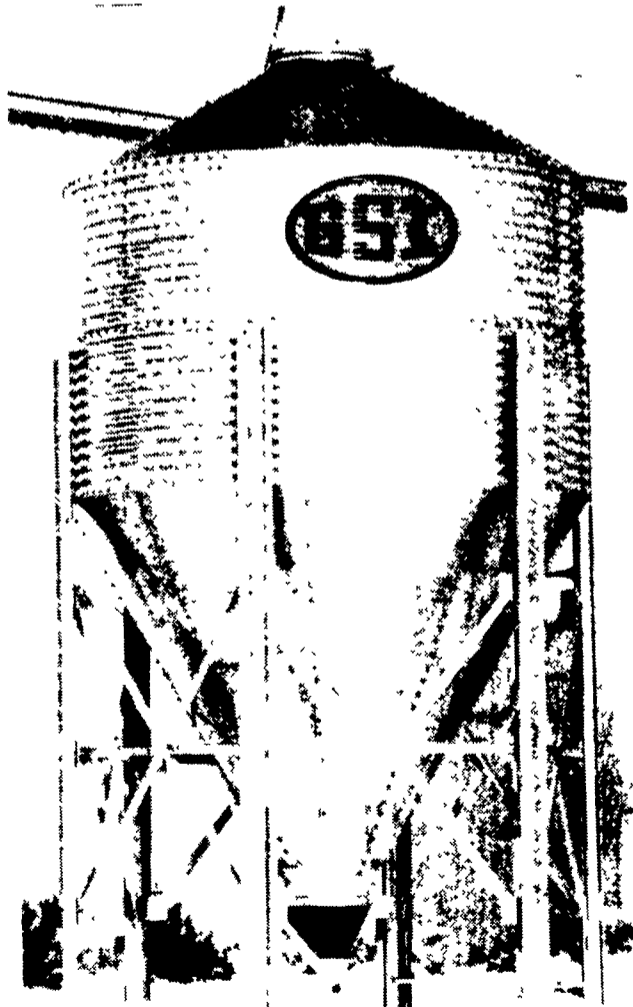


AUGERS

PNEUMATIC FILL KITS

SLIDE VALVES

FEED BINS



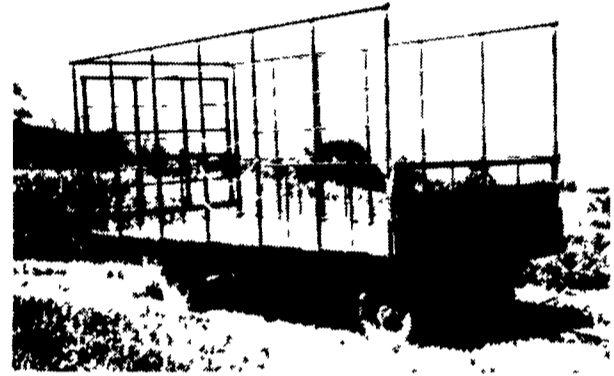
automatic farm systems

608 Evergreen Rd., Lebanon, PA 17042

(717) 274-5333

Check Our Low Prices Before You Buy

BEST BUY of the YEAR



- 6" Steel Main Beam
- 2" Vertical Tubing Drilled so that the 1" Horizontal tubing extends Full Length of Wagon
- Front-Side and Rear Loading and Unloading
- 2x8 Pressure Treated Lumber Floor
- 2x6 Oak Cross Beams
- Beds are 8' wide, available in 16, 18 or 21' lengths. Racks are 90" high.
- NEW FEATURE: 6" Channel across back for pushing wagon without damaging bed.

FOR FURTHER INFORMATION, CALL YOUR LOCAL DEALER:

LOST CREEK IMPLEMENT
Oakland Mill, PA
717-463-2161

MELROSE FARM SERVICE
Greencastle, PA
717-597-3138

KELLER BROS.
Lebanon, PA
717-949-6501

DUNKLE & GREIB
Mill Hall, PA
717-726-3115

WALTER G. COALE, INC.
Churchville, MD
301-734-7722

TOBIAS EQUIPMENT CO., INC.
Halifax, PA
717-362-3132

NORTHEAST DISTRIBUTING
West Clifford, Pa.
717-222-9020

VALLEY IMPLEMENT SALES
Harrisonburg, VA
703-434-9961

CHAMBERSBURG FARM SUPPLY
Chambersburg, PA
717-264-3533

OXFORD GREENLINE, INC.
Oxford, PA
215-932-2753

PAUL SHOVER'S, INC.
Loysville, PA
717-789-3117

A.B.C. GROFF
New Holland, PA
717-354-4731

CARLISLE FARM SERVICE
Carlisle, PA
77-243-4419

CLARK'S FARM SUPPLY
Williamsport, PA
717-494-0060

Manufactured By

CLW MANUFACTURING, INC.

R.D. #2, Box 8

Newburg, Pa. 17240

717-423-6794