

York Co. DHIA

(Continued from Page D11)

Name	Brd.	Cows	No. In Milk	Milk Lbs.	Fat Lbs.	Bright Meadows	B3	70.6	80.6	18,772	679
Shelbud Holsters	3	4-3	305	23,579	3.5	814					
Jeanine Galen Hess	3	4-11	305	18,347	3.7	677					
Bradley Emig	4	6-1	305	12,858	5.3	677					
Cristy	3	11-9	305	16,804	4.1	694					
Four-Co Farm	3	4-8	305	20,062	3.6	727					
Apple26	3	4-8	301	22,347	3.3	739					
Mercedes	3	2-7	305	18,888	3.6	675					
Andarea	3	3-11	305	20,174	3.5	709					
Bell	3	6-3	305	17,244	4.1	704					
Bald Eagle Farm	3	7-11	305	19,410	3.8	733					
22	3	10-11	305	20,943	3.2	660					
Ivy	3	4-4	305	23,935	3.4	818					
David M Emig	3	4-9	305	20,132	3.8	760					
48	3	4-2	305	19,567	3.4	657					
McRai Dairy Farm	3	3-2	305	23,125	3.3	771					
395	3	3-3	305	22,220	3.8	836					
368	3	2-1	305	22,511	3.2	724					
383	3	7-3	305	19,924	3.4	674					
404	3	6-2	305	19,286	3.7	722					
462	3	6-1	305	24,293	3.2	771					
454	3	11-5	305	23,099	3.0	702					
537	3	0-4	305	19,866	3.6	722					
William Ruppert	3	6-0	305	23,184	3.1	727					
Cindy	3	10-8	305	17,252	4.1	714					
Candy	3	6-8	301	17,285	4.7	810					
Rocky	3	5-11	305	20,352	3.5	713					
Jack											
Nick											
Diamond											
Wayne E Myers											
Julie											
Marvel											
Ginny											

Name	Brd.	Cows	No. In Milk	Milk Lbs.	Fat Lbs.	Bright Meadows	B3	70.6	80.6	18,772	679	
Melwood Farm	3	35.6	90.6	24,866	978	Mast Stoltzfus	B3	46.5	87.6	18,641	677	
Ardrossan Farms	1	121.1	88.8	20,590	853	Herman Stoltzfus	3	54.9	86.6	18,788	677	
Dunwood Farm	3	57.0	89.7	22,192	840	Walmoore 1	3	132.7	87.6	18,644	675	
H&R Mason	3	134.5	89.6	20,825	796	Maplesway Farm	3	72.3	90.0	18,452	675	
Jonas B Stoltzfus	3	46.1	86.4	20,622	796	Dale Hostetter	3	50.1	85.9	18,725	675	
Ken Marilyn Umble	3	58.7	89.5	21,164	785	Kevin Stahlnecker	B8	50.7	83.7	18,404	674	
Breck-A-De Farm	3	79.0	86.2	20,549	761	Calvin + Tim Kurtz	B3	83.0	85.7	18,527	673	
Thomas C Kearns	B3	42.3	85.2	19,945	753	Floyd Miller & Sons	B3	71.0	86.5	18,440	672	
Ben Beiler & T Barlow	3	100.7	85.5	19,838	747	Lester Eby	3	66.3	85.0	18,570	670	
John S Stoltzfus	3	69.9	89.2	19,440	744	Round Top Farm	B3	84.7	82.2	19,301	670	
Arthur D Hershey	3	53.3	85.0	20,869	744	Merle J King	B3	93.0	84.9	18,011	667	
Joseph Lusby	B3	55.9	88.2	19,737	743	George Strutynski	B3	84.7	86.9	17,467	667	
Robert E Pepple	3	65.0	85.9	19,906	741	David & Dawn Windle	3	56.0	82.7	18,191	661	
Landis S Reid	B3	63.6	89.6	20,903	741	Kaolin Farms Reg Hol	3	35.6	85.0	19,851	660	
Harold J Ranck	3	56.0	89.3	19,343	738	James V Yale	B3	70.6	89.7	16,834	660	
George P Lamborn	3	35.4	87.3	20,093	736	Walmoore #3	B3	140.6	87.4	17,489	660	
Vernon Guest & Son	B3	96.4	88.9	19,001	733	Paul Martin	B3	64.8	84.0	19,965	660	
Paul King	3	67.7	94.6	19,362	732	Harold R Kulp	B3	82.9	87.1	17,784	658	
Glen H Freese	3	72.7	86.2	20,864	726	Charles H Gable	1	69.5	84.6	15,085	655	
Mrs John B Hannum 3D	B3	96.3	86.6	21,077	725	David F King	B3	30.7	91.9	19,301	655	
Chris & Ches Stoltzfus	3	55.7	86.2	18,702	723	Chester Hills Farm	G3	120.2	88.6	17,984	653	
Donald Hostetter Jr	3	87.7	87.8	19,553	720	J Elvin Ranck	B3	32.1	87.7	18,386	652	
Mark & Melody Stoltzfs	B3	55.3	85.5	18,942	719	Paul M Snader	B3	27.8	87.5	18,143	651	
Wilmer L Hostetter	3	50.3	86.5	19,467	719	Amos K Kauffman	3	40.9	86.8	18,273	651	
Swan View	3	63.2	86.1	19,507	712	David Walton	3	52.8	86.9	18,217	650	
J Harold Bare	3	66.4	86.8	19,016	707	Ardrossan Farms						
Jefferson D Yoder	3	68.5	87.9	18,461	706	Snoquen	1	7.3	305	30,492	4.0	1219
Kulp Bros	B3	89.7	90.0	20,215	706	H-K-Eva	1	7.5	305	26,832	3.9	1042
Leon D Kurtz	3	43.0	87.3	20,451	706	Gsinger	1	4.10	305	24,103	4.2	1019
William L Stoltzfus	3	49.9	88.0	18,788	706	Pvfors	1	8.2	305	23,922	4.1	988
Donald M Horning	B3	49.4	86.4	18,751	702	OM-Mint	1	3-10	305	23,607	4.0	956
David E Weaver	3	105.7	86.8	18,161	700	Snochid	1	5-11	304	21,150	4.4	934
Timberview Farm	3	57.5	86.6	17,460	698	Cvision	1	5.0	305	21,789	4.1	894
A Dudley & Son	3	55.3	83.9	18,144	698	Sb-Time	1	9.7	305	22,069	3.8	844
Richard Hostetter	B3	48.6	84.2	19,426	698	Hsnogrl	1	6-3	305	21,457	3.9	833
Benjamin K Kauffman	B3	41.9	88.8	19,258	696	Wizzing	1	2-3	305	18,742	4.4	818
Dvid K Stoltzfus	B3	47.4	85.2	18,604	695	George P Lamborn						
Daniel R Stoltzfus	B3	38.4	85.3	19,253	694	Aster	3	7-11	305	27,772	4.0	1113
Jesse E Lair	B3	87.9	86.5	20,046	693	Lotty	3	4-4	305	32,126	2.9	935
J Elmer Lapp	3	40.3	87.2	19,070	692	Melwood Farm						
Caroline & Carolyn Eberly	B3	36.4	90.4	20,228	687	Lucy	3	3-0	305	27,423	4.0	1094
Elmer A Mast	B3	82.2	87.7	17,566	685	Leana	3	3-1	305	24,847	4.1	1030
Samuel K Stoltzfus	3	43.0	86.6	18,801	681	Nan	3	1-11	305	24,152	3.8	907
Daniel M Stoltzfus	B3	50.8	84.1	18,149	681	Lisa	3	3-0	280	19,605	4.2	827
Spring Aqua Farm	3	86.7	90.3	19,387	680	Dunwood Farm						
Donald L Kauffman	B3	70.7	85.7	18,534	680	Sunbeam	3	4-8	305	29,901	3.6	1083
Pei-Valley Farm	B3	75.1	86.7	17,953	679	Lucinda	3	4-7	305	27,786	3.7	1021

(Turn to Page D13)



Chester County DHIA Monthly Report

October, 1986

The high fat cow was owned by Ardrossan Farms, a 7-year-old Ayrshire, producing 1,219 pounds of fat. The high milk cow was owned by George P Lamborn, a 7-year-old Holstein producing 27,772 pounds of milk.

THINKING OF BUILDING?

READ LANCASTER FARMING'S ADVERTISING TO FIND ALL YOUR NEEDS!

SCHLESSMAN'S HYBRID CORN

PEMIUM SINGLE CROSSES

- SX-405A ■ SX-711 (New) ■ SX-805 (New)
- SX-642 (New) ■ SX-725 ■ SX-810

PENN STATE TRIALS, ZONE 2

- SX-625 - Highest grain yield and 2nd highest tonnage or best TDN value/acre.

BALERTWINE
For The Best Fall
Prices Call Now...
New Prices In For '87

ALFALFA Boyds 84 VWAP Brand
Saranac AR Boyds 78AT Brand
and others Boyds Wet Foot Brand

WHOLESALE & RETAIL

BOYDELL FARMS

302 Iona Rd., Lebanon, PA 17042
Phone: 717-272-8943

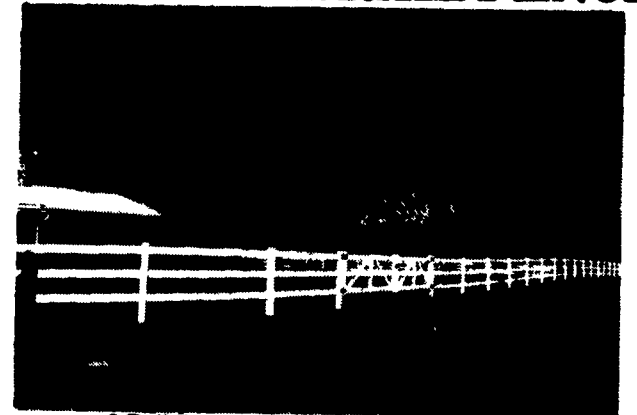
POLYVINYL P.V.C. PRODUCTS

100's Of Uses

P.V.C. RAW MATERIAL

- 2x4 • 2x6 • 2x8 T&G • 4x4
- 5x5 • 7/8"x1 1/2" • 7/8"x3" • U-Channel
- Pipe • Accessories, Etc.

P.V.C. WHITE RAIL FENCE



3-Rail Fence w/Gates "Never Need Paint"
P.S. Polyvinyl will not rot, splinter, chip, etc

Write To

QUALITY FENCING & SUPPLY

WHOLESALE AND RETAIL

R.D. 1, Box 428

New Holland, PA 17557

STORAGE TRAILER SALES & RENTALS

Up To 45 Feet Long
When & Where You Want It

Farmers • Retail Stores
Construction • Industry
— 1000 uses —

\$90.00
per month/rental
We can deliver



CALL MON-FRI: 8 AM-4 PM

717-786-2166

Howard E. Groff Co.

111 E. State St., Quarryville, PA 17566