

# Livestock market and auction news

## St. Louis Cattle

Wednesday, Dec. 4

Report supplied by USDA

Receipts This Week 4,500  
Week Ago 1,900  
Year Ago 4,700

Compared to last week's close, slaughter steers firm to .50 higher. Slaughter heifers fully steady. Cows fully 2.00 higher. Bulls steady. Slaughter supply mainly choice steers and heifers, around 5% cows.

**SLAUGHTER STEERS:** Mixed choice and prime 2-4, mostly 2-3 1100-1350 lbs. 62.00-63.00, mostly 62.50-63.00. Part load 2-3 1250 lbs. 63.50, choice 2-4 975-1350 lbs. 61.00-62.50. Mixed good and choice 2-3 900-1275 lbs. 59.50-61.50. Good 2-3 900-1250 lbs. 57.50-59.50. Standard to Good 2-3 1050-1500 lb. holsteins 49.00-53.75.

**SLAUGHTER HEIFERS:** Mixed choice and prime 2-4, mostly 2-3, 900-1150 lbs. 60.50-61.00, part load 1.50. Part load and package 2-3 950-1050 lbs. 62.00. Choice 2-4, 900-1150 lbs. 59.50-60.50. Mixed good and choice 2-3 900-1075 lbs. 57.50-59.50. Good 2-3 900-1050 lbs. 55.50-57.50; 750-900 lbs. 52.50-55.50.

**COWS:** Breaking utility and

commercial 2-4, 34.00-36.00. Cutter and boning utility 1-2 36.00-37.00. High-yielding cutter and boning utility 1-2 37.00, few up to 38.00. Canner and low cutter 1-2 33.00-35.00. Shelly canner 1-2 29.00-33.00 (Closing Week Sales).

**BULLS:** YG 1-2 1075-2000 lbs. 40.00-43.00. Individual YG 1 45.00.

Wednesday's Weekly Sheep Auction. Receipts around 350 head. Slaughter lambs 3.00-4.00 higher. Slaughter ewes steady. Feeder lambs steady compared with last week.

**SLAUGHTER LAMBS:** Choice and prime woolled 95-120 lbs. 71.00-74.00 mostly choice 90-110 lbs. 68.50-72.00. Choice and prime 125-140 lbs. 60.00-66.00.

**SLAUGHTER EWES:** Few cull to low utility 16.00-23.00.

**FEEDER LAMBS:** Choice and fancy 70-95 lbs. 65.00-71.50, mostly 65.00-66.00.

## Farmers Livestock Auction

Duncansville, Pa.

Dec. 1, 1986

Report supplied by auction

**CATTLE** 226. **STEERS:** H. Choice & Prime 60.50-62.75; Choice 59.00-60.25; Good 53.00-57.50;

Standard 39.75-44.75.

**HEIFERS:** Choice None; Good 45.00-52.50.

**COWS:** Utility & Commercial 39.00-41.75; Cutters 36.00-39.00; Canner & Low Cutter 28.50-35.75.

**BULLOCKS:** Good & Choice 44.50-50.25.

**BULLS:** Yield Grade No. 1 41.00-45.75.

**FEEDER CATTLE:** Steers Good 54.00-61.00; Standard 37.00-48.50; Bulls Good 50.00-56.00; Standard 35.00-46.00; Heifers Good 45.00-52.00; Standard 32.00-44.00.

**CALVES** 330. Prime None; Choice 72.50-79.00; Good 60.00-68.50; Standard & Good 52.00-57.50; 90-110 lbs. 50.00-58.50; 65-90 lbs. 38.00-52.50; Holstein Bulls 90-130 lbs. 72.50-112.00; Holstein Heifers 90-130 lbs. 55.00-67.00.

**HOGS** 92. US No. 1-2 210-255 lbs. 54.00-55.25; US No. 1-3 210-265 lbs. 51.00-53.75.

**SOWS:** US No. 1-3 44.50-47.50; Boars 40.00-42.50.

**FEEDER PIGS** 19. US No. 1-3 20-35 lbs. 28.50-35.50 per head; No. 1-3 35-50 lbs. 36.00-40.00.

**SHEEP** 3. Slaughter lambs Choice None; Good 100-130 lbs. 58.00-61.50; Sl. Ewes None.

**GOATS** 1. 25.00.

3 Loads of Hay 100.00-117.00 per ton.

## Peoria Cattle

Thursday, Dec. 4, 1986

Report Supplied by USDA

Compared with last weeks close slaughter steers and heifers opened steady, but closed mostly 1.00 to 2.00 lower as live prices followed the midweek decline in carcass prices. Slaughter cows closed generally steady to firm. Bulls 1.00 to 2.00 lower. Supply mainly good to average choice slaughter steers and heifers with 16% cows. Receipts this week about 2100 as compared with actual receipts of 1816 a week ago and 1936 a year ago.

**SLAUGHTER STEERS:** Choice 2-4, mostly 3 1050-1250 lbs. 61.00-63.00, couple part loads Monday 63.50-64.00; 975-1050 lbs. 59.00-62.50. Mixed good and choice 2-3 1000-1200 lbs. 57.00-61.50. Good 2-3 900-1100 lbs. 57.00-59.50. Load and package good and choice 2-3 holsteins 1170-1200 lbs. 53.00-53.50.

**SLAUGHTER HEIFERS:** Choice 2-4, mostly 3 950-1150 lbs. 59.00-62.00, part load and package Monday 1125-1275 lbs. 62.50-63.00; 875-950 lbs. 57.50-61.50. Mixed good and choice 2-3 900-1100 lbs. 58.50-60.00. Good 2-3 800-1000 lbs. 56.00-

59.00.

**COWS:** Breaking utility and commercial 2-3 32.00-36.00. Cutter and boning utility 1-2 30.00-35.00. Canner and low cutter 28.00-32.00, thin cows 26.00-28.00.

**BULLS:** YG 1 1150-2430 lbs. 40.00-44.00; YG 2 38.00-42.00.

## New Holland Sales Stables

New Holland Dairy

Wednesday, Dec. 3, 1986

Report supplied by auction

Reported receipts of 84 cows, 118 heifers and 6 bulls. Market stronger.

Load of Canada fresh cows, 870.00-1085.00, springers 875.00-1000.00.

Load of Perry Co. fresh cows, 660.00-1135.00.

Load of PA fresh cows, 1100.00-1110.00.

Load of PA springers, 950.00-1050.00.

2 Loads of PA fresh cows, 730-1200.

Load of PA fresh cows, 700-900.

Load of PA fresh cows, 725-900.

Locally consigned cows 410.00-830.00.

Local Springing heifers 550.00-860.00, purebreds 750-1000.

Open heifers 275.00-470.00. Bulls 410.00-780.00.

## BUYING SOYBEANS EAR & SHELLLED CORN

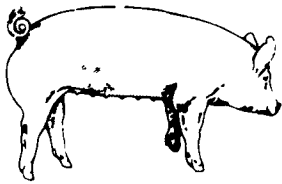
Contract or Spot Purchase  
Futures and Options Trading Services Available

### MARTIN GRAIN

Business 717-653-1085

Residence 717-653-5935

84 E. Main St.  
Mt. Joy, Pa. 17552



**EMERY'S BUYING STATION**

**OPEN TO RECEIVE YOUR MARKET HOGS**

**AT THE GREEN DRAGON MARKET  
RD 4, EPHRATA, PA 17522  
1 MILE NORTH OF EPHRATA  
ON NORTH STATE STREET.**

**HOURS: MONDAY, TUESDAY, and  
WEDNESDAY 6:00 A.M. to 11:30 A.M.  
215-458-5677 Residence  
717-733-9648 Office**

**YOU ARE PAID FOR YOUR HOGS IMMEDIATELY**

Ken & Lois Emery, Proprietors

## CRIPPLED AND DISABLED

**Cows, Steers & Bulls  
For Slaughter Under  
USDA Inspection**

**Call Wayne Taylor  
717-866-6289  
215-286-9400  
Lebanon, Berks,  
Lancaster & Chester  
Counties**



**STRIKE IT RICH!**

**SELL IT WITH A**

**LANCASTER FARMING CLASSIFIED**



**KING'S AUCTION  
KIRKWOOD  
Hay, Straw and  
Grain Auction  
EVERY TUESDAY  
12:00**

Located Rt. 472 5 miles south of Quarryville or 6 miles north of Oxford at Shaub's Auction House

Lloyd H. Kreider  
Auctioneer  
AU-000513L

No out of state checks  
**ALL TRUCKERS AND FARMERS WELCOME**

**WAKE UP YOUR DAIRY HERD!**



## Maxi-Cow Complete Dairy Feed

Keystone Maxi-Cow Completes are made with the highest energy concentrates available on the market today. These completes can be used in your high producing herd or as a top-dress for your finest cows.

**Quality Products,  
Quality People!**



**KEYSTONE MILLS**

—Serving Agriculture—Since 1894—

R.D. 3  
Ephrata, PA 17522  
(717) 354-4616

1975 Route 336  
Romulus, NY 14541  
(315) 549-2578

\* Trademark Ralston Purina Company