

FEBRUARY

FRI FEB. 6 - 10AM Horse Sale New Holland Sales Stables, Inc., New Holland, PA Abe Diefenbach, Manager

SAT. FEB. 7 - 10AM 7 acre Farmette & Personal Property. Located Salisbury Township, 1/2 mile North of White Horse, turn off of Rt. 340 on Cambridge Rd. to the corner of Seldomridge Rd. & Kauffroth Rd., Lanc. Co., Pa. Terms By: Mary A. Miller. Aucts: Robert E. & Jeffrey R. Martin & Frank L. Steller.

FRI FEB. 13 - 9AM Farm Eq. New Holland Sales Stables, Inc., New Holland, PA. Abe Diefenbach, Manager.

THURS. FEB. 19 - 9AM Farm Equip. Located between Soudersburg & Paradise at 2969 Lincoln Hwy., Rt. 30, 8 miles East of Lancaster. Terms By: T.J. Wheary & Sons. Aucts: Robert E. & Jeffrey R. Martin & Blaine Rentzel.

THURS. FEB. 19 - Longview Farms (Punk Bros.), Rt. 526, Imlaystown, NJ Farm Mach., used on 1000 acre potatoe & grain farms Sale by: Col. Fred R. Daniel Aucts., Inc

THURS FEB. 19 - Farm Eq & Tools. Allen Hoover, along Rt. 82, approx 5 mis. E. of Honey Brook. Nevin Martin & Lewis Groff, Aucts.

THURS. FEB. 19 - 9AM PA Draft Horse & Mule Association Sale. Pennsylvania State Farm Show Building, Corner of Cameron & McClay Sts., Harrisburg, PA.

FRI. FEB. 20 - 10AM Horse Sale. New Holland Sales Stables, Inc., New Holland, PA. Abe Diefenbach, Manager.

WED. FEB. 25 - 9AM Holstein Herd, Milking Eq., Farm Mach. Aquilla & Anna Mary Stoltzfus. Steve Petersheim & Steve Jr., Aucts.

THURS. FEB. 26 - Farm Eq. Located Cumberland Co., 132 Park Drive, Boiling Springs, PA Ferman Landis, Owner Foreman's Auctioneering

THURS FEB. 26 - Robert England, Gordon Rd., Robbinsville, NJ Big Grain Farm Mach Sale by Col. Fred R. Daniel Aucts., Inc

THURS. & FRI. FEB 26 & 27 - 9AM Ea. Day. Antique Tractors & Engines, Parts, New, Used & Abused Farm Eq. 10 mis E of Lanc., 2 1/2 mis. W. of New Holland, turn off Rt. 23 on S. Groffdale Rd., turn left on Musser School Rd Lanc. Co., PA. Terms: Elias S. Beiler. Aucts: Robert E. Martin & Son, Blaine Rentzel & Ed Goodrich, Jr.

SAT. FEB. 28 - Farm Eq. & HH. Aaron Ebersol, along Churchtown Rd., 1/2 mi. S. of Cambridge. Nevin Martin & Lewis Groff, Aucts.

SAT. FEB. 28 - Fifth Annual Lancaster Farm Toy Auction, Show and Sale at Lancaster Treadway Inn, Route 30 and Oregon Pike (Rt. 272), Lancaster, PA. Show and Sale 9AM to 3PM Auction starts at 5PM. Auctioneer- Wally Hooker.

MARCH

FRI MAR. 6 - 10AM Horse Sale at New Holland Sales Stables, New Holland, PA. Abe Diefenbach, Manager.

SAT MAR. 7 - Farm Eq. & Tools David H. Martin, along New Holland Road, 1 mi S of New Holland. Nevin Martin & Lewis Groff, Aucts.

SAT MAR 7 - Bart Twp Fire Co All Day Sale of Horses & Mules, Farm Eq., Hay & Straw, Building Materials, HH Located Village of Georgetown on Rt. 896 Lanc Co

MON. MAR 9 Consignment Sale Farm Machinery & Related Items Lebanon Fair Grounds. Held by Lebanon Valley Auction Co For information 717-866-2135 or 717-272-4641

TUES MAR 10 - Farm Eq & HH. Martin W Zeiset, along Churchtown Rd., 1 1/2 mi S of Churchtown. Nevin Martin & Lewis Groff, Aucts.

FRI MAR 13 - 9AM Farm Eq. New Holland Sales Stables, Inc., New Holland, PA Abe Diefenbach, Manager

FRI MAR. 20 - 7PM Horse Sale at New Holland Sales Stables, Inc., New Holland, PA Abe Diefenbach, Manager

SAT MAR 21 - 9AM Kempton Community Center, Northern Berks Co 24th Annual Spring Sale 14 Aucts. 215-756-6973, 756-6532

APRIL

FRI APR 3 - 9AM Farm Eq New Holland Sales Stables, Inc., New Holland, PA. Abe Diefenbach, Manager

FRI APR 10 - 7PM Horse Sale New Holland Sales Stables, Inc., New Holland, PA Abe Diefenbach, Manager

TUES APR 21 - 7PM Feeder Pig Show & Sale New Holland Sales Stables, Inc., New Holland, PA Abe Diefenbach, Manager.

FRI APR 24 - 9AM Farm Eq New Holland Sales Stables, Inc., New Holland, PA Abe Diefenbach, Manager

Public Auction Register

Closing Date Monday 5 00 P M of each week's publication

**PUBLIC AUCTION
65 M/L ACRE FARM
FRIDAY, DEC. 19, 1986
11 A.M.**

LOCATED: From Lancaster, Pa. take Rt. 222 South approx. 10 1/2 miles, turn East on White Oak Rd., go 1 1/4 mile, turn left on Stively Rd. to 2nd lane on left.

Property consists of a 2 1/2 story, 7 room frame house with slate roof and storm windows & doors. 3 Bedrooms & bath on the 2nd floor. Living room, dining room, large kitchen & laundry room on the 1st floor. Attic, full basement, hot water heat.

Main barn has collapsed. Tobacco barn measures 30'X55' of frame structure. Pole barn measures 30'X67' includes a lrg. corn crib.

The Farm contains approx. 65 acres. About 52 acres tillable, 6 acres of meadow, 4 acres of woodland, balance occupied by Bldg's. There's a small spring fed stream flowing through the farm. There's approx. 550 ft. of road frontage along Stively Rd. and approx. 1,100 ft. along White Oak Rd.

OPEN HOUSE: Nov. 29 & Dec. 6, from 1 to 4 P.M. TERMS: 10% down, balance upon settlement.

AUCTIONEER'S NOTE: The land is of highly productive soil. The location is Strasburg Twp., Lancaster Co. A very quiet setting with a long gravel lane.

TERMS BY
**WILLIAM E. CRAMER &
BETTY J. CRAMER**

Auctioneers Conducting Sale:
Lloyd Kreider, AU000513L,
Randal Kline, Roy Good 717-786-3394
Atty.: Appel, Yost & Sorrentino



Dairy and Livestock Sales

DEALER IN ALL KINDS OF LIVESTOCK

Also Crippled & Down Cattle

MARLIN S. IRWIN

Quarryville, PA
PH: 717-786-3016

**PUBLIC AUCTION
of
FARM EQUIPMENT- TRUCKS
& IRRIGATION
THURSDAY, DEC. 11, 1986
11 A.M.**

LOCATION: 2 miles south of Felton, De. on U.S. 13 at the Kent Packing Building.

2 Massey Ferguson 1135 diesel tractors (1977), 5 FORD 7000 Diesel tractors (1974), FL 44 White/Oliver forklift (1974), Oliver 6x16" semi-mounted plow, M.F. #880 6x16" on land plow, Midwest chisel plow, 2 M.F. 7"x6" fold up disc harrow, 12' disc harrow, Int. Harvester crust buster 21 tyne no-till grain drill, Clark sprayer, J.D. 3 row cultivator-RM tyne, Harrogator, header for tomato harvester, RC-25 FMC crop air sprayer, 500 gallon stainless steel tanks and chemical applicator, Marlow PTO irrigation pump, 48 pieces 30"x16" and 35 pieces 40"x6" irrigation pipe.

Trucks

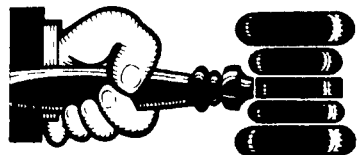
1974 Ford Louisville 9000 truck tractor with 290 Cummins engine & twin screw
1970 Dodge utility truck.
1963 Mack 6 wheel truck.

TERMS: Cash or Approved Check.

Owner
LEONARD FARMS, INC.

Sales Mgr. & Auctioneers
C.T. SCUSE & SONS, INC.
302-653-7530

Lunch



AUCTIONEER'S DIRECTORY

**WOLGEMUTH
AUCTIONEERS**

R.D. #2 Mantle m. P.

COMPLETE
AUCTION SERVICE

CH
PH 717 665 5664

BOB
PH 717 665 6684

DENNIS
PH 717 627 0571

NOTICE

To assure that your Public Sale appears in the Public Sale Section we must have your advertisement by 4 P.M. Tuesday of each week's publication

General Auctioneers - Specializing In
Liquidation of Personal Property,
Equipment, Antiques, Real Estate



Alfred G. Reist
1050 Eden Road
Lancaster,
PA 17601

Licensed • Bonded
Lancaster 717-569-2079
Evenings/Lititz
717-627-8008

PROFESSIONAL Auctioneering

PAULE MARTIN
R.D. 1 Box 553
Stevens Pa 17578

JOHN D. STAUFFER
217 Andrea Dr
Lititz, Pa 17543

Complete Auction Service - We assist you and advise you from the planning stages of your auction to the completion of your auction

For A Consultation In Your Home Call
Paul (717) 733 3511 - John (717) 665 5099
Licensed and Bonded

KREIDER & KLINE AUCTIONEERS

COMPLETE PROFESSIONAL AUCTION SERVICE
REAL ESTATE - FARMS & RESIDENTIAL
PERSONAL PROPERTY - ANTIQUES -
FARM STOCK SALES - LIQUIDATIONS

RANDAL V. KLINE
AUCTIONEER REALTOR
717 733 1006
717 569 8701

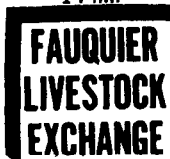
LLOYD H. KREIDER
AUCTIONEER
717 786 3394

ROY E. GOOD, JR.

RD 1 BOX 141 A
DENVER PA 17517
215 445 4309

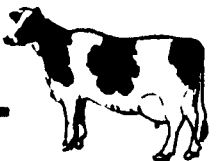
**SALE EVERY
TUESDAY**

Graded Sale
1st Tuesday each
month
2 P.M.
Horse Auction
2nd Saturday each
month
1 P.M.



Marshall Va
703-364-1566

**HOUSERDALE FARM
COMPLETE MILKING HERD
& BRED HEIFER DISPERSAL**



FRIDAY, DECEMBER 12, 1986

11:00 A.M.

Located in Centre Co. at Woodward, Pa., off Rt. 45 at the West end of Woodward on Cemetary Road; go the T - make a left - first farm on left.

61 Registered Holsteins 61

Herd consists of 46 Mature Animals, 6 heifers to calve before sale, 9 heifers bred for later.

Certified & Accredited - Majority Calhhood Vaccinated

DHIA Records - Classified

(30 Day Test- Vacc. for Shipping Fever Complex)

Selling 2 EX Animals; 5 V.G. and a Lot of GP 2 & 3 yr. olds; Selling 4 animals with EX-MS and 10 VG-MS.

RHA - 16407m 3.70%, 605f - BAA 103.

21 Animals in this Dairy are milking with either their 1st or 2nd calves: 13 Animals recently fresh & 6 heifers to calve before sale day; 8 due for January, 3 due for Feb., March & April.

SPECIAL FEATURES-

An EX-90 pt. Jerry; due in January to Ned Boy-Projected over 20,000 this lactation; Dam is a VG-88 pt. Elevation with over 25,000m This animal was a contract cow with 3 progeny sold into A-1 Service.

Also selling is a daughter of the Jerry; due in January and sired by Chairman-Bred to Ned Boy.

AN EX-91,3E Elevation with over 100,000 lbs. of milk.

Also selling is an 88 pt. Jemini Daughter- 4 Yr. record- 22,000m 3.60 800f; Sells fresh with Ned Boy Heifer Calf and a fancy 1st-calf heifer by Spirit (also just fresh).

An 86 pt. 3 yr. old Jet Stream bred to Mandingo-Proj. to 20,000 650f this lactation Dam is 88 pts with a lifetime of 175,000; Mat. Sister to the Jet Stream by Chairman also selling.

Sires Represented Include-

5 Animals by Elevation; 7 by Chairman, 4 by Sunny-Craft Chief Spirit, 4 by Shardale Arlinda Chief Jemini.

Also selling 2 Whittier-Farms Ned Boy Calves.

Service Sires Include— Spirit, Ned Boy, Chairman, Mandingo, Modic Valiant Count & More

This Dairy is just a year away from one of the Best!

1 Cow on the Elite List

17 Animals have dollar values from 88 to 99 dollars.

"There is something in this Dairy that will suit everybody's pocketbook; from the man that needs a Good Fresh Heifer to the Serious Breeder looking for Foundation Stock."

Sale By



Landisburg, Pa Lic. #500
717 789-3883

Auctioneer: Jim Smith

DAVID & CECILIA HOUSER, Owners
R.D., Box 75, Woodward, Pa.
814 349-8809