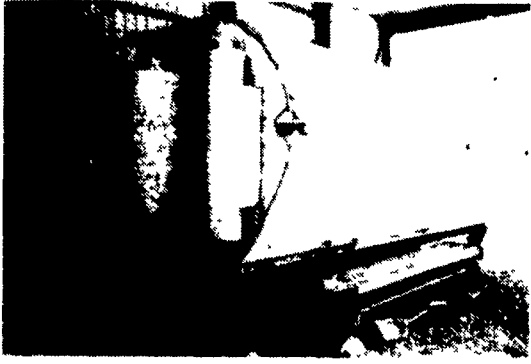


**35 TRUCKS AND TRAILERS**

LOG SPLITTER: 8 h.p. engine, 17 ton 2 Stage hydraulic pump, highway tires, ball hitch, heavy duty unit, new, \$850 215-346-7340

**(2) ALUMINUM DUMP BODIES**

For Tri-Axle Truck, 16' Long  
Call Zook Molasses Co.  
800-662-7464



**18 ft. Sprout Waldron**  
4½ Compartments

**Complete with Drawback Unit Built By Eastern Mobile Mills**

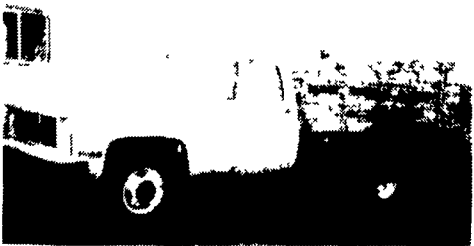


**Good Poultry Services, Inc.**  
Poultry & Feed Haulers  
R D 3 Box 87 Columbia Pennsylvania 17512  
717 684 2228 717 285 3628



**1982 Suburban Silverado**  
4x4, 6.2 Diesel, AT, PS, PB, A/C, Tilt, Cruise, Real Clean. High Miles But Runs Great.

**\*6450<sup>00</sup>**



**1986 GMC Sierra 3500**  
350, AT, PS, PB, 4 Speed, Dual Wheel, 9' Stake Body, 10,000 GVW

**\*11,500<sup>00</sup>**



**1985 Chev C30**  
10,000 G.V.W., 15 Ft. Aluminum Walk In, 350, AT, PS, PB, Like New, GMAC Repr. Only 2,000 Miles

**\*12,950<sup>00</sup>**

**FOUR WAY AUTO SALES**

P.O. Box 444, R.D. #3  
New Holland, PA 17557  
**(717) 354-3199**

**NEED CASH? We buy unwanted trucks and parts, scrap aluminum of any kind. Wrecked dumps, vans, flats, tank trailers, etc. Call 215-944-9871**

Summit 32' aluminum dump trailer, heated body, new ½" floor. 609-259-2413 after 6 p.m

Trailmobile 40' grain trailer, 4' sides, tarp & bows 609-259-2413 after 6 p.m

Tri Star 26' 15" step flat trailer 215-767-5512

Two 35' flat trailers with 4' sides, tarps, and chains Ready to haul grain. \$1,200 or Best Offer 609-261-8184, Burl Co., NJ

**UTILITY TRAILERS**  
15" Wheels, 2" Ball Hitch, Fenders, 2" Pine Flooring, Lights, 4000# Rating, 4x8 Tilt Bed = \$650 5x10 Tilt Bed = \$700. 6½x10 Tilt Bed = \$750. Other sizes available. Phone 215-346-7340.

Int. S model truck tractor, Cummins engine, big cam 350 formula 3, approx 75,000 mile warranty on engine, 9 spd Road Ranger trans., 11-22 tires, 75% rubber, \$18,000. 302-653-7823

**36 REAL ESTATE**

290+ Acre Dairy farm, modern 100 cow & free stall parlor complex, 3 Harvestore silos, 2 heifer barns, manure storage, large house, productive land Buildings worth asking price. Call for details. 814-848-7478

3 acre wooded lot, Lanc Co., Rapho Township, Wisegarver Rd. Asking \$29,500. 717-564-1478

FOR SALE: 1285 acre dairy farm, 400 tillable acres, 118 tie stall barn w/pipeline milker, 2,000 gal bulk tank, heifer barn, 3 silos, liq. manure system, four houses, two mobile homes, completely stocked and equipped. Located in the Saint Lawrence Valley, New York area Call for details. 315-347-2098.

FOR SALE: FARM, 200 acres, 60 tillable. Borders Susquehanna River. Home & large barn. Along Rt. 14 near Dalmatia, PA. North. Co \$750 per acre 717-692-3616

FOR SALE: Profitable 13 acre veal farm Barn holds 200 calves 3BR ranch home Located near Lewistown, PA. Asking \$88,000. 717-899-6430.

If you're looking for a farm, land or have any other real estate needs, you'll find what you want in the Real Estate classifieds. 717-394-3047 or 717-626-1164

**36 REAL ESTATE**

144 acre dairy bank barn w/72 free stall barn attached, 3 silos, 4BR house, sheds, garage, productive land; OR 219 acre dairy bank barn, silo, sheds, garage, 4BR house, quality land. One for \$350,000. Montour Co 717-437-2067.

170A. modern equipped dairy farm with 46 tie-stalls. Large house, and other out buildings. \$254,000. Call Phil Ruegg, Realtor, 717-249-7444.

72 acre Dairy Farm in Morrison's Cove. House & barn w/31 tie stalls, pipeline milker, bulk tank, 3 silos, gutter cleaner & meadow w/nice stream. For more information call: 814-793-2872

**88 ACRE CUMBERLAND COUNTY DAIRY FARM:**  
100 free stalls w/ computerized feeding, double six parlor, three silos, manure storage. Three-car garage and restored stone house. John B. Niesley, R/E, 717-243-7575 (before 8, after 5).

Berks Co.: Stone farmhouse, 4 bedrooms and bath, large modern kitchen, living room, laundry and powder room on 1st floor. 2 large barns and other buildings, ideal for hogs, cattle, horses, storage. \$85,000. 215-775-0508 or 777-0052

For Sale: 116 acre farm, in Milroy area. 717-667-2201 after 6 p.m

For Sale By Owner. Approximately 140 acre farm, bank barn set up for swine, 5,500 bu. grain bin, Mix Mill factory, 40x400 broiler house, pond, large 2 family house. Western Schuylkill Co., PA 717-648-4078.

For Sale: Productive 98 acre hog farm breeding to market operation, large 9 bedroom remodeled farmhouse. ERA Brownstone Real Estate. 717-273-9366

For Sale: Well established layer farm, housing 60,000 hens, fully automated, perfect location to markets. ERA Brownstone Real Estate. 717-273-9366

**FREE CATALOG!** Describing numerous PA farms, camps, acreage, cottages, homes and businesses. Write Dept. LF, WEST REAL ESTATE AGENCY, INC., 5528 William Flynn Highway, Gibsonia, PA 15044. 412-443-1200, IN PA 1-800-922-1235.

HOUSE FOR RENT IN SOUTHERN YORK CO. 717-862-3833.

Juniata Co. 100 acre dairy or beef farm, 70 acre fertile soil, 15 acres along Juniata river, pasture or recreation. 7 room house, bath, barn and silo, machine shed in good repair, old Route 22. 717-436-2466

**DO YOU REALLY WANT TO SELL YOUR FARM?**  
For personal service contact  
**Van Cleve Real Estate**  
915 Mondale Rd., Lancaster, PA 17601  
Phone **717-392-3032**



**REAL ESTATE REALTORS**  
Hanover  
Gettysburg  
York and  
Westminster  
Valley Farm

Beautiful 910 Acre York County farm High producing soil 4 homes, large barns, grain bins milking parlor Terms negotiable Assumable mortgage L 4954  
**717-632-6400**

**YATES COUNTY NEW YORK**  
North of Penn Yan, in the heart of the Finger Lakes. The best vegetable soil in the area. 119 acres - some woods and some muck land. Fix up farm house and small barns. City water. Call on 120A.

**Century 21 Four Seasons**  
Penn Yan  
**315-536-7456**

For Rent 2 bedroom, ½ double house, near Manheim Auto Auction, \$200/month, security deposit. 717-564-1478

Northern NY Dairy Farm, 100 acres, all open & tillable, \$95,000. Cattle, Equip & Real Estate, \$150,000 315-328-4646

**THREE ACRE FARMETTE.** Large frame house, exterior excellent condition, hot water heat, wood & oil, 1½ baths, 5 bedrooms, needs some interior decorating. Stone bank barn ideal horse farm. Access to many riding trails. Berks Co Near Lebanon Lancaster line. 5 minutes from Robesonia \$89,900. Beautiful mountain setting. All Star Realty, 215-378-5300

Wanted 100 to 200 acre grassland farm, center-eastern Penna. Call ERA Hop Usner & Associates, 717-738-2005.

Wanted to Rent or Lease Purchase Dairy Farm for 50 to 60 cows within 45 minutes of Hershey. 717-865-5916 after 8 p.m

**YORK COUNTY** 100± acres, house, barn, apple storage building, small stream, road frontage, subdivision possibilities, \$195,000 Anchor Realty, 717-225-3643.

**FREE CATALOG**  
#56 Farms, Homes & Businesses in 15 States  
**American Farm Digest**  
3546 Watson Rd.  
St. Louis, MO 63139  
**800-325-9943**

**FOR SALE**  
Steuben County, NY  
204 acre dairy farm, 40 tie stalls, pipeline, tank/washer, 2 concrete silos/unloaders, (1) bunker silo, (2) machine sheds, 5 bedroom home. Complete w/all cattle & excellent line of equipment. \$225,000.  
**607-359-2674**  
Evenings  
After 7 p.m.

**PRICED FOR QUICK SALE**  
170± Ac. Working Dairy Farm. 120± Ac. tillable, 45± Ac. pasture, 3 silos, barn cleaner - 1 yr. old, dumping station, cattle and equip.  
\$175,000 - less Cattle and equip. - \$155,000.

**Century 21**  
**Jackson Real Estate**  
RD #2, Wysox, PA 18854  
**717-265-2100**  
Layton C. Kingsley, RA  
**717-596-3910**

**FOR SALE**  
122 Acre Dairy Farm, limestone soil, brick house, two 12x55 silos. 3 miles South of Shippensburg along hard road. \$1,300 per acre.  
**717-532-3989**

**FOR SALE**  
4 Bedroom house w/2 car garage & small barn situated on 95 acres in the Hammonsport Area of New York State Small pond & fenced pasture - 40 acres wooded, 45 tillable - small hunting cabin - low taxes Asking \$81,500 \$71,500  
**215-298-3202**

**187 Acre Dairy Farm**  
58 tie ins, loafing barn, pipeline milkers, 3 silos/unloaders, equipment shed, and much more. 3 BR house and additional barn and house in need of repair. Possible owner financing. Perry Co.  
**717-789-3483**

**FOR SALE**  
Prime river bottom ground in Clinton Co.  
**Parcel #1:** 120 acres including drainage tile (ABI, ATP125 reel system) available. Underground irrigation main. 4BR frame house, barn (green tomato packing shed), planted in winter wheat Available now  
**Parcel #2:** 89 acres, 5BR remodeled house, large barn w/truck bays (great equipment repair facility), grain facilities including (24,000 bu. dry and 25x90 Harvestore), MC-665 continuous flow grain dryer. Available now  
**717-748-2563**

**So. Northumberland Co. & Surrounding Counties.**  
181 Ac. Beef Farm, 150 tillable, lge. brick home completely remodeled. Built in 1851, \$275,000. This farm can be bought in smaller acreage. Call Peter.  
500 Ac., 365 tillable, Grain & Hog Farm, \$579,000. Call Peter.  
No Money Down. 44 acres, 2 homes & barn, 20 tillable. \$89,000. Call Peter.  
**PETER B. CORTELYOU**  
Real Estate Herndon, PA 17830  
Peter B. Cortelyou, Broker 717-758-9177  
Bob Yarger, Sales Assoc. 717-648-6217  
George Wolfgang, Sales Assoc. 717-648-3201

**NORTHEASTERN LANCASTER CO. HORSE or BEEF FARM**  
Approximately 87 acres of land available, 15A of fenced pasture, 58A tillable and a 3A lake. Present owner will take back 29 acres, leaving 35 acres surrounding the stone home, plus eight (2 acre) lots already subdivided and perked. All outbuildings in good condition, barnyard fenced and concreted. Don't delay, call today for details.  
**HOFFER & ASSOC.**  
9 West Main St.  
Ephrata, PA 17522  
**717-738-4261**  
**717-626-4821**

**IMPECCABLE FAMILY DAIRY**  
Truly a showplace in every category with special private setting & quality. 230 acres, 130 tillable finest loam soils w/exc. drainage. Grows super alfalfa in large level fields. Beautiful modern tie stall barn for 90 head w/pipeline, liquid manure system, 2 silos. Exc. machinery buildings. Colonial home is immaculate w/4 bedrooms, massive stone fireplace, beautiful living areas w/large picture windows. Owners are meticulous in all phases of their operation! \$275,000 with owner terms for strongest candidates. Registered Holstein dairy & superb A-1 machinery line up available.  
**Homestead Realty**  
Farm and Rural Property Specialists  
Auriesville Road RD 1  
Fultonville NY 12072  
**(518) 922-6301 OR (518) 922-8899**