

35 TRUCKS AND TRAILERS

FOR SALE. '72 Ford school bus, running condition. Make Offer 717-733-9723.

For Sale. 20' gooseneck stock trailer. 1981 Raw Hide 609 737-9319 Evenings after 6 p m

For Sale '79 Mack tractor, cab over. 375 hp. 10 speed, twin screw. PS. AC. air ride cab. \$9,500 717-896-8347.

For Sale 9' Stoltzfus lime and fertilizer spreader body. all hydraulic controls. 717-428-2748.

For Sale Feed Body. would make good manure spreader tank. 717-272-5089

For Sale Transfer Trailers, all sizes; Demolition Dumps; Low Boy detachable trailers, 40, 50 & 60 ton. Used trucks, dumps, grain dumps & rollbacks. Keith walking floors, sold & serviced. 814-623-9696 or 814-623-8696

Freightliner 1971 nonsleeper glider kit, very good rears, 38,000 lb. 4.61 ratio w/rubber; 6SP low hole Mack transmission; Mack rear boggie, 38,000 lb. 5.13 ratio; ENDT 864 V8 Maxidine engine, complete or for parts. Lebanon Co. 717-272-9595.

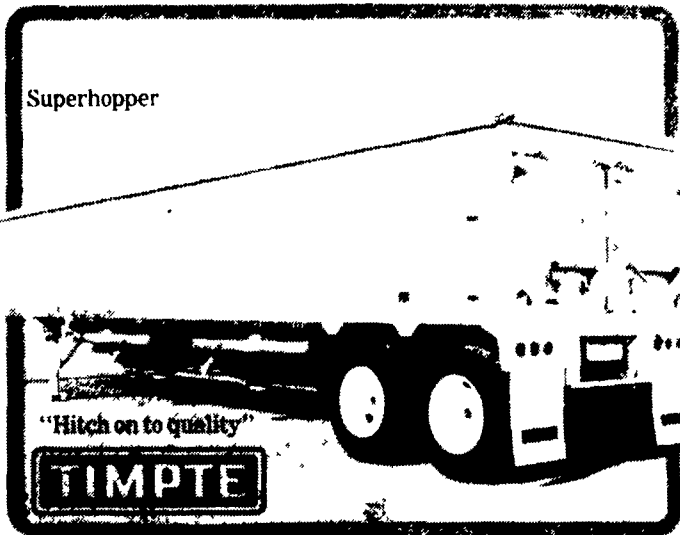
Gooseneck trailer, triaxle, Beavertail, w/ramps and top deck, \$3,500 OR triaxle tag-along, \$2,200; Field Queen side dump wagon, \$3,000. Berks Co. 717-866-4280.

HAY HAULERS: 45' Raven trailer & Mack twin screw tractor. 717-324-2841

Hale double axle stock trailer, 16' long, 5' wide, 5' high, no license, no brakes, \$300. 215-267-5641



BUY A 1987 TIMPTE LIGHTWEIGHT GRAIN HOPPER NOW



Got Grain? Then get the trailer that is TimpTE tough... the Super Hopper. It's not only built to take it...it's also built to cut fuel costs. The Super Hopper is lightweight and aero-dynamically designed to reduce wind drag. When there's grain to be hauled, TimpTE does the haulin' best and pulls a lot easier than the rest.



USED HOPPER FOR SALE

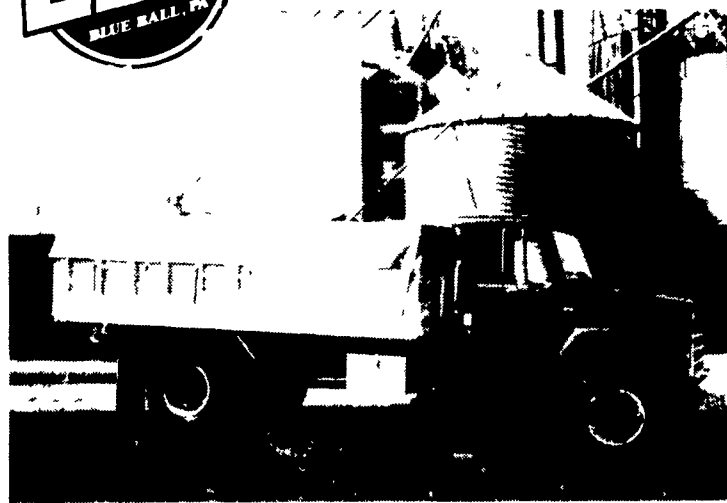
1982 w/40'x65" Sides, Aluminum TimpTE Grain Hopper

M.H. EBY, INC.

Box 127, Blue Ball, PA 17506 (717) 354-4971



ALUMINUM GRAIN BODIES



Got Grain To Move? Considering A New Body To Move It? Why Not Check Out The Features Of An Eby "Built To Last" Grain Body. Then You Be The Judge. I Think You'll Agree With Hundreds of Other Satisfied Owners, An Eby Body Is Not Just A Purchase, It's An Investment!

CHECK OUR FEATURES:

- **Weight-** 20-30% less than steel and wood construction
- **Maintenance-** aluminum construction won't rust, requires no painting
- **Durability-** built "Eby tough", heavy structurals, new aerodynamic side posts and aluminum floor and sides.

If It's Aluminum

And Hauls Agriculture Products

It Must Be From Eby

M.H. EBY, INC.

Box 127, Blue Ball, PA 17506 (717) 354-4971

Mark VII - Pickups - Broncos - Bronco II - Stake Body - Crew Cab -

SHEEHY FORD LINCOLN MERCURY INC.

For All Your Farming Transportation Needs Through The F800 Series

BRONCOS DIESEL PICKUPS CHASSIS CAB CARGO VANS 4x4 RANGERS PICKUPS
BRONCO II SUPER CAB CREW CAB STAKE BODY BOX VANS XLT CUSTOM VANS

SHEEHY HOTLINE 717-272-7671

Unless This Emblem Is On Your Car Or Truck You Probably Paid Too Much



9-9 Daily
9-5 Sat.
717-272-7671

SHEEHY LEBANON

Parts Dept. Open
Daily 8-5
Sat. 8-12
717-273-8168*

20th & Cumberland St., Lebanon

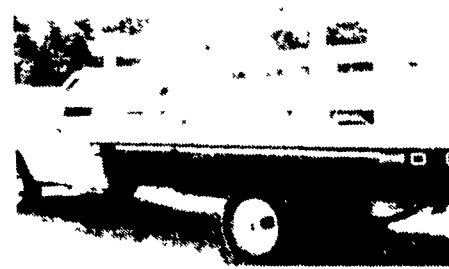
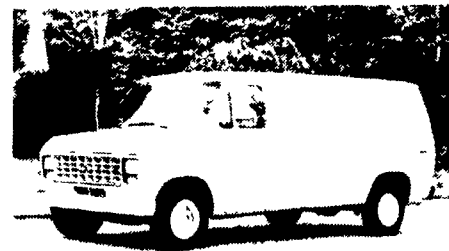
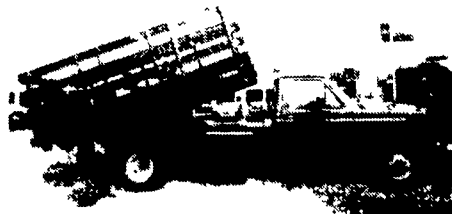
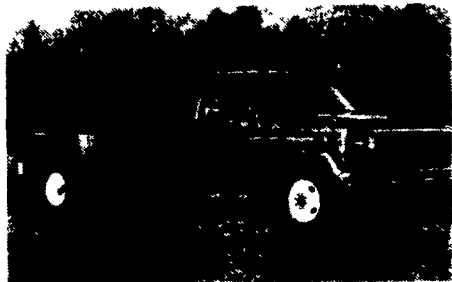
SPECIALS

• \$1500 Discount
On
Econoline Vans

• Escort Financing

Starting At
3.9%

* Parts Hot Line 800-227-0272



Tempo - Cougar - Continental - Town Car - 4x4 - Box Van - Rangers -

Custom Vans - XLT - Grand Marquis - Marquis -

Lynx - Topaz - Diesel Pickups - Mustang - T Bird