

Livestock market and auction news

Some markets not covered by PDA or USDA due to holiday

Mercer Livestock Auction

Mercer, Pa.
Tuesday, November 18, 1986
Report Supplied By PDA

CATTLE 395...PDA. Few High Choice slaughter steers 63.00-63.80, Choice 56.00-62.85, Good 52.50-56.50, Standard 45.00-53.00, few Utility 40.50-44.50. Choice slaughter heifers 54.50-60.00, Good 50.00-54.75, Standard 43.50-49.00, Utility 38.00-43.00. Breaking Utility and Commercial slaughter cows 35.00-38.25, few 40.10, Cutter and Boning Utility 32.50-36.00, Canner and Low Cutter 28.00-33.00, Shells down to 20.00. Yield Grade No. 1, 1100-1700 lbs. slaughter bulls 41.00-46.00, No. 2, 900-1400 lbs. 38.00-40.50. Feeder Cattle: Medium Frame No. 1, 290-350 lbs. steers 50.00-58.00, 600-900

lbs. 47.00-52.00. Few Medium Frame No. 1, 350-700 lbs. bulls 44.00-48.00.

CALVES 124...Few Good vealers 55.00-62.00, Standard and Good 90-120 lbs. 45.00-53.00, 60-85 lbs. 38.00-46.00, few Utility 50-80 lbs. 18.00-30.00. Farm Calves: Holstein Bulls 90-125 lbs. 65.00-100.00.

HOGS 275...US No. 1-2 230-255 lbs. barrows and gilts 53.50-54.10, lot (14 head) 253 lbs. 55.75, 1-3 225-250 lbs. 52.50-53.60, 2-3 250-265 lbs. 51.00-52.00, 1-3 150-200 lbs. 40.00-44.00, 2-4 250-295 lbs. 49.00-50.00. Few US No. 1-3 350-550 lbs. sows 48.00-50.00, 2-3 300-600 lbs. 45.00-47.00. One Boar 44.00.

FEEDER PIGS 0...No market test.

SHEEP 1...No market test.

GOATS 5...10.00-20.00 — per head.

Keisters Middleburg Livestock Auction

Middleburg, Pa.

Tuesday, November 18, 1986

Report Supplied by PDA

CATTLE 547...Choice 1025-1485 lbs. slaughter steers 59.00-63.50, couple to 65.10, Good 53.00-60, few down 49.00; Choice holsteins 53.00-58, couple to 60.00, Good 50.00-54.00, few Standard 42.00-47.00. Choice slaughter heifers 52.00-56.75, Good 46.50-52.00, few Standard 42.25-46.00. Breaking Utility and Commercial slaughter cows 35.00-37.60, couple 40.50, Cutter and Boning Utility 34.00-36.50, Canner and Low Cutter 30.75-34.25, Shells down to 27.00. Few Good slaughter bullocks 47.00-50.75. Yield Grade No. 1, 950-2100 lbs. slaughter bulls 42.00-50.00, No. 2, 850-1200 lbs. 32.50-41.50. Feeder Cattle: Large Frame No. 2, 450-800 lbs. steers 40.00-45.00. Medium & Large Frame No. 1, 400-900 lbs. heifers 38.00-50.00. Few Medium Frame No. 1, 450-650 lbs. bulls 47.00-52.00. CALVES 205...Few Low Choice

vealers 78.00-84.00, few Good 59.00-69.00, Standard and Good 70-100 lbs. 45.00-50.00, couple 52.00, Utility 50-80 lbs. 30.00-43.00. Farm Calves: Holstein Bulls 90-130 lbs. 55.00-93.00.

HOGS 473... US No. 1 220-240 lbs. barrows and gilts 57.00-58.25, 1-2 215-240 lbs. 55.00-57.00, 2-3 200-250 lbs. 54.00-55.00, 2-4 200-270 lbs. 50.00-54.00. US No. 1-3 280-650 lbs. sows 46.00-50.00, few 52.00, 2-3 270-550 lbs. 35.00-46.00. Boars 42.00-44.50.

FEEDER PIGS 520...US No. 1-3 20-35 lbs. feeder pigs 32.00-40.00, 35-50 lbs. 38.00-55.00, 50-65 lbs. 52.00-60.00 — all per head.

SHEEP 25...Few Choice 60-80 lbs. woolled slaughter lambs 63.00-69.00, lot Good 95 lbs. 54.00. Slaughter ewes 16.00-36.00.

GOATS 12...Large 35.00-77.00 — per head.

Valley Livestock

Athens, Pa.

Monday, Nov. 24

Report supplied by auction
Holstein Hfr. Calves 50.00-68.00.

Veal Calves 65.00-87.00.
Vealer Bull Calves 70.00-92.00.
Slaughter Calves 50.00-55.00.
Grassers & Feeders 30.00-47.00.
Lambs 50.00-68.00.

Sheep 20.00-35.00.
Hogs, 200 to 250 42.00-47.00.
Sows 40.00-48.00.
Boars 35.00-40.00.

Pigs each 15.00-37.50.
Heifers 36.00-42.00.
Steers Med. 42.00-45.50.
Steers, feeder 36.00-45.00.

Bulls 38.00-47.00.
Cows, utility 35.00-38.00, Top 40.00.
Cows, fat 35.00-38.00.
Cows, medium 33.00-35.00.

Cows, poor or small 25.00-31.00.
Cattle Market steady.
Calf Market real active.

Horses to 170.00.
Goats each 20.00-41.00.

Feeder Sale 1st Monday of Each Month.
Dairy Sale 3rd Thursday of Each Month.

You'll Never Know How Much It's Worth, Unless You Bring It To The Auction



KEYSTONE TOBACCO MARKETING GROUP

Garden Spot Tobacco Auction
P.O. Box 190, Blue Ball, PA 17506
717-354-6934

"The New Choice"

Paradise Tobacco Auction
P.O. Box 306, 19 Meadow Lane
Paradise, PA 17562
717-687-0990 717-299-3001

LIVESTOCK HAULING

Dependable Service
6 Possum Bottom Tractors
and Trailers
Call Anytime

Vintage Sales Stables, Inc.
L. Robert Frame Manager

Office 717-442-4181
Office & Home: 215-458-5060
Office & Home: 215-458-8518

CRIPPLED AND DISABLED

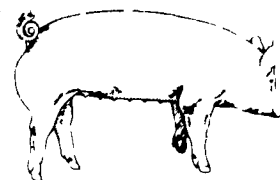
Cows, Steers & Bulls
For Slaughter Under
USDA Inspection

Call Wayne Taylor

717-866-6289

215-286-9400

Lebanon, Berks,
Lancaster & Chester
Counties



EMERY'S
BUYING
STATION

OPEN TO RECEIVE
YOUR MARKET HOGS

AT THE GREEN DRAGON MARKET
RD 4, EPHRATA, PA 17522
1 MILE NORTH OF EPHRATA
ON NORTH STATE STREET.

HOURS: MONDAY, TUESDAY, and
WEDNESDAY 6:00 A.M. to 11:30 A.M.
215-458-5677 Residence
717-733-9648 Office

YOU ARE PAID FOR YOUR
HOGS IMMEDIATELY

Ken & Lois Emery, Proprietors