

1 FARM EQUIPMENT

10' (Long) offset disk. 717-482-2103.
15,000 watt Niagra PTO alternator w/welder and small tool receptacles, \$600; gravity bin on 8 ton wide track gear w/ floatation tires and sliding tongue, \$600. 717-534-1253.

1816C Case Uniloader 1985 model, 300 hrs., very good condition, just serviced, 44" bucket with new cutting edge, 27x8.5 Diamond tread tires, \$4,650. 717-733-7725

1830 Case skid loader, 1976 Model w/dirt bucket, motor and drive recently overhauled, new wheels and tires along with a spare set of wheels and tires. \$6,500. 717-665-5827.

1981 7720, 4WD, 1,200 & some hrs., excellent condition, \$35,000. Larry Stalter, "The Combine Man". 814-635-3689

1983 Long 610SM, cleat track, 3 pt. hitch, PTO, single spool hydraulic, 64 h.p., 160 hrs., like new. Asking \$9,000. 516-765-1248

1984 Mayer power angle snow plow. 717-259-7262.

2 Acorn manure pumps, needs some repair; manure spreaders, 280 bu., Best Offer. 550 corn chopper for parts, 2 row corn head, pickup head, \$300. 717-746-1468

3250 gal. Calumet liq. manure spreader, good condition. Stump Acres. 717-792-3216. York County.

6600 Sidehill, hydro, in excellent condition, located in PA. \$15,800. "The Combine Man". 814-635-3689

7' Blades, \$195; Lift Booms, \$65; Platform Carriers, \$60; Bale Spear, \$148; 6 1/2 x 10' Landscaper trailer, 14" wheels, \$1075 or best offer. Union Co. 717-922-1851.

7 Tooth pull chisel plow, \$650. 269 NH baler w/ thrower, \$1100. IH 990 haybine, \$750. No. 7 NI cornpicker, \$500. 36' Elevator, new 1 1/2 hp motor, \$650. Irrigation PTO pump, 570 ft. 5 in. pipe, 500 3 in. pipe, \$1900. Equipment in good condition. Cumberland Co. 717-776-7636.

85 Ford F150 XLT, 4x4, 20,000 miles, factory spoke wheels, \$7,700. Coming Soon-'86 Ford F150 Super Cab, 4x4, 3,000 miles. Somerset Co. 814-893-5589

8820 JD combine, 2400 hrs., 24' flex head, 6R corn head 717-748-2563.

AC 7040, cab, air, duals, 1400 hrs., \$6,800. 301-833-9091.

Combines, corn heads, grain heads-inventory moving fast. It's hard to keep up with advertising. Wholesale prices only. Call us. "The Combine Man". 814-635-3689

CRAWLER TRACTOR PARTS
New and Used Parts Available for Cat, Allis Chalmers, IHC, Case, John Deere and others. Rubber tired construction equipment parts available for Hough, Michigan, Gallion and Cat Road Graders. Call or write for equipment and parts brochure. **VILSMEIER EQUIPMENT, INC.**
Route 309
Montgomeryville, Pa. 18936
Phone: 215-699-3533

Farmec 24' hay elevator, like new; High clearance Farmall A tractor w/ cultivators. 717-687-7968.

USED TRACTOR PARTS, also rebuilt clutches and torques. We ship UPS. Hill-T Farm Sales & Service, 4295 Richmond Palestine Road, New Madison, Ohio 45346 513-548-0718

AC D19 diesel, \$2,200. 717-687-8126

Allis Chalmers CA plow disc cultivator, planter, draw bar, 3 pt. hitch, sprayer auger. Needs work, \$5,000. 215-679-4715 after 4pm.

Also Better Built lagoon prop-pit agitator, excellent condition, \$2,000 negotiable. 717-788-3510

Antique Windmill, working condition. Best Offer. 215-489-1342

Deere 343, \$2,950.; 443, \$3,950.; 444, \$2,950.; Deere 213 rigid, \$1,950.; 814-635-3689 after 6 p.m.

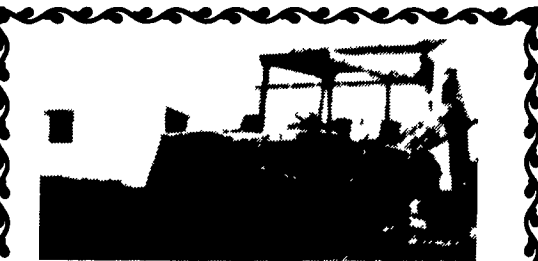
BACKHOE: JD 410, good condition, extend-a-hoe, \$8,500. 301-833-9091.

Belsaw, M-14 sawmill, brand new, 40' frame, 2 saw blades, 40" & 42", power take-off drive, asking \$2400. #34 JD front end loader, rebuilt bucket, asking \$500 609-881-2537.

Belt feeder, 60' Jamesway, 20' and 40' single chain clay elevators, complete 412-238-6350.

BRUSH HOG ROTARY MOWER, 3 pt. hitch, 4', \$450; 5', \$550.; 6', \$700.; 7', \$1,400. Trailer type, 5', \$700; 6', \$850. New. 215-346-7340

Case 450 Crawler Dozer, 6-way blade, \$9,500. Dennis M. Miller Equipment Sales, 717-469-0691 day. 717-838-1888 eves.



1975 JD 410
\$9,895
215-267-6547

Cowan Equipment
Martinsburg, PA

814-793-4293 Day or Evening

- JD 2350, 4WD \$14,500
- JD 2940 \$11,500
- JD 2840 \$8,500
- JD 2640 w/145 Loader \$10,500
- JD 4430, power shift \$8,750
- JD 4430, cab, air \$11,000
- JD 4230, cab, air \$11,000
- JD 4030, cab, air \$10,500
- JD 4520, power shift \$7,000
- JD 4320 \$8,000
- JD 4020, power shift, side console \$8,500
- JD 4020, power shift, 68 model \$5,250
- JD 4020, 68 model \$6,500
- JD 3020, wide front \$6,500
- JD 3020, gas \$4,000
- JD 3010 \$4,500
- JD 2510, wide front \$5,000
- JD 2510, gas \$3,500
- JD 450 Crawler Loader \$10,500
- JD 100 Stacker, Like New \$3,500
- White 2-150, cab & air \$8,500

LORLIN TRACTOR SALES



JD 4440
Cab, PS, New Rubber, Sharp
\$16,500

OTHER TRACTORS

- JD 146, Loader, Valve \$2,300
- IH 806, Diesel, Torque \$4,500
- JD 3020 Diesel, WFE \$4,900
- JD 4020, Side Console, WFE ... \$5,900
- IH 1026, Hydro, Nice \$6,900
- JD 4430, Cab, Dual Hyd. \$9,800

717-532-8926

Can Finance No Sunday Calls

Daffin Hammer Mill mounted on a 1963 Int. truck w/453 Detroit diesel under the hood, to run the mill & mixer, good running condition. Lanc. Co. 717-393-9266

Deere 3300, 10' head & corn head, \$7,500. "The Combine Man", 814-635-3689.

Deutz 100-06, cab, very good condition. \$6,800 / Offer. 301-833-9091.

Combine 750 MF diesel, gear drive, air condition, straw spreader, bought new 1980, used 2 seasons, approx. 350 hrs. Older 13' grain head w/new auger, 6 row 63-C 30" corn head. Priced To Sell. \$24,000. Robert Shaub, Shrewsbury, York Co., Pa. 717-235-3309 after 6 p.m

CRAWLER DOZER: Case 750, excellent undercarriage, power tilt, \$6,000. 301-833-9091.

AC 160 tractor w/loader, good condition, buckets and fork, \$3,800. 215-286-5373

AC 6R no-till planter w/monitor, liq. fert., squeeze pump, mounted sprayer, fiberglass corn and insecticide hoppers, \$750. 717-534-1253.

Farmers & Dealers - Your advertising pays for itself when you advertise your equipment in the farm equipment section 717-394-3047 or 717-626-1164.

FOR SALE: Allis Chalmers 6070 tractor, like new, excellent condition, 800 hrs. 215-273-9884.

FORRESTER FARMS

1337 Lincoln Highway East
Chambersburg, PA 17201
Phone: 717-263-0705
Sales - Parts - Service

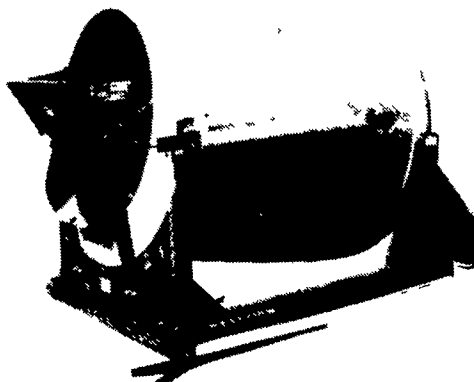
- Ford 8N
- (2) Ford 2000
- Ford 2000 Gas
- Ford 2910
- (2) Ford 3000
- Ford 3600, 1981 w/PS
- Ford **SOLD**/cab
- Ford 3910
- Ford 4000 1966
- Ford **SOLD**gas
- Ford 4100
- Ford 4110
- Ford 4600
- (2) Ford 5000
- Ford 6600, 4WD
- Ford 6610
- Ford 7000 DP
- (2) Ford 7700 w/cab & DP
- Ford 9700 cab DP
- Ford TW15 w/cab & air
- Ford TW20, cab & air
- JD 1630
- (4) JD 2130
- JD 3120
- JD 3130
- (2) JD 4040, 2WD
- JD 4040 **SOLD** w/cab
- (2) JD 4240 2WD
- (2) JD 4240 4WD cab & air
- JD 4640 w/cab, 4WD
- Farmall H
- IH 574 Gas
- IH 986
- MF 35 **SOLD**
- MF 285
- MF 1080
- Ferguson **SOLD**
- Universal 550 4WD

Just In Time For Christmas
A Large Selection Of Farm
Toys, Including New Arrivals
From Across The Seas

We also have a large inventory of tractors at our other location at 4530 Olde Scotland Rd., 1/4 mile off Exit 8 on 696 North.

1/4 Mile East of Exit 6 I-81 on U.S. 30
Hours: 8:30-5:00 Mon.-Fri.
8:30 - 12:00 Saturdays

We Have Won The Competition
Over With Our Design



Now Let Us Win You Over
With Our Price

TMR Mixers
By



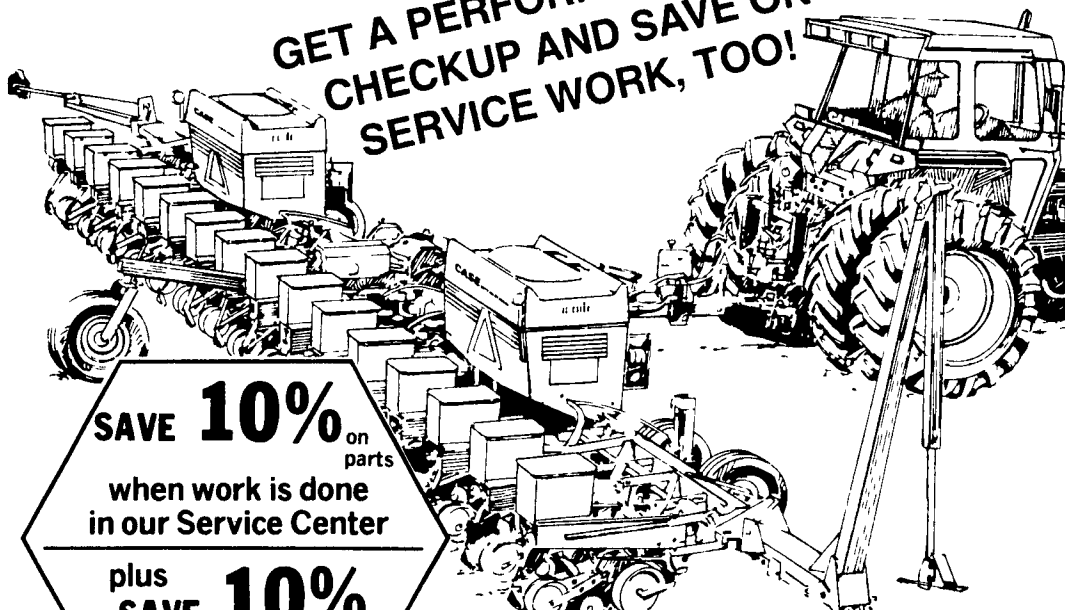
ZIMMERMAN'S Bethel, Pa.
FARM SERVICE 717-933-4114

PARTS VALUE
OF THE MONTH

Pre-Season
Service
Savings

**BE READY FOR
SPRING**

GET A PERFORMANCE PLUS
CHECKUP AND SAVE ON
SERVICE WORK, TOO!



SAVE **10%** on parts
when work is done
in our Service Center
plus
SAVE **10%**
on labor

Get your tractor and equipment
in top shape for the busy season
and save at off-season prices.

Don't wait until the busy season hits. Get your tractor
ready to roll now at special Pre-Season Service Savings.

Don't Delay...Call Doug Today
WE SHIP UPS

MESSICK FARM EQUIPMENT, INC.

Farm Equipment Is Our Business
RHEEMS EXIT, RT. 283, ELIZABETHTOWN, PA
Phone: (717) 367-1319, 653-8867 OR CALL TOLL FREE 1-800-222-3373
We Ship UPS