

Lancaster 4-H Beef Roundup

(Continued from Page A30)

Michelle Nissley, Chris Miller, Derek Nissley, Jeremy Longenecker, Vicky Hess, Fred Weaver, Anna Marie Frey, Deb Wolgemuth, Jay Hess, Angie Longenecker, Jodie Weaver, Doug Musser, Emily Weaver and Joe Garber.

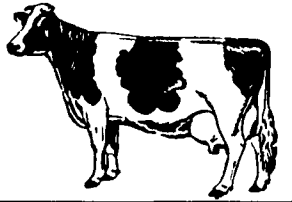
Exhibitors of the grand champion and reserve steers aren't the only big winners at the Lancaster roundup. The event's grand champion showman receives a calf—hopefully a winning 1987 show prospect—from the Lancaster Intelligencer Journal. The reserve champion receives a check for \$300 from Lancaster Farming. This year's Intelligencer calf recipient was Scott Hertzog, 15, the son of Mr. and Mrs. Ken Hertzog of Ephrata. Receiving the Lancaster Farming award was Jay Hess, 11, son of Mr. and Mrs. Abram Hess, Conestoga.

4-H Beef Roundup

- Class 1**
1 Heather Yoder 2 Lloyd Reiff 3 Jeremy Longenecker
- Class 2**
1 Fred Weaver 2 Vicky Hess 3 Marcy Harnish
- Class 3**
1 Anna Marie Frey 2 Deb Wolgemuth 3 Diane Musser
- Champion Lightweight**
Anna Marie Frey

- Reserve Lightweight**
Deb Wolgemuth
- Class 4**
1 Fritz Frey 2 Angie Longenecker 3 Jodie Weaver
- Class 5**
1 Emily Weaver 2 Doug Musser 3 Sharon Harnish
- Class 6**
1 Nichole High 2 Heidi Frey 3 John Leaman
- Champion Middleweight**
Fritz Frey
- Reserve Middleweight**
Nichole High
- Class 7**
1 Joe Garber 2 Brad Linton 3 Marsha Dehmey
- Class 8**
1 Jimmy Landis 2 John Hess 3 John Ketting
- Class 9**
1 Brian Hess 2 Stacey Linton 3 Julie Greider
- Champion Heavyweight**
Brian Hess
- Reserve Heavyweight**
Fritz Frey
- Grand Champion**
Fritz Frey
- Reserve Grand Champion**
Nichole High
- Showmanship**
Class 1
1 Jay Hess 2 Marcy Harnish 3 Brad Linton
- Class 2**
1 Jeremy Longenecker 2 Derck Nissley 3 Elizabeth Hess
- Class 3**
1 Jason Kline 2 Diane Musser 3 Nichole High
- Class 4**
1 Vicky Hess 2 Angie Longenecker 3 Jodie Weaver
- Class 5**
1 Scott Hertzog 2 Kristin Chupp 3 Doug Musser
- Class 6**
1 Emily Weaver 2 Joe Garber 3 Anna Marie Frey
- Champion Showman**
Scott Hertzog
- Reserve Champion**
Jay Hess

Major Dairy Sales And Dispersals Nationwide



No sales were available this week. Next week's report will cover a two-week period.

NATIONAL DAIRY COW SALE INDEX

©1986 Lancaster Farming Newspaper

This sale index can help dairymen place a value on the dairy cows in their own herds. Breed organization sales and private dispersal sales reported in Lancaster Farming are included in the dollar averages.

	Ayrshire	Brown Swiss	Guernsey	Jersey
Year to date:				
Nation	875	1079	1141	939
Pennsylvania	832	950	569	1019
Four previous weeks:				
Nation	667	1482	1224	1248
Four previous weeks +/- year to date:	208 lower	403 higher	83 higher	309 higher
	Holstein	Red and White	Milking Shorthorn	
Year to date:				
Nation	2057	1825	850	
Pennsylvania	1945	2837	922	
Four previous weeks:				
Nation	2815	---	---	
Four previous weeks +/- year to date:	758 higher	---	---	

KING Construction Co.

DESIGNERS & BUILDERS OF ALL TYPES OF FARM & COMMERCIAL BUILDINGS



WE SPECIALIZE IN HORSE BARN & POULTRY BUILDINGS

King Construction Co.
Box 166, RD#2
New Holland, PA 17557
(717) 354-4740

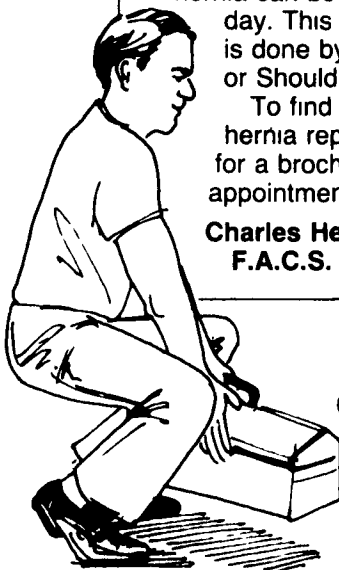
To prevent a hernia, lift with your legs.

The groin is the weakest point. With strain it may give way and cause a hernia.

Bend your knees to pick up a heavy object, then straighten your legs. When your legs are doing the work your groin and back are protected.

What if you already have a hernia? In most cases, a hernia can be repaired in one day. This outpatient surgery is done by the Canadian or Shouldice method. To find out more about hernia repair, call 397-5104 for a brochure or an appointment.

Charles Heisterkamp III, M.D., F.A.C.S.



Hogg & Heisterkamp

SURGICAL ASSOCIATES

719 North Duke Street
Lancaster, Pa. 17602
717 397-5104

5 3/4%

ANNUAL PERCENTAGE RATE
FINANCING

Ford compact tractors. At this rate, they may be the best buy going.

Compact tractors don't come any better than the 13 to 38-horsepower* Ford 1000 Series diesels. And now these high-quality units are an even better value.

Choose from seven models, all available with two or four-wheel drive: Ford 1110, 1210, 1310, 1510, 1710, 1910 and 2110

Buy and take delivery between July 14 and November 30, 1986. We'll help qualified buyers arrange low 5 3/4% financing for up to four years through Ford Credit.

Save 50% on 3-year Extended Service Protection.

During this special sale period, you may also purchase Ford Extended Service Plan protection for three years or 2,500 operating hours, whichever comes first...for only half of the regular cost

This is a limited time offer. Stop in soon for details!

*Gross engine horsepower



LANCASTER FORD TRACTOR, INC.

Your Lancaster County Reliabilos
1655 Rohrerstown Rd., Lancaster, PA
Flory Mill Exit off Rt. 283
(717) 569-7063

