

# Restful Acres Earns Dauphin County DHIA Awards

HALIFAX — The Dauphin County Dairy Herd Improvement Association and the county's Holstein Club held a joint annual meeting last week in Halifax.

Restful Acres of Hershey received the top production award with 21,023 pounds of milk and 742 pounds of fat. Other herds noted for outstanding production were: Roy Brubaker, Elizabethtown, with 705 pounds of fat; John

Hertzler, Elizabethtown, with 618 pounds of protein; and Catalpa Farms, Middletown, with 619 pounds of protein.

Robert Beach, Halifax, recorded Dauphin County's highest increases in milk production, with 2,847 pounds, and protein, with 80 pounds. Lauden Farms, Halifax, registered the largest increase in fat production with 63 pounds.

Herds honored for somatic cell counts under the 200,000 mark were Paul Clugston, Halifax, and Restful Acres.

Martin Grey, DHIA state board representative from the Central District, reported on the current issues at the state office. He touched on member representation, field service, due process, planning and financial progress.

Joe Padasak, regional DHIA manager, presented supervisors Jim Batz and Tom Tobias with the award of merit for outstanding performance.

The three newly elected direc-

tors for Dauphin County DHIA are Donald Shetterly of Millerburg, and Howard Kopp and Dale Brandt of Middletown.

Holstein Club directors elected were Earl Campbell, Gratz; David Feidt, Elizabethtown; and Dale Kennedy, Middletown.



The three newly elected directors for Dauphin County DHIA are Dale Brandt (left), Donald Shetterly and Howard Kopp.



Tom Tobias (left) and Jim Batz received the award of merit for supervisors at the recent Dauphin County DHIA banquet.

## Mandatory Production Controls

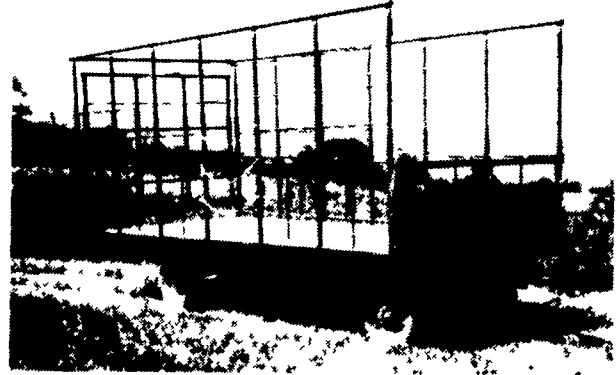
MADISON, Wis. — "Mandatory product controls are not the answer for the family farmer," said Deputy Secretary of Agriculture, Peter C. Myers in an address here today at the 120th annual convention of the National Grange. "Mandatory controls ask family farmers to spurn the most efficient and competitive ways of adopting to change and would make our great national agricultural machine shrivel. They're a prescription for turning a great nation into an economic backwater," said Myers.

"Instead of mandatory production controls, we need policies to restore our strength in world markets," said Myers. He indicated the programs, implemented by the 1985 Farm Bill, are accomplishing that goal. He said, "Wheat exports have increased by 25 percent and cotton and rice exports, under the marketing loan program, have made impressive gains."

In response to the Grange's position on the marketing loan program, Myers said the program had merit but would cost additional money. The Secretary expressed his gratitude for the Grange's efforts "that helped avert extremely protectionist legislation from being passed this year." He said both the House Omnibus Trade Bill and Textile Quota Bill, which the Grange opposed, "would have invited massive retaliation against American farmers."

Myers credited the 1985 Farm Bill programs for "getting the attention of our competitors." The Secretary and the Grange agree that the new export policies have brought the formerly intransigent European Community to the table and to agree to a key truce this spring. The European Community has also agreed to put all their subsidies on the trade negotiating table.

## BEST BUY of the YEAR



- 6" Steel Main Beam
- 2" Vertical Tubing Drilled so that the 1" Horizontal tubing extends Full Length of Wagon
- Front-Side and Rear Loading and Unloading
- 2x8 Pressure Treated Lumber Floor
- 2x6 Oak Cross Beams
- Beds are 8' wide, available in 16, 18 or 21' lengths. Racks are 90" high.
- NEW FEATURE: 6" Channel across back for pushing wagon without damaging bed.

FOR FURTHER INFORMATION, CALL YOUR LOCAL DEALER:

LOST CREEK  
IMPLEMENT  
Oakland Mill, PA  
717-463-2161

MELROSE FARM  
SERVICE  
Greencastle, PA  
717-597-3138

KELLER BROS.  
Lebanon, PA  
717-949-6501

DUNKLE & GREIB  
Mill Hall, PA  
717-726-3115

WALTER G. COALE, INC.  
Churchville, MD  
301-734-7722

TOBIAS EQUIPMENT CO., INC.  
Halifax, PA  
717-362-3132

NORTHEAST  
DISTRIBUTING  
West Clifford, Pa.  
717-222-9020

VALLEY IMPLEMENT  
SALES  
Harrisonburg, VA  
703-434-9961

CHAMBERSBURG FARM  
SUPPLY  
Chambersburg, PA  
717-264-3533

OXFORD GREENLINE,  
INC.  
Oxford, PA  
215-932-2753

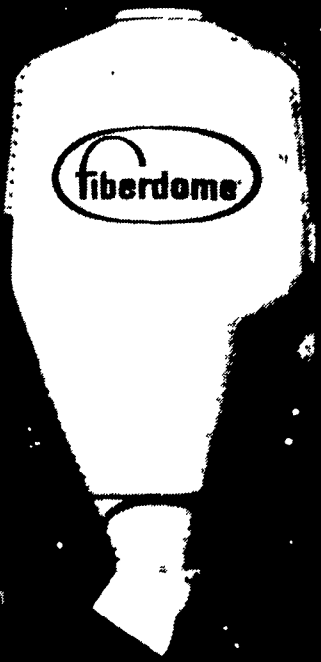
PAUL SHOYER'S, INC.  
Loysville, PA  
717-789-3117

A.B.C. GROFF  
New Holland, PA  
717-354-4731

CARLISLE FARM  
SERVICE  
Carlisle, PA  
77-243-4419

CLARK'S FARM SUPPLY  
Williamsport, PA  
717-494-0060

Enter the 20th  
Century—with a  
fiberglass bulk  
storage bin from  
Fiberdome®



- Eliminates bridging, won't rust or corrode
- Cuts heat buildup and condensation
- Feed stays fresh in any weather
- Precision engineered for long, long life
- Unique 5-year warranty
- Adaptable to any augering system

Write for information and a FREE sample of fiberglass—the superior, modern material for superior storage bins!



P.O. Box 11  
Lake Mills, WI 53551  
(414) 648-8376

...made to last

Manufactured By

## CLW MANUFACTURING, INC.

R.D. #2, Box 8  
Newburg, Pa. 17240  
717-423-6794