

# WOODS ROTARY CUTTERS



Models: HD 315, HD 210R, B320, B315, B214

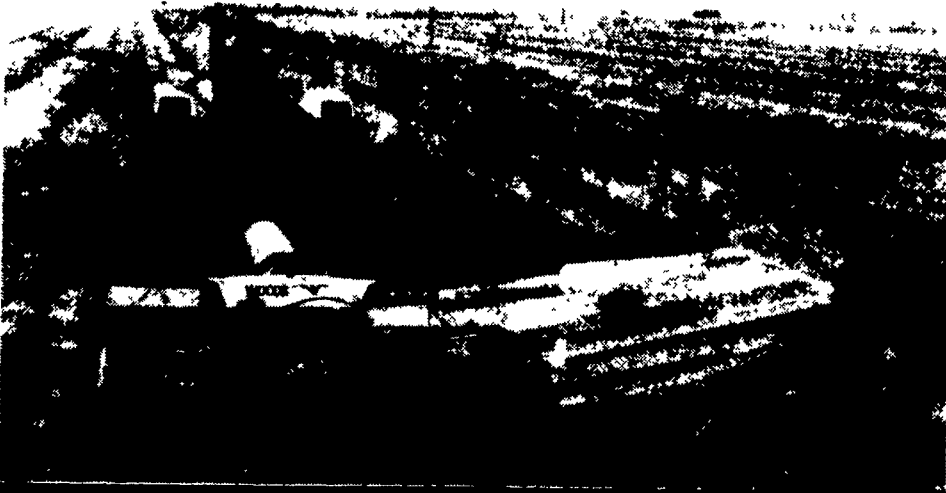
Cut Grass And Weeds.  
Clear Brush, Shred Stalks.

*Designed For Large-Area Mowing On Level Ground Or Rolling Terrain.*



### MODEL B315

Features 7-Foot Center Section & Two 4-Foot Wing Sections. Cuts A 15-Foot Swath With 540 PTO Tractors.



Division of Heeston Corporation

### MODEL B214

Features 7-foot center section and 7-foot right wing. Cuts a 13-foot 6-inch swath. Available for 540 or 1000 rpm PTO tractors.

- |   |   |   |   |  |   |
|---|---|---|---|--|---|
| <b>ADRACZINSKAS FARM EQUIPMENT, INC.</b><br>Catawissa, PA<br>717-356-2323 | <b>FINCH SERVICES HANOVER, INC.</b><br>Hanover, PA<br>717-632-2345                    | <b>KAUFFMAN FARM SUPPLY</b><br>Mt. Pleasant Mills, PA<br>717-539-4571<br>Belleville, PA | <b>LIGONIER SALES &amp; SERVICE</b><br>Ligonier, PA 15658<br>412-238-5790 | <b>OTT BROS. FARM &amp; APPLIANCE</b><br>McConnellsberg, PA<br>717-485-4114                                  | <b>TRACTOR PARTS CO.</b><br>Bloomsburg, PA<br>717-784-0250  |
| <b>BELMONT FARM</b><br>Glydon, MD<br>301-833-9091                         | <b>GRUMELLI'S FARM SERVICE</b><br>Quarryville, PA<br>717-786-7318                     | <b>KELLER BROS. TRACTOR CO.</b><br>Lebanon, PA<br>717-949-6501                          | <b>ROBERT E. LITTLE, INC.</b><br>Zieglerville, PA<br>215-287-9643         | <b>PIKEVILLE EQUIP. INC.</b><br>Oley, PA<br>215-987-6277   | <b>UNIONTOWN FARM EQUIP. CO.</b><br>Uniontown, PA<br>412-437-9851   |
| <b>B. EQUIP., INC.</b><br>Waynesboro, PA<br>717-762-3193                  | <b>HINES EQUIPMENT</b><br>Cresson, PA<br>814-886-4183<br>Bellwood, PA<br>814-742-8171 | <b>KELLER'S FARM MACHINERY, INC.</b><br>Quakertown, PA<br>215-536-4046                  | <b>CHAS. J. MCCOMSEY &amp; SONS</b><br>Hickory Hill, PA<br>215-932-2615   | <b>O.C. RICE, INC.</b><br>Biglerville, PA<br>717-677-8135  | <b>C. E. WILEY &amp; SON, INC.</b><br>Quarryville, PA<br>717-786-2895   |
| <b>NORMAN BRIGHT, INC.</b><br>New Egypt, N.J.<br>609-758-2211             | <b>WM HOBENSACKS SONS</b><br>Ivyland, PA<br>215-675-1610                              | <b>R.W. KELLER SALES</b><br>Perkasie, PA<br>215-257-0101                                | <b>MANOR EQUIPMENT, INC.</b><br>Sinking Spring, PA<br>215-678-0828        | <b>RINGTOWN FARM EQUIP. CO., INC.</b><br>Ringtown, PA<br>717-889-3184  | <b>CLARENCE WILSON &amp; SONS</b><br>Kimberton, PA<br>215-933-3581  |
| <b>NORMAN D. CLARK &amp; SON, INC.</b><br>Honey Grove, PA<br>717-734-3682 | <b>R.S. HOLLINGER &amp; SON, INC.</b><br>Mountville, PA<br>717-285-4538               | <b>KERMIT K. KISTLER</b><br>Lynnport, PA<br>215-298-2011                                | <b>MESSICK FARM EQUIP., INC.</b><br>Elizabethtown, PA<br>717-367-1319     | <b>RISHEL'S SALES &amp; SERVICE</b><br>Spring Mills, PA<br>814-422-8826<br>State College, PA<br>814-238-7788 | <b>C.J. WONSIDLER BROS.</b><br>Quakertown, PA<br>215-536-1935<br>215-536-7523<br>Rt. 309 & 100<br>New Tripoli, PA<br>215-767-7611 |
| <b>DOTTERER EQUIPMENT INC.</b><br>Mill Hall, PA<br>717-726-3471           | <b>C. B. HOOBER &amp; SON, INC.</b><br>Intercourse, PA<br>717-768-8231                | <b>LAMB'S FARM MACHINERY</b><br>Thorndale, PA<br>215-269-2676                           | <b>MIFFLINBURG FARM SUPPLY, INC.</b><br>Mifflinburg, PA<br>717-966-3114   | <b>MELVIN J. SHEFFER, INC.</b><br>Hanover, PA<br>717-637-3808  | <b>YORK CO. FARM IND., INC.</b><br>Emigsville, PA<br>717-764-6412   |
| <b>ERB &amp; HENRY EQUIP. INC.</b><br>New Berlinville, PA<br>215-367-2169 | <b>HUTTON FARM EQUIP.</b><br>Mahaffey, PA<br>814-277-5504                             | <b>LANCASTER FORD TRACTOR, INC.</b><br>Lancaster, PA<br>717-369-7063                    | <b>MORRIS INT'L., INC.</b><br>Everett, PA<br>814-652-6101                 | <b>SHUEY SALES &amp; SERVICE</b><br>Ono, PA<br>717-865-4915  | <b>ZIMMERMAN FARM SERVICE</b><br>Bethel, PA<br>717-933-4114   |
| <b>ARMERSVILLE EQUIPMENT, INC.</b><br>Ephrata, PA<br>717-354-4271         | <b>INCH EQUIPMENT CO.</b><br>McAllisterville, PA<br>717-463-2191                      | <b>LAWN CARE OF PA.</b><br>Martindale, PA<br>215-445-4541                               | <b>NICHOLS FARM EQUIP.</b><br>Bloomsburg, PA<br>717-784-7731              | <b>STRALEY FARM SUPPLY, INC.</b><br>Dover, PA<br>717-292-4443<br>717-292-2631                                |   |
| <b>N.H. FLICKER &amp; SONS, INC.</b><br>Maxatawney, PA<br>215-683-7252    |   | <b>S.G. LEWIS AND SON</b><br>West Grove, PA<br>215-869-9440<br>869-2214                 |   |  |   |