

RAINBOW FARMS DISPERSAL

RT. 96 CANDOR, NEW YORK
having decided to discontinue farming we
have been commissioned to sell on
SATURDAY, NOV. 29th, 1986

@ 11:00 A.M.

at the farm located 1 mile west of Candor
on Rte. 96 (Tioga County).

67 HEAD HI-GRADE HOLSTEIN CATTLE 67

47 mature cows in a good flow of milk, several
cows just fresh in last 60 days - Several due
Dec. & Jan. - A good milky set of cows with
youth - A.I. breeding - ready to go home and
produce for you - Discontinued DHI Testing
April 1986 Last rolling herd average 19312M
3.6% 694F.

12 larger Holstein heifers some bred and
showing, balance open 8 started calves.

Cattle 30 day Blood & T.B. tested - Ready for
Interstate - Vet. examined - Shot for shipping
fever - Catalogs at Ringside.

FARM MACHINERY: Farmall 706 diesel (nice
tractor); Badger 206 spreader; IH 990 mower-
cond.; NH 268 baler w/thrower; Minn Moline
Uni-system with picker-sheller-grain; JD 4 row
corn pltr.; crop sprayer; Oliver 4x16 trailer
plow; Oliver 4x14 trailer plow; 16' finish
harrow; Gehl Grinder Mixer; Gehl, IH, NH, &
Lamco silage wagons.

PRODUCE: 1500 bales 1st cutting; 2000 bales
2nd. cutting; 200 round bales (500-600 lbs.)
under cover; all nice, early cut hay, never been
rained on.

NOTE: No small items be on time - Produce
sold from sale ring.

TERMS: CASH OR GOOD CHECK

OWNERS

ERIC & TERESA HALSTEAD

HOWARD W. VISSCHER

SALES MANAGER & AUCTIONEER

NICHOLS, N.Y. 607-699-7250

LUNCH AVAILABLE

PUBLIC SALE

SAWMILL AND EQUIPMENT,
TOOLS, TRACTORS, FORD
PICKUP, BUTCHER TOOLS
SATURDAY, NOV. 29, 1986

at 10:00 A.M.

will be held on site, located midway
between Littlestown and Hanover, PA, on
Route No. 194. Then turn South unto
Pine Grove Road and go 4 miles to sale,
sale sign posted.

The Following:

Frick Sawmill with 3 Head blocks carriage
track and husk, two sawmill blades 52"-1
Diston, 1 Hoe; adjustable log boom, 3 pt., wood
saw mandrel, 420 crawler tractor with front
end loader, log fork, bucket, grader blade,
rippers, winch, Ford 8N tractor, grader blade,
front loader with log fork, bucket, manure fork,
2-4 cylinder Waukesha engs., 1-4 cylinder
Wisconsin eng. various size cut off saw blades,
lot of log chains 10' to 25' lengths, chain bind-
ers, cable, pulleys, belts, axes, wedges, pair
of highway pad track for crawler, 2 sheds, saw
mill buildings, Kant hooks, Ben Franklin stove,
pot belly stove, 4" jointer planer, Smoker
elevator 24'.

Truck

Ford 1962 pickup with 4 speed axel, good tire.

Butchering Equipment

3 cast iron kettles & stands, meat saw, meat ax,
lard press, hog & beef poles, ham, hog, & beef
hooks, pudden stirrer, scrapers, pudden pans,
latel, fork, strainer, many items not listed.

Note the above items mention are in good
operating condition.

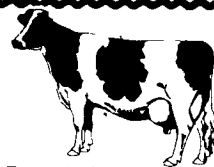
Terms: Cash, check only if known.

MAYNARD L. STEWART, Owner

Clair R. Slaybaugh auctioneer
Ph. 677-7479 PA Lic. #856-L

Dairy and Livestock Sales

NEW HOLLAND SALES STABLES, INC.



12 Miles East of Lancaster, Pa. just off Rt. 23, New Holland, PA

SPECIAL DAIRY SALE WEDNESDAY, NOVEMBER 26, 1986

12:00 Noon

SPECIAL HERD DISPERSAL FOR PAUL HEISLER FROM TAMAQUA, PA.

50 Head of Cows, all Sire Power Breeding.

20 Registered and the balance Grades.

All home raised. Rolling herd average 17,700 Milk, 621 Fat.

Several cows now milking over 80 lbs. per day. Some top animals
in this herd include 4 Spirit daughters, 4 Chairman daughters, 8
Jemini daughters and 5 Jet Stream daughters.

This herd is certified and accredited and most animals calffood
vaccinated. Vet checked for pregnancy. Milk weights will be
announced sale day.

This herd will be selling about 2:00 P.M.

NEW YORK STATE HERD OF 27 COWS

in all stages of production. This is a young herd with good udders.

Also 9 open heifers.

* 1 load Canadian Purebred and Grade cows consigned by Leroy
Smucker.

* 1 load Canadian heifers and cows consigned by Roy Johncox.

* 1 load fresh cows consigned by Norman and David Kolb.

For more information to buy or sell

Contact:

Abe Diffenbach
717-354-4341

or Norman Kolb
717-397-5538

WILLIAM J. & CHERYL SIMMONS

COMPLETE DISPERSAL

Berkshire, New York (Tioga Co.)

FRIDAY (day after Thanksgiving) NOVEMBER 28, 1986

10:30 A.M.

Sale on the farm on the Jewett Hill Road. Turn off Rt. 38 in
Berkshire to Jewett Hill Road, then go 1 1/2 miles to farm.
Berkshire is 17 miles north of Owego. Arrows off Rt. 38.

75- GOOD HOLSTEINS- 75

45 mature cows of which 12 are fresh; 11 handling or bagging; 7 due in
March; 6 due April thru June; 6 bred back for July. 7 are Reg. (4 Willows, 1
super 1st calf Triple Threat, etc.) 1 R & W cow. 11 big heifers (9 bred from 3
to 6 mos., 2 open); 10 yearlings; 9 heifers from started to 9 mos. old (3 R &
W hfrs.) You will find a nice uddered herd here that are really producing. A
real good dairy to buy replacements from. They have been pregnancy
examined, shot for Shipping Fever; Blood & TB tested and are eligible for
immediate interstate shipment day of sale. Herd is on DHIA OS. RHA -
15,800 M, 3.6% F

FARM MACHINERY

Oliver 1600 diesel WF Tractor, 3 pt, 18.4x38 Rubber; Belarus 520 4WD diesel
Tractor w/Cab, 13.6x38 Rubber; Int. 2606 gas Tractor w/Industrial Front
End Loader, 3 pt. hitch, PTO, 16.9x28 Rubber, a Dandy; Int. 990 Mower
Conditioner; 4 Umbrella Frandent Tedder, new this year; J.D. Side Rake;
Int. 47 Baler w/#10 Thrower for parts; 4 Kicker Wagons on gears; 30 ft.
Skeleton Elevator; (2) Hay & Grain Elevators; Oliver 545 4 Btm semi-
Mount 16" Plows; Pittsburgh 12' Transport Disks; Brillion Transport
Cultipactor, sharp & hard to find; Brillion 16 ft. Transport Harrow; (2)
N.H. 717 Choppers; (2) 1 Row Corn Heads; (1) 2 row 30" Corn Head; 1 Pick
up Head; Oliver 4 row Corn Planter; MF Self-Unloading Wagon; Badger 3
Btr w/Tandem Gears SU Wagon; Gravity Box on Gear; Int. PR1 Corn
Picker; Badger 54 Short Hopper Blower; J.D. Grain Drill, needs work; 3
pt. Eurospand Fertilizer Spreader; Dump Trailer on Wheels; J.D. #40
Manure Spreader w/End Gate; Crop Sprayer w/250 gal. fiberglass tank; 2
Round Bale feeders; 2 Gas Tanks (550 & 175 gal); 1958 Ford Truck w/hyd
grain body; other misc items commonly found around the farm.

MILKING & BARN EQUIPMENT

Nu-Pulse Pipeline Milking System, 2" w/2 lines, 4 units, 80 ft. of SS pipe
and Sta-Rite Milker Pump, 2 yrs old & a beauty; 80 gal. Electric Hot Water
Heater; 800 gal. Jamesway Bulk Tank; Cornell Barn Cleaner w/approx.
220 ft. of chain, runs clockwise; Clay double auger 14' Silo Unloader;
Farmec approx. 80 ft. Mow Conveyer; 25 Water Buckets; (2) metal Grain
Bins w/augers (6 ton & 18 ton); 2 Corn Cribs; 2 Barn Fans; etc.

P.S. - A real complete dispersal. Older but good usable equipment. A good
herd of cattle. Order of sale: 10:30-Misc; 11:00-Machinery; 12:00 Milking &
Barn Equip.; 12:30-Cattle.

This 190 acre farm is for sale by contacting Century 21 Real Estate,
Roxanne Simmons at 607-753-6774.

Terms- Cash or Good Checks w/Positive ID. Complete payment day of
sale.

Owners-

WILLIAM J. & CHERYL SIMMONS

MEL MANASSE

Sales Managers & Auctioneers

Whitney Point, New York

607-692-4540 or Toll Free NYS 1-800-MANASSE

Lunch Available

REAL CLEAN

FARM MACHINERY AUCTION

4 TRACTORS- SP COMBINE- GRAIN TRUCK

SATURDAY, NOVEMBER 29, 1986

at 11:30 A.M.

FOR VARGO BRC - PHILLIPSBURG, N.J., located on Rt. 22,
off of Rt. 78 from Still Valley Circle (1 mi. S. of Larry Holmes
Commodore Inn). 3 MI. EAST OF EASTON, PA.

11:30 A.M.- about 1/2 hr of small items!

12 NOON- 4 TRACTORS- JD #4430- DL- cab- air loaded- Real Clean,
JD #4230- DL- cab- air loaded- Clean, JD #4010- DL- 3 PT- PS, Ford
#4000 IND tractor w/Ford hyd loader- PS. MASSEY FERGUSON #510-
DL- SP- Combine- cab-air w/#44- 4R- WD corn hd and 13 ft. grain hd all
real Sharp (USED ONLY ON 600 ACRES). 1974- GMC #6500 dump
truck- 2 spd rear w/18 ft. Omaha standard grain body. TILLAGE- JD
#2600- 5 btm- 18" variable cut spring reset semi mtd plow w/hillside
hitch, White #508- 4btm- 18" spring reset semi mtd plow, JD #310- 14
ft. hyd disc, JD- 12 ft. hyd cultimulcher. PLANTERS- JD #7000-4 R maxi
merge corn planter w/auger fill & insect, IHC #510- dd- 18 hole grain
drill w/seeder, Stoltzfus 5 ton fert spreader w/SS pans- booms- 2 yr old,
300 gal trailer field sprayer. HAY EQUIP.- JD #1209-9 ft. haybine 2 yr
old, NH hay rake, JD #336 hay baler w/kicker, 4-16 ft. kicker hay
wagons on factory gear and A1, NI 36 ft. H & G elevator, 34 ft. H & G
elevator. Arts Way #425 grinder mixer. GRAIN EQUIP.- 2- MS- 15000
bu grain bins A-1, 30 ft. sweep auger. Superior 40 ft. port grain auger,
Brady #1440- 12 ft. PTO corn stalk shredder 2 yr old.

NOTE: The Vargo Bros. purchased a lot of this equip. new and kept it
under cover and in the best of condition! ALL OWNER OPERATED AND
IN SUPER SHARP SHAPE! No farmer can afford to miss this Sale! Plan
to Attend! Inspection 1 week prior! Lunch!

TERMS- OUT OF STATE BUYERS- Cash or Guaranteed Funds or
Current Bank Letter of Credit w/amount you can spend up to,
addressed to Vargo Bros. 201-454-3560 or 0878. Full Settlement Sale
Day!

SALE CONDUCTED BY:

COL. FRED R. DANIEL AUCTIONEERS INC.

Neshanic Sta., N.J. 201-369-4784

(A Full Service Auction Co.)