

Public Auction Register

Closing Date Monday 5:00 P.M.
of each week's publication

SAT. NOV. 29 - Smith Mead Holstein Sale, Frederick, MD.

SAT. NOV. 29 - 9:30AM Furniture, Antiques, Collectibles, Gruber Hay Wagon, 1930 Model A Ford PU Truck, Haag's Hotel, Eugene G. Klinger Auct. Serv.

SAT. NOV. 29 - 10AM Butcher Shop Eq., Griffith Smokehouse, Butcher Boy

Meat Saw, 2 Refrigerated Market Trucks, Car, 2 Snowmobiles, Motorcycle. Approx. 3 mis. W. of Leighton, approx. 9 mis. E. of Rt. 309 at S. Tamaqua, on Rt. 443, across from Mahoning Farmers Mkt., Carbon Co., PA. By: Neil G. Gilbert, Robert A. Arner, Auct.

SAT. NOV. 29 - 10AM Farm Eq., Trucks, Bldgs.,

Hay, HH, Antiques. Between Doylestown & New Hope, 2 mis. S. of Buckingham, along Rt. 413 toward Newton, Bucks Co., PA. By: Frank & Dorothy Clark, Ralph W. Zettlemoyer Auct. Co., Inc.

SAT. NOV. 29 - 10AM Real Estate: 2 Fine NJ Horse & Stock Farms, Late-Model Farm Implements. From Woodstown: E. on Rt. 40 approx. 2 mis. to Avis Mill Rd. & properties. From Walt Whitman or Commodore Barry Bridge: I-295 S. to Woodstown & proceed as above. Louis Traiman Auct. Co.

AUCTION SALE

GOOD TRUCKS-TRACTORS-BOAT-NICE COMBINE-LOADER-IMPLEMENTS-GRAIN TANKS

YOU DON'T WANT TO MISS THIS SALE. IT'S ALL IN GOOD SHAPE

Roscoe Bishop, Elwood Taylor and Larry Sterling have discontinued their separate farming operations, and have combined their equipment for one large sale.

SATURDAY, NOVEMBER 29, 1986

Beginning at 10:00 A.M.

Bishop Road, Pocomoke, Md.

(30 miles South of Salisbury, Maryland)

John Deere 6600 combine 1978, hydrostatic, rotating screen, only 1620 hours, w/216-16' flex head, ex. condition; John Deere 444, 4 row big auger corn head, very good; International 715 combine diesel w/16'6" grain table, very good condition; Michigan 55 loader w/continental gas engine; John Deere 4420, power shift, cab & air, only 1620 hours, dual remotes, 18.4x38 tires, 1977, ex. condition; John Deere 4020 side console, 18.4 x 34 tires, 3227 hours, single remote, very good; John Deere 4020, power shift, old style, new tires, ex. cond., totally rebuilt just 450 hours ago, 5,000 total tractor, very good; International 786, 1775 hours W TA, dual remotes, 16.9x38 tires, 1981, nice; International 1066 w/dual 20.8x38 tires, 3000 hours TA, dual remotes, dual PTO, very fine condition; Ford 5000, gas, power adjust wheels, uses 1 qt. oil every 3 days raking hay; Case 970, white paint, cab and air, 3597 hrs., 18.4x38 dual remotes, good; Case 970, white paint, 1920 hours, 18.4x38 new tires all way around; 19' Mantee Tri-Hull bow rider w/1983 200 hp Johnson motor w/power trim on Cox trailer, compass depth finder, garage kept, mint condition.

Trucks:

1978 GMC 7000 twin screw w/19' Meadows dump body, 427 engine in very good shape; 1975 Ford F-700 w/Meadows 16' dump body, 20,000 miles, 5x2 speed, 24,000 GVW, ex. cond.; 1972 GMC w/14' Snyder dump body, 26,000 miles, 4x2 speed, 24,000 GVW, new paint, ex. cond.; 1967 Chevrolet w/16' Russell body, 4x2 tires; 1966 International 1800 w/345 engine, only 500 miles on complete engine rebuilt, 5x2 trans., 15' body, real good; 1966 Chevrolet C-60 truck w/3 year old 15' Russell body, 4x2 speed; 1970 GMC 5500 V-6, 4x2 speed, 126,000 miles.

Grain Bins:

10,000 bu. Long grain bin w/false floor, gas heat, 8' bin sweep, in roof spreader, low unload auger 3 phase; 6,000 bu. Long grain bin w/false floor, gas heat, 6' bin sweep, spreader, single phase; 54' long 8' auger elevator on wheels, PTO; Roto Phase 20 hp from single to 3 phase; 12' out fill auger.

BINS SHALL BE REMOVED BY BUYER AFTER JANUARY 15, 1987

Planters and drills:

Kinze 11 row planter w/fertilizer & insecticide, 2 monitors, no-till coulters, ex. cond.; International 5100 grain drill, 21 spout, double disc openers & press wheels; International 6 row 295 new style planter, very good; John Deere 494 fertilizer & insecticide, very good condition.

Implements:

MF 520 disc 44 blade w/board, like brand new; Hardee offset mower hydraulic slide, ex.; J.D. 5x16 semi-mt plows; John Blue 500 ga. stainless sprayer w/dual piston pump & hydro agitator & fill tire to tire drive; Farm Hand 6 row 30" S tine hydro fold cult. w/rolling fender; J.D. 14" chisel plow, 1600 high clearance; New Holland 451, 3 pt. 7' mower, new style; 1000 Gal. stainless steel tank; J.D. BWA 36 blade disc, new 22" blade; J.D. 12" chisel plow, high clearance; 4 row Ferguson cultivator; 2-4 wheel funnel wagon; New Holland funnel wagon; 4 wheel heavy duty wagon; Pick up fuel tank; Gear head motor; Gilmore rotating screen grain head; 3 phase 3 hp motor; J.D. 14T bailer, works great; 14' solid wheel packer w/transport wheels; Agro-Tec 300 gal. horizontal tank sprayer; J.D. 3x16 plows; New Idea 7' crumpler w/rubber rolls; Van Brunt 13 spout drill; Super Rhino 7' grader blade; 2-100 gal. John Blue side mt. sprayer - rebuilt 4000 pump; 6' heavy duty bushhog; Case 44 blade 7 1/2" space disc, very good; Brillion 16' packer w/hydro lift; Woods mechanical offset, good; Ferguson 9' 2 bar chisel plow; 6' leveling pan - rusty but not worn; Brillion 14' field cultivator w/Mid-West rake; Farm Hand 6 row S tine cultivator; 2 - 100 gal. pick up fuel tanks w/12V pump; Coats 10-10 air tire change; Victor torch set; Plastic plates for Int. & J.D. plows; 5 - A type hog houses; 100 fence posts; Several sets of duals; More than enough.

Inspection: All equipment will be on yard by November 25th. Inspection Thanksgiving Day, November 27th, from 9 AM until 4 PM.

Directions: From Salisbury, Md. and points North take US. Rt. 13 South 30 miles to Pocomoke, turn right beside Hardees, go 2 miles to stop sign, turn left, go 1.9 miles, turn right on Bishop Road, bear right at Y, go until road ends 1/2 miles up lane.

Terms: Cash Or Good check on day of sale.

**ROSCOE BISHOP
ELWOOD TAYLOR
LARRY STERLING,**
Owners

Pete Richardson Auction Sales
P.O. Box 51, Willards, Md. 21874
Phones: (301) 546-2425 Office
(301) 742-6220 Home

Dairy and Livestock Sales

PUBLIC AUCTION

**28 M/L Acre Farm
Farm Machinery, Household Goods
SATURDAY, DEC. 20, 1986**

Sale Time 10 A.M.
Real Estate 1 P.M.

LOCATED: Take Rt. 272 So. of Lancaster, Pa. approx. 11 miles, turn East on Schoolhouse Rd., to Cinder Rd., turn left continuing back on Schoolhouse Rd. Or take Rt. 222 So. of Lancaster through New Providence, turn right on Cinder Rd., turn left on Fairview Church Rd., turn right on Schoolhouse Rd. Prov. Twp., Lanc. Co.

Property consists of a 2 1/2 story, 6 room frame house; 2 story frame barn w/adjacent implement shed, silo, pig pens & corn cribs; Approx. 25 acres of good tillable soil; Road frontage along Schoolhouse Rd. & Fairview Church Rd.

-OPEN HOUSE-

NOVEMBER 29th & DEC. 6th
from 1 p.m. to 4 p.m.

Terms By
ELWOOD & BERTHA E. EVANS

Aucts.: Kreider, Kline & Good
AU000513L 786-3394



R D 1 BOX 277 NEW PROVIDENCE, PA 17560

PUBLIC AUCTION

New & Used Farm Eq.

The undersigned will sell the following equipment on the premises of Ag Industrial Equipment Co., Inc., 1207 Telegraph Road, Rt. 273, East of Rising Sun, Maryland.

MONDAY, NOV. 24, 1986

10 a.m. Sharp
FARM MACHINERY

White 2-180 tractor; MF 165 tractor; AC D17 NF tractor; JD 2240 tractor; JD 2840 tractor; Case 750 power tilt dozer; AC 5040 tractor w/loader; Deutz 1006 tractor w/cab; JD 16A flail chopper; IH 650 chopper w/2R corn head and WPU; NH 718 harvester w/2RN; NH 55 rake; Farmhand wheel rake; Oliver 207 rake; Deutz Fahr 4 rotary tedder; New NH 256 rake; IH 440 baler w/o thrower; bale rack w/running gear; NH 1469 SP haybine; NI 279 cutditcher; NH 489 haybine; Pequea 9' hay tedder; NH 851 round baler; (3) bale wagons w/JD gear; NH L35 skid loader; JD 4R corn planter; JD grain drill (13 disk); mounted cultivator for Farmall H; Hub 48' elevator; Lilliston 7'6" mower; JD 335 sprayer for pickup truck; new 5' sickle bar mower; Brillion 7 shank soil saver; Hawk 5' rotary mower; Crouse 20' disk; AC 2300 disk; AC 10 shank chisel plow, PT; 6 & 7' 3 pt. blades; IH 10' offset disk; NI 325 narrow picker; Shaver post driver; NI 245 manure spreader w/gate; AC M2 combine w/12' flex head and 6RN corn head; 2 bottom 3 pt. plow; used tractor weights and tractor tires.

ABSOLUTE AUCTION OF FOLLOWING EQUIPMENT FROM FARM HOME ADMINISTRATION

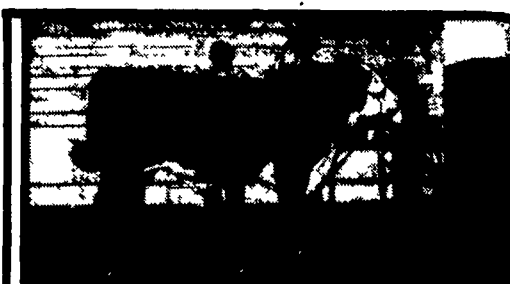
AC 7000 dsl. tractor; Ford 8000 tractor; AC 333 corn planter, 6R; gravity flow grain wagon; Ford pickup truck, 3/4 ton; JD 4R corn head; IH disk; Brillion chisel plow; Crustbuster disk; Int. grain drill; JD 6R corn head, 15' bean head.

TERMS: Cash. Checks will be accepted with current letter of credit and proper identification.

For information, call:
AG INDUSTRIAL EQUIPMENT
Rising Sun, MD.
301-658-5568
301-398-6132
215-869-3542

Not responsible for accidents day of sale.
Food Available

Aberdeen Sales
Sale Managers and Auctioneers
P.O. Box C
Aberdeen, MD 21001
301-836-7590
Nights 301-734-7105



Polled Hereford Calf Sale

DECEMBER 6 - 1:00 P.M.

at Falklands Farm

on U.S. Hwy 30, 2 miles west of Schellsburg, PA or 10 miles west of Bedford, PA.

32 steers and 14 heifers suitable for 4-H or FFA projects in 1987

Contact for catalog or further information

FALKLANDS FARM

RD 1, Schellsburg, PA 15559

(814) 733-2818, Paul Slayton - Manager

PUBLIC SALE

**OF ANTIQUES, GLASSWARE,
CHINA & COLLECTIBLES**

BRICKERVILLE FIRE HALL

Thanksgiving Day

THURS., NOV. 27, 1986

9 A.M.

Sale to be held at Brickerville Fire Hall located just off Rt. 322, Village of Brickerville, (approx. 8 miles west of Ephrata) Lancaster Co., Pa.

Hoosier Type Kitchen Cabinet; Victorian Walnut Cupboard; Walnut Pie Safe; Victorian Sofa; VICTORIAN WICKER BABY BUGGY (Parasol); Shoe-Shine Box; Wicker Rocker; Round Table; Carved Chairs; Mahogany Table; Gate Leg Table; Brown's Seed Cabinet; Apothecary Cabinet; Shaving Dresser; Nursing Rockers; Oak Table; Oak Desk Chair; Brass Hanging Light; Bedroom Suite; "Civil War Discharge"; Post Cards; Bobsey Twins Children's Books; Mantel Clock; Antique National Cash Register (Brass).

COLLECTION OF CAMPAIGN & ADVERTISING BUTTONS, Lincoln, Roosevelt, Etc.; Howdy Doody Buttons; Geo. Washington & Lincoln Pictures; Indian Pictures; Chandler, Etc.; Buttons; Antique Christmas Decorations.

China

"IVY" IRONSTONE; Royal "Bayreuth" Bavaria; Early Adams; Majolica; CARNIVAL GLASS - "N" Water Set, "Good Luck", Vases, Hat Pin Holder, Footed Bowls, Pitchers; Pink Carnival Swans; Fostoria Glass; Pennsbury Pottery, Weller & Roseville.

PRESSED & PATTERNED GLASS - "Cupid & Venus", "Chain", "Chain & Star", "Bull's Eye & Fan"; Lead Crystal Water Set; Schrafft's Candy Dishes; Pr. Sm. Kerosene Lamps; 1980 Hummel, Glass & Wedgewood.

COLLECTOR PLATES - 1975 Hummel; Royal Copenhagen Xmas; Mother's Day; 197 Omnibus Muralis; Avon (all types); B.&G.; Goebel; Imperial; Jade Wedgewood; Gregory Perillo; Stumar; Pennsbury, Etc.; Goebel "Nasha" Boy & Girl; Tea Set; COLLECTION MILK BOTTLES (qts., pints, 1/2 pints) - White Cross, Eph.; Sheeler, Stevens, Elverson, Lanc., Blue Ball; Miley, Eph.; Chambersburg, Shippensburg, Etc.

SODA BOTTLES, Leber, Kiehl & Keefer; WATER BOTTLES, Frata Mt. Hope, etc.; Glass Candy Containers (toy); Old Jelly Glasses; Jugs (Brown, Jugtown, etc.); Demuth Snuff Jar; Stoneware; Butter Crocks; Crocks.

COLLECTION AGATE - (Approx. 50 pcs.), Tinware; COPPER Teakettle, Pitchers, Cream & Sugar & Serving Pcs.; Griswold Meat Grinder.

COLLECTION BEADED PURSES; Silk Parasol; Antique Wedding Gown & Period Clothing; Costume Jewelry; Sterling; Gold Mountings; Rings (Diamond etc.); DOLLS (approx. 5); Sled; Cast Iron Car; Child's Sadirons; Marbles (Earthen & Glass); Tin Train (original box); "Mickey Mouse" Spoon & Ring.

Oak Machinist Chest; 2 Commemorative Winchester Model 94 "Buffalo Bill" (20" & 26"); LANTERN COLLECTION - Reading & Otehr R.R., Civil War, Carriage, Dietz, Etc.

Terms by
CAMP, LUCILLE, VERONIA & DENNIS CRAIG

T. Glenn Horst, Auct.
717-859-1331 - AU000438L
Timothy G. Horst, Auct.
717-738-1245 - AU001767L

No Out-of-State Checks