

35 TRUCKS AND TRAILERS

11' Dump body with hoist, 20' Omaha standard grain body with hoist, 40 ton truck hoist, complete New-way lift axle. 814-793-2339.

1963 Int. tractor, 220 Cummins diesel, 22" rubber, \$1,700. O.B.O. 412-727-3168

1968 Int. 220 single axle tractor, 549 V8, 8SP roadranger, 10:00x20 radials, 85%, wetline. 33' Fruehauf flat trailer, sides, bows, tarp. 301-343-1684 after 6PM.

1971 FORD TANDEM: LPS900 cab & chassis, double frame, 391 Ford gas engine, 155P trans., air brakes, P. steering. Will take up to 24' body. Truck & engine in excellent condition. 201-534-2570 after 7PM.

1973 American 45' livestock trailer, possum belly, good condition. 609-667-7632 after 5PM.

1973 C-60 Chevy truck, 18' aluminum box body converted to 6 horse van. Sell with or without body. 301-692-9626.

1973 Diamond Reo dump truck, 270 Cummins dsl. engine w/10SP Road Ranger trans., 20 ton capacity dump bed, inspected and ready for the road 717-259-7262

1975 Ford 9000 diesel, cab & chassis, 35,000 GVW, Cat. diesel. \$8500
1978 Ford 900 tandem, cab & chassis, gas, \$10,000. 1978 GMC tandem dump, gas, \$10,000 1977 Ford 900 tandem dump, gas, \$12,500. 6x6 Army truck, 10.00x20 tires, \$2,000 Cat. 955-H Crawler Loader, \$15,000. IH 250 Crawler Loader, 4-in-1-bucket, \$11,500 Many others. Curry Supply Co., Curryville, PA 814-793-2829.

USED TRUCKS



'85 Ford F250 Heavy Duty XLT Super Cab, 6.9 Diesel, AT, PS, PB, Air, Cruise, Tilt Wheel, Captain Chairs, 21,000 Mi., 2 Tone Paint, Utility Body **\$13,500**

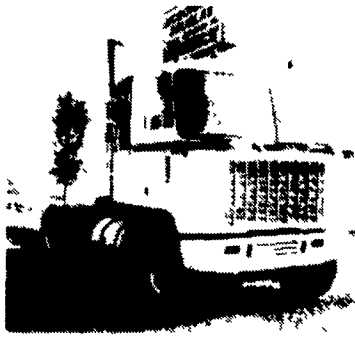


'85 Ford F-350 Dual Wheels, 10 Ft. Stake Bed w/Dump, 351 V-8 4 Spd., PS, PB, AC, 22,000 Miles. **\$12,700**

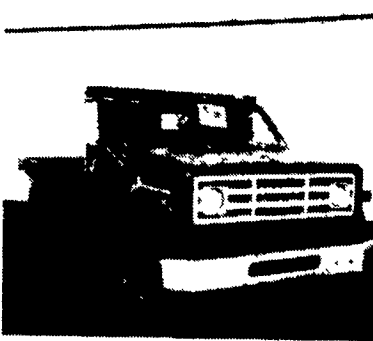
MARTIN'S AUTO SALES

725 E. Main St., New Holland, PA 17557
(717) 354-9967

Special: 1980 GMC, Gas 6 Cyl., PS, 14' Van Body **\$2,300**



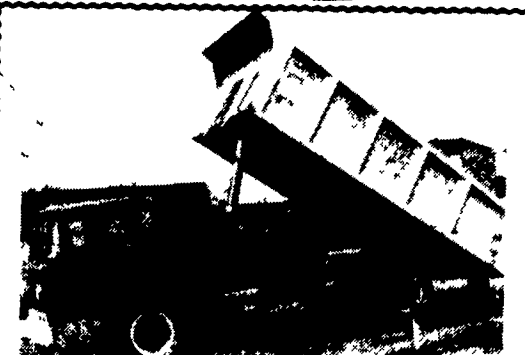
1982 GMC Astro Glider Kit, Tads, 8V92TTA, 9 Spd., 10x20 P/S, A/C **Reduced \$20,000⁰⁰**



80 GMC, Gas, 366 GM, 5 Spd., 10x20, P/S, 16' Flatbed w/Dump Hoist **Reduced \$5,900**

MCDONNELL DOUGLAS TRUCK SERVICE, INC.

A Full Service Lease Company
717-569-2648



16 foot aluminum Raven bed; Ford 1970 cab-over truck; new engine. **\$4,000.00**
703/382-3071

1981, 23' Eby Custom Built Aluminum Cattle Body Mounted on 1981 Int. 1854

With DT466, 210HP dsl., 5SP trans., 2SP 23,000 lb. rear, air brakes, custom cab with air driver's seat. Less than 150,000 miles all by same driver. All maintenance records available. Excellent condition. Would sell body separately. Asking \$25,000 complete or \$7,500 for body.

BARMANN'S
Rt. 6, Middletown, NY.
Call Dave **914-343-6875**
or **342-3344** nights

NEED CASH? We buy unwanted trucks and parts, scrap aluminum of any kind Wrecked dumps, vans, flats, tank trailers, etc. Call 215-944-9871.

Detroit Diesel Engine, (complete as is), model 8V92TA, 440 h.p., \$2,000. 717-235-2924
FOR SALE: 1974 Fruehauf van 45', 13'6" slider 1000x20 tires, \$5,000. 716-293-3701.

'82 Ford F150 XLT Lariat Super cab pickup, 6' bed, 302 auto., PB, PS, PW, PDL, cruise, tilt, air, AM-FM, dual tanks, 46,000 miles, blue & silver, excellent condition, \$6,450. 717-733-2873

"CLEAN FLOW" Stakeless Bodies by OMAHA STANDARD



- 52" or 60" heavy gauge sides give you more hauling capacity for grain, sugar beets and other commodities.
- "Clean Flow" design of the extra deep 30° sidewall corrugations allows complete emptying with no sharp corners for grain to hang up
- Greater inside width and length make this an ideal body for hauling bagged or palletized products
- Standard three section full opening rear doors.
- Complete your "Grain Power" package with an Omaha Standard work-proven hoist. Choose from the most complete line of scissor or stabilized "Olympic" telescopic hoists
- Compare any of Omaha Standard's full line of steel, aluminum or wood grain bodies and rugged hoists... you'll know why Omaha Standard is the most respected name at work on the farm today.

Available at:
FARMERSVILLE EQUIPMENT INC.
RD 4, East Farmersville Road
Ephrata, PA 17522
Located in the Village of Farmersville, Lancaster County
717-354-2150

Omaha Standard

DON'T LET THIS SMALL AD FOOL YOU! THE WHOLE SHOW IS IN OUR FREE CATALOG. CALL OR WRITE US, NOW!!!

DON'T LET OUR LOW PRICES FOOL YOU ALL PRODUCTS ARE NEW & GUARANTEED

CAR - HOME - PORTABLE STEREO - CB'S - RADAR DETECTORS

PIONEER KE8181
ONLY **\$28⁹⁵**
DON'T BE FOOLED Even Our Basic AM/FM In Dash Cassette Players Are New (No Rebuilds) and Use the Advanced Bar Type Tuner
w/Auto Reverse **\$4⁹⁵**
w/Built In Equalizer **\$7⁹⁵**
MANY MORE STYLES TO CHOOSE FROM!
• New For 1986 w/Dolby HR BC
• Fully illuminated Faceplate 18 Chan. Preset
• Super Tuner III w/Digital Freq. Check
• Scan Feature & Much More **\$229**

6x9 300W 3 WAY **\$16⁹⁵** 5 WAY **\$19⁹⁵**
ELECTRONICALLY TUNED AM/FM/MPX RADIO AND AUTO REVERSE STEREO CASSETTE PLAYER WITH 5 BAND GRAPHIC EQUALIZER & CHANNEL PRESET & SCAN
\$159⁹⁵
DON'T FORGET OUR LOW PRICES ON PIONEER, JENSEN & CLARION CAR STEREO

MUCH MORE AVAILABLE
OVER 70 DIFFERENT CAR STEREO COMPONENTS IN STOCK TO CHOOSE FROM!!
EQUALIZER BOOSTERS
7 Band 250W **\$29⁹⁵**
10 Band 250W **\$39⁹⁵**
HOME STEREO SPEAKERS
• JVC TYPE 200 Watt 4 Way Each With Removable Black Cloth Face Covers and Woodgrain Cabinet Finish Cabinet Measures 26 In High x 15 In Wide x 10 In Deep Quick Connect Push Button Wire Connectors On Back PAIR \$139
• PIONEER TYPE 400 Watt 7 Way Each Otherwise Same As Above PAIR \$169

TOOLS & EQUIPMENT

Mobile Crane
No. CAP 4000 lb \$349
AK960 6000 lb \$899
S160001 8000 lb \$1199
S180001

*** SANDBLASTERS ***
MODEL 100 PICTURED
Our heavy duty Blaster model is sized to fit most larger jobs. It's larger capacity allows you the flexibility to handle all types of jobs.
THIS UNIT FEATURES 10 ft. of sandblast hose
• Holds 100 lbs of No. 1 or No. 2 silica sand or any dry sifted abrasives • 6 ceramic tips (2 ea. 3/32 1/8 5/32) • Deluxe hood and funnel • 6 in. wheels for easy mobility • Moisture separator pressure gauge and conventional gun valve
• Working pressure 40 to 150 P.S.I. using 7 cu. ft. or air per minute at 80 P.S.I.
#100 \$249 #70 \$199 #40 \$139
All Models Are Pressure Type

PERFORMANCE & 4x4 PARTS & ACCESSORIES

4 In LIFT
INCLUDES ALL HARDWARE & SHOCKS
• 73 80 Chev Blazer 1 Ton Pickup Suburban 4x4
\$369⁰⁰
ALL POPULAR MODELS AVAILABLE

AIR COMPRESSORS

• 5 HP 60 Gal Vert Tank Light Industrial Duty Single Stage U.S. Made
ONLY **\$599**
• 5 HP 60 Gal Vert Tank Med. Industrial Two Stage Pump 175 P.S.I. U.S. Made
ONLY **\$799**
• The King 5 HP Full Industrial 80 Gal Vert Two Stage 775 R.P.M. Pump All Cast Iron Cyls. With Magnetic Starter All Tanks A.S.M.E. Coded Tr. S. Is Not A.M. Sprint
ONLY **\$999**

AUTOBODY PARTS PAINTS & SUPPLIES

CHECK OUR LOW PRICE ON "1st LINE NEW" PARTS
FENDERS 73 80 Chev Tk 73 79 Ford Tk 72 85 Datsun Tk 72 83 Toyota Tk 77 82 Courier Tk 76 82 Chevette Choice \$39 95 each
DOORS 73 85 Chev Tk Choice \$89 95 each
STEEL PATCH PANELS

Silver Beauty
MIG WELDERS
115 Volt/220 Volt
Call For Details Starting At **\$299**

TOOL SHED OF AMERICA

DEPT. 002, 4294 EAST HARRISBURG PIKE
MIDDLETOWN, PA 17057
(717) 944-0318

DIRECTIONS TO OUR NEW LOCATION Go East from Middletown Square on Main St. (Rt. 230) 4 miles on right or take Exit Rt. 230 & 341 off of Rt. 283 between Harrisburg & Lancaster & go East on 230 1 1/2 miles on right (we're about 20 minutes from Harrisburg)
HOURS Mon Thurs 9-5 Fri 9-9 Sat 9-5 Sun 11-4