

New Wilmington Hay

New Wilmington, PA
Friday, Nov. 7
Report supplied by Auction
34 loads hay.
Alfalfa 77.50-90.00, few to 147.50;
Mixed Hay 60.00-78.00; Timothy
46.00 (1 load); Clover 70.00-75.00;
Straw 50.00-56.00; Ear Corn 57.00-
62.00, 1 at 49.00; Oats \$.90-
\$1.05/bu.; Wheat (1 lot) \$1.75/bu.;
Barley (1 lot) \$1.37/bu.

Belleville Hay

Belleville, PA
Wednesday, Nov. 12
Report supplied by Auction
21 loads Hay. Alfalfa, 75.00-
130.00; Timothy, 77.50-85.00; Mixed
Hay, 85.00-100.00; 8 loads Straw,
60.00-82.50.

Good's Hay

Leola, Pa.
Wednesday, Nov. 12, 1986
Report Supplied by Auction
76 loads.
Alfalfa, 99.00-155.00; Timothy,
118.00-160.00; Mixed Hay, 80.00-
157.00; Straw, 89.00-125.00; Old
Corn, 57.00-75.00; New Corn, 51.00-
60.00; Stubble Hay, 105.00;
Meadow Grass, 107.00.

Chambersburg Hay

Chambersburg, PA
Thursday, Nov. 13
Report Supplied by Auction
10 loads Hay. Alfalfa, 1 at 126.00;
Mixed Hay, 9 at 83.00-122.00.

Keister's Hay

Middleburg, PA
Tuesday, Nov. 11
Report supplied by auction
14 loads Hay, Alfalfa, 100.00-
110.00; Mixed Hay, 75.00-102.50;
Timothy, 130.00; 2 loads Straw,
80.00-112.50; 2 loads Ear Corn,
57.00-65.00; Oats, 1.45 bu.; 6 loads
Fireplace Wood, 26.00-43.00 load.

Dewart Hay

Dewart, PA
Monday, Nov. 10
Report Supplied by Auction
16 loads Hay, 44.00-86.00; 3 loads
Straw, 66.00-73.00; 6 loads Wood,
36.00-46.00.

Leesburg Hay

Leesburg, Va.
Wednesday, Nov. 12, 1986
Strong market.
Timothy 119.00-186.00.

Leinbach's Hay

Shippensburg, PA
Nov. 7 and 11, 1986
Report supplied by Auction
16 loads.
Alfalfa, 96.00-111.00; Mixed Hay,
66.00-104.00; Timothy, 91.00-108.00;
Straw, 85.00; Firewood, 25.00-36.00
per load.

Frederick Co. Hay

Buckeystown, Md.
Thursday, Nov. 13, 1986
Report Supplied by Auction
44 loads.
Market steady to stronger on all
grades of Hay; steady to a little
weaker on Straw.
Alfalfa, 10 fair to good, 127.00-
159.00; Alfalfa Mix, 3 mostly good,
111.00-130.00; Timothy, 9 fair to
good, some fancy, 120.00-140.00;
Mixed Hay, 4 fair to good, 100.00-
140.00; 1 dark, 88.00.
Clover Hay, 122.50; Brome
Grass, 126.00; Grass Hay, 111.00;
Straw, 8 loads Wheat, 75.00-101.00;
Oat Straw, 88.00; Hard Firewood,
3 at 76.00-85.00 cord.
No Sale Thanksgiving Day.

Central U.S. Carlot

Beef Report
Wednesday, Nov. 12
Report supplied by USDA
Compared to Tuesday's 3:00
P.M. report, choice 3 steer and
heifer carcasses not established
except 550-800 lb. heifer steady.
Choice 4 1.00 higher than last test.
Good carcasses 1.00-3.00 lower
than last test. Holstein-type steer
steady. Demand generally light,
movement slow to moderate on
moderate supplies.

8 loads of steer carcasses and 3
loads of heifer carcasses traded to
packer-processors.
Sales reported on 74 loads of
steer and heifer carcasses.

Steer Carcasses:
(24 Loads Reported)
FOB Omaha Basis
Choice 3
600-900 lbs. latest estb. mkt. 95.00

A. Choice 2
600-700 lbs. 4 lds. range 94.50,
latest estb. mkt. 94.50.

Choice 4
600-900 lbs. 2 lds. range 84.00-
85.00, latest estb. mkt. 84.00-85.00.

Good 1-3
600-900 lbs. 2 lds. range 86.00,
latest estb. mkt. 86.00.

600-700 lbs. 8 lds. range 87.50,
latest estb. mkt. 87.50.

Holstein Type-
Choice 1-3
600-900 lbs. 5 lds. range 87.50,
latest est. mkt. 87.50.

Good 1-3
600-900 lbs. 3 lds. range 81.50,
latest est. mkt. 81.50.

Heifer Carcasses
(27 Loads Reported)
FOB Omaha Basis
Choice 3

550-800 lbs. 7 lds. range 94.00,
latest estb. mkt. 94.00.

500-550 lbs. latest estb. mkt. 91.00

C. 400-500 lbs. latest estb. mkt. 90.00

C. Choice 2
600-700 lbs. 9 lds. range 93.50,
latest est. mkt. 93.50.

Choice 4
500-800 lbs. 3 lds. range 84.00-
85.00, latest est. mkt. 84.00-85.00.

Good 1-3
550-700 lbs. 3 lds. range 85.00,
latest estb. mkt. 85.00.

600-700 lbs. 4 lds. range 86.50,

latest estb. mkt. 86.50.
400-550 lbs. 1 ld. range 79.00,
latest estb. mkt. 79.00.

Steer Carcasses
FOB Amarillo Basis
(11 Loads Reported)
Choice 4
600-900 lbs. 11 lds. range 84.50-
85.00, latest estb. mkt. 85.00.

Heifer Carcasses
FOB Amarillo Basis
(12 Loads Reported)
Choice 4
500-800 lbs. 12 lds. range 84.50-
85.00, latest estb. mkt. 85.00.

Cow and Bull Carcasses
(20 Loads Reported)
Midwest: Cow carcasses steady
to 1.00 higher.

Sales in the Midwest
Production Area
Util, Brkg 2-4 450/Up# 59.00-60.00

C. Util, Bng 1-3 400/Up# 2 lds. 64.00-
65.00.

Util, Bng 1-3 500/Up# 11 lds.
66.50-67.00.

Cutter Bng 1-2 350/Up# 3 lds.
71.00.

Cutter Bng 1-2 400/Up# 4 lds.
72.00.

Bull 1-2 500/Up# 73.00-74.00 E.
Bull 1-2 600/Up# 76.00 A.

Sales in Eastern Texas and
Oklahoma Production Areas:
FOB Plant
Util, Brkg 2-4 450/Up# 61.00 E.

Util, Bng 1-3 400/Up# 64.00-65.00

D. Cutter Bng 1-2 350/Up# 69.00-
70.00 D.

Bull Bng 1-2 600/Up# 75.50-76.00

E. **Boneless Processing Beef**
Beef Trimmings
(136 Lds. Reported)
FOB Omaha Basis

90% Chem Lean 25 lds. fresh
95.00-96.00, frozen 94.00-96.00 D.

85% Chem Lean 5 lds. fresh 90.00.
75% Chem Lean 6 lds. fresh 78.00-
79.00.

65% Chem Lean fresh 69.00 A.
50% Chem Lean 62 lds. fresh
56.00-59.00, M 58, 11 lds. frozen
60.00-61.50.

50% Chem Lean 3 lds. fresh 58.00-
60.00 boxed.

Eastern Texas/Oklahoma
Production Areas-FOB Plant
90% Chem Lean 19 lds. fresh
98.50-99.50, M 99, 5 lds. frozen
100.00.

85% Chem Lean fresh 87.00 E.

LIVESTOCK HAULING

Dependable Service
6 Possum Bottom Tractors
and Trailers
Call Anytime

Vintage Sales Stables, Inc.
L. Robert Frame Manager

Office **717-442-4181**
Office & Home: **215-458-5060**
Office & Home: **215-458-8518**

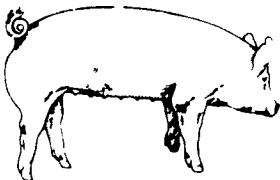
SPECIAL NOTICE!

Vintage Sales Stables, Inc.
(Rt. 30, 10 miles East of Lancaster
in Paradise, PA)

HAY, STRAW AND GRAIN SALE

Every Thursday at 1 p.m.
Beginning Thursday, December 4, 1986

For info 717-442-4181 L. Robert Frame, Sr.,
215-458-8518 President
717-442-4294 Glenn S. Frame,
Manager



**EMERY'S
BUYING
STATION**

**OPEN TO RECEIVE
YOUR MARKET HOGS**

AT THE GREEN DRAGON MARKET
RD 4, EPHRATA, PA 17522
1 MILE NORTH OF EPHRATA
ON NORTH STATE STREET.

HOURS: MONDAY, TUESDAY, and
WEDNESDAY 6:00 A.M. to 11:30 A.M.
215-458-5677 Residence
717-733-9648 Office

**YOU ARE PAID FOR YOUR
HOGS IMMEDIATELY**

Ken & Lois Emery, Proprietors

**CRIPPLED AND
DISABLED**

**Cows, Steers & Bulls
For Slaughter Under
USDA Inspection**

Call Wayne Taylor
717-866-6289
215-286-9400
Lebanon, Berks,
Lancaster & Chester
Counties

**PENNSYLVANIA
TOBACCO
AUCTION, INC.**

SUPPORT
THE
AUCTION

FIRST SALE:
DEC. 8
9:30 A.M.

PA Tobacco Auction will hold the first tobacco
auction of the '86-'87 season on **Monday, December
8, 9:30 a.m. in Intercourse.** We look forward to
serving the farming community this year and an-
ticipate another successful season. We sincerely
hope the farmers will again support the auction way
to market their tobacco. We remind you that YOU
are the ones that make this system a success.

PTA has hired Ron Ray, warehouse mgr., Al
Whitfield, auctioneer and Jim Lowe, ticket marker.
Together these gentlemen have 50 years of ex-
perience in tobacco business. They will use their ex-
pert experience to obtain the best possible prices
for your tobacco. Mitch White, the Field Rep has
been named assistant warehouse mgr.

A few changes have been made at PTA this year. We
would like you to call to schedule tobacco but it is
not necessary. Due to changes made at the
receiving doors, tobacco will move faster than last
year thus eliminating the long lines. We will receive
6 days a week. The office is now open Mon.-Fri. 1 to
4 p.m. Please call if you have any questions con-
cerning your tobacco.

SUPPORT YOUR AUCTION SYSTEM!

PO Box 57
Gordonville, PA 17529

(717) 768-7100

**ATTENTION TOBACCO
FARMERS**

Auction makes the difference in marketing your tobacco, and
Garden Spot makes the difference in auctions!

New, heated warehouse located in Earland Industrial Park
along Rt. 23 between New Holland and Blue Ball.

Receiving tobacco beginning December 4.

"THE NEW CHOICE"



**GARDEN SPOT
TOBACCO AUCTION**

P.O. Box 190
Blue Ball, PA 17506

717-354-6934