

# York County Farm Women

(Continued from Page B18)

sylvania-produced commodities. Winners whose projects will compete at the state level are Kathy Ehrhart, Group 9, Mary Carman, Group 11, and Malinda Stein, Group 25.

In her county president's report, Ruth Santiago honored new 80-year-old members Armanda Gingrich, Iona Krone, Aileen Carman and Margaret Johnson, and new 90-year-olds Esta Douglas, Mabel Bentzel and Anna Shue.

Nine deceased Farm Women members were remembered during a special memorial service. Honored in memory were Verna March, Group 4; Kathryn Hoover, Group 7; Annie Warner, Group 12;

Clara Sumpman, Group 13; Rebecca Wileman, Group 14; Minerva March, Group 15; Salome Glenn, Group 21; and Alberta Bupp, Group 27.

Susan Lehman presented the combined county group reports, reflecting a total of \$6,153.80 given by the societies. Donations to various needs ranged from individual losses through fire, organ transplant funds, an exam and eyeglasses for a youth, and numerous community, church and charitable organizations. Nineteen new members joined the 35 active societies, bringing total membership in York County to 595.

State president Naomi Bupp briefed the Farm Women on upcoming state activities, including

the 1987 annual convention, scheduled for January 12 and 13 in Harrisburg. Featured speaker will be JoAnn Hershey of Lancaster.

The 1987 Spring Rally will be hosted by Lancaster County Farm Women on May 20, at Elizabethtown College. A host county is still needed for the 1988 Spring Rally. Somerset County will host the 1989 Spring Rally, a celebration of the 75th anniversary of the Pennsylvania Society of Farm Women, in the county where the organization was founded.

Also on schedule for 1987 is a new activity for the state Farm Women, sponsorship of a tour to Australia, Oct. 1 through 23. Hosts for the tour are former state Farm Women president Lois Erb and her husband, Wilbur, who lived in Australia for a few years. Since the tour is limited to 30 people, and

already partially booked, interested members are urged to contact their state officers as soon as possible.

## Hudson Wins Grange Scholarship

NEWARK, Del. — Harry T. Hudson III, a senior majoring in entomology and plant pathology at the University of Delaware College of Agricultural Sciences, has been awarded the Delaware State Grange Scholarship for 1986.

Hudson, the son of Mr. and Mrs. Harry T. Hudson II of Lincoln, Del., received the \$500 award on the basis of his grade point average and faculty recommendations. Recipients of the Grange scholarship must be upperclassmen and Delaware residents.

Hudson is president of the Farmhouse-College Towne, a part of special interest university housing.

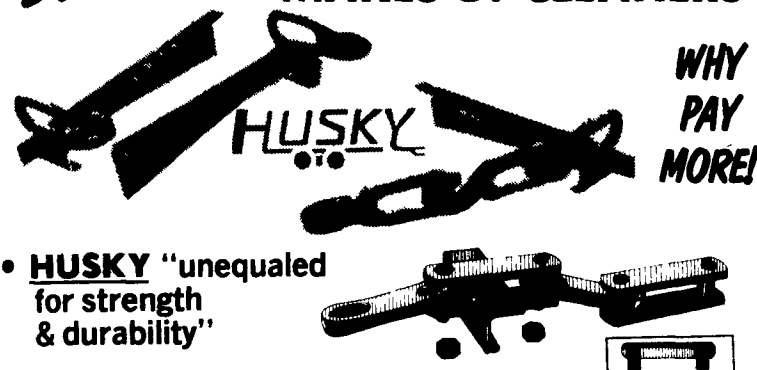


Harry Hudson III

Call Us For An Estimate Today!

### REPLACEMENT CHAIN & PARTS FOR ALMOST ALL MAKES OF CLEANERS

10-Year Warranty



WHY PAY MORE!

HUSKY "unequaled for strength & durability"

Installation, Sales And Service

24 Hrs. - 7 Days A Week - Refrigeration Service

## RAY SHENK

505 E. Woods Drive Lititz, PA 17543 (717) 626-1151

## SAVE COWS, TIME & BEDDING

### COW MATS

Use our unique method of installing a one piece mat under a row of cows. Prevents movement of mat and bedding from creeping underneath. All "row" and single mats are cut from heavy one inch rubber belting

SAVE 40% on

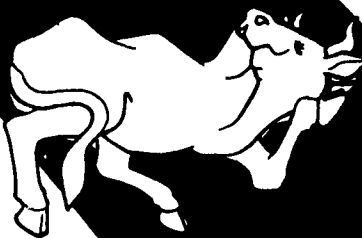
New Replacement Belts For Farm Machines

- Bale Thrower Belts \$70.00
- Grove-Gehl-Int.-S.U. Wagon Box Belts \$120 to \$150

Also Available: Bean Picker Belts & Big Round Baler Belts

Any flat belt can be custom made for your farm machinery (cleats installed). Belts shipped same day by UPS.

Flat belts shipped same day as order



For more information, write:

## Bob Gabel

Rt. 16, Chaffee, New York 14030

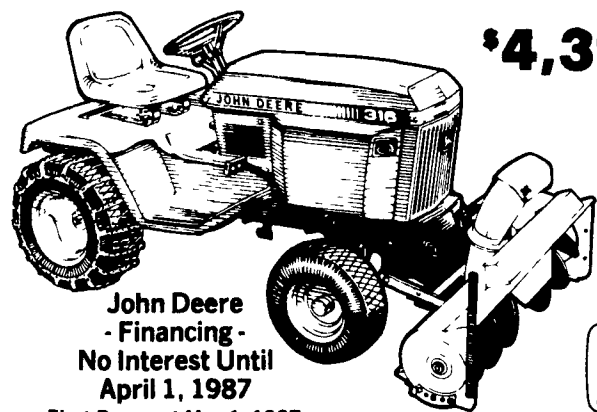
CALL TOLL FREE: 1-800-537-3003

Phone Collect: 716-496-6025

# BEAT THE COLD RUSH

Get your John Deere Snow Removal Equipment today

\$4,399<sup>00</sup>



John Deere - Financing - No Interest Until April 1, 1987 First Payment May 1, 1987 20% Down Required



## 316 Tractor and Snow Thrower

New 316 Tractor can be equipped with an efficient snow thrower attachment. It features shear-bolt-protected auger, reversible cutting blade. Discharge chute rotates 200 degrees. Cuts a 46-in swath. Skid shoes and drift knife are standard.

FINANCING ALSO AVAILABLE THRU BOMBERGER'S AT 7.9% INTEREST - ASK FOR DETAILS!

Monday, Thursday & Friday 'til 9  
Tuesday & Wednesday 'til 6  
Saturday 'til 5

ELM, PA (717) 665-2407



## Ask The Man Who Wears Them

If fitting's your concern, see us!!

POPULAR PECOS PULL-ON



The Pecos 1155 is, by far, our best-selling boot. For the heel-hugging fit of your life, slip on a pair of Pecos boots. We've got your size!

SIZES								
AAA	AA	A	B	C	D	E	EE	EEE
10-14	9-15	8-15	7-16	7-14	5-16	6-15	6-14	7-14

If you are...

AN ASSESSOR, BARBER, COOK, DENTIST, ELECTRICIAN, FIREMAN, GOLDSMITH, HAIR STYLIST, INSURANCE MAN, JANITOR, KUMQUAT PICKER, LAWYER, MECHANIC, NUMISMATIST, OMBUDSMAN, POSTMAN, QUARRY WORKER, ROUST-A-BOUT SALESMAN, TEACHER, UNDERCOVER AGENT, VALET, WAREHOUSEMAN, XYLOPHONIST, YARDMAN, ZOO KEEPER, ARTIST, BAKER, CPA, Etc.

CUSHION CREPE SOLE FOR COMFORT AVAILABLE IN 130 SIZES & WIDTHS

SIZES								
AAA	AA	A	B	C	D	E	EE	EEEE
9 1/2 15	8 1/2 15	7 1/2 16	7 1/2 16	6 1/2 15	5 1/2 16	6 1/2 15	6 1/4	5 1/2 14

WE'VE GOT YOUR SIZE IN STOCK NOW NO WAITING!

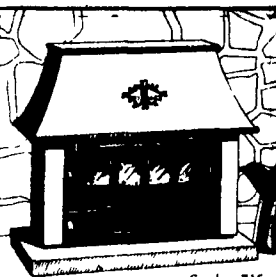
## Red Wings

HOURS: Daily 8:30 A.M. to 6 P.M.; Fri. 'til 9 P.M.



Wayne's Dry Goods  
271 W. Main St.  
Kutztown, Pa.  
Phone (215) 683-7686

MAIL ORDERS ACCEPTED



82% Efficient. Get more heat from your coal.

- 60,000 BTU Output
- Wood & Coal Combination
- Up to 24 Hour Burn Time
- Convection & Radiant Heat



### BETHLEHEM GREENWOOD COAL

Available Now! "Beat The Fall Rush" Fill Your Coal Bins Early!

### BOWMAN'S STOVE SHOP

RD 3, Ephrata, PA 17522  
One Mile East of Ephrata  
On Rt. 322 Just Off Rt. 222  
Tue & Wed 10-6 Thur & Fri 10-8  
Sat 10-4 Closed Mondays  
(717) 733-4973