

York County Farm Women Give \$3,000 To Medical Organizations

BY JOYCE BUPP

York County Correspondent

YORK — York County's 35 active Farm Women societies met Nov. 6 for their annual convention, continuing their commitment to the community with the presentation of \$3,000 to a trio of county medical organizations.

Contributions in the amount of \$1,000 each were presented to the York Hospital Auxiliary, Memorial Hospital Auxiliary, and the York County Cancer Society. Presentation of these funds was the culmination of a year of fund-raising through a drawing for hand-crafted needlework items, including a cross-stitched, floral-design quilt.

More than 250 Farm Women and guests attended the day-long

business meeting and program, held at Wisheaven Hall. In keeping with the theme of "Our children and grandchildren," the afternoon program featured York Central High School's musical show chorus, "Celebration," and pediatrician Dr. Kenneth Heaps.

"We need to give kids a beautiful, safe, bountiful world and the opportunity to be what they want to be," the children's physician emphasized.

Dr. Heaps lamented the lack of communication between children and parents, citing recent study statistics which show that the average set of American parents actually talks with their children less than 15 minutes per week. Stronger home lives, re-establishment of the extended

support family of close relatives, and the expansion of youth support groups can all contribute to a more stable environment for children.

He urged parents and grandparents to demand quality from schools, but acknowledged that young people must arrive there with basic values instilled at home. And, while Dr. Heaps praised the benefits of organized sports and related activities for teenagers, he advised fewer formal activities for younger children, who need more time to "just be a child."

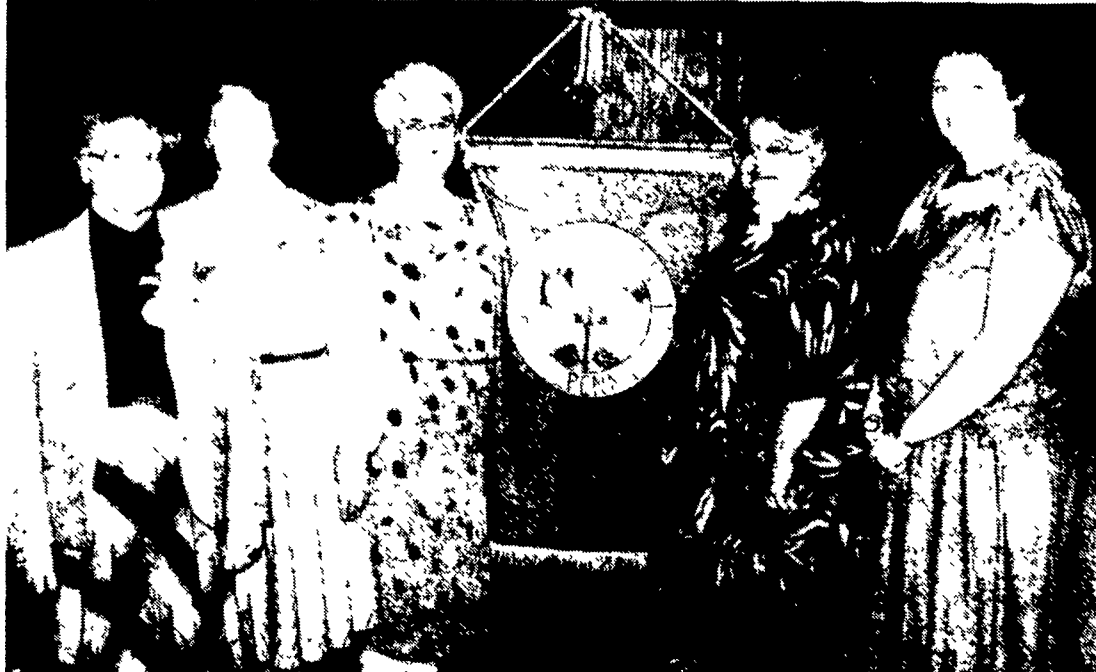
Trudy Reichard, a member of Group 18, was elected to the office of county Farm Women treasurer. Continuing through the second year of their terms are president Ruth Santiago, vice-president Susan Lehman, second vice-

president Carolyn Rishel, and county winners in the state project, secretary Elaine Kroft.

Three members were named (Turn to Page B19)

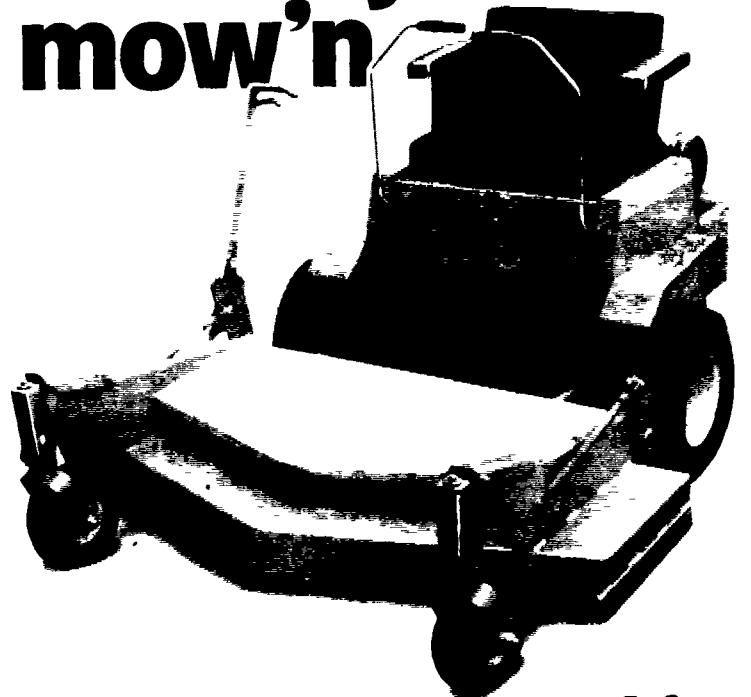


York County Farm Women president Ruth Santiago, left, presented \$1,000 contributions to Kristine Gross, president of the York Hospital Auxiliary; Mary Gable, York Nurse of Hope representing the York Cancer Society; and Mary Krathen, president of the Memorial Hospital Auxiliary.



Officers of the York County Society of Farm Women are, front from left, Carolyn Rishel, second vice president; Ruth Santiago, president; and rear, Elaine Kroft, secretary; newly-elected treasurer Trudy Reichard, and vice president Susan Lehman.

If you're particular about your mow'n



Woods mow'n machine is the particular mower for you...

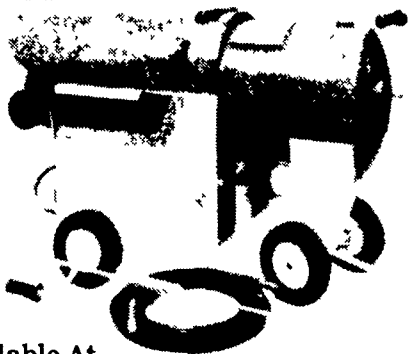
- True 360° zero turning
- Finger-tip control of speed, direction and braking
- Maneuverability that lets you trim as you mow
- Convenient 'out-front' mowing
- Choice of 44", 52" or 61" cutting widths
- Easy-on, easy-off attachments — snowblower, brush and dozer blade

...come in for a demonstration

- | | | |
|--|--|--|
| WM. HOBENSACK'S SONS
Ivyland, PA
215-675-1610 | MANOR EQUIPMENT INC.
Sinking Spring, PA
215-678-0828 | KELLER BROS.
Lititz, PA
717-626-2000 |
| R.S. HOLLINGER & SON, INC.
Mountville, PA
717-285-4538 | KELLER BROS. TRACTOR CO.
Lebanon, PA
717-949-6501 | THOMAS POWER EQUIPMENT
Avondale, PA
215-268-2181 |
| PIPERVILLE GARDEN CENTER
Pipersville, PA
215-766-0414 | SCHREIB & SON
Bath, PA
215-837-7681 | NORMAN BRIGHT, INC.
New Egypt, N.J.
609-758-2211 |
| N.H. FLICKER & SONS, INC.
Maxatawny, PA
215-683-7252 | LAMBS FARM MACHINERY
Thorndale, PA
215-269-2676 | |

HIGH PRESSURE WASHERS

Hot and Cold
From 600 To 2,000 P.S.I.



Available At

GRUMELLI FARM SERVICE
Quarryville, PA (717) 786-7318

SCHLESSMAN'S

HYBRID CORN

10% CASH DISCOUNT NOW

PEMIUM SINGLE CROSSES

- SX-405A ■ SX-711 (New) ■ SX-805 (New)
- SX-642 (New) ■ SX-725 ■ SX-810

PENN STATE TRIALS, ZONE 2

- SX-625 - Highest grain yield and 2nd highest tonnage or best TDN value/acre.

BALER TWINE
For The Best Fall
Prices Call Now...
New Prices In For '87

ALFALFA
Boyds 84 VWAP Boyds Wet Foot
Boyds 78AT Saranac AR and others

WHOLESALE & RETAIL

BOYDELL FARMS

302 Iona Rd., Lebanon, PA 17042
Phone: 717-272-8943

STRIKE IT RICH!

SELL IT WITH A

LANCASTER FARMING CLASSIFIED

