

St. Louis Cattle

Thursday, Nov. 13

Report supplied by USDA

Receipts This Week 3,700
Last Week 3,600
Last Year 3,800

Compared to the previous week's close, slaughter steers and heifers mostly steady, instances .50 higher. Cows 2.00 lower. Bulls steady. Slaughter supply mainly choice steers and heifers, around 5% cows.

SLAUGHTER STEERS: Mixed choice and prime 2-4, mostly 2-3 1075-1375 lbs. 61.00-62.00, part load 62.50. Choice 2-4 975-1375 lbs. 60.00-62.50, mostly 60.00-61.00. Mixed good and choice 2-3 900-1250 lbs. 58.50-60.50. Good 2-3 900-1050 lbs. 56.50-58.50. Standard to good 2-3 1025-1500 lbs. 49.00-53.00.

SLAUGHTER HEIFERS: Mixed choice and prime 2-4, mostly 2-3 900-1150 lbs. 59.50-60.00. Couple part loads 2-3 1050-1150 lbs. 60.50 and 61.00. Choice 2-4 900-1150 lbs. 58.50-59.50. Mixed good and choice 2-3 900-1025 lbs. 56.50-58.50. Good 2-3 900-1000 lbs. 54.50-56.50; 700-900 lbs. 51.50-54.50.

COWS: (Closing week sales) Breaking utility and commercial 2-4 33.00-35.00. Cutter and boning utility 1-2 35.00-36.00. High-yielding cutter and boning utility 1-2 36.00, few up to 37.00. Canner and low cutter 1-2 32.00-34.00. Shelly canner 1-2 30.00-32.00; 600-800 lbs. 27.00-30.00.

BULLS: YG 1-2 1100-1900 lbs. 42.00-46.00. Individual YG 1 47.00.

Wednesday's Weekly Sheep Auction. Receipts around 350 head. Slaughter lambs steady. Slaughter ewes scarce. Feeder lambs steady to 1.00 higher.

SLAUGHTER LAMBS: Choice and prime shorn with no. 1-2 pelts 100-115 lbs. 62.50-67.50. Woolled 95-115 lbs. 61.50-67.00.

SLAUGHTER EWES: Few utility 19.00-23.00.

FEEDER LAMBS: Choice and fancy 60-80 lbs. 62.00-67.50. Few 40-60 lb. choice 60.00-64.00.

Peoria Cattle

Thursday, Nov. 13, 1986

Report Supplied by USDA

Compared with last week's close slaughter steers and heifers closed fully steady, slaughter heifers generally steady. Cows closed weak 1.00 lower. Bulls 2.00 lower. Bulk of supply Monday with light midweek supply steady. Supply mainly good to average

choice slaughter steers and heifers with 10% cows. Estimated receipts this week about 1700 as compared with actual receipts of 1895 a week ago and 2118 a year ago.

SLAUGHTER STEERS: Choice 2-4, mostly 3 1050-1250 lbs. 60.50-62.00; 975-1050 lbs. 59.50-61.00. Mixed good and choice 2-3 1000-1200 lbs. 57.50-59.00. Good 2-3 900-1100 lbs. 56.00-59.00.

SLAUGHTER STEERS: Choice 2-4, mostly 3 950-1150 lbs. 59.50-61.00; 875-950 lbs. 58.00-59.50. Mixed good and choice 2-3 900-1100 lbs. 57.00-58.50. Good 2-3 900-1100 lbs. 55.00-58.00.

COWS: Cutter and boning utility 1-2 33.00-36.50, few high dressing 36.00-37.00. Canner and low cutter 31.00-34.00, few thin 27.00-32.00.

BULLS: YG 1-2 1500-2300 lbs. 42.00-45.00; 1200-1500 lbs. 40.00-42.00.

East Coast Carlot

Wednesday, Nov. 12, 1986

Report supplied by USDA

Compared to Monday's close: Limited supplies of choice and prime special fed veal steady to 5.00 higher. Good and choice boning veal steady to 2.00 lower; limited sales of inshipped generally steady. No comparison available for boxed carcass lamb.

Choice & Prime

(Special Fed)

Hide On 200 Head

220-280 lbs. 155.00-160.00, steady 5.00 higher.

Omaha Weekly

Thursday, Nov. 13

Report Supplied by USDA

Slaughter steers and heifers ended this week at Omaha .50-1.00 higher, heifers more at the full advance. Buyer demand was good this week as most were forced to buy at levels that aren't justified by current cut-out values. Country selling points showlists are at or ahead of schedule and sellers tend to have upper hand in market. Slaughter cows 1.00 lower, slaughter bulls weak to 1.00 lower.

Estimated 5 day receipts this week, 5,900 compared to actuals last week of 6,765 and 6,678 last year. Slaughter steers accounted for 40 percent of the week's receipts, slaughter heifers 43 percent, slaughter cows 5 percent and feeder cattle 10 percent.

SLAUGHTER STEERS: On the close, Choice 2-4 1075-1300 lbs. 62.00-63.50. Mixed Good and Choice 2-3 1050-1200 lbs. 60.50-62.00. Few

Good 57.00-60.50. Few lots good to mostly choice 2-3 1250-1450 lbs. Holsteins 53.50-54.00, small package mostly good 51.50.

SLAUGHTER HEIFERS: on the close, Choice 2-4 975-1125 lbs. 61.00-63.00. Mixed good and choice 2-3 900-1050 lbs. 58.50-61.00. Few good 57.00-59.00.

Average of LS 214 detailed quotations for choice 900-1100 lb. Slaughter Steers this week 61.42, 1100-1300 lbs. 62.75. Average cost of all slaughter steers this week 62.06, average weight 1,183 lbs. compared to 62.00 and 1,202 lbs. last week. Average cost of all slaughter heifers this week 61.29, average weight 1,008 lbs. compared to 61.22 and 1,058 lbs. last week.

SLAUGHTER COWS: Breaking utility and commercial 2-3 34.00-38.50. Cutter and boning Utility 1-3 34.00-37.50, high dressing to 38.75. Low to average cutter, few canning 31.50-34.00, thin light kinds to 28.00.

SLAUGHTER BULLS: few 1-2 1600-2000 lbs. 43.00-46.75, low dressing 1250-1600 lbs. 40.50-42.00.

Weekly Summary

Harrisburg, PA

Friday, Nov. 14

Report supplied by PDA

11 Livestock Markets

CATTLE: 5168. Compared with 6889 head last week and 5566 head a year ago. Steers uneven; heifers steady to 1.00 lower; cows highly uneven; bullocks steady to weak on a small supply; bulls mostly steady; steers High Choice & Prime few No. 2-4, 65.00-68.10; Choice 59.25-64.75; Good 52.00-58.00; Standard 44.50-05.85; Choice heifers 50.00-59.00; Good 45.00-55.00; Standard 40.00-45.75; Breaking Utility & Commercial cows 35.50-39.50; Cutter & Boning

Utility 33.75-37.50; Canner & Cutter 31.25-34.75; shells 23.00; few Choice bullocks 50.00-57.75; Good 48.00-51.00; YG No. 1, 1000-2200 lb. 42.00-51.00; No. 2, 900-1550 lb. 38.00-45.00.

FEEDER CATTLE: Steers Med. & Large No. 1, 300-600 lb. 51.00-64.00; 700-900 lb. 47.00-52.00; Med. & Large No. 1 heifers 300-600 lb. 43.00-55.00; 500-800 lb 35.00-47.75; Med. & Large No. 1 bulls 300-550 lb. 40.00-61.00.

CALVES: 2477. Compared with 4118 head last week and 3069 head a year ago. Vealers steady to 5.00 higher; few Prime 90.00-105.00; Choice 80.00-96.00; Good 60.00-80.00; 90-120 lb. 50.00-60.00; 65-85 lb. 40.00-50.00; holstein bulls 90-135 lb. 55.00-105.00; few heifers 90-125 lb. 48.00-62.00.

HOGS: 4476. Compared with 4432 head last week and 4119 head a year ago. Mostly steady to 1.00 higher; No. 1-2, 210-245 lb. 55.00-56.75; No. 1-3, 210-250 lb. 54.00-55.50; No. 2-3, 215-265 lb. 50.00-54.00; No. 2-3, 220-285 lb. 48.00-51.50; sows steady to weak; No. 1-3, 300-500 lb. 43.00-47.50; 500-650 lb. 47.00-50.00; No. 2-3, 300-700 lb. 37.00-45.00; boars 40.00-44.00.

FEEDER PIGS: 1205. Compared with 904 head last week and 911 head a year ago. Unevenly steady; No. 1-3, 20-35 lb. 25.00-40.00; 35-50 lb. 40.00-49.50; 50-85 lb. 49.00-64.50.

2 GRADED FEEDER PIG SALES: 1754. Compared with 1556 head last week and 2429 head a year ago. Steady to 13.00 higher; No. 1-2, 20-30 lb. 140.00-154.00; 30-40 lb. 123.00-142.00; 40-50 lb. 114.00-132.00; 50-60 lb. 102.00-118.00; 60-75 lb. 85.00-101.00; No. 2-3, 30-40 lb. 106.00-132.00; 40-50 lb. 97.00-114.00; 50-65 lb. 83.00-89.00.

SHEEP: 1082. Compared with 962 head last week and 514 head a

year ago. Wool lambs unevenly steady; High Choice & Prime 75-110 lb. 65.00-74.00; Choice 65-115 lb. 55.00-68.00; Good 60-100 lb. 47.00-59.00; Good & Choice 55-80 lb. feeder lambs 50.00-75.00; sl. sheep 16.00-35.00.

Farm Calendar

(Continued from Page A10)

Ridge Road, Kellers Church. Contact Clyde Bishop, Box 125, Blooming Glen, Pa. 18911.

Saturday, November 22

Huntingdon County DHIA Annual Banquet, Ladies Auxillary Building, Shade Gap, 7:30 p.m.

Monday, November 24

Tax Reform Meeting, Lancaster Farm and Home Center, 7:30 p.m.

Tuesday, November 25

Pa. Grassland Council Annual Forage Conference, Penn State.

Lebanon County DHIA banquet, Prescott Firehall.

Agriculture-Industry Banquet, Four Seasons Restaurant, Landisville, 7 p.m. Century Farm families will be recognized.

Friday, November 28

Christmas '86 Arts and Crafts Spectacular, Farm Show Complex, Harrisburg; continues through Nov. 30.

Saturday, November 29

Mercer County Holstein Banquet, Steese's Restaurant, 8 p.m. Contact the Extension office.

SELL IT WITH A LANCASTER FARMING CLASSIFIED

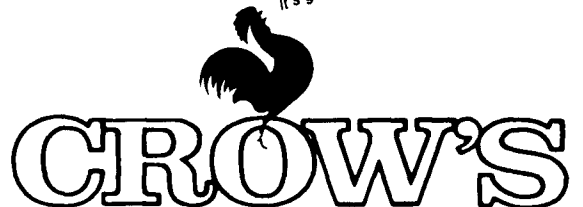



Crow's Hi-Lysine Hybrids — because you have more than one battle to win!

Only Crow's has a complete lineup of 14 Hi Lysine hybrids. They're backed by 20 years of continuous Hi-Lysine research and they've been proven by hundreds of corn growers and livestock producers just like you. Ask your Crow's dealer for the details about his Hi-Lysine hybrids soon.

Crow's Hybrid Corn Company
Milford, IL
Nevada, IA
Greenville, OH

It's great seed for feed!



1935 for fifty years 1985

Write To: Distributed By

TOKEN, INC.
P.O. Box 521
Somerset, VA 22972

C.B. HOOBER & SON, INC.
Intercourse, PA
(717) 768-8231

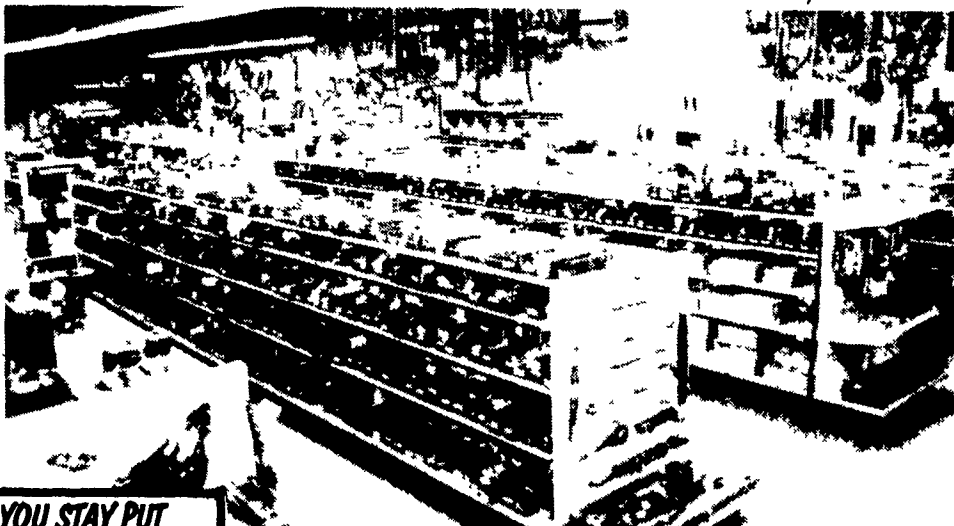


HOOBER EQUIPMENT, INC.
Middletown, DE
(302) 378-9555

The Saving Place

WE SHIP PARTS DAILY

Via UPS - PPSH - BUS - AIR FREIGHT, ETC.



YOU STAY PUT
Pick Up Your Phone And Place Your Parts Order With Us

CALL US...
It Could Be We Have It



Authorized UPS Station