



The Bull-etin Board

Pen-Col Bull Goes To ABS

DeFOREST, Wisc. - A young Holstein bull, Pen-Col Busboy-ET bred by Dennis Wolff of Pen-Col Farms, in Millville, Pa., has been selected by American Breeders Service to enter their Progeny Testing Program.

He has been moved to that company's facilities at DeForest, Wisconsin, where he will join approximately 200 other bulls

being tested this year.

Pen-Col Busboy-ET is the result of a specially planned mating between Cor-Vel Enchantment +\$174, +1,682M and +45 BF and Pen-Col Jason Boots-ET. His dam has production records to 29,665 lbs. of milk at 2 years, 2 months of age. She is classified VG and is sired by Twin-Lawn Elevation Jason.



READ LANCASTER FARMING FOR COMPLETE AND UP-TO-DATE MARKET REPORTS

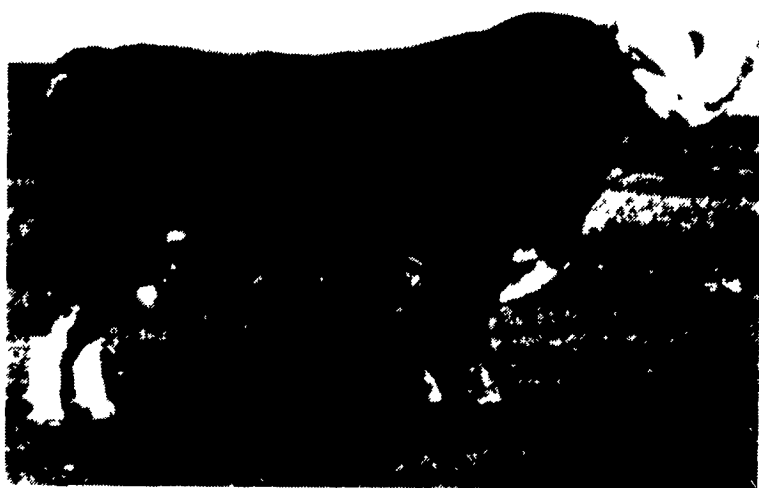
Simmental Bull Is Trait Leader

DeFOREST, Wisc. - ABR Sir Arnold G809 is the nation's first Simmental bull to rank as a Trait Leader for five traits, according to a report recently released by the American Simmental Association.

Sir Arnold was a member of American Breeders Services' Simmental bull battery for a number of years and was widely used by beef cattlemen across the U.S. and Canada.

The American Simmental Association started the Genetic Trait Leader program in 1974 to recognize bulls of the breed that excel in traits important to commercial beef producers. A bull's proficiency in a particular trait is determined by comparing the performance of his registered offspring with that of all other bulls evaluated.

Trait Leaders are recognized in seven traits: calving ease of first calf, birth weight, weaning weight, yearling weight, maternal calving ease, maternal weaning weight, and maternal milking ability. To qualify as a leader for a particular trait, a bull must rank in the top 10



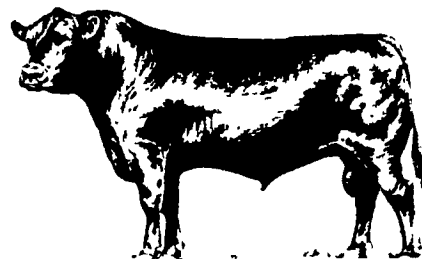
ABR Sir Arnold G809 is the first bull to top five traits in the American Simmental Association's sire summary.

percent of all active bulls evaluated.

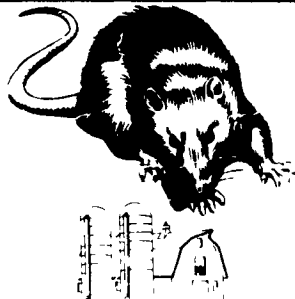
Sir Arnold is the first bull in the breed to rank as a Trait Leader in five of the seven categories. He earns this distinction by qualifying in calving ease first calf, birth weight, weaning weight, yearling

weight, and maternal calving ease.

The Simmental Association's 1987 Sire-Selector is available free to ASA members. Non-members may obtain a copy for \$5 by contacting the American Simmental Association at 1 Simmental Way, Bozeman, Montana, 59715.



ATTENTION FARMERS... FREE ESTIMATES ON RODENT CONTROL



RODENTS carry diseases which can endanger the health of your poultry flocks. Your business is raising them. Ours is protecting them.

We Specialize In Sanitizing And Disinfecting Poultry Houses

Lancaster, PA
397-3721

Lewistown, PA
248-0983

State College, PA
237-7607

Ehrlich

Since 1928
Pest control is too important to trust to anyone else

WHITE WASHING with DAIRY WHITE

- DRIES WHITE
- DOES NOT RUB OFF EASILY
- NO WET FLOORS
- IS COMPATIBLE WITH DISINFECTANT & FLY SPRAYS
- WASHES OFF WINDOWS & PIPELINES EASILY

BARN CLEANING SERVICE AVAILABLE WITH COMPRESSED AIR

To have your barn cleaned with air it will clean off dust, cob webs & lots of old lime. This will keep your barn looking cleaner & whiter longer.

We will take work within 100 mile radius of Lancaster

MAYNARD L. BEITZEL
Witmer, PA 17585 717-392-7227

Barn Spraying Our Business, not a sideline.
Spraying since 1961.

High Pressure Washing And Disinfecting Poultry Houses, Veal Pens, Hog Units And Dairy Barns

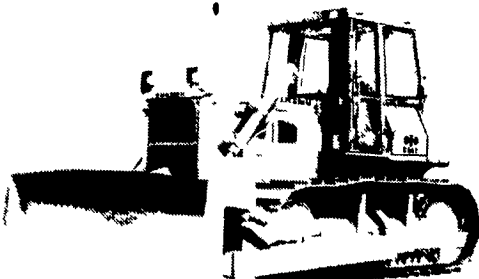
Farm Drainage & Soil Conservation... That's Us!

We Are Fully Equipped To Install Tile With Laser Beam Control



- Improved Land Use and Efficiency
- Better Soil Conservation
- Deeper Root Development
- Increased Crop Yield
- Longer Growing Seasons
- Improved Plant Quality
- Better Livestock Farming

We Specialize In Soil Conservation And Land Improvement Work



We're Equipped With: Dozers, Pans And Excavators To Handle Any Excavating Jobs, Such As Terraces, Waterways, Diversions, Ponds, Etc.



COCALICO EQUIP. CO.

FARM DRAINAGE & EXCAVATING

RD#4, BOX 317, DENVER, PA. 17517 PH: 215-267-3808 717-738-3794



Snavelly's THE FARM BUILDINGS PLACE

"Designed for your needs...to your specifications"

- Pole Barns • Poultry Houses • Dairy Barns
- Horse Stables • Riding Arenas • Utility Buildings
- Hog Houses • Cold Storage • Equipment Sheds
- Storage Buildings • Work Shops • Residences

To help you plan your building and write your own specifications, a professional Snavelly field representative is ready and willing to assist you. For over 100 years Snavelly has satisfied thousands of area farmers. Snavelly's factory fabricated panels, walls, trusses, etc not only make erection easier and faster but also save you considerable money. For a no-charge, no-obligation consultation on your building requirements, phone, visit, or mail the coupon below.

J.C. Snavelly / 150 Main Street, Landisville 717/898-2241
351 West James Street, Lancaster & Sons, Inc. 717/394-7277

J.C. Snavelly & Sons, Inc.
150 Main Street, Landisville, PA 17538

I am interested in _____ (Type of building)

I plan on building about _____ (Date)

Name _____

Address _____

City _____ County _____

State _____ Zip _____

Phone Number _____ / _____