

Boyers Are 3-For-3 At Adams Co. Beef Show

BY GINGER SECRIST MYERS

Adams Co. Correspondent

YORK SPRINGS - The James Boyer family, RD 1, East Berlin had a very good day, Monday, Nov. 3, at the 2nd Annual Adams County 4-H Beef Show and Sale. Each of the three Boyer children nabbed special honors. Jason, 16, was the champion senior showman and fitter; Jamie, 15, showed the grand champion of the show; and Janelle, 13, was champion intermediate showman and fitter and also lead out the reserve champion lightweight steer.

Jamie stated that he was surprised when judge Chet Hughes

selected his 1,335-pound Angus Chi-Hereford steer as the grand champion. Jamie considered his steer, "Hank", to be over finished. Hank consumes 25 pounds of grain daily. However, it was the steer's finish and frame, that in Hughes' opinion, topped the competition.

Jamie got a second surprise at the sale when Hank set a new sale price record of \$1.50 per pound. The buyer was Jamie's grandfather, Glenn Boyer, representing Glenn W. Boyer and Sons, Electrical Contractors, Thomasville. Jamie plans to bankroll his profits to finance his first vehicle next year.

The reserve champion was shown by Carrie Darcey, Gettysburg. A family name long-associated with the Polled Hereford business, this third generation beef showman also took home the champion junior showman and fitter trophy. Carrie purchased her 1,260-pound Hereford steer last November from Les Midla, Flat Stone Lick Farm. This steer was also the reserve grand champion at the South Mountain Fair this past September. Darcey's steer sold for 93 cents a pound to CCNB Bank, New Oxford.

Travis Sherman, Abbotstown, showed the champion lightweight at 1,120 pounds. E & B Crafts, East Berlin, a new buyer at this year's sale, paid 90 cents a pound for this champion.

Amy Sherman, Abbotstown, exhibited the champion middleweight steer at 1185 pounds. She also won the trophy for the champion advanced showman and fitter. Her steer sold to Crabbs

Tropical Treat, Hanover, for 90 cents per pound.

Missie Ortmyer, who had the champion here last year, paraded out the reserve champion middleweight winner at 1,135 pounds. Adams County National Bank was the buyer at 84 cents per pound.

Janelle Boyer rounded out the champion offerings with her reserve champion lightweight at 1,095 pounds. Danners Insurance Agency purchased this steer for \$1 per pound.

There was a total of 25 steers sold with only three selling for less than 80 cents per pound. The event was hosted by Steve and Linda Wenger at Wenger's Saddlery

located adjacent to Route 15. Conducting the sale was Harry Bachman, Annville.

Total sale receipts came to \$26,222, for an average of 86 cents a pound, not counting champions.

Prior to the start of the sale, several items were auctioned off with the proceeds going to help support the costs of the show and sale. Steve and Linda Wenger bought a specially decorated cake for \$100. They then served the cake to the sale audience. Gary Albright paid \$35 for a flower wreath. Charlie Sherman took home a jug of animal body wash for \$15, and Gary Stermer paid \$35 for a ceramic lamp.

Flock Forum

(Continued from Page D2)

vitamin E injections state the intramuscular (IM) injection route. Reports are revealing, however, that (IM) injections have been associated with lameness and/or partial paralysis of the hind leg for several days following treatment. An autopsy showed a good deal of muscle damage or necrosis at the injection site in such cases. Therefore, most experienced sheep veterinarians will recommend a subcutaneous injection (just under the skin). This change in administration seems to eliminate the problem with lame lambs.

An Ounce of Prevention

The other part of the equation in the prevention of White Muscle

Disease is vitamin E. Selenium and vitamin E have a sparing effect on each other but neither one replaces the other.

In two western flocks under study experiencing white muscle disease, tissue analysis confirmed adequate selenium but deficient vitamin E levels. The incidence of white muscle disease ceased when the creep ration contained the calculated daily intake per lamb of 20 to 50 International Units of vitamin E.

Since there is no record of excess vitamin E being toxic to lambs, or other species for that matter, whether injected or added to a ration, it appears wise to include vitamin E along with adequate selenium levels as the other part of a sound white muscle disease prevention program.

Martin Concrete

Subsidiary of Martin Paving, Inc.

CONCRETE MIXED AT JOB SITE

SAVE
\$\$\$



METERED DELIVERY

PAY ONLY FOR WHAT YOU USE!

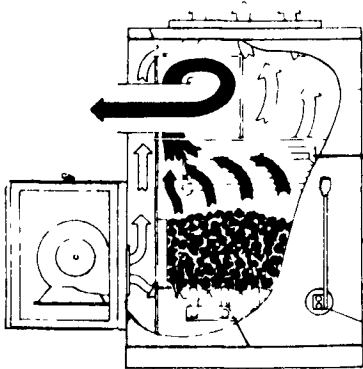
No Waste - We Mix Any Amount You Need
Mixes Can Be Changed Right On The Job

Mon. Thru Sat.
Delivery
P.O. Box 446
Ephrata, PA

Ephrata: (717) 733-7915
Littitz: (717) 626-2494
Lebanon: (717) 272-7541



WOOD - COAL - OIL HOT AIR FURNACES AND WOOD-COAL BOILERS



FEATURES:

- * Harman grate system for ultimate wood/coal performance
- * Automatic draft system
- * Heavy steel plate construction
- * Airtight cast-iron doors
- * External shaker lever
- * 3 speed --1000 cfm blower
- * 5-yr. limited warranty (includes grates)
- * Log Length 19", 23", & 27"
- * Types of fuel: wood/coal (pea, nut, stove sizes)
- * Option Available: Domestic Hot Water Coil

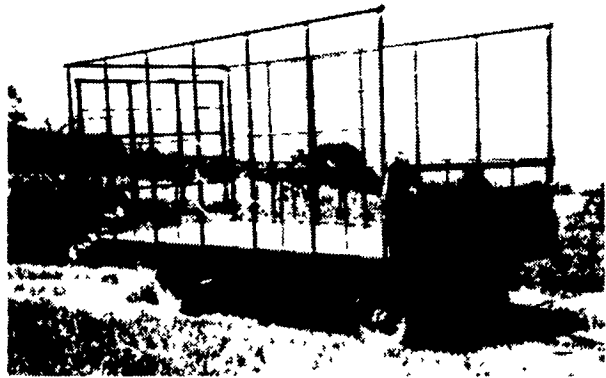
Wholesale To
Heating & Plumbing Trade

WALTZ ENTERPRISES INC.

30 S. Hershey Ave.
(Bareville) Leola, PA 17540
(717) 656-6898

RD 1 Pleasant Valley Rd.
Cogan Station, PA 17728
(717) 998-2539

BEST BUY of the YEAR



- 6" Steel Main Beam
- 2" Vertical Tubing Drilled so that the 1" Horizontal tubing extends Full Length of Wagon
- Front-Side and Rear Loading and Unloading
- 2x8 Pressure Treated Lumber Floor
- 2x6 Oak Cross Beams
- Beds are 8' wide, available in 16, 18 or 21' lengths. Racks are 90" high.
- NEW FEATURE: 6" Channel across back for pushing wagon without damaging bed.

FOR FURTHER INFORMATION, CALL YOUR LOCAL DEALER:

LOST CREEK
IMPLEMENT
Oakland Mill, PA
717-463-2161

MELROSE FARM
SERVICE
Greencastle, PA
717-597-3138

KELLER BROS.
Lebanon, PA
717-949-6501

DUNKLE & GREIB
Mill Hall, PA
717-726-3115

WALTER G. COALE, INC.
Churchville, MD
301-734-7722

TOBIAS EQUIPMENT CO., INC.
Halifax, PA
717-362-3132

NORTHEAST
DISTRIBUTING
West Clifford, Pa.
717-222-9020

VALLEY IMPLEMENT
SALES
Harrisonburg, VA
703-434-9961

CHAMBERSBURG FARM
SUPPLY
Chambersburg, PA
717-264-3533

OXFORD GREENLINE,
INC.
Oxford, PA
215-932-2753

PAUL SHOVER'S, INC.
Loysville, PA
717-789-3117

A.B.C. GROFF
New Holland, PA
717-354-4731

CARLISLE FARM
SERVICE
Carlisle, PA
77-243-4419

CLARK'S FARM SUPPLY
Williamsport, PA
717-494-0060

Manufactured By

CLW MANUFACTURING, INC.

R.D. #2, Box 8
Newburg, Pa. 17240
717-423-6794