



Livestock market and auction news

Virginia Cattle

Richmond, Virginia
Northern, Va.
Thurs., Oct. 30 to
Wed., Nov. 5, 1986

Report Supplied by VDA

Head Count: 12,864

Trend: Steady to 3.00 lower.

STEERS: Medium 1 300-500 lbs. 60.00-69.00; 500-700 lbs. 55.00-66.00; 700-1000 lbs. 51.50-63.00. Large 1 300-500 lbs. 60.00-69.50; 500-700 lbs. 51.50-64.25; 700-1000 lbs. 59.00-68.00. Small 1 300-500 lbs. 50.00-60.50; 500-700 lbs. 50.00-61.00; 700-1000 lbs. 51.50-58.00.

HEIFERS: Medium 1 300-500 lbs. 44.75-55.25; 500-700 lbs. 45.00-55.00; 700-900 lbs. 45.00-51.25. Large 1 300-500 lbs. 50.00-55.00; 500-700 lbs. 47.00-55.00; 700-900 lbs. 49.75-52.00. Small 1 300-500 lbs. 44.00-50.00; 500-700 lbs. 43.00-50.00; 700-900 lbs. 46.50-47.00.

South & Southwest Va.

STEERS: Medium 1 300-500 lbs. 64.00-79.00; 500-700 lbs. 54.00-65.00; 700-900 lbs. 49.50-60.50. Large 1 300-500 lbs. 61.50-71.50; 500-700 lbs. 54.50-64.00; 700-900 lbs. 53.00-60.00. Small 1 300-500 lbs. 55.00-69.50; 500-700 lbs. 47.75-59.00; 700-900 lbs. 49.00-54.00.

HEIFERS: Medium 1 300-500 lbs. 50.00-61.00; 500-700 lbs. 45.00-53.50; 700-900 lbs. 44.50-52.50. Large 1 300-500 lbs. 50.00-63.00; 500-700 lbs. 46.00-55.00; 700-900 lbs. 45.00-52.50. Small 1 300-500 lbs. 43.00-55.25; 500-700 lbs. 41.00-49.25.

Shenandoah Valley Livestock

Harrisonburg, Va.
Saturday, Nov. 1

Report supplied by auction

STEERS: M&L-1 300-500 lbs. 61.00-71.00; 500-700 lbs. 57.00-67.00;

700-1000 lbs. 49.00-58.00; Holstein 300-1000 lbs. 39.50-53.00. S-L&M&L-2 300-500 lbs. 52.00-60.50; 500-700 lbs. 48.50-60.50; 700-1000 lbs. 43.50-53.00.

FEEDER BULLS: M&L-1 200-500 lbs. 57.00-72.50; 500-700 lbs. 46.50-54.75; 700-800 lbs. 40.50-45.00. S-L&M&L-2 200-500 lbs. 51.00-56.00; 500-700 lbs. 46.50-51.00.

HEIFERS: M&L-1 300-500 lbs. 47.00-54.75; 500-700 lbs. 45.00-55.00; 700-1000 lbs. 46.00-50.00. S-L&M&L-2 300-500 lbs. 45.00-49.50; 500-700 lbs. 40.00-50.00; 700-1000 lbs. 40.00-44.50.

STOCK COWS: Beef w/Calves: 400.00-425.00 - Cows by Cut 30.00-36.50. Baby Calves: 10.00-100.00.

SLAUGHTER CATTLE: Trend Large 70.00-100.00; Small 10.00-60.00.

SLAUGHTER COWS: Trend Steady. Utility & Commercial 2-4 30.00-38.00; Canner & Cutters 1-3 25.00-31.00.

SLAUGHTER BULLS: 1&2 39.00-44.00.

LAMBS: Trend Fully 5.00 Higher. Blue O High Choice & Prime 60.15; Red O Choice 60.75;

Feeder Lambs Choice 71.00; Slaughter Ewes 19.50-26.25; Head Ewes 30.00-50.00.

HOGS: Sows 1-3 47.00-54.75; Boars 35.00.

VEAL: Choice & Prime 64.00-74.00.

SLAUGHTER CALVES: Good & Choice 44.00-52.00.

Veal Calves: Choice 69.00-78.00; Good 59.00-66.00; Standard 50.00-58.00; Utility 38.00-49.00.

Farm Calves: Bulls 65.00-87.00; Heifers 57.00-65.00.

Sows: 30.00-38.25.

Boars: 30.00-38.25.

Shoats: 25-30 lbs. per head 15.00-28.00; 30-35 lbs. per head 30.00-37.50; 35-50 lbs. per head 34.00-44.00.

Goats per head: 25.00-49.00.

Penns Valley Livestock

Centre Hall, Pa.
Tuesday, Nov. 4

Report supplied by Auction

Beef Cows: Utility and Commercial 37.50-40.75; Cutters 34.50-36.85; Canners 31.00-34.25; Shells 26.00.

Heifers: Good 54.50-57.25; Standard 50.50-52.00; Commercial 44.00-48.50.

Steers: Good 55.00-57.85; Standard 44.00-48.00.

Bulls: Good 45.10-47.50; Standard 43.10-44.50.

Feeder Cattle: 300-500 lbs. large frame 50.00-68.00; 300-700 lbs. small frame 48.00-57.00; 500-700 lbs. large frame 45.00-55.00; 500-700 lbs. small frame 44.00-51.00.

Shippensburg Wholesale Produce Auction

(Leinbach's)

Shippensburg, PA

Tuesday, Nov. 1 and 4

Report Supplied by Auction

Price quotes are only #1 and Firm Produce.

Apples 1.60-3.00 1/2 bu.
Cabbage .35 hd.
Cauliflower .15-.54 hd.
Cider 1.10-1.70 gal.
Pumpkins neck .25-.40 ea.
Sweet Potatoes 3.00-4.25 1/2 bu.
Tomatoes 4.75-11.00, 25 lb. box.
Turnips 1.75-2.75 1/2 bu.



ATTENTION FARMERS

EVERY MONDAY
HATFIELD PACKING CO. and
MOYER PACKING CO.

Will Receive Your
Hogs and Cattle at the
DANVILLE LIVESTOCK MARKET
RD 4, Danville, PA

- We will receive your hogs from 8 AM to 12 Noon every Monday. Your hogs will be weighed and paid for immediately.
- We will also accept your sows & boars.
- Your cattle will be received from 12:30 to 5 P.M. We will either pay you for your cattle immediately or you may sell them dressed weight.
- There will not be a commission or yardage fee deducted from your check.
- You may call our office Monday morning and we will be able to tell you the base price for hogs for the day.

MELVIN M. LEHMAN - Owner
Danville Buying Station

Phone: 717-275-2880

FRIDAY, NOVEMBER 21
ON THE FARM MONTHLY

BRED GILT SALE

1:00 P.M.

Sale To Start Promptly Every 4 Weeks

Located 18 miles south of Lancaster, Pa., 6 miles south of Quarryville, take Rt. 272 to Little Britain, turn north, follow Little Britain Road to Jackson Road, right. 2nd farm, OR take Rt. 222, out of Quarryville to Cedar Hill Road to Little Britain Road to Jackson Road, left. Watch for sale arrows.

50 to 60 Head
WHITE DIAMOND GILTS
Here Now a new cross again.
Large White & Landrace, first
generation true F-1 gilts.
Parent stock originated from
Lieske Bros. Minnesota. Very
productive in litter size
and feed conversion.

Vaccinated for Lepto, Erysipelas,
Rhinitis, E'Coll, Pasteurella

Hand mated with Breeding Dates

Local Truck Available
No Hogs Sold On Commission

JOHN B. STOLTZFUS
R.D. 1, Kirkwood, Pa.
Abe Diffenbach, Auctioneer AU225L

NEXT SALE DATE DECEMBER 19, 1:00 P.M.

LIVESTOCK HAULING

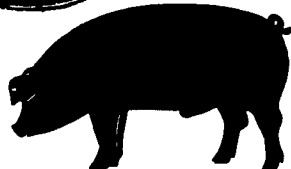
Dependable Service
6 Possum Bottom Tractors
and Trailers
Call Anytime

Vintage Sales Stables, Inc.
L. Robert Frame Manager

Office 717-442-4181
Office & Home: 215-458-5060
Office & Home: 215-458-8518



GWALTNEY OF
SMITHFIELD, LTD.



RECEIVING HOGS:

LANCASTER COUNTY FARMERS

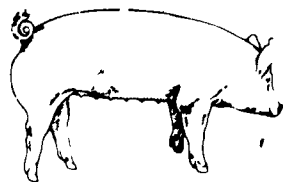
MONDAYS: McCoy's Branch Office, Bareville
WEDNESDAYS: (Next to Bawells Butcher Shop)
& FRIDAYS: on Butler Rd. 717-656-9668

TUESDAYS: B & R Cattle
THURSDAYS: Marietta
717-426-3258

YORK COUNTY FARMERS

MONDAYS: Stewartstown
717-993-2564
TUESDAYS: Thomasville
717-792-2248 or 9836

Contact for information:
Ed Herrmann, 717-284-3203
or Charlie Kauffman, 215-593-5674
Future forward contracts available



EMERY'S
BUYING
STATION

OPEN TO RECEIVE YOUR MARKET HOGS

AT THE GREEN DRAGON MARKET
RD 4, EPHRATA, PA 17522
1 MILE NORTH OF EPHRATA
ON NORTH STATE STREET.

HOURS: MONDAY, TUESDAY, and
WEDNESDAY 6:00 A.M. to 11:30 A.M.
215-458-5677 Residence
717-733-9648 Office

YOU ARE PAID FOR YOUR
HOGS IMMEDIATELY

Ken & Lois Emery, Proprietors

ATTENTION LIVESTOCK PRODUCERS

DUE TO THE RECENT MARKET
RALLY OUR FORWARD CONTRACT
DEADLINE FOR DECEMBER
DELIVERY WILL BE EXTENDED
THRU 2 PM ON NOVEMBER 7th

Extension applies for both hogs & cattle!!

Call For Updates On
Price And Basis:
717-761-2740
800-382-1356



CFS

PFA COMMODITY FUTURES SERVICE, INC.

ATTENTION

Dairy Buyout Farmers

- * Get the most for your herd
- * Go direct - Farm to Packer
- * Any size herd - all weights and grades of cows
- * Trucking provided
- * Paperwork handled quickly and efficiently

TAYLOR
PACKING CO., INC

P.O. Box 188
Wyalusing, PA 18853

717-746-1309