

Four Receive Baker

Scholarships At PSU

UNIVERSITY PARK — Four outstanding 4-H members have been awarded Allen L. Baker and Richard H. Baker scholarships.

The \$250 scholarships are given annually in honor of Allen L. Baker, who served Pennsylvania 4-H for 38 years, and his son, Richard, who was director of financial management at Penn State.

This year's winners are: Richard Dunn, R3 Chicora; Ann Grumbine, R2 Myerstown; Christine McCahren, R1 Mifflintown; and Robert Mikesell, R1 Marion Center. This is the second year that McCahren and Mikesell have won the scholarships.

To be eligible to win, each youth must have Pennsylvania 4-H experience, be enrolled at Penn State and submit a narrative on "The Future of 4-H." They are also judged on their 4-H records.

Richard Dunn, who has been active in 4-H for nine years, is the son of Robert L. and Shirley L. Dunn. A freshman at Penn State, he has completed many 4-H projects and participated in State 4-H Achievement Days.

Ann Grumbine has been active in 4-H for eight years, and is now a freshman in horticulture at Penn State. The daughter of Ray and Martha Grumbine, she served her local club in many capacities, including president. She has also participated in 4-H Leadership Congress, State Achievement Days and Ag Progress Days.

Christine McCahren is a sophomore at Penn State, where she is majoring in agricultural economics and rural sociology. The daughter of William and Sharon McCahren, she has been a 4-H member for 10 years, serving her local club as secretary/treasurer and county council as president. She has also participated in 4-H State Achievement Days, Leadership Congress and Capital Days, as well as the American Institute of Cooperation and the National 4-H Horse Roundup.

Robert Mikesell is a junior in animal production at Penn State. An 11-year 4-H member, he is the son of Mr. and Mrs. Robert Mikesell Sr. He completed many 4-H projects, and served both his local club and county council as president. He has participated in 4-H State Achievement Days and National 4-H Congress, and was chosen the National 4-H Swine Scholarship winner.

ARMSTRONG

FARM MUSCLE



All Orders Over \$250 Delivered Free To Your Farm! (Orders Under \$250... Only A Small Extra Fee)

We Install Tires On Your Farm

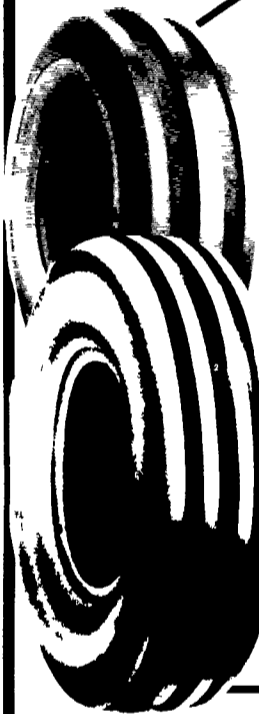
- Centre Hall • Williamsport
- Sunbury • Allentown
- North Penna. • New Jersey
- Northern Maryland

Ask About Our 4 Year Guarantee On Rear Tires Strongest In The Country



FREE MOUNTING ON Super Hi-Power Lug Radials

14 9R28 10 Ply	\$325 00
16 9R28 10 Ply	\$399 00
18 4R34 6 Ply	\$399 00
16R38 6 Ply	\$429 00
18 4R38 6 Ply	\$459 00
18 4R38 8 Ply	\$529 00
18 4R26 10 Ply	\$449 00
20R34 8 Ply	\$639 00
20 8R38 8 Ply	\$649 00
20 8R38 10 Ply	\$699 00



FRONT TRACTOR

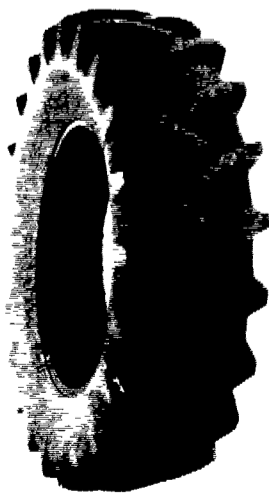
Shipped UPS - No Charge!

★ 3-RIB ★	
400 12	\$22 00
400 15	\$24 00
400 19 4 Ply	\$29 00
500 15	\$31 00
550 16 4 Ply	\$33 00
550 16 6 Ply	\$36 00
600 14 6 Ply	\$52 00
600 16 4 Ply	\$37 00
600 16 6 Ply	\$41 00
650 16 6 Ply	\$42 00
75L 15 6 Ply	\$50 00
750 16 8 Ply	\$54 00
750 15 6 Ply	\$50 00
750 18 6 Ply	\$64 00
750 20 6 Ply	\$77 00
9 5L 15 6 Ply	\$55 00
9 5L 15 8 Ply	\$60 00
10 00 16 6 Ply	\$80 00
11Lx15 8 Ply	\$75 00
11 00 16 8 Ply	\$110 00
14L 16 1 8 Ply	\$160 00
★ 4-RIB ★	
11L 15 8 Ply	\$80 00
10 00 16 6 Ply	\$80 00
10 00 16 (TL) 6 Ply	\$95 00
10 00 16 (TL) 8 Ply	\$106 00
11 00 16 6 Ply	\$108 00
11 00 16 (TL) 6 Ply	\$110 00
11 00 16 8 Ply	\$108 00
11 00 16 (TL) 8 Ply	\$123 00
14L 16 1 (TL) 6 Ply	\$180 00
14L 16 1 8 Ply	\$164 00
16 5L 16 1 (TL) 8 Ply	\$250 00
★ 5-RIB ★	
1100x16 12 Ply Tubeless	\$135 00
1100x16 12 Ply Tubetype	\$150 00

ARMSTRONG

FARM TIRES

Hi Power Lug



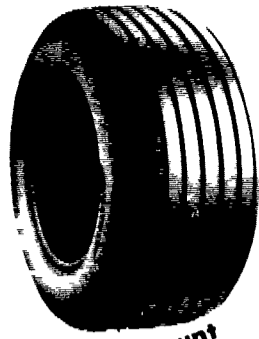
11 2x24 4 Ply	\$106 00
11 2x24 6 Ply	\$125 00
14 9x24 4 Ply	\$161 00
14 9x24 6 Ply	\$172 00
14 9x24 8 Ply	\$200 00
16 9x24 6 Ply	\$200 00
16 9x24 8 Ply	\$220 00
14 9x26 6 Ply	\$180 00
18 4x26 6 Ply	\$247 00
23 1x26 8 Ply	\$525 00
11 2x28 4 Ply	\$120 00
12 4x28 4 Ply	\$137 00
13 6x28 4 Ply	\$150 00
13 6x28 6 Ply	\$165 00
13 6x28 8 Ply	\$195 00
14 9x28 4 Ply	\$165 00
14 9x28 6 Ply	\$185 00
16 9x28 6 Ply	\$225 00
16 9x28 8 Ply	\$245 00
16 9x30 6 Ply	\$240 00
18 4x28 6 Ply	\$300 00
18 4x30 6 Ply	\$270 00
23 1x30 8 Ply	\$650 00
24 5x32 10 Ply	\$775 00
16 9x34 6 Ply	\$270 00
18 4x34 6 Ply	\$310 00
18 4x34 8 Ply	\$335 00
20 8x34 6 Ply	\$479 00
20 8x34 8 Ply	\$510 00
23 1x26 10 Ply	\$600 00
23 1x34 8 Ply	\$689 00
11 2x38 4 Ply	\$147 00
12 4x38 4 Ply	\$175 00
13 6x38 4 Ply	\$185 00
13 6x38 6 Ply	\$205 00
14 9x38 6 Ply	\$224 00
15 5x38 6 Ply	\$235 00
15 5x38 8 Ply	\$260 00
16 9x38 6 Ply	\$295 00
16 9x38 8 Ply	\$325 00
18 4x38 6 Ply	\$340 00
18 4x38 8 Ply	\$380 00
20 8x38 8 Ply	\$520 00

Small Rear Farm Tires



750x20 4 Ply	\$59 95
750x24 4 Ply	\$64 95
8 3x21 4 Ply	\$82 00
9 5x24 4 Ply	\$92 00
11 2x34 4 Ply	\$142 00
11 2x36 4 Ply	\$144 00
12 4x24 4 Ply	\$123 00
12 4x36 4 Ply	\$175 00
13 9x36 6 Ply	\$200 00

WAGON TIRES



26 1200x12 4 Ply	\$49 00
8 51x14 6 Ply	\$41 00
9 5Lx14 6 Ply	\$44 00
9 5Lx14 8 Ply	\$49 50
9 5Lx15 6 Ply	\$42 00
9 5Lx15 8 Ply	\$44 00
11Lx14 6 Ply	\$49 00
11Lx15 6 Ply	\$43 00
11Lx15 8 Ply	\$47 00
11Lx15 10 Ply	\$80 00
1000x15 8 Ply	\$80 00
11Lx15 8 Ply Tubeless	\$50 00
11Lx16 8 Ply	\$58 00
11Lx16 10 Ply Tubeless	\$74 00
12 5Lx15 10 Ply	\$75 00
12 5Lx16 14 Ply	\$85 00
12 5Lx15 12 Ply	\$87 00
14Lx16 1 12 Ply	\$140 00
16 5Lx16 1 10 Ply Tubeless	\$160 00
25x7 50x15 4 Ply Tubeless	\$44 00
25x7 50x15 6 Ply Tubeless	\$49 00
27x9 50x15 4 Ply Tubeless	\$53 00
27x9 50x15 6 Ply Tubeless	\$60 00
27x9 50x15 8 Ply Tubeless	\$65 00
31x13 50x15 6 Ply Tubeless	\$88 00
31x13 50x15 8 Ply Tubeless	\$99 00

Special Discount \$5.00 OFF These Prices

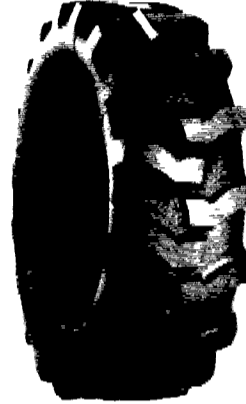
WAGON TIRES SHIPPED UPS - NO CHARGE!

ARMSTRONG

TUBELESS *

16 9x24 8 Ply	\$265 00
16 9x24 10 Ply	\$330 00
17 5Lx24 6 Ply	\$245 00
17 5x24 8 Ply	\$270 00
15 5x25 12 Ply	\$310 00
17 5x25 12 Ply	\$440 00
19 5Lx24 10 Ply	\$390 00
19 5Lx24 12 Ply	\$430 00
12Lx24 12 Ply	\$500 00
20 5x25 12 Ply	\$643 00
23 5x25 12 Ply	\$960 00
23 5x25 16 Ply	\$1 000 00

Loader-Dozer



ARMSTRONG

TUBE TYPE *

14 9x24 6 Ply	\$200 00
14 9x24 8 Ply	\$220 00
16 9x24 6 Ply	\$220 00
16 9x24 8 Ply	\$235 00
16 9x24 10 Ply	\$280 00
17 5Lx24 8 Ply	\$240 00
16 9x28 8 Ply	\$260 00
18 4x28 10 Ply	\$340 00
20 5x25 12 Ply	Call For Quote
23 5x25 16 Ply	\$225 00
1300x24 10 Ply	\$245 00
1400x24 10 Ply	\$255 00
1400x24 12 Ply	\$280 00

ARMSTRONG

ARMSTRONG

USED GRASS TIRES IN STOCK!

8 3x24	\$100 00
9 5x24	\$112 00
14 9x24 6 Ply	\$200 00
16 9x24 6 Ply	\$210 00
18 4x16 1 6 Ply	\$245 00
18 4x26 6 Ply	\$360 00
13 6x28 6 Ply	\$225 00

SKID LOADER TIRES

570x12 4 Ply	\$40 00
23 850x12 4 Ply	\$47 00
27 850x15 4 Ply	\$51 00
27 850x15 6 Ply	\$65 00
27 1050x15 6 Ply	\$70 00
700x15 6 Ply	\$65 00
750x15 6 Ply	\$68 00
10 16 5 6 Ply	\$80 00
12 16 5 8 Ply	\$120 00
Steel Shield	
10 16 5 6 Ply	\$95 00

Above Tires Shipped To You FREE

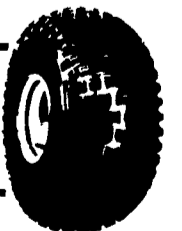
CONTRACTOR F-3

11Lx15 8 Ply	\$80 00
11Lx16 8 Ply	\$92 00
11Lx16 10 Ply	\$98 00
750 800x16 10 Ply	\$80 00
11Lx16 12 Ply	\$130 00
145 75 16 1 10 Ply	\$225 00

3 WHEELER TIRES

22x11 00 8	\$38 01
25x12 9	\$54 71
18x950 8	\$30 65

Ask About Special Mounting Prices!

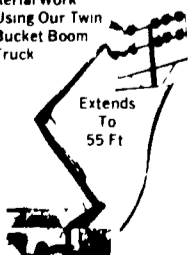


NEED SOMEONE WHO CAN FILL THE SHOES?

Try A Help Wanted Ad In Classified.

Phone 717-394-3047 or 717-626-1164

We Specialize In Aerial Work Using Our Twin Bucket Boom Truck



ELECTRICAL CONTRACTING

Specializing In AGRICULTURAL WIRING

Also Residential Industrial And Commercial Work Free Estimates

C. M. HIGH CO.

320 King St Myerstown PA 17067 Phone 717 866 7544

We Have Poles In Stock 25 30 35 & 45

Route 220 West

MUMMAU TIRE

Serving Farmers In Penna. New Jersey Northern Maryland and Delaware

Out Of State 717-653-1260 In Penna. 1-800-222-1729

Mt. Joy, PA