

New Disk Harrow Built For Rough Going

RACINE, Wisc. — The Case IH medium-duty 475 disk harrow is now available in a cushion gang model that provides superior performance in rocky and rugged conditions.

The flexible C-shaped cushion gang bearing standard allows the gang to move backward and up-

ward when colliding with obstructions to prevent gang damage. The single leaf design is capable of absorbing high shock loads without bottoming out, while retaining the necessary soft cushioning at initial impact.

Like the conventional 475 disk harrow, the cushion gang harrow

is equipped with patented Earth Metal crimped-center disk blades. Earth Metal blades feature a non-directional internal structure which greatly increases blade life and durability.

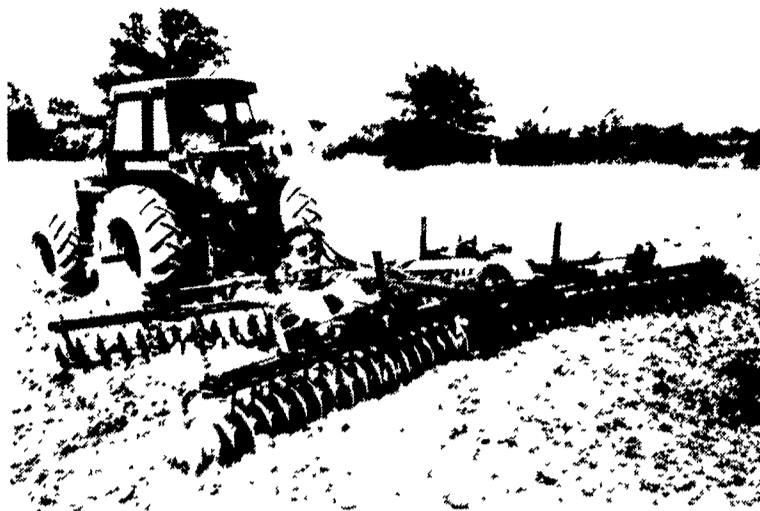
Designed with opposed action gangs, Case IH harrows are easier to level and result in superior

seedbed conditioning when compared with competitive offset-tandem models.

digging in and shallowing out in rough terrain.

A spring-cushioned, self-leveling hitch is standard on both 475 models. This advanced hitch system keeps the disk level from front to back and eliminates

The 475 cushion gang model is one of 14 Case IH disk harrow models ranging in cutting widths from 5 ft. 6 in. to 32 ft. The cushion gang feature is also available on the 496 flex-wing disk harrow.



The new Case IH 475 cushion gang disk harrow is available in six widths.

NEW STEEL UNDERGROUND FUEL STORAGE TANKS

Capacity (Gallons)	Diameter	Length	Gauge (Thickness)	Weight (Pounds)	Price FOB Quarryville
285	3'0"	5'6"	12	277	*149.00
550	4'0"	6'0"	10	537	225.00
550	4'0"	6'0"	7	738	280.00
1,000	4'0"	10'8"	10	845	380.00
1,000	4'0"	10'8"	7	1,158	440.00
1,000	5'4"	6'0"	7	1,059	445.00

Tanks are fabricated in strict accordance with the specifications of Underwriters' Laboratories, Inc. Exteriors of underground tanks are coated with black asphaltum paint. Exteriors of above ground tanks are coated with red primer.

NEW STEEL UNDERGROUND sti-P₃ FUEL STORAGE TANKS

Capacity (Gallons)	Diameter	Length	Gauge (Thickness)	Weight (Pounds)	Price FOB Quarryville
550	4'0"	6'0"	7	831	555.00
1,000	4'0"	10'8"	7	1,266	820.00
1,000	5'4"	6'0"	7	1,164	820.00
1,500	5'4"	9'0"	7	1,577	1,100.00
2,000	5'4"	12'0"	7	1,914	1,248.00
3,000	5'4"	18'0"	7	2,657	1,670.00
4,000	5'4"	24'0"	7	3,403	2,080.00
5,000	6'0"	23'10"	¼"	5,508	3,090.00
5,000	8'0"	13'4"	¼"	4,800	2,660.00
6,000	6'0"	28'10"	¼"	6,239	3,535.00
6,000	8'0"	16'2"	¼"	5,500	3,000.00
8,000	8'0"	21'6"	¼"	6,927	3,660.00
10,000	8'0"	26'10"	¼"	8,357	4,310.00
10,000	10'0"	17'0"	¼"	7,446	4,020.00
10,000	10'6"	15'9"	¼"	7,412	4,070.00

The sti-P₃ tanks bear Underwriters' Underground Label, sti-P₃ Label, 30-year limited warranty. The sti-P₃ tanks are equipped with sacrificial galvanic anodes, urethane paint and dielectric bushings. The sti-P₃ are equipped with the Protection Prover II (to monitor anode voltage).

USED STEEL STORAGE TANKS

From 275 to 30,000 Gallons At .05¢ to .06¢ Per Gallon

USED UNDERGROUND FIBERGLAS STORAGE TANKS

6,000 Gallons At .12¢ Per Gallon

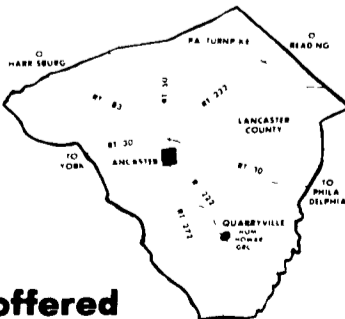
NEW GASBOY AND FILL-RITE FUEL PUMPS

Available At Below Factory List

LOW PRICE PROTECTION POLICY:

Within 30 days of purchase if someone advertises or offers at a lower price the same tank you have already purchased from us, let us know, because we'll pay you the difference!

An Additional 1% DISCOUNT is offered if paid by Cash Money or Certified Check



HOWARD E. GROFF CO.

Over Forty Years of Reliable Service

Fuel Oil, Gasoline, and Coal

111 E. State Street, Quarryville, PA 17566

Phone: 717-786-2166

HOURS:

Mon.-Fri.: 8 AM - 4 PM

Martin Concrete

Subsidiary of Martin Paving, Inc.

CONCRETE MIXED AT JOB SITE

SAVE \$\$\$



METERED DELIVERY

PAY ONLY FOR WHAT YOU USE!

No Waste - We Mix Any Amount You Need
Mixes Can Be Changed Right On The Job

Mon. Thru Sat.
Delivery
P.O. Box 446
Ephrata, PA

Ephrata: (717) 733-7915
Lititz: (717) 626-2494
Lebanon: (717) 272-7541



BLOCKING CHUTE



- For safe and easy grooming, washing and clipping cattle
- Expanded metal floor stays cleaner and gives more traction
- Assembles and disassembles quick and easy
- Can easily be moved and loaded by one person

PAUL B. ZIMMERMAN, INC.

Call or Write For Additional Information And Your Nearest Dealer

295 Woodcorner Rd
Lititz, PA 17543
1 Mile West of Ephrata
Phone: 717-738-1121