

Dauphin Co. DHIA

(Continued from Page D12)

Peg	3	3-1	17,663	3 7	662
Fawn	3	2-2	18,597	3 4	626
Grace	3	2-4	16,161	4 0	645
Pleasant Hill Farms					
Ajax 6	3	5-5	18,797	3 5	660
Colleen	3	5-1	17,948	3 8	682
Sandra	3	3-5	20,976	3 0	636
Ella 39	3	3-3	17,482	3 6	621
Mahlon L. Lehman					
Keri	3	7-4	22,632	3 4	773
Dora	3	4 11	19,092	3 9	747
Walter Schaffer					
46	3	5-9	15,395	4 6	706
J Melvin Brandt					
70	3	5-11	23,510	3 5	815
488	3	3-3	16,475	4 1	682
316	3	2-5	18,631	3 2	604
Wilmer Campbell					
Phoebie	3	6-0	18,596	4 0	751
Phyllis	3	7 10	19,081	4 4	846
Fairy	3	4 2	18,271	4 5	829
Alwine Farms					
Sexy	3	3 0	19,397	3 5	685
70	3	4 0	17,486	3 7	649
20	3	3 1	16,464	4 0	660
Catalpa Farms					
79	3	9 0	22,078	3 7	813
162	3	6 10	23,732	3 2	770
206	3	6 0	20,023	3 8	759
259	3	5 0	18,716	3 3	624
241	3	5-3	26,914	3 5	951
393	3	3 0	24,901	3 3	810
361	3	3 3	16,711	3 9	648
396	3	2 11	22,586	3 2	717

395	3	3 0	15,771	4 0	625
384	3	3-1	20,101	3 9	793
442	3	2 2	17,306	3 6	624
Stanley R Long					
Kristy	3	5 10	19,767	4 1	809
Andria	3	5-1	15,894	3 9	613
Nan	3	4-8	18,575	3 6	676
Steffie	3	4-5	21,030	3 9	822
Ruby	3	3-4	16,481	3 8	627
Tonya	3	2-2	16,361	3 7	610
Restful Acres					
Marla	3	5-10	27,313	3 1	839
Tine	3	5 4	24,274	3 4	827
Kitten	3	5 0	25,416	3 3	835
Mintz	3	3-10	28,387	3 1	873
Bottle	3	1-7	16,830	3 7	630
Bernie	3	1-9	16,337	3 8	627
Nell	3	1-10	18,580	3 4	624
Robert H Beach Jr					
253	3	3 3	24,241	3 2	785
259	3	3 0	17,720	3 5	613
Lauden Farms					
15	3	3 0	16,075	4 3	696
29	3	3 0	19,787	3 1	614
Great View Farms					
Patti	3	10 5	20,287	4 5	910
L Belle	3	9 4	22,840	3 2	727
Sherry	3	4 2	19,971	3 5	692
Sandy	3	3 10	15,507	4 3	665
Marva	3	3 6	17,560	3 5	607
Roy M Brubaker					
Miriam	3	9 3	17,968	4 3	764
Joyce 28	3	6 5	22,259	3 1	695
Lizzie	3	6 0	20,227	3 2	647
Carrie	3	5 4	20,807	3 7	775
Valerie	3	4 0	19,369	4 3	842
Blossom	3	3 8	19,951	4 2	816
Evie 60	3	3 3	16,275	4 0	649

Isabel	3	3-2	19,837	3 5	693
Joelle	3	2 7	14,464	4 6	672
Nell67	3	2-4	18,325	3 5	637
Fern69	3	2-4	16,364	3 8	630
Jadine	3	2-9	16,642	3 7	615
Sher Mar Acres					
86	3	4-5	15,323	4 1	624
0	3	4-4	14,526	4 2	603
248	3	5-10	16,842	3 7	631
Paul E Clugston					
144	3	5-4	18,539	3 8	712
20	3	3-11	17,182	3 7	634
46	3	4-1	15,747	4 0	637
128	3	3-3	18,686	3 7	694
178	3	3-1	18,209	3 8	689
183	3	2 11	15,036	4 7	714
Wil-Lene Farms					
57	3	7-9	19,680	3 4	661
60	3	9-2	21,178	3 4	711
91	3	4-3	18,623	3 5	659
28	3	3-5	20,663	3 5	726
5	3	2-1	17,366	3 8	665
11	3	2 5	18,957	3 5	666
Al Ty Farms					
Amber	3	8-1	15,913	4 6	734
Mabel	3	4-2	14,472	4 3	620
Sparky	3	3-8	14,210	4 8	688
Dauphin-Way Farms					
Judy 8	3	5-2	19,471	3 3	646
Tresia	3	6-8	25,643	3 2	828
Tina 10	3	4 0	17,567	3 6	630
Alta 37	3	3 0	14,063	4 3	607
Tesie 25	3	4 1	15,833	4 1	645
M&J Farms					
49	3	3-6	20,543	3 0	615
Jay K Brackbill					
29	3	6-4	22,531	3 0	667

(Turn to Page D14)

SPECIAL INVENTORY CLEARANCE SALE

15% OFF

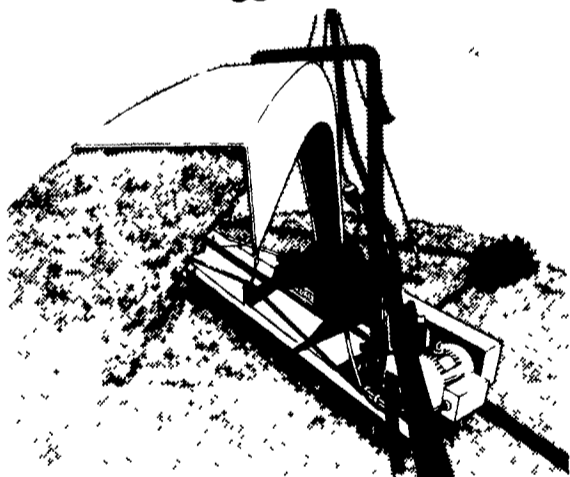
ON ALL VAN DALE UNLOADERS

SALE ENDS NOV. 15, 1986

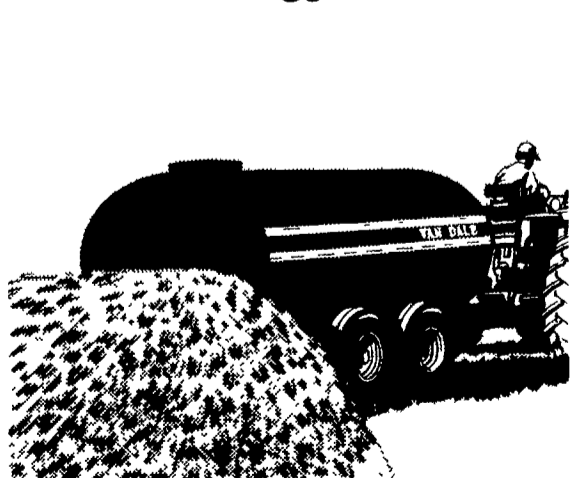
It takes performance to tame today's tough jobs:

YOU & VAN DALE.

Performance for tough silo-unloading jobs:



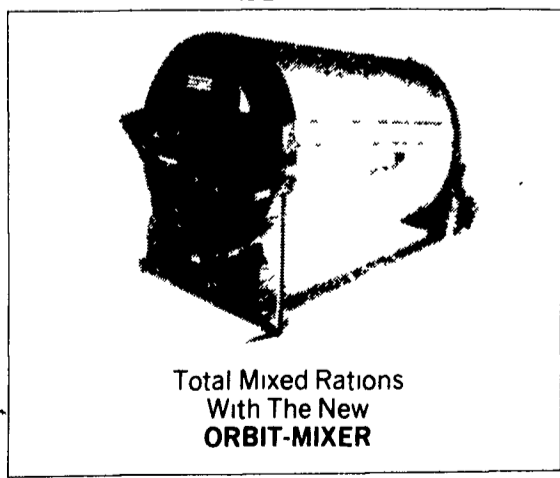
Performance for tough manure-handling jobs:



Performance for tough feed-distribution jobs:



Performance for tough ration-building jobs:



Check Our Prices Before You Buy.

VAN DALE

Van Dale, Inc.
Box 337, Long Lake, MN 55356

LANCASTER SILO CO.

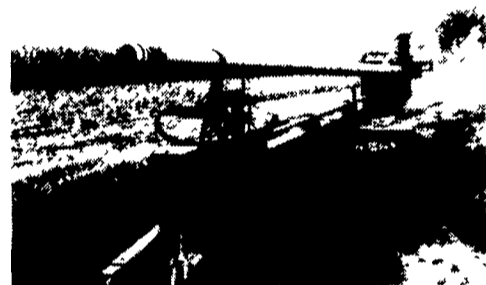
2008 Horseshoe Rd., Lancaster, PA

717/299-3721



READ LANCASTER FARMING FOR COMPLETE AND UP-TO-DATE MARKET REPORTS

LAGOON PUMPS



Hydraulically Operated From Tractor Seat

HENRY K. BLANK
Gibbons Rd. Bird-In-Hand, PA
(717) 656-6109

DISCOVER ALASKA THIS SUMMER!

(Register by December 30 and receive \$100 or \$200-per-person discount)

Menonite Your Way

1987 ALASKA TOUR
July 9-22, 1987

Enjoy 10 days visiting Mt. McKinley and gold rush country experiencing a river boat cruise fellowshipping with Anchorage Menonites and much more!

Then—for four days on a cruise ship—view towering mountains, rugged glaciers and abundant wildlife

Cap off your tour with a one-day visit to beautiful Vancouver, British Columbia

For information write:

MYW Alaska Tour
Menno Travel Service
P.O. Box 547

Ephrata, PA 17522

(717) 653-9288 or 733-4131 or (800) 233-0157 for non-PA callers

Westours is Alaska