

# Massey Introduces Compact Diesel Tractors

DES MOINES, Iowa — Massey-Ferguson has introduced four new compact tractors to meet the increasing demand for diesel-powered tractors under 40 horsepower in both urban and rural markets.

The new Massey-Ferguson 1000 Series tractors include the M-F 1020 Hydro at 21 engine horsepower, the M-F 1030 at 26 horsepower, the M-F 1035 at 31 horsepower and the M-F 1045 at 35 horsepower.

The new models replace the old M-F 1030 and M-F 1040 compacts, and join the current M-F 1010, 1010 Hydro, and 1020. Each tractor is available in either two or four-wheel drive.

Compact tractor applications now include light construction, grounds maintenance, small acreage farming, lawn care, gardening, landscaping, livestock operations and many others.

#### M-F 1020 Hydro

The M-F 1020 Hydro features a hydrostatic transmission. This makes the tractor highly maneuverable in confined

locations such as stables or around building sites, and easy to use in lawn care and grounds maintenance applications. A foot pedal controls speed and forward or reverse direction with toe or heel pressure, leaving the operator's hands free for steering.

Also, cruise control, which is activated by a conveniently located hand lever, makes it easy to maintain a constant forward speed during open field work.

The M-F 1020 Hydro is equipped with a Category I three-point hitch that has adjustable right-hand lift links and top lift links. For a 21 horsepower tractor, the 1,543-pound lift capacity of the three-point hitch is exceptional.

This tractor is also equipped with rear and mid-mount PTO. The rear PTO may be operated as a "live" PTO, with the implement brought up to operating speed before starting tractor movement. Conversely, the tractor may be brought to a complete stop without interrupting PTO power. The forward facing mid-PTO is engaged or disengaged by the

same lever that controls the rear PTO.

#### M-F 1030

The M-F 1030, at 26 horsepower, is the next step up in size for landscape contractors, weekend farmers, recreation operators, larger estate owners and others needing a tractor to handle larger implements.

The M-F 1030 features a synchromesh transmission with 12 forward speeds and four reverse, with speeds ranging from 0.4 to 11.3 mph. The main gearbox has three forward speed ranges and one reverse, and the synchromesh design permits smooth on-the-move shifting and shuttling within each range.

The M-F1030 has a sealed wet disc brake system, "live" PTO, and power assist steering on the four-wheel-drive model, which is also available as an option on the two-wheel-drive.

Lift capacity for the Category I three-point hitch is 1,716 pounds. A position control lever raises, lowers and sets the three-point linkage at the desired position.



One of four new compact tractors from Massey-Ferguson, the M-F 1045 offers 35 engine horsepower and a nine-speed synchronized transmission.

#### M-F 1035 and M-F 1045

The 30 horsepower M-F 1035 and 35 horsepower M-F 1045 (which has 30 horsepower at the PTO) are workhorse compacts for jobs that

require bigger power and bigger implements.

The M-F 1035 transmission has 12 forward speeds and four reverse; the M-F 1045 offers nine forward and three reverse. Speed ranges are from 0.4 to 12.4 mph for the M-F 1035, and 0.7 to 11.0 mph for the M-F 1045.

A synchromesh transmission for both models permits smooth on-the-move shifting within each of three forward gear ranges, and one reverse range. The operator may even shift from forward to reverse without bringing the tractor to a stop — a real time saver for shuttle loader operations.

Power take-off capability for operating implements is important in a wide range of uses, and the M-F 1035 and M-F 1045 offer a "live" PTO to operate implements at any tractor speed, or to continue operating the implement when the tractor's forward motion is stopped.

Category I three-point hitch lift capacity is 1,716 pounds for the M-F 1035, and 1,727 pounds for the M-F 1045.

#### Long-Term Reliability

Dependability and long service life are major design criteria for the M-F 1000 Series tractors. Their three-cylinder engines run smooth to reduce vibration and produce higher torque at lower engine speeds to increase service life.

Pressure lubrication keeps all working components well oiled; clean air flow to the engine is maintained by an efficient air filtering system; a thermostat-controlled liquid cooling system maintains uniform operating temperatures. All add to long trouble-free engine life.



Member Larry Geib and family with Executive Loan Officer Darryl Gross and Vice President of Credit/Operations Richard Smith

**Availability and understanding are two services most farmers need and we provide them both.**

**We speak your language.**<sup>SM</sup> At Farm Credit, we don't think a lender can really understand what's behind your requests by staying behind a desk. So, to us, going all out to serve you includes going all the way: to the farm, to the field. To wherever it's convenient for you. When you can't take the time to come to us, we know how important it is to make the time to come to you. As farmer-owned, farmer-controlled cooperative lending institutions, we're true specialists in agricultural credit. Our loan

officers can provide the information you need to make important financial decisions. We're in business to help make things better for farmers and their cooperatives. And we do it by providing a wide range of financial services for everything from operating expenses and equipment to land acquisition and family needs.

There's an office near you. Call today, and see how handy it can be to talk loans with the people who speak your language.

#### LANCASTER FARM CREDIT SERVICE

Anville	867-4474
Elizabethville	362-8115
Lancaster	291-1855
New Holland	354-6300
Quarryville	786-7007

**FARMING**  
spoken here.

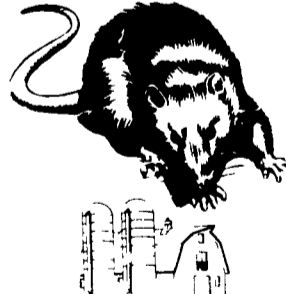


The Farm Credit System



Copyright Farm Credit Banks 1985

**ATTENTION FARMERS... FREE ESTIMATES ON RODENT CONTROL**



RODENTS carry diseases which can endanger the health of your poultry flocks. Your business is raising them. Ours is protecting them.

**We Specialize In Sanitizing And Disinfecting Poultry Houses**

**Ehrlich**

Since 1928

Pest control is too important to trust to anyone else

Lancaster, PA  
397-3721

Lewistown, PA  
248-0983

State College, PA  
237-7607