

WIG

THE BETTER BEDDER



QUICK CHANGE KNIVES
No Bolts

STRING PROOF ROTOR
No Wrapping

3 SIDED BLADES
6 Cutting Edges

TRADES ACCEPTED - LEASING AVAILABLE

Call Today Toll Free
Or See Your Local Dealer

US AGRI-SYSTEMS

SPECIALIZED FARM EQUIPMENT

OXFORD, PA 19363

(800) 222-2948 (301) 398-2948

MANURE MANAGEMENT SPECIALISTS

FALL SPECIALS

- New & Used Weaverline electric feed carts
- Reconditioned Sputnik
- Fans for Winter Ventilation
- Sputnik Parts Shipped UPS

EDGEFIELD FARMS

44 Edgefield Rd.

Quarryville, Pa.

717-786-3591

ATTENTION BUY OUT FARMERS

We Need Good Used Tanks
800 - 3,000 Gal. - Call Us

USED BULK TANKS

All Tanks Guaranteed A-1 Working Condition

- | | |
|---|--|
| • 300 Gal. Girton | • 800 Gal. Surge (All Stainless Steel) |
| • 400 Gal. DeLaval | • 800 Gal. Girton |
| • 500 Gal. Girton D4 | • 800 Gal. Esco |
| • 500 Gal. Mojonnier | • 800 Gal. Dari-Kool |
| • 500 Gal. Mojonnier (Flat Top) | • 800 Gal. Zero |
| • 600 Gal. Jamesway | • 800 Gal. Mueller "OH" |
| • 625 Gal. Sunset | • 1500 Gal. Round (Nice) |
| • 630 Gal. Mojonnier | • 3000 GAL Dari-Kool |
| • 735 Gal. Sunset | |
| • 600 GAL. 31" POURING HEIGHT VERY NICE | |
| 400, 500, 600 & 800 Gal. (Storage Tanks) | |
| Surge Pipeline Complete • 1 - 2" Surge Pipeline | |
| • Used 3 & 5 H.P. Electric Motors | |

USED COMPRESSORS

3 H.P., 4 H.P., 5 H.P. - R12 & R22

24 Hrs. - 7 Days A Week - Refrigeration Service

Installation, Sales And Service

RAY SHENK

505 E. Woods Drive

Lititz, PA 17543

(717) 626-1151

6

DAIRY EQUIPMENT

USED TANKS

- 250 Gal. Girton
- 500 Gal. Girton
- 500 Gal. Mojonnier, Round
- 600 Gal. Mojonnier, Round

STORAGE TANKS

- 450 Gal. Dari-Kool
 - 650 Gal. Esco
 - 1000 Gal. Esco
- Hagerstown, MD
301-797-3921

Wehr's Dairy Equipment

Quality Equipment - Quality Service



Hi-Tech Milking and Computer Feeding Systems.

24 Hour Service

(717) 966-1396

RD2, Mifflinburg

SMUCKER'S SALES & SERVICE, INC.

RD #2, Box 21

New Holland, PA 17557

(717) 354-4158

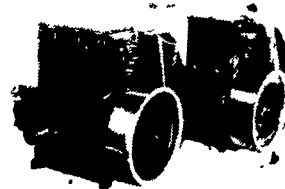
If No Answer, 24 Hr. Service, Call (717) 354-4374

DIESEL AND REFRIGERATION SERVICE



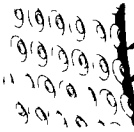
3-150 bhp

**TS2/TS3
AIR
COOLED
DIESELS**

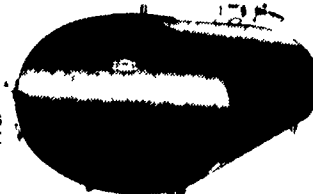


Authorized Dealer For
MODEL SED

Featuring:
Sunset's pre-formed heavy gauge stainless steel evaporator plate is the heaviest in the industry.



MILK COOLING SURFACE



ALSO GOOD USED TANKS AVAILABLE



Milk IS the real thing!

A 1st Class Team
Together For 20 Years!



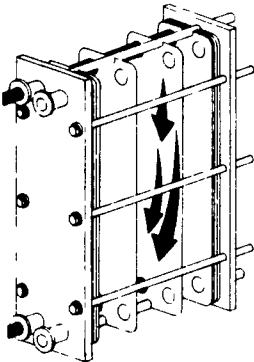
RUFUS BRUBAKER REFRIGERATION & MUELLER Dairy Farm Equipment



When you make a major purchase like a milk cooler - - buy from the folks you trust.

Authorized
MUELLER
Milk Coolers
SALES - SERVICE

Call us anytime!



Southern Service Center
468 Dry Wells Rd.
Quarryville, Pa.
717-786-1617
Vic Leininger

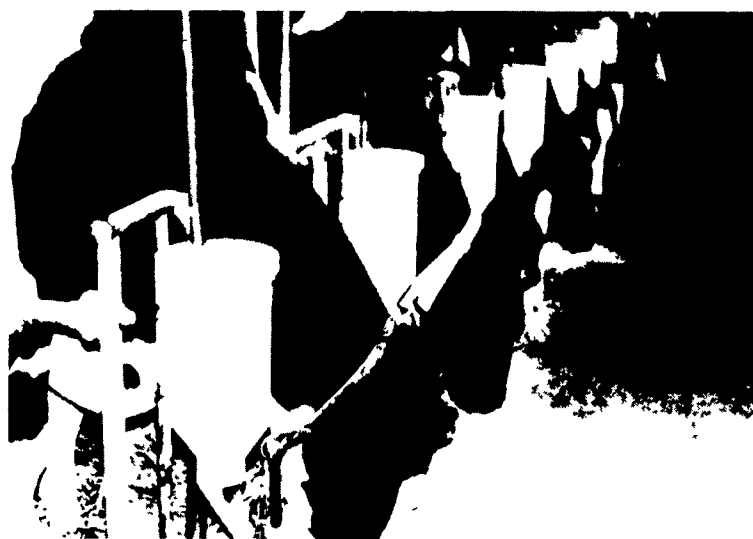
MAIN OFFICE

614 Penryn Rd.
Manheim, Pa. 17545
717-665-3525
Ken or Ed Brubaker

Northern Service Center
RD 1, Box 199
Myerstown, Pa.
717-933-4711
Ken Kopp

★ 24 Hour Service In S.E. PA, S. Jersey, Delaware, N.E. And Eastern Shore Maryland!

★ Call Today For All Your New or Used Milk Tank And Refrigeration Equipment Needs!



THE ANSWER TO LOW-LABOR MULTIPLE FEEDING WAS RIGHT UNDER OUR NOSES ALL THE TIME... AND IT ISN'T COMPUTERIZED!

It took a dairyman to invent such a perfect feeder.

GRAIN BRAIN

MULTIFEEDER BY STARLINE

We call this exciting new Starline feeder, "Grain Brain" because it "thinks for itself." Here's how it works. When you do your regular feeding, you also fill your "Grain Brain" multifeeder. Grain Brain does the rest. At the time you have preset into Grain Brain the multifeeder drop feed for each cow's next feeding. That means you go from two or three times to four or six times per day feeding with no extra labor!

A Grain Brain that will handle a 50-cow herd will cost you approximately \$3,000, complete. Grain Brain is simple, easy to operate, reliable and capable of paying for itself in less than a year. We're anxious to tell you the whole story, so see your Starline dealer soon. By the way, Grain Brain was invented by a Minnesota dairyman for his own barn. Now a lot of his neighbors have one too. Patent Pending



Building dependable equipment since 1883

10% Cash & Carry Discount On All Starline Parts

DONALD R. NISSLEY

RD #1, Willow Street, PA
(Corner of Rt. 272 S & Byerland Church Rd.)

(717) 786-7654

Full Line
Parts Department
For Starline