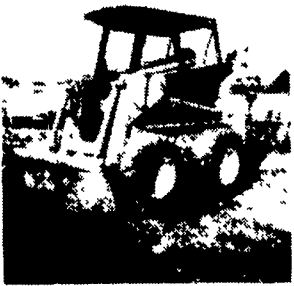


# Before You Buy A Used Skid Loader CHECK WITH US... We May Have What You're Looking For!

### CASE 1845 DIESEL



Serial No. 9841288, 1978 Model, New Paint, New 12.00x16.5 Tires, 73" Bucket. UT 1075  
**Hurry At This Price \$8,700**

### CASE 1845



Serial No. 9851580, 1980 Model, 4,360 Hrs., Lights, Aux. Hyd., 73" Bucket. High Hrs. But Taken Care Of. UT1079  
**\$8,595**

### CASE 1845 DIESEL



Serial No. 9836079, 73" Bucket, Also Choice Of Pallet Fork. Motor Rebuilt - Used Around Our Shop. UT 1024  
**\$8,900**

### FORD CLA0



Serial No. 3664, 1975 Model, 4 Cyl. Ford Gas Engine, ROPS Frame w/Lights, New Heavy Duty 60" Bucket, 7.50x15 Tires - 75%. UT 1141  
**\$3,800**

### HYDRO MAC 12C III



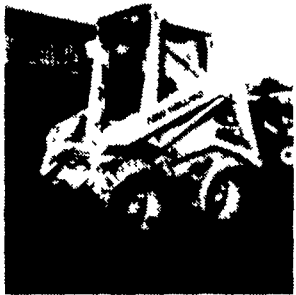
Serial No. 33229, 1979 Model, 2,100 Hrs., 40 H.P. Gas Engine, ROPS Cage w/Lights, 10.00x16.5 Tires, 60" Bucket, Also A Pallet Fork. Engine Overhauled 2 Yrs. Ago UT 1170  
**\$4,950**

### GEHL 4600



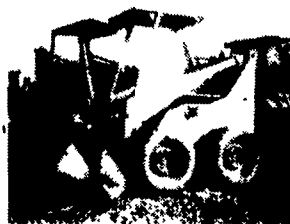
Serial No. 1781, 1982 Model, 44 H.P. Perkins Diesel, 65" Bucket, 2,893 Hrs. UT 1094  
**\$6,800**

### N.H. L325



Serial No. 479614, 1983 Model, 22 H.P., Gas Engine, 60" Bucket, Shows 578 Hrs. UT 1050  
**\$5,600**

### MITEY MAC 8A



Serial No. 3487, 1973 Model, 22 H.P. Onan Engine, 2 Buckets - 55" Material Bucket & A Dirt Bucket, 1 Manure Fork UT1140  
**\$2,350**

### HELP WANTED

*A Golden Opportunity...*

Person For Parts Dept. Farm Background, Parts Experience Preferred. Call  
**(717) 626-4705**

**IF YOU NEED IH OR CASE PARTS, CALL US - We Ship UPS, Federal Air Express And We Deliver**

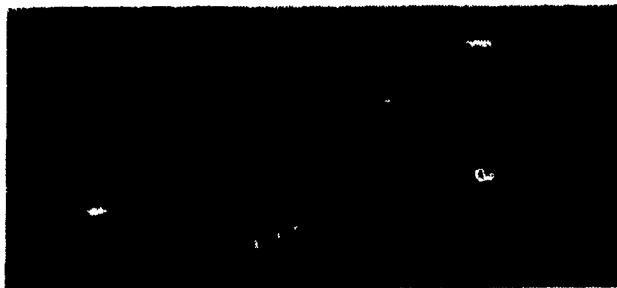
## NEW & USED EQUIPMENT

- Reconditioned John Deere A ..... Only \$1,850
- Oliver Cletrac Crawler, Mechanized Angle Dozer ..... \$1,480
- Case 1816 B Uniloader, 1979 Model, 44" Bucket, 750 Hrs. .... \$2,995
- New Int'l Snowmobile Trailer w/6x10 Tilt Bed, GVWR, 3500 Lb., 205.65R15 Tires. .... \$780
- Just Arrived! Case 586D Forklift w/Power Shuttle Transmission, 1982 Model, Approx. 920 Hrs., Hyd. Shift, Shift-Mast, Lifts 6000 Lbs., Approx. 14 Ft. .... ONLY \$15,850
- IH No. 10 Grain Drill w/Grass Seed Attachment & Good Single Disk Openers. .... \$475
- J.D. 10 Ft. Culti-Mulcher w/21 Double Spring Teeth, Outboard Transport Wheels, In Fair Condition ..... \$1595 Or Best Offer
- Bush Hog Transport 16' Disk Harrow w/Buster Bar, Spring Assist Wing Fold ..... Only \$1,950
- 6 Ft. ATI Manure Fork For Case 1845C Uniloader, UM 1031 ..... \$496
- Gehl Tandem Axle Model 350 Manure Spreader w/Hydraulic Endgate, UM 1010 ..... \$2,600
- Glencoe 12 Ft. Field Cultivator, Transport, Less Hydraulics, Pull-Type, Fair Condition...\$850 .. \$690
- New Holland Model 80 3 Pt. Round Bale Mover, Less Cylinder, UM1017..... \$385
- Starline Tank Spreader, Tandem Axle ..... \$3,650 or Best Offer
- Baker York Forklift w/8' Mast and 4000 Lb. Lift Capacity ..... \$6,800
- C50 Hyster Forklift, 12' Mast, L.P. Gas, Excellent ..... \$3,850
- Glencoe 14 Ft. Transport Field Cultivator, Less Hydraulics, 10 1/2' w/Folding Wing Sections For Easy Transporting Width, Like New, UM1056..... \$1,650
- Wetmore Grinder Blower, New ..... Only \$2,250
- MC Rotary Scythe, Approx. 6 Ft. Cut, Pull Type w/Spout To Blow Onto Wagon, Old But Good .. \$275
- Dual Tractor-Mount Loader w/Cylinders, Bucket And Mounting Kit For Ford 800 Series (No Hoses, Plumbing or Valves), Heavy Duty Style ..... Only \$1,795

### BUSH HOG MODEL 220 FLEX-WING ROTARY CUTTER

1000 PTO Hyd. Lift, 20 Ft. Cutting Width, Only 8 Ft. Transport Width, Cutting Height 2'-12", Wing Flex From 22° Down To 90° Up, Hyd. Wing, Dual Transport Wheels: No. 1790

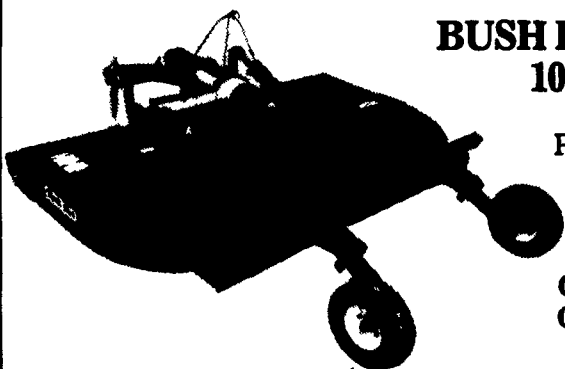
**ONE ONLY ..... \$7,995**



### BUSH HOG MODEL 3126 10'6" MOWER

Pull Type w/Hyd. Lift, Laminated Tire, 100 HP, Center Gear Box, 540 PTO

**ONE ONLY ..... \$3,790**



## TAG-A-LONG TRAILERS

Check Our New, Increased Weight Specifications  
**SAVE A BUNDLE**



### SPECIFICATIONS:

Axles ..... 2 Color ..... Yellow  
 Brake Axles ..... 2 GVW ..... 12,005 Lbs.  
 Hitch ..... 2 5/16" Ball 16 Ft. Model  
 Deck Material ... Oil treated Deck Width ..... 76"  
 2" pine Deck Height ..... 19"  
 Tires ..... 8x14.5  
 Capacity ..... 10,000 Lbs.

Removable Bolts On Fenders Are Included In Price

- **TT14** Deck Length: 14 Ft.
- **TT16** Deck Length: 16 Ft.

- Pine-treated pine wood floor
- Gooseneck jackstand
- ICC lights with Berg connector
- Dexter axles with multi-leaf spring
- Automotive 8-bolt hubs with 16" rims
- Chrome hubcaps
- Stake pockets with rub rail
- Removable hide-away ramps (fully adjustable)
- 6 ton capacity



MODEL	BRAKE AXLE	HITCH TYPE	DECK WIDTH	DECK LENGTH	DECK HEIGHT	OVERALL LENGTH	DECK MATERIAL	TIRE SIZE	CAPACITY	WEIGHT	COLOR
TT14	2	Ball	76"	14'	19"	21'	Oil treated pine	8x14.5	10,000 lbs.	4000 lbs.	Yellow

**CASH ..... \$4,495**

**INCLUDES 4 Ft. Folding Ramps**

**BINKLEY & HURST BROS. INC.**

SALES PARTS SERVICE

133 Rothsville Station Rd.  
Lititz, PA 17543  
Located 1/2 Mile North of Rothsville  
**(717) 626-4705**

Hours Mon-Fri 7 AM - 5 PM.  
Sat 7 AM - 11:30 AM  
Sun Closed - Lord's Day