

**Carroll Co. Hay**

Westminster, MD  
Tuesday, Oct. 28

Report supplied by Auction

11 loads.  
Fourth cutting Alfalfa with moisture, 106.00; Timothy, 118.00-147.50; Mixed Hay, 85.00-99.00.  
Alfalfa & Grass, fair, 102.00; Mixed Hay, good, 116.00; Wheat Straw, 1.30 bale.  
Wood, mixed Oak & Hickory, 57.50 cord.

**King's Hay**

Kirkwood, Pa.

Tuesday, Oct. 28, 1986

Report supplied by Auction

16 loads.  
Alfalfa, 98.00-121.00, alfalfa mixed 98.00-115.00, mixed hay 80.00-118.00; 3 loads straw, 98.00-102.00; 4 loads ear corn 60.00-66.00.

**Dewart Hay**

Dewart, PA

Monday, Oct. 17

Report supplied by Auction

12 loads Hay, 61.00-87.00; 1 load Straw, 70.00; 8 loads Wood, 29.00-43.00.

**Leinbach's Hay**

Shippensburg, PA

Oct. 25&28, 1986

Report supplied by Auction

26 loads.  
Alfalfa, 96.00-129.00; Mixed Hay, 75.00-123.00; Timothy, 86.00-112.00; Clover, 88.00-90.00; Straw, 64.00-74.00; Rye, 3.60 bu.; Mulch Hay, 45.00.

**New Holland Hay**

New Holland, PA

Monday, Oct. 27

Report Supplied by Auction

123 loads.  
Alfalfa, 92.00-126.00, 1 at 51.00, 1 at 165.00; Mixed Hay, 65.00-151.00; Timothy, 101.00-154.00; Stubble Hay, 30.00-70.00; Straw, 93.00-121.00.  
New Corn, 56.00-58.00; Ear Corn, 50.00-78.00; Corn Fodder, 55.00-66.00; Rye, 3.25-4.00 bu.; Oats, 1.80-2.25 bu.; Barley, 1.25 bu.

**Belleville Hay**

Belleville, PA

Wednesday, Oct. 29

Report supplied by Auction

9 loads Alfalfa, 75.00-120.00; 18 loads Mixed Hay, 60.00-100.00; 4 loads Straw, 52.50-75.00; 2 loads Ear Corn, 55.00-60.00.

**Four States Livestock**

Hagerstown, Md.

Wednesday, Oct. 29

Report supplied by Auction

SLAUGHTER: Fed Steers-Steady. Low Choice 55.00-56.00; Good 50.00-54.00; Medium 45.00-49.00. Heifers- Good 41.00-43.25; Medium 37.00-40.00. Cows- Good run, \$1.50 higher, High Yield 38.00-41.00; Average 33.00-37.00; Big Middle 29.00-32.00; Fatty Herf. 28.00-32.00; Shelly 30.00-Down. Fat Bulls- \$1 higher. Good 43.50-46.00; Medium 40.00-43.00. Veal Calves-Steady, Light Calves \$2 lower.

Choice 67.00-69.00; Good 60.00-66.00; Medium 52.00-59.00; Farm Heifers 53.00-70.00; Farm Bulls 85.00-99.00; Light Calves 47.00-52.00; Weak Calves 46.00-Down. Lambs- Few offered. Good & Medium 53.00-54.00.

STOCKER: STEERS- 300-550 lbs. Large run, steady to \$1 lower. Choice 58.00-60.00; Good 52.00-57.00; Medium 47.00-51.00; Culls 45.60-Down. Steers- 600-850 lbs. Choice 56.00-58.00; Good 51.00-55.00; Medium 46.00-50.00. Heifers- (All Weights) Choice 47.00-51.00; Good 43.00-46.00; Medium 38.00-42.00. Springing Heifers Big 600.00-800.00; Small Springers 350.00-550.00. Pigs, Hd. Mostly steady. 20-30 lbs. 27.00-30.00; 30-50 lbs. 31.00-35.00; 60-85 lbs. 42.00-52.00. Shoats By Lb. 125-185 lbs. 46.50-52.00. Slaughter Hogs- \$1 higher. 235-245 lbs. 52.75-54.75; 275-295 lbs. 50.00-51.00; 325-340 lbs. 55.00-61.00. Sows- \$3 higher. 320-485 lbs. 47.50-53.00. Bulls- Good 48.00-53.50; Medium 42.00-47.00.

Next Special Feeder Cattle Sale is November 12.

**Morrison Cove Livestock**

Martinsburg, Pa.

Monday, Oct. 27, 1986

Report supplied by auction

CATTLE 176. STEERS: H. Choice & Prime 57.50-60.50; Choice 55.50-58.75; Good 51.50-55.75;

Standard 41.50-48.75.

HEIFERS: Choice 54.00-56.50; Good 47.25-53.75.

COWS: Utility & Commercial 39.00-41.00; Cutters 34.00-36.50; Canner & Low Cutter 25.00-33.75.

BULLOCKS: Good & Choice 45.00-52.75.

BULLS: Yield Grade No. 1 39.50-46.25.

FEEDER CATTLE: Steers Good 54.00-60.00; Standard 42.00-48.50; Bulls Good 44.00-53.00; Standard 35.00-46.00; Heifers Good 50.00-54.00; Standard 37.00-45.00.

CALVES 226. Prime None; Choice 69.00-72.50; Good 54.00-61.00; Standard & Good 48.00-57.00; 90-110 lbs. 55.00-62.50; 65-90 lbs. 45.00-57.00; Holstein bulls 90-130 lbs. 82.50-110.00; Holstein heifers 90-130 lbs. 57.00-69.00.

HOGS 93. Barrows & Gilts US No. 1-2 210 lbs.-250 lbs. 54.75-55.50; US No. 1-3 210 lbs.-265 lbs. 53.50-54.00.

SOWS: US No. 1-3 46.50-50.25; Boars 40.00-43.75.

FEEDER PIGS 39. US No. 1-3 20-35 lbs. 24.50-40.00 per head; No. 1-3 35-50 lbs. 37.00-45.00 per head.

SHEEP 11. Slaughter lambs, Good 85 lbs.-95 lbs. 54.00-60.00; Sl. Ewes 17.50-26.00.

GOATS 5. 15.00-31.00 per head.

**Penns Valley Livestock**

Centre Hall, Pa.

Tuesday, Oct. 28

Report supplied by Auction  
Beef Cows: Utility and Commercial 37.25-40.50; Cutters 34.50-37.00; Canners 31.50-34.00; Shells 24.00.

Heifers: Commercial 40.00-46.25.

Steers: Good 52.50-57.85; Standard 44.50-48.50.

Bulls: Good 45.00-47.75; Standard 42.00-44.50.

Feeder Cattle: 300-500 lbs. large frame 46.00-51.00; 500-700 lbs. large frame 48.00-50.00; 500-700 lbs. small frame 44.00-48.00.

Veal Calves: Choice 70.00-76.00; Good 60.00-69.00; Standard 49.00-57.00; Utility 42.00-48.00.

Farm Calves: Bulls 68.00-84.00 Heifers 60.00-66.00.

Hogs: 50.50-54.25. Sows: 45.00-46.25.

Boars: 38.00-40.00. Goats per head: 21.00-44.00.

**ATTENTION FARMERS**

The New Way To Market Your Livestock

**HATFIELD PACKING CO. AND MOYER PACKING CO.**  
Will Receive Hogs Will Receive Cattle

At The

**BLAIR-BEDFORD BUYING STATION**

RD 1 Martinsburg, Pa

**MONDAYS** - Hogs 8 AM to 11:30 AM  
Cattle & Calves 8 AM to 3 PM

**THURSDAYS** - Cattle & Calves  
8 AM to 3 PM

- No commission or yardage fees deducted from check
- Livestock weighed and paid for immediately
- You may call our office sale day for prices

**DALE R. HOOVER - Owner**

Business 814-793-3077  
Residence 814-793-2657

**Green Dragon Livestock Sales**



Location: Ephrata RD 4. 1 mile N. on North State St., Ephrata.

**COWS COWS COWS SALE EVERY FRIDAY**

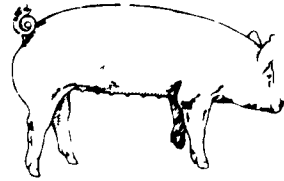
Lots of good Northern Feeder & Stockers. Slaughter Cows - Bull Steer, Veal-lamb.

11:00 A.M.-Beef Sale 200-300 each week.  
1:00 P.M.-Dairy Sale.  
7:00 P.M.-Small Animal Sale.

For Special Sales and Herd Dispersals on farm or at our barn or other market information call: Office 717-733-2444, Home 717-838-4318.

**WALTER H. RISSER, Proprietor**

All out of state and new buyers must have cash or certified check or current letter of credit from bank.



**EMERY'S BUYING STATION**

**OPEN TO RECEIVE YOUR MARKET HOGS**

AT THE GREEN DRAGON MARKET  
RD 4, EPHRATA, PA 17522  
1 MILE NORTH OF EPHRATA  
ON NORTH STATE STREET.

HOURS: MONDAY, TUESDAY, and WEDNESDAY 6:00 A.M. to 11:30 A.M.  
215-458-5677 Residence  
717-733-9648 Office

**YOU ARE PAID FOR YOUR HOGS IMMEDIATELY**

Ken & Lois Emery, Proprietors

**HAY & STRAW SALE**

12:00 Noon  
Every Wednesday  
Westend of Avondale  
at the intersection of  
Baltimore Pike and  
Route 41.

Harvey Z. Martin  
215-268-3604  
(Office)  
215-445-5303  
(Residence)

**KING'S AUCTION KIRKWOOD**

Hay, Straw and Grain Auction  
**EVERY TUESDAY**  
12:00

Located Rt 472 5 miles south of Quarryville or 6 miles north of Oxford at Shaub's Auction House

Lloyd H. Kreider

Auctioneer

AU-000513L

No out of state checks  
**ALL TRUCKERS AND FARMERS WELCOME**

**TOBACCO MEETING**

We are announcing the following meetings with news of the 1986 tobacco marketing season. Bring your questions and concerns.

**MONDAY, NOVEMBER 3rd**

Bart Fire Hall

7:00 p.m.

**WEDNESDAY, NOVEMBER 5th**

Phares Newswanger Farm

Rt. 419 between Schaefferstown & Newmanstown

Watch For Meetings In These Areas:  
Washington Boro, Quarryville, Strasburg,  
Blue Ball, White Horse & Fivepointville.

Eric R. Probst, Speaker

Garden Spot Tobacco Auction  
P.O. Box 190  
Blue Ball, PA 17506

Paradise Tobacco Sales  
P.O. Box 306, 19 Meadow Lane  
Paradise, PA 17562

**ATTENTION Dairy Buyout Farmers**

- \* Get the most for your herd
- \* Go direct - Farm to Packer
- \* Any size herd - all weights and grades of cows
- \* Trucking provided
- \* Paperwork handled quickly and efficiently

**TAYLOR PACKING CO., INC**

P.O. Box 188  
Wyalusing, PA 18853

717-746-1309