



**HESSTON CORPORATION**

**NEW EQUIPMENT SPECIALS**

- White 2-88 w/Canopy & Radials 18.4x38  
... Reg. Price \$26,500 Cash Sale Price \$22,500
- Bush Hog Soil Hog 15 Shank Flat Fold,  
32" Shank ..... \$12,300
- 7 Shank Soil Hog ..... \$ 5,200
- Dion Forage Wagon, 3 Beater Roof,  
10 Ton ..... \$ 6,000
- Kuhn FC300, 10' Disk Conditioner ..... \$ 8,500
- GMD 66HD Disk Mower ..... \$ 3,500
- Kuhn Tedders-Most Models in Stock

**NI EQUIPMENT**

- NI 486 Round Baler, 1,500 lbs. .... \$ 9,800

**HESSTON EQUIPMENT**

- Hesston Tractors 37HP-160HP. .... In Stock
- 7650 SP Harvester 250HP, 3R Auger  
Head & Pickup ..... Cash Price \$46,000
- 1010 Hydro Swing ..... \$ 7,500
- 1091, 9' Windrower ..... \$ 6,000
- 1150, 12', 9' Rolls ..... \$ 8,900
- 1050, 9' Disk Conditioner ..... \$ 8,200
- BP20 Bale Processor, DEMO. .... \$ 6,500
- 2420, 12' Disk Harrow, 22" Blade,  
Spring Gang Hangers. .... \$ 3,500
- 5530 Round Baler, 500 lbs. .... \$ 5,500
- Forage Box, 3 Beater & Roof  
10T Gear 12.5xL15. .... \$ 4,500
- 4600 Baler w/Thrower ..... \$ 9,200

**USED EQUIPMENT**

- FC 250 8' Kuhn Mower Conditioner
- Glencoe SS9 Soil Saver
- White 281, 12' Offset
- Lilliston 7-6 Rotary
- Hawk Bilt 357 Tandem Spreader
- NI 323 Picker
- Easy Trail 300 Bu. Bin Wagon
- NI 279 Cuditioner
- Coldwell 24' Batwing Rotary Mower

**STOLTZFUS FARM SERVICE**

Cochranville, PA  
215-593-2407

**For Sale Tanks - Irrigation**

New and used polyethylene storage and transport tanks - irrigation pipe and supplies. Used 1000 - 2000 - 2250 gal. tanks. See the new 1000 gal. horizontal tank with molded base, easy truck or trailer mount. New for 1987 2500 gal. tank. Used irrigation pipe 2"-3"-4"-5"-6". New and used pumps and travelers. Let us find your irrigation equipment needs for 1987. Specializing in liquid manure irrigation. We can supply your 1986-87 fertilizer needs with Alpine Plant Food, Liqui-Cal, Sulfur, Micronutrients and Biologicals. Manufacture to farm is our goal. You save when you call (717) 264-3515 or 264-7492.

**Frey's Dairy Garage**

1308 Spring View Drive  
Chambersburg, PA 17201  
Adin L. Frey - Over 20 yrs. on the farm experience with irrigation.

**Leaman Tractor Parts**

P.O. Box 250  
Willow Street, PA 17584  
717-464-2874

**Just In For Parts**

6080 Allis Chalmers front wheel drive axle, complete. Also complete rebuilt engine for same

**USED TRACTORS**

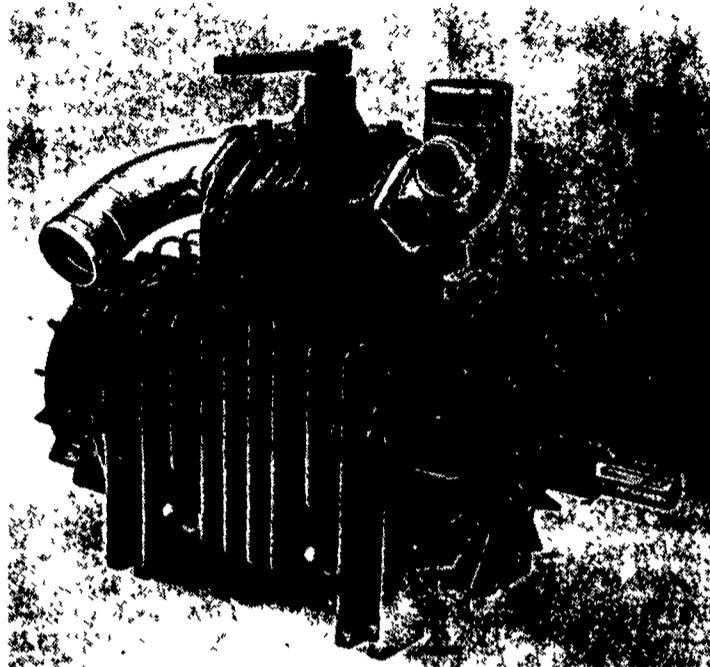
- IH 1456, 2600 original hours, excellent condition
- Farmall 856 Diesel, Wide Front, 3 Pt. rebuilt TA, good tractor
- Farmall 966, 1975 Model, Diff. Lock and Clutch Assist. Cab and Air, Good Solid Tractor
- Delivery Available Anywhere

**Quality Used Parts**

We buy and sell used parts and parts tractors. We have a good selection of quality used parts at competitive prices. Please have part no. when calling, if possible.

**1 FARM EQUIPMENT**

**JUROP R SERIES VACUUM PUMPS**  
Call Us Before You Buy

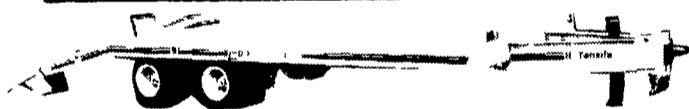


**IN STOCK**

- (1) PN8400 w/Pulley, 190 C.F.M. @ 15" H.G. .... \$975
- (1) PN 8400, 1000 R.P.M., 190 C.F.M. @ 15" H.G. .... \$950

**NOTICE: The Factory Prices Are Going UP,**  
So **PLACE YOUR ORDER NOW**  
While Current Inventory Lasts!

**Eager Beaver. 20HA**



**20 TON HEAVY AIR BRAKES 20 HA**

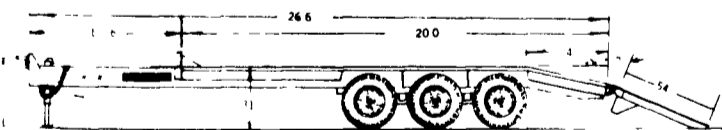
List... \$12,095

- Capacity: 40,000 lbs. at 50 MPH
- Trailer Weight: 7,050 lbs.
- Overall Length: 27'6"
- Overall Width: 96"
- Deck Length: 22'
- Deck Width: 96"
- Deck Height: 37"
- Tires: (8) 8.25 R 15 (G) Radial

**OUR PRICE \$9,250**

Plus F.E.T. \$846.00

**9 TON DECK-OVER-WHEELS 9 DOW**



9 Ton, 3 Axle, Electric Brakes, Complete Truck Wiring Harness Kit Including Brake Control.

**NEW MODEL 9 DOW**

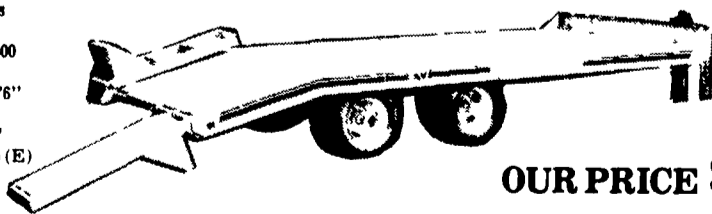
Reg. List Price, Setup....\$5,500

**OUR PRICE ONLY \$4,350**

Also Available: B9 DOW BUDD WHEEL MODEL.....\$4,550

**Eager Beaver NEW WITH ELECTRIC BRAKES! 10 Ton Heavy Duty Brakes 10HDB**

- Capacity 20,000 lbs at 54 MPH
- Trailer Weight: 5,800 lbs
- Overall Length 24'6"
- Deck Width 96"
- Deck Height: 32 1/2"
- Tires (8) 8 75x16.5 (E)
- Overall Width 96"
- Deck Length 20'



Reg. Price \$9,050

**OUR PRICE \$7,300**

**Air Brake Unit Also In Stock**

**BINKLEY & HURST BROS. INC.**

SALES PARTS SERVICE

133 Rothsville Station Rd. Lititz, PA 17543

Located 1/2 Mile North of Rothsville  
(717) 626-4705

Hours Mon-Fri 7 AM - 5 PM,  
Sat 7 AM - 11:30 AM  
Sun Closed - Lord's Day

**DICKEY-john DjGMT Grain Moisture Tester**



The DICKEY-john Grain Moisture Tester measures moisture content automatically. You don't have to pre-weigh the sample. There are no meters to read, no dials to set, and no thermometers to use. As soon as you pour in the grain sample the testing sequence begins. A digital readout is displayed when the proper weight of the sample has entered the test chamber. The readout is cancelled for temperature at the touch of a pressure sensitive switch. Models are available with direct readouts for corn, soybeans or wheat, and adhesive conversion charts are provided for other grains.

- **GRAIN TESTER** Remanufactured, New Warranty, In Stock ONLY..... **\$169.75**
- **FORAGE MODEL** List...\$310 CASH..... **\$215**

**Simple, four-step operation**

**1** Place the tester on a steady level surface. Then lift the protective cover up and slide it down out of the way.

**2** Use the sample cup to pour grain into the testing cell. Pour slowly and steadily taking about eight to ten seconds to empty the sample cup. A readout will appear automatically.

**3** Wait at least fifteen seconds. Then press the temperature compensation switch for a direct readout of the moisture content of the grain listed on that switch. Refer to the appropriate chart for other grains.

**4** Empty the tester by turning it over (if you should forget to empty the test cell, the tester will shut itself off automatically after two minutes).

**BINKLEY & HURST BROS. INC.**

SALES PARTS SERVICE

133 Rothsville Station Rd., Lititz, PA 17543  
Located 1/2 Mile North of Rothsville

(717) 626-4705

Hours: Mon-Fri 7 AM - 5 PM; Sat 7 AM - 11:30 AM  
Sun Closed - Lord's Day

**BINKLEY & HURST BROS. INC.**

SALES PARTS SERVICE

133 Rothsville Station Rd. Lititz, PA 17543

Located 1/2 Mile North of Rothsville  
(717) 626-4705

Hours Mon-Fri 7 AM - 5 PM,  
Sat 7 AM - 11:30 AM  
Sun Closed - Lord's Day