

# THE OLD FARMER'S ALMANAC

OCT. 27-NOV. 2, 1986  
Wear your sweater — it's football weather!

Harvard University established 350 years ago by act of the Massachusetts General Court, Oct 28, 1636  
Halloween Oct 31 Average length of days for the week 10 hours, 26 minutes  
Dr Jonas Salk, discoverer of the polio vaccine, born in New York City, Oct 28, 1914  
New York Stock Exchange collapsed, Oct 29, 1929  
New moon Nov 2 (Sun)  
Statue of Liberty dedicated on Bedloe's Island, New York Harbor, Oct 28, 1886  
Speech was given to man to disguise his thoughts



**Ask the Old Farmer:** I have several pieces of luggage that have been stored in the basement. How can I get rid of the musty smell that they picked up while in storage? S S, Franklin, Mich  
*Vacuum the luggage first, then rub with a solution of half rubbing alcohol, half water. Try this first on an area that won't show, in case it changes the color of the material. Air and sun will also help get rid of the odor.*

**Home Hints:** To remove stains from silverware, cover overnight with sour milk, next day rinse with cold, then warm water and dry

## OLD FARMER'S WEATHER FORECAST

**New England:** Week begins with cold temperatures, possible showers and snow north, midweek northeaster, end of week rainy and seasonably cold  
**Greater New York-New Jersey:** Beginning of week partly sunny, some rain, with cool temperatures, offshore tropical storm midweek, with heavy rain possible, end of week rainy and cold  
**Middle Atlantic Coastal:** Week begins cloudy with cool temperatures, midweek rain, heavy east and north, end of week continued rainy and cold  
(All Rights Reserved Yankee Publishing Incorporated, Dublin, NH 03444)

## New Holland Horses

**New Holland Sales Stables**  
New Holland, PA  
Monday, Oct. 20, 1986  
Report supplied by auction  
Registered receipts of 322 head of horses, mules and ponies.  
Market: lower.  
Local

Registered Horses 556.00-685.00.  
Driving Horses 250.00-1025.00.  
Riding Horses 150.00-450.00.  
Lightweight Killers 125.00-225.00.  
Heavyweight Killers 275.00-385.00.  
Mare Ponies 35.00-70.00.  
Colts 10.00-20.00.  
Gelding Ponies 35.00-70.00.  
Larger Ponies 100.00-150.00.

## ATTENTION GRAIN PRODUCERS

You Can Sell Your Corn By Locking In The Basis And Pricing It Anytime Prior To Delivery

Call For Updates On Price And Basis:  
717-761-2740  
800-382-1356



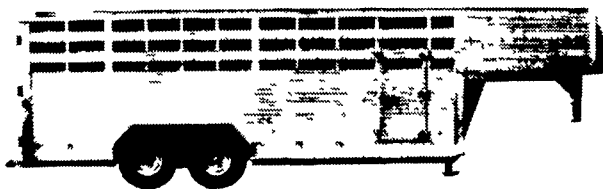
**CFS**

PFA COMMODITY FUTURES SERVICE, INC.

**TRANS EQUIPMENT, INC.**  
LANCASTER COUNTY  
Rte 272, P O Box 415, Brownstown, PA 17508  
717-859-2093

## ALL ALUMINUM MINI "B" GOOSENECK TRAILER

BUILT WITH THE SAME PARTS AS THE BIG "CIRCLE B" TRAILERS.



### STANDARD FEATURES

- Approx. 40% Lighter Than Steel
- Corrugated Aluminum Tread Floor
- Full Opening Divide Gate
- Full Opening Rear End Gate with 1/2 Slide
- 7" Wide x 6" Inside Height
- Walk-in Side Door

New & Used Trailers In Stock

Manufactured by the "Big" Trailer People Possum Belly - Lite Liner - Livestock Trailers

**BARRETT TRAILERS, INC.**

## Shippensburg Wholesale Produce Auction

(Leinbach's)  
Shippensburg, PA  
Tuesday, Oct. 16, 18 & 21  
Report Supplied by Auction  
Price quotes are only #1 and Firm Produce.  
Apples 1.50-3.25 1/2 bu.  
Broccoli 3.00-3.25 bu.  
Cabbage 4.00-6.30 50 lbs. (Chinese).  
Cauliflower .15-.64 hd.  
Gourds 1.50-3.25 1/2 bu.  
Indian Corn .30-.85 bunch of 3; fingers .25-.65 bunch of 3.  
Mums .50-1.95 pot.  
Peppers lg. 4.50-9.25 bu.; med. 3.00-6.10 bu.  
Potatoes 3.00-4.75 50 lbs.  
Pumpkins face .04-.05 1/2 lb., .20-1.50 ea.; neck .10-.80 ea.; jack-be-little 15.00-28.00 bu.  
Squash 1.75-2.50 1/2 bu.  
Sweet Potatoes 4.25-6.25 1/2 bu.  
Tomatoes lg. #1 9.00-15.00 25 lbs.; med. #1 4.50-7.00 25 lbs.  
Turnips 2.75-5.00 1/2 bu.

## Morrison Cove Livestock

Martinsburg, Pa.  
Monday, Oct. 20, 1986  
Report supplied by auction  
CATTLE 177. STEERS: H. Choice & Prime None; Choice 57.00-60.00; Good 52.00-55.50; Standard 40.00-48.75.  
HEIFERS: Choice 54.00-56.50; Good 47.25-52.00.  
COWS: Utility & Commercial 36.50-40.00; Cutters 34.00-37.50; Canner & Low Cutter 24.50-33.50.  
BULLOCKS: Good & Choice 45.00-50.25.  
BULLS: Yield Grade No. 1 41.50-48.75.  
FEEDER CATTLE: Steers Good 53.00-61.50; Standard 39.00-48.50; Bulls Good 45.00-52.50; Standard 36.00-47.50; Heifers Good 45.00-52.00; Standard 30.00-43.00.  
CALVES 227. Prime None; Choice 60.00-75.00; Good 55.00-62.00; Standard & Good 50.00-61.00; 90-110 lbs. 57.00-65.00; 65-90 lbs. 45.00-58.00; Holstein bulls 90-130 lbs. 92.50-132.50; Holstein heifers

90-130 lbs. 58.00-67.50.  
HOGS 83. Barrows & Gilts US No. 1-2 215 lbs.-255 lbs. 55.00-57.25; US No. 1-3 210 lbs.-260 lbs. 54.00-55.50.  
SOWS: US No. 1-3 46.50-50.25.  
FEEDER PIGS 24. US No. 1-3 20-35 lbs. 24.50-31.00 per head; No. 1-3 35-50 lbs. 34.00-41.00 per head.  
SHEEP 17. Slaughter lambs Choice 90 lbs.-110 lbs. 57.00-61.00; Good 70 lbs.-85 lbs. 52.50-58.75; Sl. Ewes 15.00-29.00.  
GOATS 6. 22.00-47.00 per head.

## East Coast Carlot Thursday, Oct. 22, 1986

Report supplied by USDA  
Compared to Tuesday's close: Choice and Prime special fed veal generally steady in limited test. Good and choice boning veal steady to 3.00 higher; inshipped untested. Choice and Prime lamb not established, firm undertone.  
Choice & Prime (Special Fed)  
Hide On 100 Head  
220-280 lbs. ltd. 157.00, generally steady.

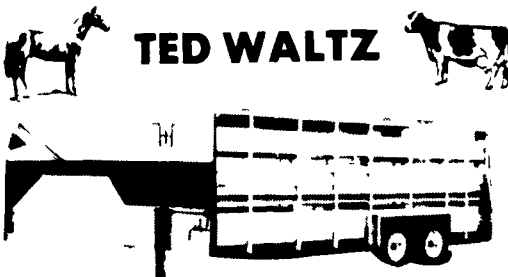
Good and Choice Boning Type-Hide On Northeastern Suppliers  
375 Head  
65-75 lbs. 86.00-91.00, steady 3.00 higher; 55-64 lbs. 84.00-89.00; 45-54 lbs. 82.00-87.00; 35-44 lbs. 80.00-85.00; 34 lbs. dwn. 78.00-83.00.  
Inshipped  
No sales reported.

## BUYING SOYBEANS EAR & SHELLLED CORN

Contract or Spot Purchase  
Futures and Options Trading Services Available

## MARTIN GRAIN

Business 717-653-1085  
Residence 717-653-5935  
84 E. Main St.  
Mt. Joy, Pa. 17552



## Livestock Hauling Local and Long Distance

111 Little Washington Rd  
Downingtown, Pa. 19335  
Call Evenings (215) 942-3324

## LOUIS LYONS & SON

Consign your cattle and hogs, feeder pigs & calves to Louis Lyons & Son. They offer choice service, excellent sorting & marketing of your livestock.

Charles Diller, Manager  
Phone 394-7915  
Burnell Siegrist - Buyer & Seller  
Phone 717-626-8653

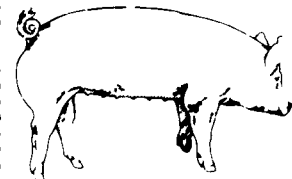
Experienced Personnel Immediate Weighing

## CRIPPLED AND DISABLED

Cows, Steers & Bulls For Slaughter Under USDA Inspection

Call Wayne Taylor  
717-866-6289  
215-286-9400

Lebanon, Berks, Lancaster & Chester Counties



## EMERY'S BUYING STATION

OPEN TO RECEIVE YOUR MARKET HOGS  
AT THE GREEN DRAGON MARKET  
RD 4, EPHRATA, PA 17522  
1 MILE NORTH OF EPHRATA ON NORTH STATE STREET.

HOURS: MONDAY, TUESDAY, and WEDNESDAY 6:00 A.M. to 11:30 A.M.  
215-458-5677 Residence  
717-733-9648 Office

YOU ARE PAID FOR YOUR HOGS IMMEDIATELY

Ken & Lois Emery, Proprietors

FRIDAY, NOVEMBER 21 ON THE FARM MONTHLY

## BRED GILT SALE

1:00 P.M.  
Sale To Start Promptly Every 4 Weeks  
Located 18 miles south of Lancaster, Pa., 6 miles south of Quarryville, take Rt. 272 to Little Britain, turn north, follow Little Britain Road to Jackson Road, right. 2nd farm, OR take Rt. 222, out of Quarryville to Cedar Hill Road to Little Britain Road to Jackson Road, left. Watch for sale arrows.

50 to 60 Head  
WHITE DIAMOND GILTS  
Here Now a new cross again. Large White & Landrace, first generation true F-1 gilts. Parent stock originated from Lieske Bros. Minnesota. Very productive in litter size and feed conversion.

Vaccinated for Lepto, Erysipias, Rhinitis, E'Coll, Pasteurella

Hand mated with Breeding Dates

Local Truck Available  
No Hogs Sold On Commission

JOHN B. STOLTZFUS  
R.D. 1, Kirkwood, Pa.  
Abe Diffenbach, Auctioneer AU225L

NEXT SALE DATE DECEMBER 19, 1:00 P.M.