



SANFORD G. LEAMAN, REALTOR

717-569-4264
Auctioneer
ESTATES • APPRAISALS • LIQUIDATIONS
101 White Oak Dr., Lancaster, PA 17601

★ NEW LISTINGS ★

UNION CO
Modern dairy farm w/60 comfort stalls box stalls 2 modern implement sheds 840 gal bulk milk tank and pipeline milking system. This fine farm has 237 acres w/180 acres of excellent tillable land. A large 7 room brick house is in excellent shape. Call Sandy Leaman for an appointment to see

PERRY CO
99 acres of nice woodland price reduced. Ideal for hunting camp near state game lands. Stream and springs on property. Call Ken Young at 717 426 1098

UNION CO
White Deer Valley is the home of this exc. dairy farm with 130 ac tillable 52 stanchions bunk feeder ex limestone soil hay barn and brick farmhouse with 2 baths and 5 bedrooms. Call Fred Clark (717) 523 7201

JUNIATA CO
Hunter! 60 acres woodland on Shade Mountain bordering state game land. Streams electricity another 40 acre tract available. See it today and own it for this years hunting season. Call Shirley at 717 242 1774

Beef farm ideal for an investor since the neighbor has been farming the land for many years and wishes to continue. The modern farmhouse is in exc. condition with large rooms. A buy at \$199 900. Call Shirley Waterman at (717) 242 1774

22 acres at Licking Creek with barn that could easily be turned back to a dairy. This farm presently has room for 350 hogs. Call Dick Crawford at 717 734 3673

PERRY CO
110 ac dairy with 24 stanchions and 30+ free stalls. There is approximately 100 acres for rent on adjoining farm. This farm is in a high state of cultivation. Home has recently been modernized insulated and is in excellent condition. This beauty is priced at \$219 500. Call Sandy Leaman (717) 569 4264

LEBANON CO
69 acre modern dairy. Excellent facilities for 80+ milking operation. Excellent stone house built in early 1800s. Excellent limestone soil. Ideal for investor as owner would lease back. Fall or spring possession whatever you desire. Call Sandy Leaman at 717 569 4264

Horse farm or just nice country living for the executive. The modern farm house has been renovated and modernized and has a beautiful family room and in ground pool. Call Ken Young at 717 426 1098

139 acres with double 3 milking parlor 66 88 **SOLD** bulk tank and large home beautiful setting. Call Sandy Leaman at (717) 569 4264

LANCASTER CO
10 and 11 ac farms and farmettes at \$225 000 and \$179 900. Ready for new owners. Excellent horse farms bed and breakfast or Gentleman estates. Call Sandy Leaman at (717) 569 4264

COLUMBIA CO
164 acre Beef farm but could be renovated for dairy. 142 acres tillable large contoured fields very good producing soil. A very nice father/son operation. There is additional land nearby that can be rented also. The buildings are in good condition but need up dating. This farm has great potential. Call Pete Zeisloft at 717 437 2305

SNYDER CO
Near Selinsgrove is a very modern dairy farm with lots of potential to expand to a much larger size. There are presently 231 acres 4 silos 2 complete sets of buildings in excellent condition. The farm sits just west of Selinsgrove and has development potential. These fine farms could easily be split and sold as 2 farms and have 99 acres on one and 131 on the other and both be dairy. Call Sandy Leaman for both of these fine listings at 717 569 4264

DAUPHIN CO
Here is a rare opportunity to buy a fully equipped 137 acre dairy farm with a high producing herd included. Two year old dairy barn and six year old house in excellent condition could make this your dairy showplace. Don't miss seeing this property. Buy it your way fully equipped or bare. We will even sell you just the new barn outbuildings and 132 acres. If interested call Pat Kauffman at 717 896 8958

BRADFORD CO
150 acre ideal for a veal or beef operation. Barn 14x144 Level high production land pond large home silo and room for an air strip. A great place for a very reasonable price. Call Sandy (717 569 4264) or Barb LaMont (717 297 2619)

Our Staff Welcomes New Agent.
Dan Messner taking care of Berks, Chester and Montgomery Counties. 215-942-4004

"We Serve Your Farm Needs"
Call

- YORK ADAMS SOUTHERN CUMBERLAND AND FRANKLIN COUNTIES CALL JERRY K STERN AT 717 246 1471
- SOMERSET CAMBRIA BLAIR HUNTINGDON AND FULTON COUNTIES CALL ERNEST HOLLISOPPLE AT 814 479 7682
- ANY COUNTY CALL SHIRLEY WATERMAN 717 242 1774
- UNION AND MONTOUR COUNTIES CALL FRED CLARK AT 717 523 7201
- COLUMBIA AND NORTHUMBERLAND COUNTIES CALL PAUL PETE ZEISLOFT AT 717 437 2305
- LANCASTER COUNTY CALL KEN YOUNG 717 426-1098 OR SANDY LEAMAN 717 569 4264
- DAUPHIN COUNTY CALL PAT KAUFFMAN 717 896 8958
- BRADFORD COUNTY AND LYCOMING COUNTY CALL BARBARA LAMONT 717 297 2619
- JUNIATA PERRY FRANKLIN COUNTIES CALL RICHARD B CRAWFORD 717 734 3673

**SHEETZ REAL ESTATE
RAY N. WILEY INC.**

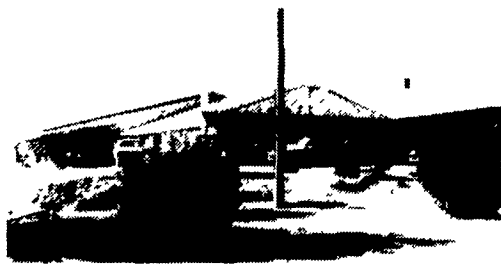
323 W. Main St.
Mount Joy, PA

CALL 653-1481

FARM LISTINGS NEEDED

Farm Salesman - Eugene Kreider

**What Do You Want In A Dairy Farm?
Ck. These 10 Pts. & More.**



#1 I'll bet it is a good cash flow!! - 132 Freestalls & very nice area in old bank barn for young cattle.

#2 A convenient set up surely would help! - Double 8 Parlor w/8 DeLaval units.

#3 How about adequate capacities in: - Bulk Tank = 1500 gal. w/plenty of room for another one. - 20x64 Weaver Star Bottom Unloader & 3 trenches

#4 Certainly you will want something you can be proud of after you put in all that hard work. - Ck out that beautiful 7 BR House. "Presently used as two units"

#5 You do want a location that gives you & your friends good access - Just off Rte. 22-78 near the truck stop on Rt. 645.

#6 - We can't forget productivity! He has a trophy for over 200 bushel of corn/ac.

#7 This one has four residential units in three separate bldgs. all in good shape, along with 359 acres making it large enough for a partnership.

#8 How about a broker who will represent it like it is?

Oh Shucks! Why don't you just call me for the other two points.

MAHLON OBERHOLTZER

Real Estate Agency

Smoketown, Pa. 17576

717-392-1177

FOR SALE BY OWNER

167 acre northeast Pennsylvania modern dairy farm. Mostly tillable w/2 houses, nearly new free stall & dry cow facility, 4 silos w/unloaders, automatic feeding, double 6 totally automated parlor, 1500 gal. bulk tank, large new machine shed, 150 head of cattle, some machinery included.

717-222-4432

**PENNSYLVANIA FARMS
FOR SALE**

40 ACRE HOG FARM:

R.D. #1, Myerstown "near Frystown", Berks Co., PA \$125,000

2 1/2 story frame farmhouse, 38'x80' implement shed, 44'x135' fattening barn, two modern hog farrowing houses 24'x60' and 24'x48', ten ton feed bin and seven ton feed bin. Private setting. Call Nelson Ebersole 717-867-5221.

109 ACRE FARM:

R.D. #3 Annville, N. Annville Twp., Lebanon Co., PA \$250,000

Older 2 1/2 story log home with attached summer house with walk in fireplace, bank barn, sheep shed, poultry house, corn barn and implement shed. About 80 acres tillable. Creek frontage and road frontage. Will sell buildings and 82 acres for \$200,000. Call Nelson Ebersole 717-867-5221.

40 ACRE GENTLEMAN FARM:

Lebanon County, PA \$129,900

3 bedroom modern ranch home, bank barn and hog barn, macadam lane, private setting. Open land and wooded near thousand of acres of State Game Lands. This farm is located on Obie Road. Partly in South Lebanon Twp. and partly in Heidelberg Twp. Call Pat Dundore 717-272-8331.

10 ACRE CHICKEN FARM:

Hummelstown, Dauphin Co., PA \$179,000

Country place with 40'x250' two story broiler house with Pennfield Farms contract, 27'x58' workshop building, 8 acres fenced in pasture, modern ranch home. Call Francis Ulishney 717-272-2989.

2,230 ACRE GAME PRESERVE:

Lycoming County, PA \$1,100,000

Two hunting lodges, some cropland, 22 miles of well maintained gravel roads. Call Nelson Ebersole 717-867-5221

CALL OR WRITE FOR A DESCRIPTIVE BROCHURE

**SUBURBAN REALTY
FARM DIVISION**

30 W. Main St., Annville, PA 17003
Phone 717-273-9358
717-867-5221 717-867-4487



BERKS CO.

• 140 Acre Farm features lovely 2 1/2 story stone home, modern kitchen, dining room, living room, center hall 4 large bedrooms & bath, large bank barn, 2 large machine sheds, small horse barn, large storage bins, gently rolling land with pond & stream \$460,000

• 70 Acre farm features 50,000 bird automated high rise laying house with packing room, large steer barn, corn cribs, lovely 2 1/2 story stone home with kitchen, dining room, living room, family room and 4 bedrooms, 2 baths \$550 000

OTHER FARMS AVAILABLE

Please Call and Tell Us Your Preference

PAUL M. LONGACRE

Rt. 100 Hereford, PA 18056

Ph: 215-679-5919

BRADFORD COUNTY

• 5 acre Dairy Farm Modern 74 stall dairy barn Bulk tank, steel pipe line, barn cleaner 20x32 Harvestore silo and 20x60 concrete silo Manure storage Modern Ranch home with 4BR's, Kit, DR LR Bath and Den \$145 000 Also second house available

• 500 Acre Dairy Farm 450 tillable features 184 freestall dairy barn 125 stall heifer barn double-8 milking parlor, two 1,000 gal bulk tanks, two 100' bunk feeders, three 24x60 and one 20x60 concrete silos w/unloaders, lovely 4 BR home w/kitchen LR FR office, den, laundry & bath 2nd home 3 BRS & bath Spring fed pond & much more! Call for details, \$650 000 Cattle & machinery available

• 188 Acre 130 T Dairy farm with large double 13 room house, 3 car garage, 86 stall barn, 1,000 gal tank, pipeline milker, barn cleaner, large machinery shed, \$165 000 Cattle & machinery available under separate contract

SUSQUEHANNA COUNTY

• 565 Acre dairy farm Features 145 stall barn, heifer barn large machinery shed, 2 1/2 story house with kitchen dining room, living room, office, family room, laundry 3 bedrooms 1 1/2 baths 2nd House Modern 3 bedroom with kitchen dining room, living room and bath Apartment with modern kitchen, living room, dining room, 3 bedrooms 1 1/2 baths 3rd House New 2 bedroom, kitchen, living room and bath \$750,000

POTTER COUNTY

• 116 Acre, hunting ground 30 acres open, balance wooded, borders 2 roads & river Possible Owner financing \$50,000

LEHIGH COUNTY

• 100 Acre dairy farm, 80 tillable, features 90 cow free stall barn w/freshening area and bulk feeder, 36 stall milking barn w/pipeline milker, bulk tank, barn cleaner Lovely 2 1/2 story home, large kitchen, DR, LR, laundry, 5 BR, 2 baths, full attic & basement, (2) 20x60 Harvestore silos, 20x80 concrete w/unloader Stream & pasture, level land, \$300,000

TIOGA COUNTY

• 800 Acre Dairy Farm 400 T 2 very good, lovely homes 83 stall dairy, barn Steel pipe line, 1000 gal tank and barn cleaner (2) 16x60 and (1) 14x40 silos with unloaders Large heifer barn \$365,000 Full line of machinery and cattle available

• 122 Acre, 100 T dairy farm, 47 tie stalls with 24 free stalls, 800 gallon tank, barn cleaner, pipeline milker, 20x60 concrete silo with unloader, good house with kitchen, dining room, 2 living rooms 3 bedrooms and bath \$110 000

• 126 Acre farm, 70 T, 45 pasture balance wood land Land only Near above farm \$65 000

SCHUYLKILL COUNTY

• 234 acre woodland tract, joins state gamelands, borders Rt 81 & secondary road, Pine Grove area, good hunting area, call for details, \$175,000