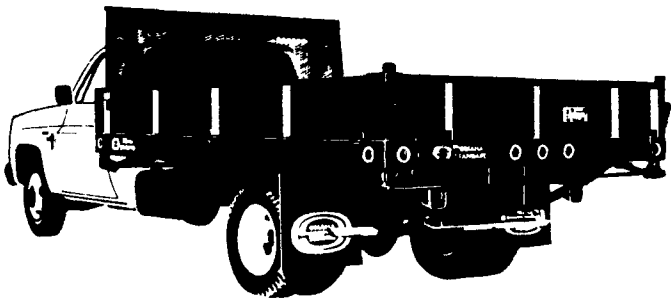


Tri-Loader..

European-style Contractor Body



The European-style Tri-Loader body is an extremely versatile piece of equipment. It features 14" hinged sides which fold down or remove completely for loading from either side, a double-acting tailgate, hinged top and bottom for dumping and spreading operations with forward controls. Swaged (indented) 3-light cluster in rear outtrail for better light protection and appearance. Heavy duty steel bulkheads with full width mesh windows combine maximum protection and visibility. The rugged 96" wide platform offers maximum payload and is available in wood, smooth steel, treadplate steel or steel over wood flooring.

Available at:

FARMERSVILLE EQUIPMENT INC.

RD 4, East Farmersville Road
Ephrata, PA 17522
Located in the Village of Farmersville,
Lancaster County
717-354-4271

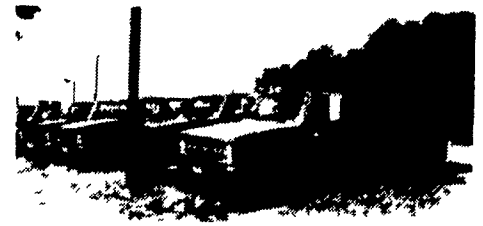
Omaha Standard



**HUNDREDS & HUNDREDS OF TRUCKS IN STOCK
SALES AND LEASING**



Grumman Olson, Union City,
American Cargo, Hi Cabs &
Step Vans



Dump Truck, Stake Bodies,
Complete Line Of Chevy Pick-
ups including 6.2 Diesels, Cab
& Chassis and Med. Duties.

GOOD USED TRUCKS

1985 Chev K-20 H.D. Pickup
1985 Ford Extended Cab, 4 Spd., 6 Cyl.
1985 Chev C-20 Heavy Duty 4x4, Diesel
1983 Chev C-10 Diesel, 4 Spd.
1984 Chev Beauville Van Loaded

1981 GMC 1 Ton 454 4 Spd
w/9 Ft. Stake
1981 Suburban Silverado, Loaded
1980 Chev 4x4, V8, 4 Spd.
1979 Chev. 4x4, V8, Automatic
1978 Suburban Silverado, w/454 Engine

Over 250 New & Used Trucks In Stock For Immediate Delivery

NOBODY BUT NOBODY UNDERSELLS...

LARRY MURPHY CHEVROLET

(TRUCK CENTER)

1 Mile South of Park City, Old Harrisburg Pike
Lancaster, PA

717-397-0601

717-397-0601

Mark VII - Pickups - Broncos - Bronco II - Stake Body - Crew Cab -

SHEEHY FORD LINCOLN MERCURY INC.

For All Your Farming Transportation Needs Through The F800 Series

BRONCOS DIESEL PICKUPS CHASSIS CAB CARGO VANS 4x4 RANGERS PICKUPS
BRONCO II SUPER CAB CREW CAB STAKE BODY BOX VANS XLT CUSTOM VANS



9-9 Daily
9-5 Sat.
717-272-7671

SHEEHY HOTLINE 717-272-7671

Unless This Emblem Is On Your Car Or Truck You Probably Paid Too Much

SHEEHY LEBANON

Parts Dept. Open
Daily 8-5
Sat. 8-12
717-273-8168*

20th & Cumberland St., Lebanon

NOTICE

**150 LEFT OVER
TRUCKS**

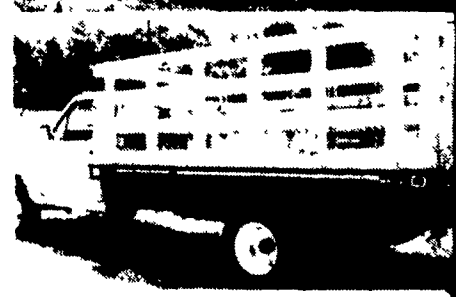
THOUSANDS OF DOLLARS IN
DISCOUNTS WILL BE GIVEN AWAY
BY SHEEHY

*500 Rebate On Manual Trans.
*300 Rebate On Automatic Trans.

All F150 Thru F350.

Good Until 10/31/86

* Parts Hot Line 800-227-0272



Tempo - Cougar - Continental - Town Car - 4x4 - Box Van - Rangers -

Custom Vans - XLT - Grand Marquis - Marquis -

Lynx - Topaz - Diesel Pickups - Mustang - T Bird