

Chambersburg Hay

Chambersburg, PA
Thursday, Oct. 23
Report Supplied by Auction
7 loads.
Two loads Alfalfa, 77.00 and 108.00; 4 loads Mixed hay 80.00-121.00; 1 load Barley Straw, 32.50.

Belleville Hay

Belleville, PA
Wednesday, Oct. 22
Report supplied by Auction
10 loads Alfalfa, 50.00-132.50; 12 loads Mixed Hay, 50.00-112.50; 6 loads Straw, 60.00-75.00; 3 loads Ear Corn, 47.50-72.50.

Leinbach's Hay

Shippensburg, PA
Tuesday, Oct. 18-21, 1986
Report supplied by Auction
32 loads.
Alfalfa, 60.00-125.00; Mixed Hay, 45.00-112.50; Timothy, 55.00-99.00; Straw, 59.00-70.00; Ear Corn, 57.00-72.50; Oats, 1.20 bu.
Rye Seed, 3.55 bu.

Keister's Hay

Middleburg, PA
Tuesday, Oct. 21
Report supplied by auction
22 loads of Hay. Alfalfa, 100.00; Mixed Hay, 65.00-100.00; 2 loads Straw, 75.00-82.50; 7 loads Ear Corn, 55.00-66.00; 1 load Oats, 1.40 bu.

Peoria Cattle

Thursday, Oct. 23, 1986
Report Supplied by USDA
Compared with last week's close slaughter steers closed steady to .50 higher, instances 1.00 higher; slaughter heifers fully .50 higher, instances 1.00 higher. Cows closed 1.00 lower. Bulls steady to firm in light test. Bulk of supply Monday with not enough sales of any class Wednesday for a market test. Supply mainly good to average choice slaughter steers and heifers with 6% cows. Estimated receipts this week about 1600 as compared with actual receipts of 1332 a week ago and 1512 a year ago.

SLAUGHTER STEERS: Choice 2-4, mostly 3 1050-1250 lbs. 59.50-60.50, couple loads 60.75-61.00; 975-1050 lbs. 58.00-59.50. Mixed good and choice 2-3 1000-1200 lbs. 57.00-58.50. Good 2-3 900-1100 lbs. 55.00-58.00. Package mixed good and choice 2-3 holsteins 1265-1300 lbs. 52.00. Load standard and good 2-3 holsteins 1065 lbs. 47.00.

SLAUGHTER HEIFERS: Choice 2-4, mostly 3 95-1150 lbs. 58.50-60.00, load mostly 2-3 60.50; 875-950 lbs. 57.50-59.00. Mixed good and choice 2-3 900-1100 lbs. 56.50-58.00. Good 2-3 800-1000 lbs. 54.50-57.50.

COWS: Cutter and boning utility 1-2 33.00-36.00, few high dressing 36.00-38.00.

BULLS: YG 1-2 1500-2020 lbs. 44.50-48.25.

Omaha Weekly

Thursday, Oct. 23
Report Supplied by USDA
Slaughter steers and heifers trended steady-.50 lower through the week, with the most decline on

Lancaster Farming, Saturday, October 25, 1986-A7

Heifers. Demand proved good early in the season, but narrowed somewhat at midweek when wholesale beef prices declined. Overall finish continued attractive. Cows and bulls steady.

Estimated 5 day receipts 6,700; actuals last week 6,605; year ago 6,946. Steers comprised 39 percent of the week's receipts; Heifers 36 percent; cows 6 percent; feeders 18 percent.

SLAUGHTER STEERS: At the close, choice 2-4 1100-1300 lb. 59.00-60.50. Mixed Good and Choice 2-3 1050-100 lbs. 58.50-60.00. Good 56.00-58.50.

SLAUGHTER HEIFERS: Choice 2-4 975-1100 lbs. 59.00-60.00. Mixed Good and Choice 2-3 925-1050 lbs. 57.00-59.00. Good 55.00-57.00.

Average of LS 214 detailed quotations for 900-1100 lb. choice steers 59.92; 1100-1300 lbs. 60.50. Average cost steers 60.37, average weight 1170 lbs.; as compared 59.96 and 1205 lbs. a week ago. Average cost heifers 59.57, average weight 1064 lbs.; as compared 59.37 and 1064 lbs. a week ago.

SLAUGHTER COWS: Cutter

and boning utility 33.50-36.50, few high dressing to 38.00. Canner and low cutter 31.50-34.00.

SLAUGHTER BULLS: 1-2 1200-2100 lbs. 41.75-45.25.

Joliet Weekly

Thursday, Oct. 23
Report supplied by USDA
Sales for this week 600; a week ago 488; a year ago 1413. Slaughter Steers and Heifers ended the week .50 to 1.00 lower.

SLAUGHTER STEERS: Choice 2-4 1100-1250# 60.50-62.00; load 62.50, few mixed good and choice 2-3 1050-1200# 58.00-60.00.

SLAUGHTER HEIFERS: Choice 2-4 950-1100# 59.00-61.00, mixed good and choice 2-3 850-1050# 57.00-59.50.



Green Dragon Livestock Sales

Location: Ephrata RD 4. 1 mile N. on North State St., Ephrata.



COWS COWS COWS SALE EVERY FRIDAY

Lots of good Northern Feeder & Stockers. Slaughter Cows - Bull Steer, Veal-lamb

11:00 A.M.-Beef Sale 200-300 each week.
1:00 P.M.-Dairy Sale.
7:00 P.M.-Small Animal Sale.

For Special Sales and Herd Dispersals on farm or at our barn or other market information call: Office 717-733-2444, Home 717-838-4318.

WALTER H. RISSE, Proprietor

All out of state and new buyers must have cash or certified check or current letter of credit from bank.

ATTENTION FARMERS

The New Way To Market Your Livestock

HATFIELD PACKING CO. AND MOYER PACKING CO.
Will Receive Hogs Will Receive Cattle

At The

BLAIR-BEDFORD BUYING STATION
RD 1 Martinsburg, Pa

MONDAYS - Hogs 8 AM to 11:30 AM
Cattle & Calves 8 AM to 3 PM

THURSDAYS - Cattle & Calves
8 AM to 3 PM

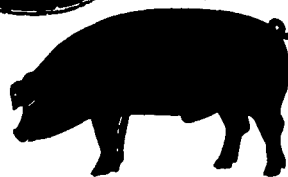
- No commission or yardage fees deducted from check
- Livestock weighed and paid for immediately
- You may call our office sale day for prices

DALE R. HOOVER - Owner

Business 814-793-3077
Residence 814-793-2657



GWALTNEY of SMITHFIELD, LTD.



RECEIVING HOGS:

LANCASTER COUNTY FARMERS

MONDAYS: McCoy's Branch Office, Bareville
WEDNESDAYS: (Next to Bawells Butcher Shop)
& FRIDAYS: on Butler Rd. 717-656-9668

TUESDAYS: B & R Cattle
THURSDAYS: Marietta

717-426-3258

YORK COUNTY FARMERS

MONDAYS: Stewartstown
717-993-2564

TUESDAYS: Thomasville

717-792-2248 or 9836

Contact for information:

Ed Herrmann, 717-284-3203
or Charlie Kauffman, 215-593-5674
Future forward contracts available

HAY & STRAW SALE

12:00 Noon
Every Wednesday
Westend of Avondale
at the intersection of
Baltimore Pike and
Route 41.

Harvey Z. Martin
215-268-3604
(Office)
215-445-5303
(Residence)

KING'S AUCTION

KIRKWOOD

Hay, Straw and
Grain Auction
EVERY TUESDAY

12:00

Located Rt. 472 5 miles south
of Quarryville or 6 miles north of
Oxford at Shaub's Auction
House

Lloyd H. Kraider,
Auctioneer
AU-000513L

No out of state checks
**ALL TRUCKERS AND
FARMERS WELCOME**

MELHORN SALES, SERVICE, TRUCKING CO.

1010 W. Main St., Mount Joy, PA 17552

The only full service company, in this area, to handle the total needs of the poultrymen.

Which Includes:

- Area distributor of a complete line of Bio-Guard Poultry & Swine sanitation products. Including: sow shampoo, field disinfectants, hatchery disinfectants, egg wash.
- DEKALB chicks & started pullets sold by Nelson Groff & Harold Mishler.
- Complete loading & unloading of pullets & spent hens.
- New modern dollie equipment to move your pullets fast and efficiently with minimum stress to the pullets.

*Place Your Confidence In A Full Service Company That
Wants To Be Worthy Of Your Business*

For More Information Phone:

717-653-1102

Monday - Friday 8:30 AM - 4:00 PM

