

NY Angus Assoc. To Hold Calf Sale

COBLESKILL, NY — Cobleskill college will be hosting the first annual calf sale sponsored by the New York Angus Association on Nov. 1.

Auctioneer Ken Brubaker will be on the block to sell 50 lots at the livestock facilities in Cobleskill, N.Y. The students enrolled in the beef program at the college will be working with the calves under the direction of Bruce Emanuel, professor of the beef program.

Angus Assoc. Offers Sire Report

ST. JOSEPH, Mo. — Individual and progeny data on more than 32,000 Angus bulls was analyzed to provide the information contained in the 1986 Angus Sire Evaluation Report, now available from the American Angus Association.

The report lists complete sire evaluation for birth, weaning and yearling information on 1,193 bulls that are currently in use in the United States. In addition there are 1,298 bulls listed in the young sire supplement.

For the first time the report contains a section with detailed carcass information. This was

Along with taking part in the activities of the sale, students will be putting on a demonstration on how to prepare a calf for the show ring. This clinic is designed to help juniors who wish to show their heifer or steers.

The cattle barn will be open for public inspection at 5 p.m. October 31, followed by a social hour at 7 p.m. and dinner at 8 p.m.

For sale catalogs contact: Wayne Heyden, Box 113, Morrisville, New York 13408 or phone 315-684-3781.

initiated because of increased demand for cattle that produce superior carcasses with a minimum of fat cover, both for the Certified Angus beef program and the general beef trade. It features information on 187 bulls.

No charge is made for a single copy of the report this year, either to members of the American Angus Association or to commercial cattle producers interested in locating superior bulls for an A.I. program or natural service. To obtain a copy simply write the American Angus Association, 3201 Frederick Boulevard, St. Joseph, Mo. 64501.

Adams Co. 4-H's To Hold Beef Show/Sale

YORK SPRINGS — The Adams County 4-H Beef Show and Sale will be held on Monday, Nov. 3, at Wenger's Saddlery, just north of York Springs on Rt. 15. Twenty-five Adams County 4-H members will compete for honors at the Second Annual County Show and Sale. The show will begin at 10 a.m. with the steers shown in weight classes.

The 4-H steer sale begins at 7

p.m. Buyers have two alternatives when they purchase a finished steer.

If you buy a steer for your own use, you need to make arrangements for the steer to be slaughtered, cut and wrapped to your order. A 1,000-pound steer should yield 600 pounds of beef. 4-H leaders have offered to haul your new steer, within reasonable distance, to your slaughterer.

The second alternative allows you to become an intermediate owner. Arrangements have been made with Carlisle Livestock Auction to resell your newly purchased steer. The steer will be transported to the auction the following day by 4-H leaders and will be sold on the open market. The auction will deduct a small commission and send you a check for the sale of your steer in that evening's mail.

USDA To Reopen Beef Purchase Program

WASHINGTON — Commodity Credit Corporation officials have announced that purchases of beef carcasses for export to Brazil will resume in the near future.

The CCC cancelled bids on Sept. 19 and temporarily suspended the beef purchase program due to handling problems at export points.

CCC officials said that ports on the Gulf and East Coasts are continuing to accept beef carcasses and they are being loaded on vessels.

Approximately 73,600,000 pounds of beef remain to be purchased under the program, which will be

reopened with the issuance of an invitation to bid as soon as warehouse space becomes available.

Swine Dysentery Report Available

KALAMAZOO, Mich. — "Nearly 40 percent of United States swine herds are affected with swine dysentery," estimates a technical services veterinarian featured in a swine management report recently published by The Upjohn Company. "Because of the costly effects of this disease — decreased feed efficiency and average daily

gain — swine dysentery is one of the most profit-robbing disease threats facing hog producers," he adds.

For a copy of this report on the treatment and control of swine dysentery, write: Swine Dysentery Report 1, The Upjohn Company, P.O. Box 5087, Kalamazoo, MI 49001-5087.

TREAT YOUR WATER SUPPLY AND INCREASE YOUR PROFIT



If your herd's water supply has high levels of nitrates, sulfates and/or bacteria your cows can not reach their full potential.

WE SPECIALIZE IN WATER TREATMENT ON DAIRY FARMS.

Our water conditioning methods reduce those robbing nitrates, sulfates, and bacterial to proper levels - resulting in improved herd Health - Milk Production - Butterfat.

YOU TEST THEIR FORAGE — WHY NOT THEIR WATER?

Contact us for information on our proven installations, and a test of your water supply.

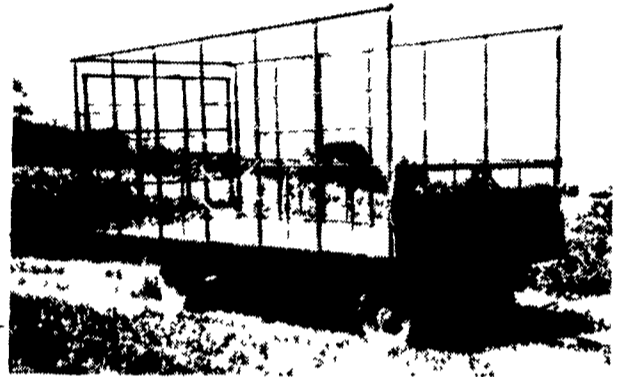
MARTIN WATER CONDITIONING

740 E. Lincoln Ave.
Myerstown, Pa. 17067
717-866-7555

548 New Holland Ave.
Lancaster, Pa.
717-393-3612

Early Morning & Evenings Call
717-345-8795

BEST BUY of the YEAR



- 6" Steel Main Beam
- 2" Vertical Tubing Drilled so that the 1" Horizontal tubing extends Full Length of Wagon
- Front-Side and Rear Loading and Unloading
- 2x8 Pressure Treated Lumber Floor
- 2x6 Oak Cross Beams
- Beds are 8' wide, available in 16, 18 or 21' lengths. Racks are 90" high.
- NEW FEATURE: 6" Channel across back for pushing wagon without damaging bed.

FOR FURTHER INFORMATION, CALL YOUR LOCAL DEALER:

LOST CREEK IMPLEMENT Oakland Mill, PA 717-463-2161	TOBIAS EQUIPMENT CO., INC. Halifax, PA 717-362-3132	OXFORD GREENLINE, INC. Oxford, PA 215-932-2753
MELROSE FARM SERVICE Greencastle, PA 717-597-3138	NORTHEAST DISTRIBUTING West Clifford, Pa. 717-222-9020	PAUL SHOVER'S, INC. Loysville, PA 717-789-3117
KELLER BROS. Lebanon, PA 717-949-6501	VALLEY IMPLEMENT SALES Harrisonburg, VA 703-434-9961	A.B.C. GROFF New Holland, PA 717-354-4731
DUNKLE & GREIB Mill Hall, PA 717-726-3115	CHAMBERSBURG FARM SUPPLY Chambersburg, PA 717-264-3533	CARLISLE FARM SERVICE Carlisle, PA 77-243-4419
WALTER G. COALE, INC. Churchville, MD 301-734-7722		CLARK'S FARM SUPPLY Williamsport, PA 717-494-0060

Manufactured By

CLW MANUFACTURING, INC.

R.D. #2, Box 8
Newburg, Pa. 17240
717-423-6794