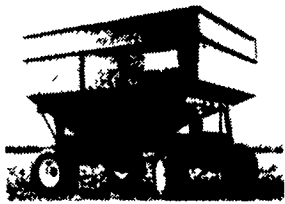




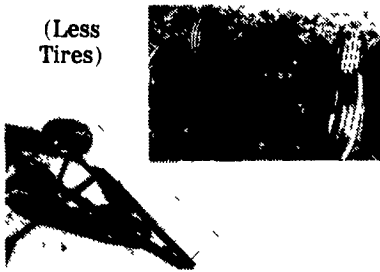
Why Settle For Less When You Could Buy The Best?
UM BINS & RUNNING GEARS

High Performance Gravity Flow
GRAIN BOXES



Cu. Ft. Capacity	CASH PRICE
• 190	\$580
• 230	\$645
• 275	\$695

High Performance Wagon Running
GEARS



(Less Tires)

Wt. Capacity	CASH PRICE
• 8 Ton	\$670
• 10 Ton	\$755
• 12 Ton	\$1,035
• 12 Ton Tandem	\$1,230

Save A Trip!
UM DRILL-MOUNTED CULTI-PLANTER

Culti-Planter mounts to the front of your grain drill/planter. It becomes an integral part of the implement so you can finish the seedbed and plant seed on the same trip through the field.

\$3,250



USED EQUIPMENT

GOOD USED SKID LOADERS IN STOCK

Come And Take Your Pick!

- IH No. 10 Grain Drill w/Grass Seed Attachment & Good Single Disk Openers..... \$475
- J.D. 10 Ft. Culti-Mulcher w/21 Double Spring Teeth, Outboard Transport Wheels, In Fair Condition \$1595 Or Best Offer
- Bush Hog Transport 16' Disk Harrow w/Buster Bar, Spring Assist Wing Fold Only \$1,950
- NH Model L325 Hydro. Drive w/60" Bucket \$5,600
- 1845 Case 45 HP Diesel, 1980 Model w/Auxiliary Hydraulics, Lights, 50% Rubber, 73" Bucket, UT 1079...~~\$9,500~~ \$8,995
- 1845 Diesel 45 HP, 1978 Model w/12:00x16.5 Tires & 73" Utility Bucket, UT1075...~~\$9,800~~ \$8,700
- Hutchinson 6'x53', PTO Driven Grain Auger, Transport-Type, 4 Years Old \$1,050
- 6 Ft. ATI Manure Fork For Case 1845C Unloader, UM 1031 \$496
- Gehl 99 High Throw Forage Blower, UM 1001 \$400
- Gehl 99 High-Throw Twin Spinner Forage Blower, 540 PTO, Excellent, UM 1005. \$1,295
- Gehl Tandem Axle Model 350 Manure Spreader w/Hydraulic Endgate, UM 1010 \$2,600
- Glencoe 12 Ft. Field Cultivator, Transport, Less Hydraulics, Pull-Type, Fair Condition...~~\$850~~ \$690
- Allis Chalmers Model 600 4 Row Wide No-Till Corn Planter w/Monitor & Dry Fertilizer, Very Good, UM 1014 \$1,950
- White Model 5400 No-Til Planter, 4 Row, Seed Monitor & Alarm w/Markers, Dry Fertilizer & Insecticide, Adjustable Row Spacing, UM 1015 \$4,950
- New Holland Model 80 3 Pt. Round Bale Mover, Less Cylinder, UM1017. \$385
- Gehl 42" Bucket To Fit 360 Gehl Skid Loader, No. 801747..... \$185
- Starline Tank Spreader, Tandem Axle. \$3,650 or Best Offer
- Good Used DMI Dual Wheel Kit Complete w/70% Tread, 16.9x38 Tires..... Only \$485
- Valk Truck, Front-Mount 8' Snow Plow w/Hydraulic Lift & Manual Angle w/Adjustable Skid Shoes \$750
- IH 56 4 Row Plate Planter w/Rubber Press Wheels, Disc Openers, Dry Fertilizer, UM 1036 ... \$1,650
- Steel Structure Approx. 40'x110' Long With Par Joists, 2 Overhead Doors w/Automatic Openers, Less Siding And Roof...Was ~~\$7,900~~..... You Haul Away Now Only \$5,900
- Good Used Hydraulic Elevator w/Cage, Hydraulic System & 3 Phase Motor, In Stock, Come And See..... Only \$1,250
- Folding Accordion-type Security Gate \$19.00
- Baker York Forklift w/8' Mast and 4000 Lb. Lift Capacity \$6,800
- C50 Hyster Forklift, 12' Mast, L.P. Gas, Excellent \$3,850
- IH Model 700 5 Bottom 16" Moldboard Plow w/Automatic Reset, In Furrow Or On Land Hitch, Good Frogs & Moldboards, Good Paint, Coulters, Hydraulics Complete Only ~~\$2,950~~ Reduced To \$1,950
- JD Model 450C 1980 Crawler w/6 Way Dozer, 24" Pads, 2500 Approx. Hrs., Undercarriage In Good Condition Priced Right!
- IH T340 Crawler, Gas Engine, 4 in 1 Bucket, 2 Tooth Ripper, Good Track, UT 1159. Only \$4,950
- Ford CL40, 1975 Model w/Gas Engine, 4 Cyl., New 60" Bucket, 7.50x15 Lug-Type Tires, Excellent, UT 1141 Priced Right!
- Mitey Mac 8A 22 H.P. Onan Engine, 1973 Model w/2 Buckets, 1 Fork, UT1140 \$2,350
- Increase The Potential Of Your Skid Steer Loader With This Versatile New Backhoe, In Stock Kelly Model BS 30C 8'6" Digging Depth, 15" Bucket \$4,550 Plus Installation
- Glencoe 14 Ft. Transport Field Cultivator, Less Hydraulics, 10 1/2' w/Folding Wing Sections For Easy Transporting Width, Like New, UM1056. \$1,650
- Wetmore Grinder Blower, New Only \$2,250
- MC Rotary Scythe, Approx. 6 Ft. Cut, Pull Type w/Spout To Blow Onto Wagon, Old But Good .. \$275
- IH Model 7000 Forklift, Gas Powered, Rough Terrain Forklift w/16.9x24 Tires, Hydrostatic Drive, 4,000 Lb. Lift, Approx. 11 Ft. Height...~~\$8,850~~ ... NOW ONLY \$8,300 Or Best Offer
- Bush Hog 16 Ft. Wing Disk, w/Buster Bar..... \$1,950
- Dual Tractor-Mount Loader w/Cylinders, Bucket And Mounting Kit For Ford 800 Series (No Hoses, Plumbing or Valves), Heavy Duty Style Only \$1,795

WE RECEIVED NOTICE OF A SIZEABLE PRICE INCREASE COMING ON TRAILERS -

Order Now From Our In-Stock Supply At Old Prices

TAG-A-LONG TRAILERS

Check Our New, Increased Weight Specifications
SAVE A BUNDLE



SPECIFICATIONS:

Axles..... 2	Color..... Yellow
Brake Axles..... 2	GVW..... 12,005 Lbs.
Hitch..... 25/16" Ball	16 Ft. Model
Deck Material... Oil treated	Deck Width..... 76"
2" pine	Deck Height..... 19"
Tires..... 8x14.5	
Capacity..... 10,000 Lbs.	

Removable Bolts On Fenders Are Included In Price

- **TT14** Deck Length: 14 Ft. • **TT16** Deck Length: 16 Ft.

- Pene-treated pine wood floor
- Gooseneck jackstand
- ICC lights with Berg connector
- Dexter axles with multi-leaf spring
- Automotive 8-bolt hubs with 16" rims
- Chrome hubcaps
- Stake pockets with rub rail
- Removable hide-away ramps (fully adjustable)
- 6 ton capacity

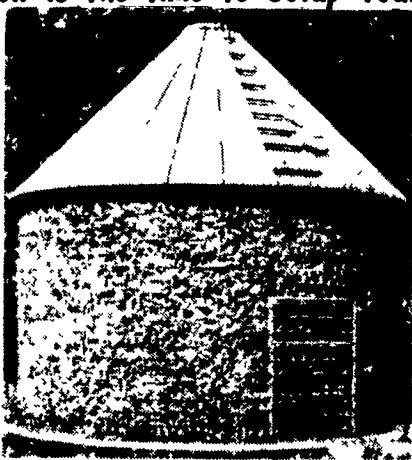


MODEL	BRAKE AXLE	HITCH TYPE	DECK WIDTH	DECK LENGTH	DECK HEIGHT	OVERALL LENGTH	DECK MATERIAL	TIRE SIZE	CAPACITY	WEIGHT	COLOR
L1021	3 (electric)	Gooseneck Ball	48"	16'	19"	16'	Oil Treated Pine	8x14.5	10,000	4000	SOUTHEAST RED

CASH..... **\$4,495**

INCLUDES 4 Ft. Folding Ramps

Did You Know Behlen Corn Cribs Are No. 4 Gauge, Which Is Heavier Than Most Other Brands And Helps To Prevent Bulging Of Sides.



BEHLEN CORN CRIBS

- Model FXL-15 865 Bushel plus extra capacity in roof area
 - Model-EL-101085 bushels plus extra capacity in roof area
 - Model-EXL-15 1515 bushels plus extra capacity in roof area
- IN STOCK**



Just Arrived!
CASE 586D FORKLIFT
 w/Power Shuttle Transmission, Approx. 1982 Model, Approx. 920 Hrs., Hyd. Shift, Shift-Mast, Lifts 6000 Lbs. Approx. 14 Ft.

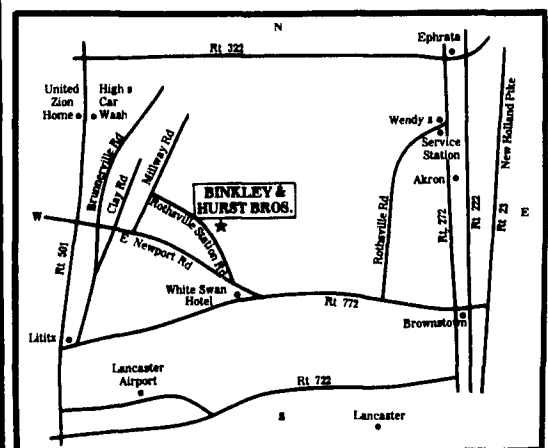
ONLY \$15,850

If You Want Versatility, Here It Is!



IH MODEL 254 24 H.P. DIESEL TRACTOR All Wheel Drive w/Excellent Loader Backhoe System You Can Really Enjoy!

NOW IS THE TIME TO MAKE YOUR DEAL!



BINKLEY & HURST BROS. INC.
 SALES · PARTS · SERVICE

133 Rothsville Station Rd., Lititz, PA 17543
 Located 1/2 Mile North of Rothsville
(717) 626-4705
 Hours: Mon-Fri 7 AM - 5 PM, Sat 7 AM - 11:30 AM
 Sun Closed - Lord's Day