

King's Hay

Kirkwood, Pa.
Tuesday, Oct. 14, 1986
Report supplied by Auction

16 loads.
Alfalfa, 96.00-122.00; Alfalfa Mix, 77.00-120.00; Mixed Hay, 74.00-90.00; Grass Hay, 86.00-90.00; 3 loads Straw, 92.00, 97.00, 99.00.
2 loads Ear Corn, 63.00 and 87.00.

Leinbach's Hay

Shippensburg, PA
Tuesday, Oct. 14, 1986
Report supplied by Auction
27 loads.
Alfalfa, 85.00-136.00; Mixed Hay, 65.00-135.00; Timothy, 72.50-120.00; Straw, 56.00-81.00; Ear Corn, 60.00-72.00; Rye Seed, 3.50 bu.

Dewart Hay

Dewart, PA
Monday, Oct. 13
Report Supplied by Auction
12 loads Hay, 45.00-76.00; 4 loads Wood, 20.00-37.00 ld.; 1 load Corn, 59.00.

Carroll Co. Hay

Westminster, MD
Tuesday, Oct. 14
Report supplied by Auction
6 loads due to rain.
Alfalfa, fair with mold, 77.00; Timothy, 80.00; Mixed Hay, 109.00; Wheat Straw, 95.00; Rye, 3.50 bu.

Good's Hay

Leola, Pa.
Wednesday, Oct. 15, 1986
Report Supplied by Auction
60 loads.
Alfalfa, 79.00-140.00; Timothy, 94.00-128.00; Mixed Hay, 80.00-135.00; Straw, 98.00-123.00; Corn, 59.00-75.00; Rye, 3.25 bu.

Chambersburg Hay

Chambersburg, PA
Thursday, Oct. 16
Report Supplied by Auction
9 loads.
5 loads third cutting Alfalfa, 91.00-112.00; 3 loads Mixed Hay, 78.00-84.00.

Belleville Livestock

Belleville, Pa.
Oct. 15, 1986
Report supplied by auction
CATTLE 131. Compared with last week's market: Slaughter cows about steady. Individual Good holstein 47.00, Standard and Good 39.25-45.75. Breaking Utility and Commercial slaughter cows 36.25-39, one 40.75, Cutter and Boning Utility 34.25-36.50, Canner and Low Cutter 31.25-34.00, Shells down to 28.00. Few Yield Grade No. 1, 1070-1815 lbs. slaughter bulls 41.85-46.75.
CALVES 107. Few Good vealers 60.00-66.00, Standard and Good 70-100 lbs. 52.00-57.00, few Utility 60-85 lbs. 42.00-50.00. Farm Calves: Holstein Bulls 90-125 lbs. 75.00-111.00.
HOGS 80. Barrows and gilts \$2 higher. US No. 2-3 205-255 lbs. 53.00-56.75. US No. 1-3 375-610 lbs. sows 44.00-46.25. Couple Boars 38.00-40.75.
FEEDER PIGS 264. US No. 1-3 20-35 lbs. feeder pigs 23.50-32.50, 35-50 lbs. 31.00-40.00, few lots 60-70 lbs. 41.00-46.00 - all per head.
SHEEP 18. Good and Choice 95-

115 lbs. wool slaughter lambs 52.00-57.00, one 87.00. Few Slaughter ewes 23.00-38.00.
GOATS 5. Few Medium 15.00-33.00 - per head.
Holstein Dairy Cows \$630.00-\$1075.00 - per head.

Chambersburg Livestock

Chambersburg, Pa.
Thursday, October 16
Report supplied by PDA
CATTLE: 232. Cows steady to 1.00 higher; few Good heifers 49.25-54.00; few Utility 35.85-37.75; Breaking Utility & Commercial cows 37.25-42.35; Cutter & Boning 34.75-37.75; Canner & Low Cutter 32.50-35.50; shells 29.00; few YG No. 1, 1050-1400 lb. 41.25-46.50.
FEEDER CATTLE: Steers Med. Frame No. 1, 450-850 lb. steers and bulls 44.50-54.50.
CALVES: 385. Few Choice 70.00-82.00; few Good 57.00-70.00; 70-105 lb. 55.00-61.00; hol. bulls 90-95 lb. 65.00-85.00; 100-125 lb. 80.00-117.00.
HOGS: 22. Lot No. 1-2, 240 lb. 55.00; lot No. 1-3, 205 lb. 50.75; few US No. 1-3 sows 400-560 lb. 41.75-46.75.
FEEDER PIGS: No sales.
SHEEP: 2. Couple Choice 98 lb. wool lambs 54.50.
GOATS: 7. Few Large 25.00-50.00.

St. Louis Cattle

October 16, 1986
Report Supplied by USDA
FEEDERS: Receipts around 1200 head. Feeder Steers and Heifers steady to mostly 2.00 lower, with most decline on 500-700 lb. cattle.
FEEDER STEERS: Medium with few large frame 1: 300-400 lbs. 66.50-71.50; 400-500 lbs. 64.75-70.50; 500-600 lbs. 62.00-67.00; 600-800 lbs. 60.75-65.50; 800 lbs. scarce; few 900-1000 lbs. fleshy 53.75-58.50.
LARGE FRAME 2 HOLSTEINS: 400-800 lbs. 45.00-51.00; 200-400 lbs. 53.25-58.00.
FEEDER BULLS: Medium Frame 1: 400-700 lbs. 52.25-57.75.
FEEDER HEIFERS: Medium Frame 1: 300-500 lbs. 54.50-60.50; 500-800 lbs. 53.75-57.25; package thin 601 lbs. 57.75.



Green Dragon Livestock Sales

Location: Ephrata RD 4. 1 mile N. on North State St., Ephrata.

COWS COWS COWS SALE EVERY FRIDAY

Lots of good Northern Feeder & Stockers. Slaughter Cows - Bull Steer, Veal-lamb.
11:00 A.M.-Beef Sale 200-300 each week.
1:00 P.M.-Dairy Sale.
7:00 P.M.-Small Animal Sale.
For Special Sales and Herd Dispersals on farm or at our barn or other market information call: Office 717-733-2444, Home 717-838-4318.
WALTER H. RISSER, Proprietor
All out of state and new buyers must have cash or certified check or current letter of credit from bank.

FRIDAY, OCTOBER 24 ON THE FARM MONTHLY BRED GILT SALE

1:00 P.M.
Sale To Start Promptly Every 4 Weeks
Located 18 miles south of Lancaster, Pa., 6 miles south of Quarryville, take Rt. 272 to Little Britain, turn north, follow Little Britain Road to Jackson Road, right. 2nd farm, OR take Rt. 222, out of Quarryville to Cedar Hill Road to Little Britain Road to Jackson Road, left. Watch for sale arrows.

20 Head Due Between Oct. 29 & Nov. 6
20 Head Due Between Nov. 6 & Nov. 17

50 to 60 Head WHITE DIAMOND GILTS
Here Now a new cross again. Large White & Landrace, first generation true F-1 gilts. Parent stock originated from Lieske Bros. Minnesota. Very productive in litter size and feed conversion.

Vaccinated for Lepto, Erysipias, Rhinitis, E'Coll, Pasteurella

Hand mated with Breeding Dates
Local Truck Available
No Hogs Sold On Commission

JOHN B. STOLTZFUS
R.D. 1, Kirkwood, Pa.
Abe Diefenbach, Auctioneer AU225L

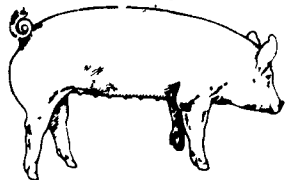
NEXT SALE DATE NOVEMBER 21, 1:00 P.M.

BUYING SOYBEANS EAR & SHELLLED CORN

Contract or Spot Purchase
Futures and Options Trading Services Available

MARTIN GRAIN

Business 717-653-1085
Residence 717-653-5935
84 E. Main St.
Mt. Joy, Pa. 17552



EMERY'S BUYING STATION

OPEN TO RECEIVE YOUR MARKET HOGS

AT THE GREEN DRAGON MARKET
RD 4, EPHRATA, PA 17522
1 MILE NORTH OF EPHRATA ON NORTH STATE STREET.

HOURS: MONDAY, TUESDAY, and WEDNESDAY 6:00 A.M. to 11:30 A.M.
215-458-5677 Residence
717-733-9648 Office

YOU ARE PAID FOR YOUR HOGS IMMEDIATELY

Ken & Lois Emery, Proprietors

ATTENTION FARMERS

The New Way To Market Your Livestock

HATFIELD PACKING CO. AND MOYER PACKING CO.
Will Receive Hogs Will Receive Cattle

At The

BLAIR-BEDFORD BUYING STATION

RD 1 Martinsburg, Pa

MONDAYS - Hogs 8 AM to 11:30 AM
Cattle & Calves 8 AM to 3 PM
THURSDAYS - Cattle & Calves 8 AM to 3 PM

- No commission or yardage fees deducted from check
- Livestock weighed and paid for immediately
- You may call our office sale day for prices

DALE R. HOOVER - Owner
Business 814-793-3077
Residence 814-793-2657

CRIPPLED AND DISABLED

Cows, Steers & Bulls For Slaughter Under USDA Inspection

Call Wayne Taylor
717-866-6289
215-286-9400

Lebanon, Berks, Lancaster & Chester Counties

HAY & STRAW SALE

12:00 Noon
Every Wednesday
Westend of Avondale at the intersection of Baltimore Pike and Route 41.
Harvey Z. Martin
215-268-3604 (Office)
215-445-5303 (Residence)

KING'S AUCTION KIRKWOOD

Hay, Straw and Grain Auction
EVERY TUESDAY
12:00
Located Rt 472 5 miles south of Quarryville or 6 miles north of Oxford at Schaub's Auction House
Lloyd H. Kreider, Auctioneer AU-000513L
No out of state checks
ALL TRUCKERS AND FARMERS WELCOME

ATTENTION

Dairy Buyout Farmers

- * Get the most for your herd
- * Go direct - Farm to Packer
- * Any size herd - all weights and grades of cows
- * Trucking provided
- * Paperwork handled quickly and efficiently

TAYLOR PACKING CO., INC

P.O. Box 188
Wyalusing, PA 18853
717-746-1309