

Dairy and Livestock Sales

SAT. NOV. 22 - 10:30AM
Big Milk Eq., 1 Ac. Bldg.,
Forage & Liq. Manure
Spreader. For: J.H. Van
Cleef, Jr., 2.5 mis. SW of
Middlebush, NJ (New
Brunswick Area), 13 mis.
N. of NJ Turnpike, use
Exit 10 to Rt. 287 N., take
Exit 6 (Easton Ave.) left off
ramp to Rt. 527-S. for half
mi. turn S. by Amco gas
sta. on to Cedar Grove
Lane Rt. 619-S., go 3 mis.
to light, turn W. on Rt.
514-W. go half a mi., turn
S. on Grouser Rd., go half
mile to Van Cleef Rd., to
Dairy Complex. From
Flemington, NJ, take Rt.
514 E. off of Rt. 202, to
Millstone, NJ, to Rt. 533-
S., go 3 mis. & turn E. onto
Blackwell Mills Rd. to Van
Cleef Rd. Col. Fred R.
Daniel Auc'ts., Inc.

FRI. DEC. 12 - 5:30PM
Gap Auction. Antiques &
HH sold at every auction.
Located off Rt. 41,
Lancaster Turkey Hill
Mint Mkt., cross RR
bridge. Ira Stoltzfus &
Son, Auc'ts.
FRI. DEC. 12 - Woodward,
Centre Co., PA. Complete
Milking Herd and Bred
Heifer Dispersal. David &
Cecilia Houser, Owners.
Sale Managed by: Kling's
Auction Service. Jim
Smith, Auc't.

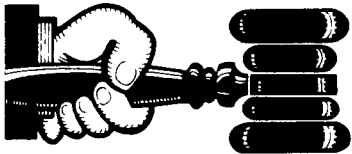
FEBRUARY

THURS. FEB. 19 -
Longview Farms (Punk
Bros.), Rt. 526,
Imlaystown, NJ. Farm
Mach., used on 1000 acre
potatoe & grain farms.
Sale by: Col. Fred R.
Daniel Auc'ts., Inc.

THURS. FEB. 26 - Roberi
England, Gordon Rd.
Robbinsville, NJ. Big
Grain Farm Mach. Sale by
Col. Fred R. Daniel Auc'ts
Inc.

DECEMBER

FRI. DEC. 12 - 1:30PM PA
State Graded Feeder Pigs.
Carlisle Livestock Market,
Exit 12 Off I-81.



AUCTIONEER'S DIRECTORY

NOTICE

To assure that your
Public Sale appears
in the Public Sale
Section we must
have your ad-
vertisement by 4
P.M. Tuesday of each
week's publication

WOLGEMUTH AUCTIONEERS

R.D. #2 Manheim Pa

COMPLETE
AUCTION SERVICE

CH
PH 717-665 5664
BOB
PH 717-665 6684
DENNIS
PH 717-627-0571

General Auctioneers - Specializing in
Liquidation of Personal Property,
Equipment, Antiques, Real Estate

Reist Auctioneers

Alfred G. Reist
1050 Eden Road
Lancaster,
PA 17601

Licensed • Bonded
Lancaster 717-569-2079
Evenings/Lititz
717-627-8008

PROFESSIONAL Auctioneering

PAUL E. MARTIN
R.D. 1, Box 553
Stevens, Pa. 17578

JOHN D. STAUFFER
217 Andrea Dr.
Lititz, Pa. 17543

Complete Auction Service - We assist you and advise
you from the planning stages of your auction to the
completion of your auction

For A Consultation In Your Home Call
Paul (717) 733 3511 - John (717) 665 5099
Licensed and Bonded

KREIDER & KLINE AUCTION SERVICE

COMPLETE PROFESSIONAL AUCTION SERVICE
REAL ESTATE — FARMS & RESIDENTIAL
PERSONAL PROPERTY — ANTIQUES —
FARM STOCK SALES — LIQUIDATIONS

RANDAL V. KLINE
AUCTIONEER REALTOR
717 733 1006
717 569 8701

LYOYD H. KREIDER
AUCTIONEER
717 786 3394

ROY E. GOOD, JR.
RD 1 BOX 151 A
DENVER PA 17517
215 445 4309

Public Auction Register

Closing Date Monday 5:00 P.M.
of each week's publication

DEALER IN ALL KINDS OF LIVESTOCK

Also Crippled & Down Cattle

MARLIN S. IRWIN

Quarryville, PA
PH: 717-786-3016



GAP AUCTION FRIDAY EVE., OCTOBER 24 5:30 P.M.

Selling Laura Horst Estate

Located off Route 41 - Lancaster Avenue Op-
posite Turkey Hill Mint Market - Cross RR Bridge

ANTIQUES AND HOUSEHOLD GOODS
SOLD AT EVERY AUCTION.

CONSIGNMENTS ON MONDAYS
FROM 8:00 A.M. to 7:00 P.M.

IRA STOLTZFUS & SONS, Auctioneers

442-4936 or 442-8254

AU000907-L

CONDUCTORS ALL TYPES PUBLIC SALES

1986 SOUTHEAST DISTRICT 4-H/FFA CLUB CALF SALE

20 Pre-Conditioned
Halter Broken Calves
Will Sell!

SATURDAY, NOV. 15, 1986

2:30 p.m.

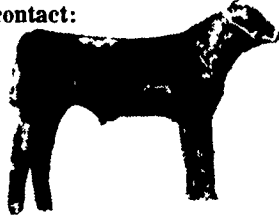
(Immediately following the 4-H Baby
Beef Sale which begins at 1:30 p.m.)

NEW HOLLAND SALES STABLES
New Holland, PA

For information contact:

Cheryl Fairbairn
(215) 696-3500

Chet Hughes
(717) 394-6851



HOLSTEIN HERD DISPERSAL

80 HEAD

80 HEAD

TUESDAY, OCTOBER 21, 1986

12:00 NOON

Located in Lancaster County, PA, 3 miles
east of the village of Intercourse, 1 mile
west of White Horse. Along Route 340
just west of Route 897.

50 HEAD OF MILK COWS

10 head fresh Aug - Sept., 15 head due
Oct. - Nov. - Dec. balance in all stages of
lactation

30 head heifers, 20 head springing to
short bred, approximately 10 head
yearlings to calves

Approximately 25 head 1st & 2nd calf

100% home raised - Presently avg 3.59
butterfat

30 Day Charts - Pregnancy Checked

Owners:

HERSHEY & MARGUERITE KURTZ

Auctioneer:

Steve
Steve Jr. Petersheim:
717-786-4624

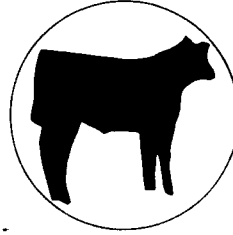
Lic. #AU-001349-L

Auction note: This is a young healthy herd with
good milk record potential.

1986

PIEDMONT INVITATIONAL CLUB CALF SALE

7:00 P.M.



OCTOBER 25, 1986

Frederick Fairgrounds
Frederick, Maryland

Selling:

40 Head Crossbreed Steers

These calves are the best set of calves we have ever
offered at auction.

Sales Manager:

OLLIE BENNETT

2672 Jennings Chapel Rd.
Woodbine, Md. 21797
(301) 489-4934

A short time spent here can save
you a lot of time and a lot of miles
in your search for club steers

Plan to be with us on October 25th

**"Let Us Put You In The
Winners Circle"**

LE-IDA FARMS Holstein Production Sale

FRIDAY

OCTOBER 24, 1986

12:00 NOON

Located in Cumberland Co., PA; 7 miles east of Shippensburg, PA;
3 miles west of Newville, PA. off Route 533 on Oakville Road
- off Route 81 at Newville Exit.

50 HEAD REGISTERED HOLSTEINS SELLING

35 milking animals balance bred heifers down to calves

Selling 2 animals scored EX, 4 scored VG, balance GP. They are
young and good uddered. Majority are selling recently fresh or
springing. No blemished or undesirable individuals sell in this
auction.

Several animals selling - milking from 80 to 100 lbs.,
Everything Vaccinated - Certified and Accredited Herd

Some Featured Animals Selling Include:

An EX 2E-91 pt Red and White sired by Burkett Falls Grandee-
EX Mammary - naturally polled - sells fresh and bred to Triple
Threat - Making over 19,000 lb of 4% milk this lactation

An EX Matt tippy with an EX-MS, 22,000 lb of 3.7 milk-over 800
fat - sells fresh and bred to Rico

An 88 pt Elevation - due Oct with 3rd calf - 20,000 of 3.7 milk -
Full sister 93 pt 3E 2 VG Dams with over 20,000 m

An 86 pt Vigo Starlite Elvate 3 yr old - sells just fresh and
milking over 80 lbs - 14,833 of 4-1 milk as a 2 yr old - Dam VG
Ivanhoe Star

An 83 pt 3 yr old Van daughter with 14,700 lb of 4.6 milk as a 2
yr old - sells fresh and milking 81 lbs of 4.9 milk - dam is 2E -
94 pt Elevation granddaughter with 27,000 of 4.4 milk - over
1200 fat

Also selling:

2 Service-age Bulls sired by Tradition and Elevation - Both with
VG Dams with top production

Plus 30 Tie Stalls

LEROY AND IDA SHOWAKER, OWNERS

R.D., NEWVILLE, PA.
(717) 776-3482

Sale Managed By:



Landisburg PA
(717) 789 3883 Lic No 500

DAVID RAMA, PEDIGREES
Delancey, NY