

Public Auction Register

Closing Date Monday 5 00 P M
of each week's publication

SAT. NOV. 1 - 9AM
Holstein Herd, Milking
Eq., Feed, Farm Mach.,
Mules. 2 mi. SE of In-
tercourse. Jonathon and
Susie King, Owners. Steve
Petersheim & Steve Jr.,
Aucts.

SAT. NOV. 1 - 9AM An-
tiques, & Personal
Property. From
Downington, PA, take Rt.
322 E. 5.3 mi., pass
Farm Credit Service &
turn left onto Copeland
School Rd. Follow to sale.
By Ian & Doris Letch. Jay
M. Leary & Associates,
Aucts

SAT. NOV. 1 - 9AM
Valuable Real Estate,
Personal Property.
Located 138 Kready Ave.,
Millersville, PA. For:
Robert C. Herr and the
estate of Sarah R. Herr.
Johnson's Auctioneering
Serv., H. Edward John-
son, Auct.

SAT. NOV. 1 - 9:30AM
Real Estate, Trucks,
Tractors, Farm Mach.,
New Farm Supply In-
ventory. Klingler, Inc.,
Middlecreek, PA. 4 mi. N.
of Beaver Springs in the
village of Middlecreek.
Follow Klingler Inc signs
off Rt. 522. Bryan D. Imes,
Auct

SAT. NOV. 1 - 9:30AM
Line & Construction Eq.,
4x4s, Cars, Vehicles. For:
Niagara Mohawk Power
Corp., Rome, NY.
Vilsmeier Auct. Co., Inc.

SAT NOV 1 - 9:30AM
Light Duty Utility Vehicles.
For: Consumers Power,
Charlotte, Michigan.
Vilsmeier Auct. Co., Inc.

SAT NOV 1 - 9:30AM
Brand new material from
various businesses,
building material, hard-
ware, wallpaper, lighting
paint, hand tools.
Stewartstown, PA, inside
the Stewartstown Fire

Hall. C. Martin Heaps and
J. Everett Kreider, Aucts.

SAT NOV. 1 - 10AM Hay
Sale On PA Rt. 24 bet-
ween Stewartstown &
New Park. York Co.
Livestock Sales Ltd. Stan
& Mary Nagle, Owners.

SAT. NOV. 1 - 10AM
Annual Western MD
Contractors Auction.
Hagerstown MD
Fairgrounds James G
Cochran, Aucts.

SAT. NOV. 1 - 10AM
School Beneficial Con-
signment Sale. Road 100
between Road 162
(Sharon Hill Rd.) & 163.
1 1/2 mi. N. of Victory
Chapel, (Route 8) on the
Eli H. Miller Farm, RD2,
Box 298A, Dover, DE
19901. Dave Wilson &
Wm. Beachy, Aucts. Sale
Managers: Eli H., Sam D.
& Allen Miller.

SAT. NOV. 1 - 10:30AM

Farm Eq. N. of E. Berlin,
PA, York Co., N. on Rt. 94
1/2 mi. to Rife Rd. turn W. 1
mi. to sale on right. For:
Mr. & Mrs. Keith H.
Gladfelder, Blaine N.
Renzel, Auct.

SAT. NOV. 1 - 10:30AM
237 Acres. John Allen
Gibson Property,
Albemarle Co., VA. Ownby
Auct. & Realty Co., Inc.

SAT. NOV. 1 - 11:30AM
Dairy Herd Dispersal.

Uniondale, PA,
Susquehanna Co. 51
Holstein Milk Cows &
Farm Machinery. Albert &
Mary Verboys, owners
Weavers Sale Service,
Auct.

SAT. NOV. 1 - 12:30PM
Dispersal Sale. 70 Reg
Polled Herefords. Foust's
Hidden Oaks, Gettysburg,
PA. John Downin, Auct.
Phone for free catalog,
717-334-5966.

**GOOD'S
AUCTION**

111 North Maple Ave. Leola
Hay and Straw Sales

Every Wed. At 12 o'clock noon

Farm Machinery sales first Wednesday of
every month. September, October & Novem-
ber.

Hardware and tools	9:00 o'clock
Building Material	11:30
Lawn and Garden	12:00

Followed By Machinery

No Household Goods

No Junk

No Out Of State Checks

GOODS AUCTION

111 North Maple Ave.

Leola, PA. 17540

Auction House
#000014-L

PUBLIC AUCTION

SATURDAY, OCTOBER 25, 1986

9:00 A.M.

Location: Between Elizabethville, Pennsylvania & Loyalton,
Along Route 209, In Dauphin County.

FARM MACHINERY & RELATED ITEMS

Farmall 504 Tractor (1200 hrs.); Ford Ferguson 9N Tractor; McCormick
125 SPV Combine; Int. 3-Pt. Hitch 3-Bottom Plow; Int. 3-Pt. Hitch Sickle
Bar; Ford 3-Pt. Hitch 2-Bottom Plow; New Idea No. 17 Manure Spreader;
Wood Bros. Rotary Mower; Farguhar Tree Sprayer; Disk; Int. Corn
Planter; New Idea Single Row Corn Picker; McCormick Int. 10 Drill w/16-
7" Double Disk; David Bradley Rubber Tire Side Delivery Hay Rake; 4-
Section Spring Tooth Harrow; 3-Pt. Hitch Scraper Blade; McCurdy Bin
Wagon; Cement Mixer; Case 27' Elevator; 4" Grain Auger; 12' L; Horse
Drawn Plow, Potato Plow & Plank Sled; Mandrel Buck Saw; Lincoln 225
AMP Electric Welder; Blower for Blacksmith Forge; Rough Lumber;
Assortment of Wooden Barrels & Apple Boxes; Wooden Cider Press,
Electrified; Cream Separator; Assorted Wooden Beehives & Supplies;
Misc. Hand & Garden Tools; (2) Machinist's Wooden Tool Cabinets;
Assortment of Plumber's Catalogs & Reference Books; Numerous Other
Items.

**1968 FORD 350 TRUCK w/DUMP BOX
NEW MOON 10'x55' MOBILE HOME w/2
BEDROOMS, BATH & COMBINED LIVING
ROOM-KITCHEN (MUST BE MOVED)**

ANTIQUES & COLLECTIBLES

Solid End Jelly Cupboard; Splay Leg Stand; Small Tramp Art Chest;
Round-Top Trunk; Wicker Stand; 6-Drawer Counter Top Cabinet
w/Original Old Red Paint; Oak Case Treadle Sewing Machine; Wooden
Hanging Pie Cupboard; G.E. Circa 1900 Refrigerator w/Compressor on
Top; Penn Kitchen Coal Stove w/Warming Closet Top; Rose Bud Iron Pot
Belly Stove; (2) Iron Butcher Kettles; Copper Washboiler; Enterprise No.
35 Sausage Stuffer; Copper Apple Butter Kettle; Meat Bench; Butcher's
Fork & Pr. of Ladles; Beam Balance Scales; Wooden Butter Churn; (2)
Plank Bottom Rockers; (2) Pressed Back Chairs; Assorted Jugs & Crocks;
Rayo Lamp, Electrified; 36" H. Adv. Dog Marked Nipper (formerly used
as RCA dog); Sm. RCA Adv. Dog; Assorted Depression Glass; Granite
Coffee Pot; 4-Pc. Toilet Set; Book - "Pennsylvania at Chickamauga &
Chattanooga"; Numerous Other Items.

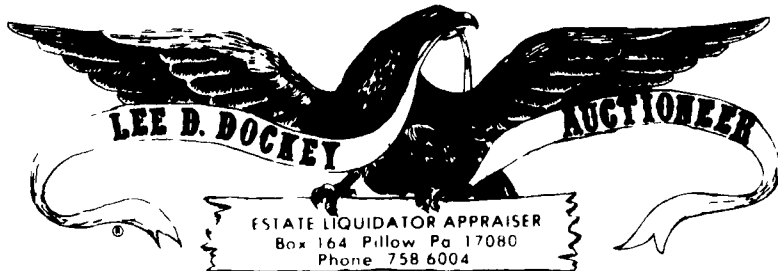
HOUSEHOLD ITEMS

Whirlpool 21.5 No Frost Upright Freezer; (2) Upholstered Platform
Rockers; Sofa Bed; Recliner; G.E. Dehydrator; 5-Pc. Wooden Breakfast
Set; Enterprise Meat Grinder; Canning Jars; Dishes, Pots & Pans;
Stevens 12 Ga. Shotgun; .22 Rifle; Remington Single Shot .22 Rifle Patent
Date 1902; Etc.

**TERMS: CASH. Personal Checks Accepted Only From Persons Having
An Established Account w/Auctioneer or Approval Prior To Day Of Sale.
Note: Auction Will Begin w/Farm Machinery & Related Items.**

GRANT C. TRESSLER
Owner

AUCTIONEERS: DOCKEY #AU229L,
DOCKEY #AU1683L & DEPPEN #AU1957L



**PUBLIC AUCTION
KLINGLER, INC.**

Middlecreek, PA

SATURDAY, NOVEMBER 1, 1986

9:30 a.m.

**REAL ESTATE • MILLING EQUIPMENT • TRUCKS
• TRACTORS • MODERN FARM MACHINERY
• FERTILIZER EQUIPMENT • OFFICE EQUIPMENT**

Directions to Auction: 4 miles north of Beaver Springs in the village of Middlecreek.
Follow Klingler Inc. signs off Route 522.

REAL ESTATE AT 11:00 A.M.

Parcel A situated on 15 acres, 3500 sq. ft. block and steel newly constructed and equipped feed mill
with over 4,000 sq. ft. storage buildings and self contained power unit and heat system. Located in
Central Pa., surrounded by a farming community. Business currently in full operation with Ralston
Purina dealership, also good possibility for other business.

Parcel B situated on a one acre plus lot, two story frame dwelling complete with white vinyl siding,
4 bedrooms, full bath, kitchen, living room, dining room, office, open porch in front, one car garage
below, oil fired, hot water heat, drilled well and sewage, can be used very well with parcel A.

**POWER UNIT, MILLING EQUIPMENT,
AND STORAGE**

Sold With Parcel A

2- 671 Detroit diesels, back to back with synchronous 150 kw, 520 amp 3 phase generator; Howe
model 5982 20 ton 24 ft. truck scales; Roskamp model K roller mill with 15 h.p.; Shutte 20" hammer
mill with 75 h.p.; 5 ton horizontal mixer with molasses blender and 5 ton overhead scales, 2-25 ton 4-
12.5 ton bins above 5 ton overhead scales; 2 ton horizontal mixer with inside molasses blender; oil
fired grain dryer; overhead grain cleaner with Richardson 4 bu. trip scales; Ford corn sheller with
cob grinder with 30 h.p. electric motor; platform bag sewer; hvy. duty twin cylinder air compressor
with 15 h.p.; 16'x50' concrete stave 8,000 bu. silo; 4,000 bu. steel silo 3 round metal bins overhead, 2-
1200 bu., 1-1000 bu., truck hoist for grinding pit; under ground 25 ton molasses tank; 2 trailer load cob
storage; 2400 bu. round wire crib; over 4,000 sq. ft. block and framed storage buildings; 4,000 gal.
under ground fuel storage.

TRUCKS

1970 Chevrolet 60 series bulk blower truck with Kidron 16' alum dump van body; 1973 Chevrolet 30
series 10 ft. dump; 1974 Chevrolet 50 series 12 ft. dump; 1974 International 1700 4x4 spray truck with
800 gal. SS tank and hyd. booms; 1972 International 1700 4x4 spray truck flotation tires with 1080 gal.
poly tank and hyd. booms; 1969 GMC Twin Screw Tractor 238 dsl. 10 sp. Road Ranger wet line; 1961
Mack B61 model tractor with wet line; Fruehauf 28' flatbed trailer; Fruehauf 21' flatbed trailer;
Fruehauf 21' steel dump trailer.

**TRACTORS, MODERN FARM MACHINERY,
MISC. FERTILIZER AND MILLING EQUIPMENT**

J.D. 1520 gas; J.D. 45 hyd. loader; J.D. 3x16" 3 pt. trip plow; J.D. 1010 gas Special; A.C. D-17 gas;
AC 400 hyd. loader; J.D. 440 12' plowing disc; Servis 3 pt. 6' scraper blade; I.H. 100 3 pt. 7 ft. mower; 3
pt. subsoiler; Smoker 24' hay and grain elevator; N.H. 36 ft. hay and grain elevator; J.D. Drill for 14"
row soybean drilling; Hercules 50 h.p. gas engine with turin disc clutch and 8 belt pulley, needs
governor; 3 pt. weight bracket and weights; side delivery rake; Gandy 4 row insecticide mounting
for old style J.D. Oliver, M.F. and Moline planters, new; 200 gal. 3 pt. field sprayer, 30 ft. booms and
PTO pump; 3 pt. fertilizer spreader; Meyer 7 ft. snow plow; weigh wagon hopper with trip scales;
6,000 gal. fertilizer tank with 3" outlet; 8,000 gal. glass lined storage tanks; 10'x10' overhead door,
new; single and three phase motors; freight carts on rubber; air greaser on wheels; gear drive chain
hoist; Bear head light tester; sev. 10.00-20 truck tires and wheels; 900.16-8 ply military tires and
wheels; hyd. cylinders, different sizes; John Blue clutch and gears; transmission for I.H. 4x4 truck;
sm. bag elevator; 9 ft. pay loader bucket; Sprout Waldron molasses blender with 15 h.p. 3 phase
motor; Sprout Waldron feed blowers and feeders; Muson corn cracker; iron scrap piles; fifth wheels
for tractors; many other truck parts; several hundred 8 ft. sawed and unsawed locust posts.; 8 ft.
truck cap.

Garden Tractors: Ariens 14 h.p. hydrostatic, rebuilt engine with 48" mower deck, snow plow, and
rear weights, very good; Ariens 8 h.p. gear drive, 36" mower deck, new engine.

OFFICE EQUIPMENT AND MISC. ITEMS

3M copier; book keeping machine; office desk and chairs; typewriter desk; manual typewriter;
calculators; sev. new Federal Pacific 6 ft. baseboard heating units, complete; antique potbelly
stove; storm doors; 17-32"x64" storm windows; 19-35" x 28", 35"x39" frame windows; hand tools;
antique bicycle; antique square back sleigh, made in Newport; sev. new farm supply items and in-
ventory.

Sale Order: 9:30 a.m. - Misc. and New Farm Supply Inventory; 11:00 a.m. - Real Estate; 1:00 p.m. -
Trucks, Farm Machinery.

Terms and Conditions: Date - Saturday, November 1, 1986, 9:30 a.m. Auction site on property.
Property Description: Parcel A - 15 acres with hard road frontage, trout stream, and currently
operating milling business. Parcel B - 1 acre lot, 2 story frame dwelling, hard road frontage and
trout stream.

Terms of Sale: 10 per cent down at time and place of auction by certified or bank cashier's check or
personal check accompanied by bank letter of credit, approved in advance. Closing of title within 30
days, on or before December 1 by payment of balance of purchase price by certified check or bank
cashier's check. Terms on individual items: Cash, certified, bank cashier's check or personal check
accompanied by bank letter of credit, approved in advance. Auctioneer reserves the right to reject
any bids.

Owner financing available.

KLINGLER, INC.

For information or inspection
Contact Richard E. (Dick) Bucher
717-658-9782, 535-5151, 444-3220

Bryan D. Imes, Auctioneer
RD 2, Port Royal, PA 17082
717-527-2449
AU 001656-L

Note: Announcements made day of sale take precedence over printed material
NOT RESPONSIBLE FOR ACCIDENTS • LUNCH STAND

