

Ag Sec. to Speak at Northumberland Banquet

Pennsylvania's Secretary of Agriculture, Richard E. Grubb, will be the featured speaker at Northumberland County Cooperative Extension Service's annual banquet on Wednesday, November 12, in Sunbury. In addition to Grubb's speech, the annual meeting will include the election of officers for 1987 and various reports. The banquet begins at 6:30 p.m. at St. John's United Methodist Church, Second and Arch Streets, Sunbury; tickets may be purchased from any member of the Executive Committee or the Extension Office located in the Courthouse Annex.

Dr. Grubb, whose topic will be "An Era of Change," was appointed Secretary of Agriculture for the Commonwealth of Pennsylvania by Governor Thornburgh on May 8, 1985, and was confirmed by the State Senate on October 1, 1985.

Grubb was born December 18, 1936 on his parents' farm in Centre County, Pennsylvania. He was raised on the farm and remains active in agricultural affairs.

Grubb graduated from Penn

State in 1958 with a B.S. in Agricultural Economics and Rural Sociology. He received his M.S. in Agricultural Economics in 1961 and a D.Ed. in Higher Education from Penn State in 1971.

The agriculturalist/administrator has held several positions in a 24-year career with the Pennsylvania State University. Prior to accepting his appointment with the Department, Grubb had served as the senior vice-president for administration at Penn State.

His involvement in economic development efforts includes service on the Boards of the Pennsylvania Industrial Development Authority, the Pennsylvania Energy Development Authority, the Governor's Energy Council and the Ben Franklin Partnership. He is a member of the Economic Development Committee of the Cabinet.

He is a member of the State Conservation Commission and the state's Environmental Quality Board. He is chairman of the Agricultural Lands Condemnation Approval Board, the Pennsylvania

Farmland Management Commission, the Pennsylvania Farm Market Loan Program and the Pennsylvania State Farm Products Show Commission.

Grubb, one of eight national 4-H

Alumni Award winners for 1985, is a past chairman of the Centre County 4-H Program Council.

He is a director of the United Federal Savings Bank, headquartered in State College,

and has served as a director of the State College Area School District and Central Intermediate Unit.

Grubb and his wife Barbara have three children — Susan, Jeffrey and Amy.

Maturity Date Of CCC Feed Grain Loans Extended

LEESPORT — Farmers who have a Commodity Credit Corporation loan on 1985-crop feed grains, wheat, soybeans and rye can extend the maturity date of the loan by 12 months, according to Donald E. Lutz, chairman of the Berks County ASC Committee.

The additional time will allow farmers to take advantage of existing storage space at harvest time, Lutz said. USDA, in preparation for a large grain harvest this fall, is encouraging

producers to take advantage of all available on-farm storage space.

Lutz said storage costs for the additional 12-month loan will be paid on all crops except soybeans. Storage will be paid upon request, but no earlier than 30 days before the original loan maturity date. The annual storage rates are 26.5 cents per bushel for wheat, barley, rye and corn; 47.32 cents per hundredweight for grain sorghum, and 20 cents per bushel for oats.

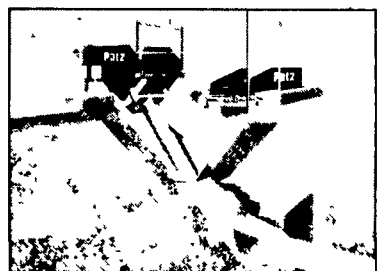
Under the CCC loan program, farmers borrow money using their

crops as collateral. When the loan matures, producers either repay the loan plus interest or forfeit the grain to the CCC. According to Mr. Lutz, Berks County has 53 active commodity loans. The grain is stored on farms or in commercial warehouses.

Requests for loan extensions should be submitted in writing to our office no earlier than 60 days before the loan maturity date, the ASCS official said. The loans may be repaid any time during the 12-month period.

Patz

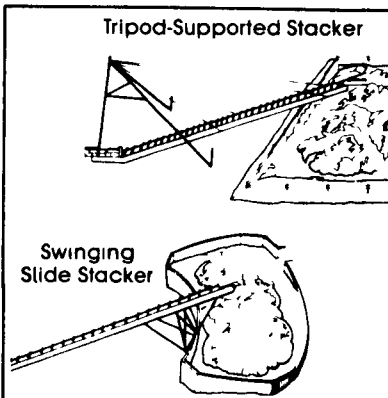
The People Who Specialize In Manure-Handling Systems



Model 100



Model 200



Sales and Service



Two Convenient Locations
automatic farm systems
Dairy Division

608 Evergreen Road Lebanon, PA 17042 (717) 274-5333
RD 2 Box 271 East Earl, PA 17519 (717) 354-0584

WE CUSTOM DESIGN SYSTEMS FOR YOU

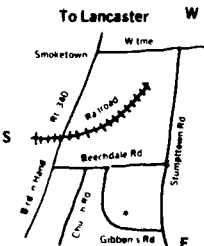
10% SPECIAL THRU OCTOBER
ALL PURPOSE CARTS
WITH REMOVABLE BACK



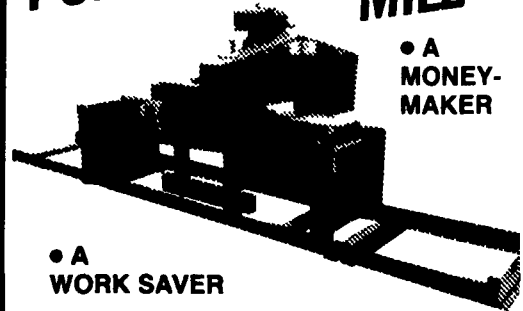
8 cu. ft. w/Solid front w/20" Pneumatic Wheels, Reg. \$120.00
15 Cu. Ft. w/Dump Front w/26" Pneumatic Wheels, Reg. \$150.00
Will Make Any Size You Order made Of 1/2 In. Exterior Plywood Edges Protected w/Galvanized Sheet Finished w/Treated Redwood Stain Handle And Legs = Zinc Plated Tubing

Elam M. Ebersol

558 Gibbons Rd. Rd 1, Bird-in-Hand, PA 17505
1 1/2 Mile N. of Bird-in-Hand, PA



KASCO PORTABLE BANDSAW MILL



• A MONEY-MAKER

• A WORK SAVER

This rugged sawmill cuts boards any thickness from 1/4" to 9" • it will quarter saw • handles logs up to 24" diameter • cuts boards smooth and straight • Walnut, Oak, Cherry and other hardwoods are no problem to saw • saves you more usable lumber • low price makes this saw affordable for individual use.

Call or write for full details
Kasco Manufacturing Company, Inc.
Route 3 Box 393 • Shelbyville Indiana 46176
Phone (317) 398 7973

C.B. HOOBER & SONS, INC.
Intercourse, PA
(717) 768-8231

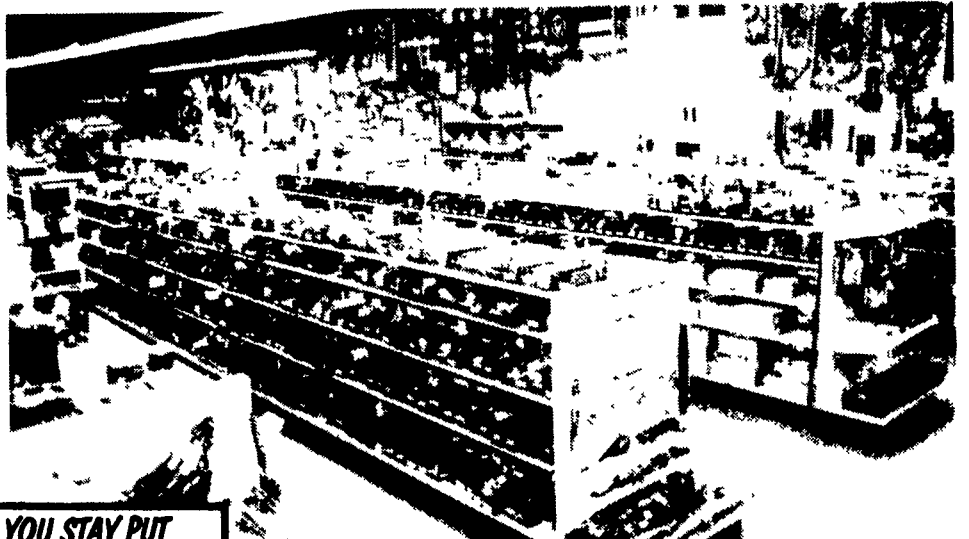
HOOBER

HOOBER EQUIPMENT, INC.
Middletown, DE
(302) 378-9555

TWO LOCATIONS
The Saving Place

WE SHIP PARTS DAILY

Via UPS - PPSH - BUS - AIR FREIGHT, ETC.



CALL US...
It Could Be We Have It

Case
Authorized
UPS Station