

Platforms and Bulkheads

Ideal for lumberyards, contractors, utilities, oil field operations and fork lift applications involving heavy loading. The Omaha Standard Super Duty platform is a full 96" wide and available in standard lengths from 12'6" to 26'6". Floor options include wood, steel or steel over wood. Heavy duty structural steel channel throughout. Stake pockets placed on 24" centers and sized to fit 2 x 4" stakes, with a steel banding rail welded to the outside of the stake pockets for securing the heaviest loads. Steel stake racks are also available.

The full clearance bulkhead features a full width steel mesh window. Tackle the tough jobs, team up with Omaha Standard's Super Duty Platform and Bulkhead.

Available at:

FARMERSVILLE EQUIPMENT INC.

RD 4, East Farmersville Road
Ephrata, PA 17522
Located in the Village of Farmersville,
Lancaster County
717-354-2150

Omaha Standard

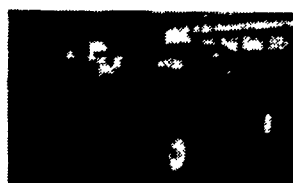
FOR SALE



1986 Chevy Silverado C30 Dual Wheel, Crew Cab, 454 Auto, PS, PB, Air, PW, PDL, Cruise, Tilt, AM/FM Cass. Stereo, Dual Tanks, 5000 Miles With Bal. of Factory Warranty *16,900



1985 Ford F250 HD 3/4 Ton Super Cab, Pickup 351 Auto, PS, PB, Air, AM/FM Dual Tanks, 8800 G.V.W., 9,000 Miles, Like New *10,995



1985 Ford F250, 4x4, 351 4-Speed, PS, PB, Dual Tanks, Lock Out Hubs, 33,000 Miles *9,600



1985 Ford F350 Dual Wheel With 12 Ft. Eby Aluminum Cattle Body, 351 4-Speed, PS, PB, AM/FM, 11,000 GVW Package, Ex. Cond. *12,500



1984 GMC 3500 Dual Wheel, 12 Ft. Stake Body, 350 4-Speed, PS, PB, 10,000 GVW, Ex. Cond. *8,450



85 Ford F250 HD 3/4 Ton Pickup, 351 4-Speed, PS, PB, AM/FM, Dual Tanks, 8600 GVW, Including Fiberglass Topper, Ex. Cond. *8,150



1984 Ford F150, 4x4, 300 6 Cyl., Hd. 4-Speed, PS, PB, 6150 GVW, Blue & Silver *7,650



1984 Chevy HD C20, 3/4 Ton, 350 Auto, PS, PB, 8600 GVW, Reg. Gas, 40,000 Miles *6,950



1980 Toyota, 7 ft. Mini Stake Body, 4 Cyl., 4 Speed, 53,000 Miles. *2,750

A & J AUTO SALES

798 East Main Street - Rt. 322 East
Ephrata, PA 17522
717-733-2873

Mark VII - Pickups - Broncos - Bronco II - Stake Body - Crew Cab -

SHEEHY FORD LINCOLN MERCURY INC.

For All Your Farming Transportation Needs Through The F800 Series

BRONCOS DIESEL PICKUPS CHASSIS CAB CARGO VANS 4x4 RANGERS PICKUPS
BRONCO II SUPER CAB CREW CAB STAKE BODY BOX VANS XLT CUSTOM VANS

SHEEHY HOTLINE 717-272-7671

Unless This Emblem Is On Your Car Or Truck You Probably Paid Too Much



9-9 Daily
9-5 Sat.
717-272-7671

SHEEHY LEBANON

Parts Dept. Open
Daily 8-5
Sat. 8-12
717-273-8168

20th & Cumberland St., Lebanon

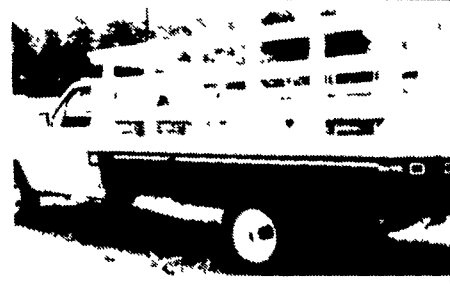


NOTICE

150 LEFT OVER TRUCKS

THOUSANDS OF DOLLARS IN DISCOUNTS WILL BE GIVEN AWAY BY SHEEHY

* Parts Hot Line 800-227-0272



Tempo - Cougar - Continental - Town Car - 4x4 - Box Van - Rangers -

Custom Vans - Lynx - Topaz - Diesel Pickups - Mustang - T Bird - Marquis - Grand Marquis - XLT -