

King's Hay

Kirkwood, Pa.
 Tuesday, Oct. 7, 1986
 Report supplied by Auction
 16 loads.
 Alfalfa, 85.00-104.00; Alfalfa Mix, 90.00-101.00, 1 at 132.00; Stubble Hay, 72.00; Timothy & Timothy Mix, 71.00-101.00; Grass Hay, 91.00; Ear Corn, 1 at 65.00.
 5 loads Straw, 91.00-99.00.

Chambersburg Hay

Chambersburg, PA
 Thursday, Oct. 9
 Report Supplied by Auction
 3 load Alfalfa, 105.00-109.00, 1 at 111.00; Brome Grass and Alfalfa, 120.00 and 130.00; 3 loads Timothy, 86.00-95.00.

Dewart Hay

Dewart, PA
 Monday, Oct. 6
 Report Supplied by Auction
 9 loads Hay, 51.00-87.00; Straw, 1 at 58.00; Wood, 22.00-38.00 load; 3 loads Corn, 55.00-63.00.

Keister's Hay

Middleburg, PA
 Tuesday, Oct. 7
 Report supplied by auction
 19 loads Hay. Mixed Hay, 50.00-110.00; Mulch, 42.50; 3 loads Starw, 75.00-92.50; 6 loads Ear Corn, 50.00-61.00; 1 load Rye, 3.20 bu.

Green Dragon Hay

Ephrata, PA
 Friday, Oct. 3
 Report supplied by Auction
 87 loads.
 Mixed Hay, 62.00-119.00; Timothy, 66.00-125.00; Alfalfa, 70.00-162.00; Straw, 73.00-107.00; Ear Corn, 55.00-67.00; Oats, 1.30-2.00 bu.; Alfalfa Seed, 70.00 bag.

Good's Hay

Leola, Pa.
 Wednesday, Oct. 8, 1986
 Report Supplied by Auction
 38 loads.
 Timothy, 72.00-125.00; Mixed Hay, 66.00-121.00; Straw, 74.00-111.00; Corn, 64.00-74.00; Rye, 3.70 bu.

Carroll Co. Hay

Westminster, MD
 Tuesday, Oct. 7
 Report supplied by Auction
 16 loads.
 Alfalfa, 2nd cutting, 105.00; Timothy and Orchard Grass, 105.00-127.00; Timothy and Alfalfa, 104.00; Mixed Hay, 92.50-108.00; Wheat Straw, 120.00, 1.50 bale; Oats, 1.60 bu.; Rye, 3.35 bu.

North Jersey Hay-Straw & Grain

Hackettstown, NJ
 Tuesday, Oct. 7
 Grass/bale 2 lots 1.75-2.00.

Omaha Weekly

Thursday, Oct. 9
 Report Supplied by USDA
 Slaughter steer and heifer prices ended the week steady with last weeks closing levels. Early week declines were erased by midweek advances as buyer demand continued good. slaughter cows and bulls closed steady.
 Estimated 5 day receipts of cattle this week compared to ac-

tuals of 6614 last week and last year. Slaughter steers accounted for 33 percent of this weeks supply, slaughter heifers 36 percent, slaughter cows 4 percent and feeder cattle 25 percent.

SLAUGHTER STEERS: Closing sales Choice 2-4 1100-1300 lbs. 59.00-60.50. Few Mixed Good and Choice 2-3 1050-1200 lbs. 57.50-59.50.

SLAUGHTER HEIFERS: Closing sales Choice 2-4 975-1100 lbs. 58.50-59.50. Few Mixed Good and Choice 2-3 925-1050 lbs. 56.50-58.50.

Average of LS 214 detailed quotations for Choice 900-1100 lbs. steers 58.92, 1100-1300 lbs. 59.76. Average cost of all slaughter steers this week 58.50. Average weight 1182 lbs. compared to 59.29 and 1147 lbs. last week. Average cost of all Slaughter Heifers this week 58.19, average weight 1033 lbs. compared to 58.26 and 1050 lbs. last week.

SLAUGHTER COWS: Breaking Utility and Commercial 2-4 38.50-39.75. High Cutter and Boning Utility 1-3 36.00-40.00. Low to average cutter 32.50-36.00.

SLAUGHTER BULLS: 1-2 1600-2300 lbs. 46.00-49.50. Low Dressing 42.00-46.00.

Jersey Shore Livestock Market, Inc.

Auction every Thursday
 Oct. 9, 1986
 Jersey Shore, Pa.
 Report supplied by Auction
 Return to Farm Calves 65.00-105.00.
 Good Veal 50.00-82.50.
 Common Veal 45.00-56.00.
 Good Steers 48.00-56.50.
 Common Steers 38.00-46.00.
 Commercial Cows 36.25-40.50.
 Cannors-Cutters 32.00-38.25.
 Shells 25.50-31.00.
 Good Heifers 42.00-51.50.
 Common Heifers 36.00-44.50.
 Good Feeders 54.00-62.50.
 Common Feeders 31.00-48.00.
 Bulls 40.00-48.50.
 Good Hogs 52.00-55.10.
 Sows 45.00-47.00.
 Roughs 35.00-40.00.
 Eggs \$.45-\$.78/doz.

Green Dragon Livestock Sales

Location: Ephrata RD 4. 1 mile N. on North State St., Ephrata.



COWS COWS COWS

SALE EVERY FRIDAY

Lots of good Northern Feeder & Stockers. Slaughter Cows - Bull Steer, Veal-lamb.

11:00 A.M.-Beef Sale 200-300 each week.
 1:00 P.M.-Dairy Sale.
 7:00 P.M.-Small Animal Sale.

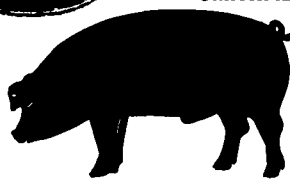
For Special Sales and Herd Dispersals on farm or at our barn or other market information call: Office 717-733-2444, Home 717-838-4318.

WALTER H. RISSER, Proprietor

All out of state and new buyers must have cash or certified check or current letter of credit from bank.



GWALTNEY of SMITHFIELD, LTD.



RECEIVING HOGS: LANCASTER COUNTY FARMERS

MONDAYS: McCoy's Branch Office, Bareville
WEDNESDAYS: (Next to Bawells Butcher Shop)
& FRIDAYS: on Butler Rd. 717-656-9668

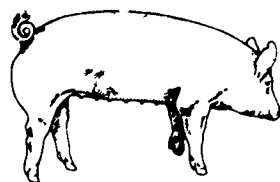
TUESDAYS: B & R Cattle
THURSDAYS: Marietta 717-426-3258

YORK COUNTY FARMERS

MONDAYS: Stewartstown 717-993-2564
TUESDAYS: Thomasville 717-792-2248 or 9836

Contact for information:

Ed Herrmann, 717-284-3203
 or Charlie Kauffman, 215-593-5674
 Future forward contracts available



EMERY'S BUYING STATION

OPEN TO RECEIVE YOUR MARKET HOGS

AT THE GREEN DRAGON MARKET RD 4, EPHRATA, PA 17522 1 MILE NORTH OF EPHRATA ON NORTH STATE STREET.

HOURS: MONDAY, TUESDAY, and WEDNESDAY 6:00 A.M. to 11:30 A.M.
 215-458-5677 Residence
 717-733-9648 Office

YOU ARE PAID FOR YOUR HOGS IMMEDIATELY

Ken & Lois Emery, Proprietors

HAY & STRAW SALE

12:00 Noon
 Every Wednesday
 Westend of Avondale at the intersection of Baltimore Pike and Route 41.

Harvey Z. Martin
 215-268-3604 (Office)
 215-445-5303 (Residence)

KING'S AUCTION

KIRKWOOD

Hay, Straw and Grain Auction
EVERY TUESDAY

12:00
 Located Rt 472 5 miles south of Quarryville or 6 miles north of Oxford at Shaub's Auction House

Lloyd H. Kreider,
 Auctioneer
 AU-000513L

No out of state checks
ALL TRUCKERS AND FARMERS WELCOME

MELHORN SALES, SERVICE, TRUCKING CO.

1010 W. Main St., Mount Joy, PA 17552

The only full service company, in this area, to handle the total needs of the poultrymen.

Which Includes:

- Area distributor of a complete line of Bio-Guard Poultry & Swine sanitation products. Including: sow shampoo, field disinfectants, hatchery disinfectants, egg wash.
- DEKALB chicks & started pullets sold by Nelson Groff & Harold Mishler.
- Complete loading & unloading of pullets & spent hens.
- New modern dollie equipment to move your pullets fast and efficiently with minimum stress to the pullets.

Place Your Confidence In A Full Service Company That Wants To Be Worthy Of Your Business

For More Information Phone:
717-653-1102

Monday - Friday 8:30 AM - 4:00 PM

