

Open Breeding Shows

(Continued from Page B18)

- DORSET**
Spring Ram Lamb
 1 Downsborough/Windswept 2 Wind swept/Downsborough/PSU 3 Margaret Herr
Fall Ram Lamb
 1 Margaret Herr 2 Kenneth T Moore/Son 3 Susan Ramsay
Pair of Ram Lambs
 1 Downsborough/Windswept Farm 2 Kenneth Moore/Son 3 Margaret Herr
Ram, 1 Yr and Under 2
 1 Mike Koehler 2 Kenneth Moore/Son 3 Jennifer Lynn Hoke
Champion Ram
 Windswept Farm
Reserve Champion Ram
 Mike Koehler
Ewe, Spring Lamb
 1 Skip and Cheryl Heeg 2 Scott Kuzemchak 3 Kenneth Moore/Son
Ewe, Fall Lamb
 1 Margaret Herr 2 Scott Kuzemchak 3 Kenneth Staver Family
Fall Sale Ewe Lamb
 1 Dick Kuzemchak Family 2 K Staver Family 3 Dick Kuzemchak Family
Pen of 3 Ewe Lambs
 1 Downsborough/Windswept Farm 2 Margaret Herr 3 Kenneth Moore
Ewe, 1 Yr and Under 2
 1 Kenneth Moore 2 Kenneth Staver Family 3 Edgar Thompson
Bred Ewe Sale
Ewes 1 Yr and Under 2
 1 Wade Brothers 2 K Staver Family 3 Johnson Brothers
Sale Ewe with Lamb at Side
 1 D L Grimes/Son 2 Telhazon Farm/B&M Wade 3 Wade Brothers
Pair of Yearling Ewes
 1 Edgar Thompson 2 Margaret Herr 3 Mike Koehler
Champion Ewe
 Skip & Cheryl Heeg
Reserve Champion Ewe
 Scott Kuzemchak
Sale Champion Ewe
 Wade Brothers
Sale Reserve Champion
 Scott Kuzemchak
SHROPSHIRE
Spring Ram Lamb
 1 Peter D Ambra 2 Peter D Ambra 3 David Harpster
Ram Fall Lamb
 1 Fred W Heaton & Family
Pair of Ram Lambs
 1 Peter D Ambra 2 Kenneth Moore 3 David Harpster
Ram, 1 Yr and Under 2
 1 Robert Kinsmore 2 Kenneth Moore 3 Kenneth Moore
Champion Ram
 Robert Dinsmore
Reserve Champion Ram
 Peter D'Ambra
Ewe Spring Lamb
 1 Peter D'Ambra 2 Kenneth Moore 3 Peter D'Ambra
Ewe, Fall Lamb
 1 Peter D'Ambra 2 Peter D'Ambra 3 Kenneth Moore
Sale Ewe Lamb
 1 Wey Shropshires 2 Bryan Miller 3 Bryan Miller
Pen of 3 Ewes
 1 Peter D'Ambra 2 Kenneth Moore 3 Wey Shropshires
Ewe 1 Yr and Under 2
 1 Peter D'Ambra 2 Kenneth Moore 3 David Harpster
Bred Ewe Sale Ewes,
1 Yr and Under 2
 1 Kennedy Farms 2 Kennedy Farms 3 Wey Shropshires
Pair of Yearling Ewes
 1 Peter D'Ambra 2 Fred Heaton & Family 3 David Harpster
Champion Ewe
 Peter D'Ambra
Reserve Champion Ewe
 Kenneth Moore
Exhibitor's Flock
 1 Peter D'Ambra 2 Kenneth Moore 3 David Harpster
Champion Sale Ewe
 Kennedy Farms
Reserve Champion Sale Ewe
 Wey Shropshires
ROMNEY
Spring Ram Lamb
 1 John & Jean Woodward 2 John & Jean Woodward 3 John & Maria Gifford
Fall Ram Lamb
 1 John & Jean Woodward
Pair of Ram Lambs
 1 John & Jean Woodward 2 Sally Young 3 Springfield Farms
Ram, 1 Yr and Under 2
 1 John & Jean Woodward 2 Sally Young 3 Springfield Farms
Champion Ram
 John & Jean Woodward
Reserve Champion Ram
 John & Jean Woodward
Ewe Spring Lamb
 1 John & Jean Woodward 2 Sally Young 3 John & Jean Woodward
Ewe, Fall Lamb
 1 John & Jean Woodward 2 John & Jean Woodward
Pen of 3 Ewe Lambs
 1 John & Jean Woodward 2 Springfield Farms 3 Sally Young
Ewe, 1 Yr and Under 2
 1 John & Jean Woodward 2 John & Jean Woodward 3 Springfield Farms
Pair of Yearling Ewes
 1 John & Jean Woodward 2 Springfield Farms 3 Lucy Conant
Champion Ewe
 John & Jean Woodward
Reserve Champion Ewe
 John & Jean Woodward
Exhibitor's Flock
 1 John & Jean Woodward 2 Springfield Farms 3 Sally Young
SOUTHDOWN
Spring Ram Lamb
 1 Shaunna Jones 2 Peggy McCrumb 3 Peggy McCrumb
Fall Ram Lamb
 1 W G Carpenter and Son 2 W G Carpenter and Son 3 Jenny Zerby
Pair Ram Lambs
 1 W G Carpenter and Son 2 Shaunna Jones 3 Peggy McCrumb
Yearling Ram
 1 Melissa Trostle 2 Glen Best and Sons 3 David Harpster
Champion Ram
 Shaunna Jones

ARMSTRONG FARM MUSCLE

All Orders Over \$250 Delivered Free To Your Farm! (Orders Under \$250... Only A Small Extra Fee)



We Install Tires On Your Farm

- Centre Hall • Williamsport
- Sunbury • Allentown
- North Penna. • New Jersey
- Northern Maryland

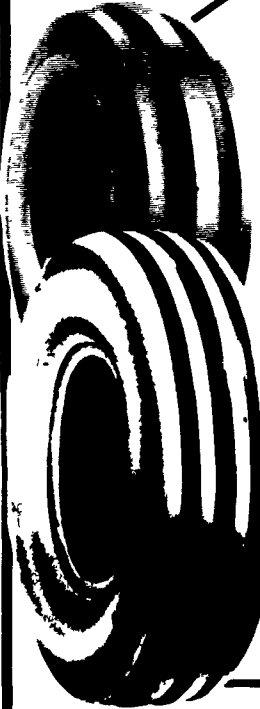
Ask About Our 4 Year Guarantee On Rear Tires Strongest In The Country



FREE MOUNTING ON Super Hi-Power Lug Radials

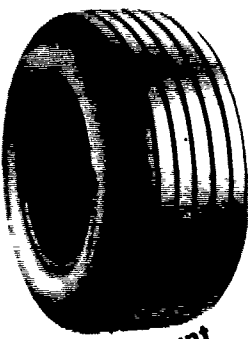
14 9R28 10 Ply	\$325 00
16 9R28 10 Ply	\$399 00
18 4R34 6 Ply	\$399 00
16R38 6 Ply	\$429 00
18 4R38 6 Ply	\$459 00
18 4R38 8 Ply	\$529 00
18 4R26 10 Ply	\$449 00
20R34 8 Ply	\$639 00
20 8R38 8 Ply	\$649 00
20 8R38 10 Ply	\$699 00

FRONT TRACTOR Shipped UPS - No Charge!



★ 3-RIB ★	
400 12	\$22 00
400 15	\$24 00
400 19 4 Ply	\$29 00
500 15	\$31 00
550 16 4 Ply	\$33 00
550 16 6 Ply	\$36 00
600 14 6 Ply	\$52 00
600 16 4 Ply	\$37 00
600 16 6 Ply	\$41 00
650 16 6 Ply	\$42 00
75L 15 6 Ply	\$50 00
750-16 8 Ply	\$54 00
750 15 6 Ply	\$50 00
750-18 6 Ply	\$64 00
750 20 6 Ply	\$77 00
9 5L 15 6 Ply	\$55 00
9 5L 15 8 Ply	\$60 00
10 00-16 6 Ply	\$80 00
11Lx15 8 Ply	\$75 00
1100 16 8 Ply	\$110 00
14L 16 1 8 Ply	\$160 00
★ 4-RIB ★	
11L 15 8 Ply	\$80 00
10 00 16 6 Ply	\$80 00
10 00 16 (TL) 6 Ply	\$95 00
10 00 16 (TL) 8 Ply	\$106 00
11 00 16 6 Ply	\$108 00
11 00 16 (TL) 6 Ply	\$110 00
11 00 16 8 Ply	\$108 00
11 00 16 (TL) 8 Ply	\$123 00
14L 16 1 (TL) 6 Ply	\$180 00
14L 16 1 8 Ply	\$164 00
16 5L 16 1 (TL) 8 Ply	\$250 00
★ 5-RIB ★	
1100x16 12 Ply Tubetype	\$135 00
1100x16 12 Ply Tubeless	\$150 00

WAGON TIRES



26 1200x12 4 Ply	\$49 00
8 51x14 6 Ply	\$41 00
9 5Lx14 6 Ply	\$44 00
9 5Lx14 8 Ply	\$49 50
9 5Lx15 6 Ply	\$42 00
9 5Lx15 8 Ply	\$44 00
11Lx14 6 Ply	\$49 00
11Lx15 6 Ply	\$43 00
11Lx15 8 Ply	\$47 00
11Lx15 10 Ply	\$80 00
1000x15 8 Ply	\$80 00
11Lx15 8 Ply Tubeless	\$50 00
11Lx16 8 Ply	\$58 00
11Lx16 10 Ply Tubeless	\$74 00
12 5Lx15 10 Ply	\$75 00
12 5Lx16 14 Ply	\$85 00
12 5Lx15 12 Ply	\$87 00
14Lx16 1 12 Ply	\$140 00
16 5Lx16 1 10 Ply Tubeless	\$160 00
25x7 50x15 4 Ply Tubeless	\$44 00
25x7 50x15 6 Ply Tubeless	\$49 00
27x9 50x15 4 Ply Tubeless	\$53 00
27x9 50x15 6 Ply Tubeless	\$60 00
27x9 50x15 8 Ply Tubeless	\$65 00
31x13 50x15 6 Ply Tubeless	\$88 00
31x13 50x15 8 Ply Tubeless	\$99 00

Special Discount \$5.00 OFF These Prices

• WAGON TIRES SHIPPED UPS - NO CHARGE! •

ARMSTRONG

Loader-Dozer



★ TUBELESS ★	
16 9x24 8 Ply	\$265 00
16 9x24 10 Ply	\$330 00
17 5Lx24 6 Ply	\$245 00
17 5Lx24 8 Ply	\$270 00
15 5x25 12 Ply	\$310 00
17 5x25 12 Ply	\$440 00
19 5Lx24 10 Ply	\$390 00
19 5Lx24 12 Ply	\$430 00
12Lx24 12 Ply	\$500 00
20 5x25 12 Ply	\$643 00
23 5x25 12 Ply	\$960 00
23 5x25 16 Ply	\$1 000 00

ARMSTRONG

★ TUBE TYPE ★	
14 9x24 6 Ply	\$200 00
14 9x24 8 Ply	\$220 00
16 9x24 6 Ply	\$220 00
16 9x24 8 Ply	\$235 00
16 9x24 10 Ply	\$280 00
16 9x24 12 Ply	\$240 00
17 5Lx24 8 Ply	\$260 00
16 9x28 8 Ply	\$340 00
18 4x28 10 Ply	\$260 00
20 5x25 12 Ply	Call For Quote
23 5x25 16 Ply	\$225 00
1300x24 10 Ply	\$245 00
1400x24 10 Ply	\$255 00
1400x24 12 Ply	\$280 00

ARMSTRONG

ARMSTRONG

8 3x24	\$100 00
9 5x24	\$112 00
14 9x24 6 Ply	\$200 00
16 9x24 6 Ply	\$210 00
18 4x16 1 6 Ply	\$245 00
18 4x26 6 Ply	\$360 00
13 6x28 6 Ply	\$225 00

USED GRASS TIRES IN STOCK!

SKID LOADER TIRES



570x12 4 Ply	\$40 00
23 850x12 4 Ply	\$47 00
27 850x15 4 Ply	\$51 00
27 850x15 6 Ply	\$65 00
27 1050x15 6 Ply	\$70 00
700x15 6 Ply	\$65 00
750x15 6 Ply	\$68 00
10 16 5 6 Ply	\$80 00
12 16 5 8 Ply	\$120 00
Steel Shield	
10 16 5 6 Ply	\$95 00

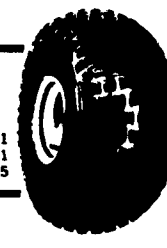
Above Tires Shipped To You FREE

CONTRACTOR F-3

11Lx15 8 Ply	\$80 00
11Lx16 8 Ply	\$92 00
11Lx16 10 Ply	\$98 00
750 800x16 10 Ply	\$80 00
11Lx16 12 Ply	\$130 00
145 75 16 1 10 Ply	\$225 00

3 WHEELER TIRES

22x11 00 8	\$38 01
25x12 9	\$54 71
18x950 8	\$30 65



ARMSTRONG FARM TIRES

Hi Power Lug



11 2x24 4 Ply	\$106 00
11 2x24 6 Ply	\$125 00
14 9x24 4 Ply	\$161 00
14 9x24 6 Ply	\$172 00
14 9x24 8 Ply	\$200 00
16 9x24 6 Ply	\$200 00
16 9x24 8 Ply	\$220 00
14 9x26 6 Ply	\$180 00
18 4x26 6 Ply	\$247 00
23 1x26 8 Ply	\$525 00
11 2x28 4 Ply	\$120 00
12 4x28 4 Ply	\$137 00
13 6x28 4 Ply	\$150 00
13 6x28 6 Ply	\$165 00
13 6x28 8 Ply	\$195 00
14 9x28 4 Ply	\$165 00
14 9x28 6 Ply	\$185 00
16 9x28 6 Ply	\$225 00
16 9x28 8 Ply	\$245 00
16 9x30 6 Ply	\$240 00
18 4x28 6 Ply	\$300 00
18 4x30 6 Ply	\$270 00
23 1x30 8 Ply	\$650 00
24 5x32 10 Ply	\$775 00
16 9x34 6 Ply	\$270 00
18 4x34 6 Ply	\$310 00
18 4x34 8 Ply	\$335 00
20 8x34 6 Ply	\$479 00
20 8x34 8 Ply	\$510 00
23 1x26 10 Ply	\$600 00
23 1x34 8 Ply	\$689 00
11 2x38 4 Ply	\$147 00
12 4x38 4 Ply	\$175 00
13 6x38 4 Ply	\$185 00
13 6x38 6 Ply	\$205 00
14 9x38 6 Ply	\$224 00
15 5x38 6 Ply	\$235 00
15 5x38 8 Ply	\$260 00
16 9x38 6 Ply	\$295 00
16 9x38 8 Ply	\$325 00
18 4x38 6 Ply	\$340 00
18 4x38 8 Ply	\$380 00
20 8x38 8 Ply	\$520 00

Ask About Special Mounting Prices!

Small Rear Farm Tires

750x20 4 Ply	\$59 95
750x24 4 Ply	\$64 95
8 3x24 4 Ply	\$82 00
9 5x24 4 Ply	\$92 00
11 2x34 4 Ply	\$142 00
11 2x36 4 Ply	\$144 00
12 4x24 4 Ply	\$123 00
12 4x36 4 Ply	\$175 00
13 9x36 6 Ply	\$200 00

Route 230 West

Mt Joy PA

MUMMAU TIRE

Serving Farmers In Penna. New Jersey Northern Maryland and Delaware

Out Of State 717-653-1260 In Penna. 1-800-222-1729

(Turn to Page B21)