

## Public Auction Register

Closing Date Monday 5:00 P.M.  
of each week's publication

**SAT NOV 15 - Feed Mill Contents, Farm Supplies, Office Furniture, few Antiques.** Located along Maple Grove Road, 1 block E. of Rt. 625 in the village of Bowmansville, Brecknock Twp., Lanc. Co., PA. David B. Hurst Feedmill, Owner. LeRoy S. & Paul W. Horst, Auctioneers.

**SAT NOV 15 - 12 Noon.** 283 Acre Farm. 7746 Cumberland Hwy., Chambersburg, PA. Located partly in Letterkenny Twp. & Lurgan Twp., Franklin Co., PA. By The United States Bankruptcy Court for the middle district of PA. For Alfred J. & Helen L. Miller Ebersole & Shoop, Auctioneers.

**TUES. NOV. 18 - 74 Acre Dairy Farm, Farm Machinery & Personal Property.** Wilbur W. & Ruth M. Kreider, along Rettew Mill Rd., Southwest of Ephrata, R.D.4, Litzitz, Pa Auctions Kline, Kreider & Good

**WED. NOV. 19 - 3PM** Antiques, HH, Guns, Coins. Lincoln Fire Hall, 1425 Lincoln Hgts. Ave., Ephrata, PA. Terms by: Grace R. Hackman, T. Glenn & Timothy G. Horst, Auctioneers.

**THURS. NOV. 20 - Farm Eq. & HH.** Along Eastern School Rd., 1 mi. S. of New Holland. Desmond Kaye, Owner. Nevin Martin & Lewis Groff, Auctioneers

**FRI. NOV 21 - 5:30PM** Gap Auction. Antiques & HH sold at every auction. Located off Rt. 41, Lancaster Turkey Hill Minit Mkt., cross RR

bridge. Ira Stoltzfus & Son, Auctioneers.

**FRI NOV 21 - 6:30PM** Feeder Pig & Feeder Cattle. Keister's Middleburg Auction, along Rt 522, Middleburg, PA.

**SAT. NOV. 22 - 10:30AM** Big Milk Eq. 1 Ac. Bldg., Forage & Liq. Manure Spreader. For: J.H. Van Cleef, Jr., 2.5 mis. SW of Middlebush, NJ (New Brunswick Area), 13 mis N of NJ Turnpike, use Exit 10 to Rt. 287 N., take Exit 6 (Easton Ave.) left off ramp to Rt. 527-S. for half mi. turn S. by Amco gas sta. on to Cedar Grove Lane Rt. 619-S., go 3 mis. to light, turn W. on Rt 514-W go half a mi., turn S on Grouser Rd., go half

mile to Van Cleef Rd. to Dairy Complex. From Flemington, NJ, take Rt 514 E off of Rt 202, to Millstone, NJ, to Rt 533-S, go 3 mis. & turn E. onto

Blackwell Mills Rd. to Van Cleef Rd. Col. Fred R Daniel Auctions, Inc

**SAT. NOV. 22 - 1PM** 74 Acre Farm 9 mis. S. of Lancaster or 4 1/2 mis. N of

Buck. Off Rt. 272, E. of Pearsy Rd., 3/4 mi. to sale Providence Twp., Lanc Co Terms by: Ira T & Mary H. Harnish Kreider & Kline Auct Service.

**FRI. NOV. 28 - 5:30PM** Gap Auction. Antiques & HH sold at every auction. Located off Rt. 41, Lancaster Turkey Hill Minit Mkt., cross RR bridge Ira Stoltzfus & Son, Auctioneers

**SAT NOV. 29 - 11AM** Horse Sale. Keister's Middleburg Auction, along Rt. 522, Middleburg, PA.

## PUBLIC AUCTION

**FRI., OCTOBER 17, 1986**  
2 P.M.

Located Ward Fetzer residence, Rebersburg, PA, road between Rebersburg and Smullton. Behind school house.

### MACHINERY

JD 60 gas, power steering, 3 pt. hook up; Oliver 2R corn planter, 3PTH; Oliver 2B 14" trailer type, hydraulic lift; Oliver 3B 14" trailer plow w/hyd. lift; 2R tractor cultivator; 3 chicken crates; 3 hydraulic cylinders; cement mixer; cutoff saw; gravity box and wagon; flat bottom wagon w/high sides; wagon running gear; 2 wheel trailer from PU bed; dump trailer; lime sower; 1 gal. driven manure spreader; 62T baler w/thrower; JD 4 bar hay rake; (2) 8' disks; steel roller; 12' harrow; JD 11 hoe disk grain drill on steel; Oliver 1R corn picker; old AC combine; home made camping trailer, sleeps 4; dry oak lumber, mostly 18' long; crib of dry corn; 1500 bu. round corn crib; 26' bale elevator; King Wise w/Briggs & Stratton gas motor; 1 acre lot w/barn in Rebersburg.

Leon J. Smith, Jr. & Son  
Auctioneers  
AU000868-L

Owner & auctioneer not responsible for accidents.  
Millheim, PA 16854

## Dairy and Livestock Sales

### CHERRYHURST (Ray & Steve Volles) MH & BH DISPERSAL

**FRIDAY, OCT. 17 - 11:00 A.M. - Marietta, NY**  
80 COWS

16 Bred Heifers - Calves Born Since May DHIA RHA 18498 3.5 655  
A Good Solid Herd of Homebred Cattle!

#### TOP MILK RECORDS

5 Cow selling over 25,000 to 28,557  
6 others selling 22,000 - 24,999  
13 others selling over 20,000 to 21,999

And Many 2 and 3 yr olds just reaching their potential!

#### LOTS OF FALL MILK

7 Sell Fresh in Aug  
8 Sell Fresh in Sept  
10 Due in Oct  
11 Due Nov - Dec

#### HIGH FAT RECORDS

3 Selling Over 900 F to 1026 F  
10 Others Over 800 F  
11 More Over 700 F

#### BRED TO TOP BULLS

Willowcrag Intrepid - 14  
Glenview Joe-ET - 11  
Dreamstreet Odyssey - 10  
Geran Enchanter - 8  
MGM Gambler - 7

#### A SAMPLE OF THE TOP COWS SELLING

\* VG-86 by G V Star 5-10 254d 16236 3 5 568 (inc) - Sells fresh  
\* VG w/4y 291 21,096 3 4 721 - Sells fresh, peaked 114th Also her dtr w/18,795 - 2 yr and 1st 3 tests avg 92# this year  
\* GV Star w/over 25,000 sells fresh in June w/Arrow calf  
\* Fresh 3y Tradition and her calf Made 15,000+ at 2 yr  
\* A 3 yr w/21,066 3 5 742 Peaked 118th this year Sells with Shane dtr due sale time & calf by Banker  
\* Top 3 yr old Made 23,546 4 0 934 at 2 yr due again Nov

\* 4-7 365 28,557 3 4 980 Fresh again w/3 months over 125# Sells bred to Intrepid  
\* Top record of 27,538 3 5 959 sells w/2 yr. old dtr  
\* Milky family - per Hillary dtr w/20,000 at 2 yr sells with her 22,000+ dam and fresh 2 yr dtr proj to 23,000 M  
\* 18,000 lb 2 yr sells due to Intrepid Also her 20,000 lb dam  
\* Many other 2 & 3 yr olds making top records  
Tested for Interstate - Vaccinated - Pregnancy Checked

Sale At The Farm: Located right on Route 20, about 7 miles west of Lafayette interchange of I-81. Lafayette is about 12 miles south of Syracuse.

**Cherryhurst Holsteins**  
Ray & Steven Volles  
RD 1  
Marietta, N.Y. 13110  
315-673-2281

**BACKUS ASSOCIATES, INC.**  
Sale Managers & Auctioneers  
AU-000034-L P.O. Box 424  
Mexico NY Elizabethtown PA 17022  
315 953 7231 717 367 9236

## COMPLETE AUCTION FAMILY FARM OPERATION OF RALPH & HAZEL CARR

Wellsboro, (Tioga County), Pa.

**TUESDAY, OCTOBER 21st At 11:00 A.M.**

Located: 1 1/2 mi. south of Wellsboro, Pa., at end of Pearl St. on Dean Hill.

### CATTLE

#### 38 Head Mature Home Raised Grade Holsteins 38

Few Fall fresh cows, bal. bred to freshen Jan., Feb., Mar. Mostly a young, high producing dairy w/cows that peaked over 100 lbs. Sire Power breeding. Blood & TB tested ready for interstate - vacc. for shipping fever - preg. ckd.

### MACHINERY

2-85 White Diesel tractor, over/under, ROPs & canopy, 2 hyds., 2 pto. 18.4x38 rears, 11Lx16" fronts, 1 pr. rear wts., 6 front wts. (1096 hrs.); 7700 Ford Diesel tractor, dual power, load monitor, 2 hyds., 2 pto., 1 pr. rear wts., 16.9x38 rears, 8 front wts., (new 1981); Super 717 NH forage harvester, single row corn, square spout, flotation tires w/717 hay pick up head (nice); Lamco 14' forage box w/1065 JD wagon, flotation tires, ext. hitch; FB99 Gehl Hi-Throw blower Sn 17413 (like new); 350 JD hay & grain elevator 62' long, 2 Hp. motor; AC 5x16" hyd. auto-reset, cushion coulters, hyd. hill side hitch (reducible to 4 bottom); H & S slant-bar feeder wagon (1 yr. old); 9-E M C 9' rotary scythe mower; 256 NH rubber tine rake, traction tires; 268 NH baler w/53A thrower, hyd. directional control; 3 kicker boxes w/AC, NH, Kewanee gears; 36' Little Giant hay & grain elev., hay chute & corn hopper, 1.5 Hp. mtr.; 34' of 9" blower pipe w/deflector, #5 Oliver single-row picker; 1240 JD plateless 4-row planter, dry fert. (one of a kind); 13-disc Ontario grain drill; 10 1/4" AC transport disc harrow; 12' Pittsburgh harrow; H & S spreader, hyd. drive, hyd. end gate, Gratz chain (all but new); 2 fuel storage tanks w/pumps; Behlem 16' diameter corn crib.

### BARN EQUIPMENT

Patz barn cleaner w/unit - approx. 100'; Jamesway shuttle unit w/approximately 2-40' sections; 30 drinking cups; Jamesway stanchions; 4 metal gates; Int. weed chopper fencer; Sunbeam clippers (new); wheelbarrow; feed cart; milk scales; neck chains; forks, shovels, brooms, etc.

### MILK HOUSE EQUIPMENT

400 gal. Zero bulk tank & compressor; Zero dumping station w/50' hose; Surge Alamo 100 milker pump, 4.5 Hp. mtr.; hot water heater; dryer; 2" vacuum line; 3 Westfalia 60#-pail milker units w/bio claws.

### PRODUCE

Approx. 12,000 1st & 2nd cutting (to be sold in lots); 10' corn silage in 14' silo; 4 lots standing corn (8A, 10A, 5A, 5A.)

NOTE: After many prosperous years of farming, Mr. & Mrs. Carr have decided to retire. You will find a money making herd here and a good, clean line of well-kept late model machinery.

TERMS: Cash or good check sale day. (Local bank financing w/3 days prior approval).

**Robert M. Shaylor Sales**

515 Elmira St., Troy, Pa. 717-297 3278

Pub Shaylor  
Ph 717-297 3278  
Barn 717-297-2494  
AU833-L

Reputable Sales Service  
Licensed - Bonded

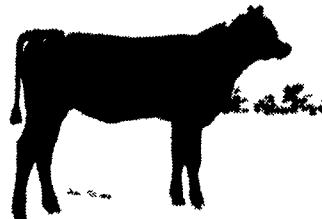
Bob Garrison  
717 297 3073

## PENN STATE UNIVERSITY'S

### 75th ANNIVERSARY SALE

**Saturday, October 25, 1986 - 2 P.M.**

University Beef & Sheep Center on Campus ★ University Park, PA  
Featuring the entire Class of 1986

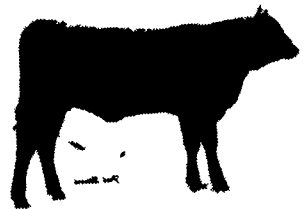


**P S PRINCESS 334 615**

A February 20th daughter of the All American Reserve Grand Champion Wrangler from a dam by the twice All American Sire of the Year Pine Drive Big Sky Her dam is a maternal sister to both P S Sasquatch and the All American Supreme Champion P S Princess 60E 117

**P S PRINCESS 219 630**

An April 2nd daughter of the reigning Denver Grand Champion and All American Sire of the Year New Yorker from a dam by the All American Supreme Champion P S Power Play from the great Princess family that produced Continental P S Sasquatch and P S Princess 60E 117



**P S PLAYMATE 203 602**

The greatest brood cow prospect ever born at Penn State! Sire by Pine Drive Big Sky from a flush sister to P S High Pockets River Hill Miss Genes and River Hill Playmate A full sister in blood to River Hills Power Gene One half interest and full possession sells

**P S ELEGANT NORTHERN 401 616**

A February 20th daughter of the All American Reserve Grand Champion Wrangler from a top two-year old dam by Pine Drive Big Sky from the family that produced P S Great Northern 064 the sire of P S Franco A three quarter sister to two of the three members of the 1986 All American Get of Sire

## IN THE PENN STATE TRADITION

### P S DECLARATION

A herd sire in the tradition of P S Power Play P S High Pockets P S Sasquatch P S Franco and many more Sired by Premier Independence from the great R&J Errolline 2430 This February 16th herd sire prospect is destined for breed greatness!

**4 HERD SIRES**  
Including two maternal brothers to P S High Pockets by New Yorker and Knockout

**20 SHOW HEIFERS**  
The class of 1986 - ideal Junior project heifers who will make great cows!

### Buyer's Choice of the P S Princess Family

**P S PRINCESS 330 605**

Projected EPDs Weaning +39.0 Milk +1.9 Yearling +68.8 A January 22nd daughter of P S High Pockets from a dam by Big Sky Her second dam by P S Power Play is a maternal sister to P S Sasquatch and the All American Supreme Champion P S Princess 60E 117

**P S PRINCESS 026 610**

Projected EPDs Weaning +38.1 Maternal +4.1 Yearling +65.7 A February 5th daughter of P S High Pockets from the granddam of P S Princess 330 605 Her dam is a daughter of the All American Supreme Champion P S Power Play and a maternal sister to the All American Supreme Champion P S Princess 60E 117 Bred to be a super producer!

### Buyer's Choice of the P S Blanche Family

**P S BLANCHE 105 624**

Projected EPDs Weaning +36.3 Maternal +8.8 Yearling +59.0 A March 9th daughter of Pine Drive Big Sky from a dam by P S Sasquatch who is a maternal sister to the All American Supreme Champion P S Power Play This super prospect has two past All American Produce of Dam award winners in her pedigree tabulation

**P S BLANCHE T136 625**

Projected EPDs Weaning +21.9 Maternal +4.1 Yearling +53.9 A March 15th daughter of the twice All American Sire of the Year Pine Drive Big Sky from a dam by the twice All American Sire of the Year Early Sunset Emulous 60E Her second dam is a maternal sister to P S Power Play who teamed with him to win the All American Produce of Dam award

The herd that produced P S Power Play, P S High Pockets, P S Sasquatch and P S Franco.

Dr. Erskine Cash  
Purebred Coordinator  
(814) 863-3662

Pennsylvania State University  
324 Animal Industries Bldg.  
University Park, Pa. 16802

Donnie Nichols  
Herdsman  
(814) 863-0831

Eric Lorenz, Ass't Herdsman

For your free reference catalog of this Penn State 75th Anniversary Sale, address: Tom Burke/Dick Beck, Sale Managers, AMERICAN ANGUS HALL OF FAME at the World Angus Headquarters, Smithville, MO 64089 • (816) 532-0811