

**"LAUSCH MOWER SERVICE"
PUBLIC SALE**

**Of Tractors, Mowers,
Small Engine Parts,
Power & Hand Tools**

EPHRATA, PA.
THURS. EVE., OCT. 16, 1986
At 3 P.M.

Located at 541 North State St.,
Ephrata, Lancaster Co., Pa.

ALLIS-CHALMERS TRACTOR (Model CA);
Hydraulic Lift, Front End Loader, Plow &
Snow Plow; 1975 CHEV. 1/2 TON PICK-UP
TRUCK with Capper; JACOBSEN GARDEN
TRACTOR (with Hydraulic Lift); BED KNIFE
GRINDER; REEL TYPE MOWER GRIN-
DER; AIR COMPRESSOR; ACETYLENE
TORCH; ELECTRIC WELDER; DRILL
PRESS; Table Sander; Chain Hoist; Jig Saw;
Floor Jack; PONY SPRING WAGON.

Mowers - Chain Saws - Edgers

Snow Blower; Weed Eaters; Wright Blade
Saw; Chain Saws; Hedge Trimmers; Poulan
Pump; Gas Engines; Mower Decks.

**Full Line New Small
Engine Parts**

BRIGGS & STRATTON - TECUMSEH -
POULAN; Saw Chains; Ignition Parts; Repair
Manuals; Micro Film Reader.

Power & Hand Tools

Drills; Battery Chargers; Air Drill; Impact
Wrench; Micrometers; Socket Sets; Wren-
ches; Ridge Reamers; Vise; Clamps; Splitting
Wedges; Tool Cabinets; Axes; Bolt Cutters;
Circular Saw; Drawing Knife; Garden Tools;
Planes; Ice Tong; 2 Man Saw; Single Trees;
Log Chains; Tobacco Shears.

Pony Saddle, Harnesses.

ANTIQUES- Jelly Cupboard; Corn Sheller;
Oak Slant Top Desk; Park bench; Slaw Board;
Iron Kettles; Porch Rocker.

Terms By
SUSAN M. LAUSCH

T. Glenn Horst, Auct.
717-859-1331 - AU000438L
Timothy G. Horst, Auct.
717-738-1245 - AU001767L

**FALL GUN
SALE**

MONDAY, OCT. 20, 1986
Starting at 6:00 P.M.
Inspection from 1:00 P.M.

Springfield Flintlock Muskets - Charleville
Flintlock Muskets incl. Dragon Model -
Springfield & Bridesburg Percussion Muskets
- Civil War Carbines - several Colt Pistols incl.
Cloverleaf & Army Models - Remington & Colt
Derringers - Military Rifles & Carbines -
Modern Shotguns & Rifles - Modern Automatic
Pistols & Revolvers - Decoys - Powder Horns -
Pocket Knives - Reference Books - Ammuni-
tion - Accessories.

CALL OR WRITE FOR
ILLUSTRATED SALE BROCHURE



717/898-7284
Located off Route 72, 7 miles North of
Lancaster, Pa. on Graystone Road.
10% BUYER'S PREMIUM



PUBLIC AUCTION
WEDNESDAY, OCTOBER 22, 1986
4:30 P.M.

Location: 7 miles Northeast of
Klingerstown, Pennsylvania, 1/2 mile
south of Stehr Bros. Mill. Watch for
auction signs along Klingerstown to
Rough & Ready Road.

REAL ESTATE

FARM - 34 ACRES, more or less, situate in
the Township of Upper Mahanoy, County of
Northumberland and Commonwealth of
Pennsylvania, having thereon constructed a
2 1/2-STORY FRAME DWELLING...First floor
consists of KITCHEN, DOUBLE LIVING
ROOM & CLOSED-IN PORCH...Second floor
has 3 BEDROOMS & BATH... 32'x72' 1-STORY
METAL BUILDING (formerly used as a dairy
barn equipped w/cow stalls). For additional
information or inspection phone 717-758-6004.
Real Estate will be offered at 6:00 P.M. (Note:
The Lancaster Silo, Mueller Stainless Steel
Tank and Universal Milking System will be
offered individually and with the farm.)

MACHINERY & MISC. ITEMS

Lancaster 16'x55' Silo; Mueller 1,000 Gal.
Stainless Steel Tank w/Ref. Control & Cleaning
System; Universal Model 1000 Milking
System; Int. 856 Diesel Tractor w/Full Cab;
Winco 15KW Generator; Int. Feed Grinder,
Model 105GM; Int. 4-B 16" Semi-Mount Plow,
Model 540; Int. Disc; New Idea Manure
Spreader; 5' Rotary Mower; Int. Pull-Type
Combine; Int. 2-Row Cultivator; A.C. 2-Row
Corn Planter; 8-Row Sprayer; New Idea 7' Hay
Mower; Brock Feed Bin; 15' Aluminum Truck
Box; Suzuki Motor Bike; Ski Whiz-Massey
Ferguson Snowmobile; 15' ScotchCraft Wooden
Boat w/Trailer & Johnson 80 Motor;
Blacksmith Forge; Sausage Stuffer; Kitchen
Coal Stove; Square Oak Table; Etc.

TERMS: REAL ESTATE - 10% DOWN.
FURTHER TERMS AND CONDITIONS TO
BE GIVEN DAY OF SALE. PERSONAL
PROPERTY - CASH. PERSONAL CHECKS
ACCEPTED ONLY FROM PERSONS
HAVING AN ESTABLISHED ACCOUNT
W/AUCTIONEER OR APPROVAL PRIOR TO
DAY OF SALE.

**UPPER DAUPHIN
NATIONAL BANK**
Owner

Allen Shaffer, Attorney
Auctioneers: Dockey #AU229L,
Dockey #AU1683L & Deppen #AU1957L

PUBLIC AUCTION

**OF 57 ACRE
TRACT OF LAND**
SATURDAY, NOVEMBER 15, 1986
@ 11:00 A.M.

Located approximately 8 miles east of
Chambersburg. From Chambersburg
take Rt. 30 East to 997 South to Duffield
Rd. Turn right approx. 1/2 miles to
property. Watch for signs. Guilford
Township, Franklin Co., Pa.

Real estate consists of 57.5 acres of open land
with level to gently sloping terrain. Utilities
include electric, public sewer, and gas. Ex-
cellent corn land. Soil types are Duffield silt
loam and Murrill gravelly sandy loam. Good
development potential or farm expansion.
Beautiful scenic setting in view of South
Mountain.

Property more fully described in Deed Book
Vol. 390, page 283 and Vol. 611, page 409,
Franklin County Records.

TERMS: 10% down day of sale; settlement
by January 15, 1987.

INSPECTION: By appointment - Call Nelson
Lehman at 717-291-5559

Terms by:

ESTATE OF ANNA LOIS LEHMAN

Executors: Wilmer R. and
Nelson H. Lehman

Attorney: Martha B. Walker

HORNING FARM AGENCY, INC.

Alvin Horning, Auctioneer

#AU-000433-L

Main Street, Morgantown, Pa. 19543

Public

Auction

Register

TUES OCT 21 - 11AM
Complete Purebred Herd
Dispersal located 5 mis S
of New Holland, 4 mis E
of Intercourse, New
Holland, RD 2 Terms by
J S Diener & Sons Paul
Snyder, Auct

TUES OCT 21 - 11AM 52
Milking Grade Holsteins
on the farm located bet
Union Bridge & New
Windsor in Carroll Co.,
MD. Truman "Sonny"
Thompson, Jr owner
Remsburg Sale Service,
Sale Manager

TUES OCT 21 - 11AM
Cattle, Machinery, Barn
Equip., Milk House Equip
Produce. Located 1 1/2 mi
south of Wellsboro, PA at
end of Pearl St on Dean
Hill. Owners: Ralph &
Hazel Carr Robert M
Shaylor Sales.

TUES. OCT 21 - 12 Noon
80 Head Holsteier
Dispersal Lanc Co, PA, 3
mis E of the village of
Intercourse, 1 mi W of
White Horse Along Rt
340 just W of Rt 897
Hershey & Marguerite
Kurtz, Owners Steve
Petersheim & Steve Jr.
Aucts

PUBLIC AUCTION

SATURDAY, OCTOBER 25, 1986
9:00 A.M.

Location: Between Elizabethville, Pennsylvania & Loyalton,
Along Route 209, in Dauphin County.

FARM MACHINERY & RELATED ITEMS

Farmall 504 Tractor (1200 hrs.); Ford Ferguson 9N Tractor; McCormick
125 SPV Combine; Int. 3-Pt. Hitch 3-Bottom Plow; Int. 3-Pt. Hitch Sickle
Bar; Ford 3-Pt. Hitch 2-Bottom Plow; New Idea No. 17 Manure Spreader;
Wood Bros. Rotary Mower; Farguhar Tree Sprayer; Disk; Int. Corn
Planter; New Idea Single Row Corn Picker; McCormick Int. 10 Drill w/16-
7" Double Disk; David Bradley Rubber Tire Side Delivery Hay Rake; 4-
Section Spring Tooth Harrow; 3-Pt. Hitch Scraper Blade; McCurdy Bin
Wagon; Cement Mixer; Case 27' Elevator; 4" Grain Auger; 12' L; Horse
Drawn Plow, Potato Plow & Plank Sled; Mandrel Buck Saw; Lincoln 225
AMP Electric Welder; Blower for Blacksmith Forge; Rough Lumber;
Assortment of Wooden Barrels & Apple Boxes; Wooden Cider Press,
Electrified; Cream Separator; Assorted Wooden Beehives & Supplies;
Misc. Hand & Garden Tools; (2) Machinist's Wooden Tool Cabinets;
Assortment of Plumber's Catalogs & Reference Books; Numerous Other
Items.

**1968 FORD 350 TRUCK w/DUMP BOX
NEW MOON 10'x55' MOBILE HOME w/2
BEDROOMS, BATH & COMBINED LIVING
ROOM-KITCHEN (MUST BE MOVED)**

ANTIQUES & COLLECTIBLES

Solid End Jelly Cupboard; Splay Leg Stand; Small Tramp Art Chest;
Round-Top Trunk; Wicker Stand; 6-Drawer Counter Top Cabinet
w/Original Old Red Paint; Oak Case Treadle Sewing Machine; Wooden
Hanging Pie Cupboard; G.E. Circa 1900 Refrigerator w/Compressor on
Top; Penn Kitchen Coal Stove w/Warming Closet Top; Rose Bud Iron Pot
Belly Stove; (2) Iron Butcher Kettles; Copper Washboiler; Enterprise No.
35 Sausage Stuffer; Copper Apple Butter Kettle; Meat Bench; Butcher's
Fork & Pr. of Ladles; Beam Balance Scales; Wooden Butter Churn; (2)
Plank Bottom Rockers; (2) Pressed Back Chairs; Assorted Jugs & Crocks;
Rayo Lamp, Electrified; 36" H. Adv. Dog Marked Nipper (formerly used
as RCA dog); Sm. RCA Adv. Dog; Assorted Depression Glass; Granite
Coffee Pot; 4-Pc. Toilet Set; Book - "Pennsylvania at Chickamauga &
Chattanooga"; Numerous Other Items.

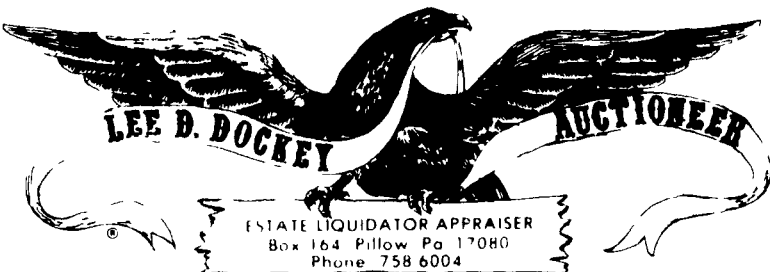
HOUSEHOLD ITEMS

Whirlpool 21.5 No Frost Upright Freezer; (2) Upholstered Platform
Rockers; Sofa Bed; Recliner; G.E. Dehydrator; 5-Pc. Wooden Breakfast
Set; Enterprise Meat Grinder; Canning Jars; Dishes, Pots & Pans;
Stevens 12 Ga. Shotgun; .22 Rifle; Remington Single Shot .22 Rifle Patent
Date 1902; Etc.

TERMS: CASH. Personal Checks Accepted Only From Persons Having
An Established Account w/Auctioneer or Approval Prior To Day Of Sale.
Note: Auction Will Begin w/Farm Machinery & Related Items.

GRANT C. TRESSLER
Owner

AUCTIONEERS: DOCKEY #AU229L,
DOCKEY #AU1683L & DEPPEN #AU1957L



ESTATE LIQUIDATOR APPRAISER
Box 164 Pillow, Pa 17080
Phone 758 6004

PUBLIC AUCTION

SATURDAY, OCTOBER 18
10:00 A.M.

Located 5 miles south of Lewistown,
Pa. at Grandville. Sale sign at Jct. of 333
and 103.

Complete Dispersal of 250 state in-
spected bee colonies and equipment.
Pollinated for 200 hives.

BEE EQUIPMENT

2 Hubbard Extractors, 24/44 and 44/60, Model
2401 and 4401; Cowan Silver Queen Uncapper;
500 lb. Stainless Steel Bottling Tank with
Heater; Kelly Jumbo Capping Melter; Wax
Press; Steam Boiler; Honey Barrels; Honey
Pump; 600 gal. Stainless Steel Tank; 75 New, 10
Frame Hive Bodies; 150 New, 8 Frame Hive
Bodies; 300 Supers Drawn Comb; 2 Bee Nets;
Hive Tools, Smokers, Veils, etc.; Air Tools and
Staples; Barrel Cart; Nose Truck; Many Other
Tools and Equipment.

**TRUCKS, TRAILERS AND
SKID LOADER**

1979 Chevrolet C 60 Flatbed Truck, 21,000
G.V.W., 350 Engine, Good Condition; Bob Cat,
Model 600 Skid Loader with Forklift, Bucket
and 5th Wheel, Good Condition; 1975 Penyan 24
ft. Fiberglass Inboard Boat; 22 ft. Boat
Trailer; Two 12 ft., 2 Axle Trailers for Cars or
Machinery; 20 ft. Aluminum Truck Box, Good
Condition; 2 and 4 Cylinder Wisconsin Engines
(one on cart); 20 ft. 3 Axle Trailer; 3 Mobile
Home Axles and Tires; 1973 Chevrolet Flatbed
Truck, 427 Engine for Parts; 5 - 4 1/2 ft. Section
Scaffolding; Mortar Mixer; Platform Scales;
Kalamazoo Kitchen Range and Other
Household Items.

For more information contact owners: phone
717-242-0633 after 5 p.m.

TERMS: Cash or Cashiers Check Only
Lunch

Order of Sale: Tools and Miscellaneous 10:00
A.M. followed by Bee Equipment; Trucks,
Trailers, and Skid Loader 1:00 P.M.; Bees
approx. 2:30 P.M.

KOHLERS APIARIES

R.D. 1, Box 102 - Grandville, PA 17029
717-242-0633

LONG'S AUCTION SERVICE
#AU-000557-L - Phone 717-527-4458
ROBERTSON & STRONG, Clerks