

New Quality Standards

Set For Soybeans

ST. LOUIS, Mo. — Grievances leveled by importing nations against the quality of U.S. soybeans should ease as the result of new quality standards established by the Federal Grain Inspection Service.

"With the new standards, an importing nation can buy U.S. No. 2 yellow soybeans and be assured they'll be acceptable," says John Pitchford, grain marketing specialist with the FGIS international marketing staff. "We know importers are pleased with us making this change because now they have insurance that the United States will conform to their needs," he says.

With regard to the Europeans who have been the most adamant about the quality of U.S. soybeans, chairman of the soybean committee for FEDIOL, a group of European crushers, Fred Derost says, "Through this measure one of the causes of deteriorating

quality of soybeans during transport from the United States to Europe is taken away to a great extent."

Complaints by importers of U.S. soybeans have tripled in the last two years and even became dire enough at one point that poor quality forced the cancellation of U.S. imports. Farmers were blamed for the quality problems, and quality has become a thorn in the side of U.S. producers during the past two years.

"The surge in importer complaints caught FGIS off guard," says Continental Grain's Max Spencer. "What's happened these past two years with regard to quality may not happen again for five years, but with these new standards next time at least FGIS will be prepared."

"The new standards should satisfy all importers and absolutely calm them down with regard to quality," Spencer says.

Berks Co. Farm-City Tour

Each year a Conservation Tour is held by the Berks County Conservation District. Other agencies who are co-sponsors this year are the Berks County Agricultural Stabilization and Conservation Service, Soil Conservation Service, and the Bureau of Forestry.

This year the Bieber Bus will leave the Agricultural Center parking lot at 9 a.m. on Thursday, October 16th.

1986 is "The Year of the Forest" in Pennsylvania so the tour will highlight activities that tie in with that theme. The first stop will be in Reading at the Georgia Pacific Paper Plant on Riverfront drive for a short tour of the facility. The second stop will be at the largest white oak tree in Pennsylvania which is on the grounds of the Wernersville State Hospital. A stop will be made at the Keeney-Ziegler Honey Storage Facility just East of Bethel and then a lunch stop at Kauffman's Bar-B-Q Chicken Ranch. After lunch a short tour of the new sawmill run by J. O. Younger Son's Incorporated and

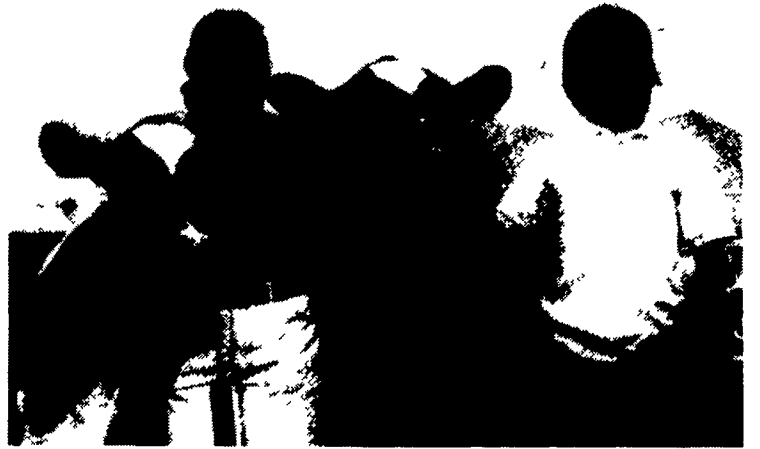
then a tour of the Harris Pine Mills furniture plant at Hamburg. It is expected to be 4 p.m. when the tour ends back at the Ag Center parking lot.

As always, conservation prac-

tices that can be observed, will be pointed out along the way by personnel who sponsor and conduct the tour.

For more information on how to obtain a ticket please call the ASCS office at 372-4655.

Correction



You'll notice that Dee Martin (left) is smiling. That's because we incorrectly identified her as Marilyn Brommer in last week's Lampeter Fair dairy show coverage on page A28. Dee is holding the grand champion Ayrshire and Max Brommer is still standing by with the reserve Ayrshire.

WED. OCT. 8 - New Holland Sales Stables, Inc., Special Dairy Sale Consignments. Located 12 mis. E. of Lancaster, PA. Just off Rt. 23, New Holland.

FRI. OCT. 10 - 11AM 98 Holsteins, Machinery, Richard & Avis Warner Complete Dispersal. Located Mel Manasse Farm on Rt. 79, 4 mis. S. of Whitney Point. Use Exit

8 off I-81 to Whitney Point. Mel Manasse, Aucts.

FRI. OCT. 10 - 1PM 28 Holstein Cattle, Dairy Eq. Located 2 1/2 mis. NE of Unityville, PA. 5 mis. SW of Benton, near Talmer. Elwin & Helen Mulaney, Owners. Fraley Auct. Co.

FRI. OCT. 10 - 1PM Farm Mach. Located Farmers Home Administration, Bull Run Crossing, RD2, Lewisburg, PA. Union Co. Wayne Hess, Auct.

SAT. OCT. 11 - 11AM 33 Holstein Dairy Cows. At Jim Adriance Farm, turn off Rt. 706, just E. of Montrose, PA. Susquehanna Co. Jim Adriance, Auct.

SAT. OCT. 11 - 11AM Farm Mach., 3 Tractors, Hay, HH. Near Shickshinny Lake, 2 mis. N. of Huntington Mills, 5 mis. S. of Muhlenburg. Andrew Rombilus, Owner. Fraley Auct. Co.

When buying cheese for a party, don't buy too far in advance or too much. Plan on serving two to four ounces of cheese per person.



PUBLIC REAL ESTATE AUCTION

J. OMAR LANDIS AUCTION SERVICE WILL CONDUCT "THE LANCASTER COUNTY REAL ESTATE HAPPENING OF THE EIGHTIES" SELLING FOR PENNSYLVANIA POWER & LIGHT COMPANY

ON SATURDAY, OCTOBER 25, 1986

Auction Beginning At Precisely 9:30 A.M. Located Along Route 441 (River Road) And Anchor Road. Just South Of Washington Boro, Pa. (Manor Township)

9 FARM TRACTS AND 5 ADDITIONAL HOMES

Tract #1	44.918 Acres With House & Farm Buildings.
Tract #2	70.454 Acres With Tobacco Shed.
Tract #3	110.477 Acres With (2) Sets Of Farm Buildings
Tract #4	75.258 Acres With House & Farm Buildings
Tract #5	104.592 Acres With House & Farm Buildings
Tract #6	54.700 Acres With Farm Buildings
Tract #7	93.678 Acres With House & Farm Buildings
Tract #8	69.095 Acres
Tract #9	12.688 Acres With House & Farm Buildings

AFTERNOON SESSION

Tract #10	.384 Acre With Brick Rancher
Tract #11	.46 Acre w/Brick Rancher
Tract #12	.399 Acre w/Brick Rancher
Tract #13	.50 Acre Former School House
Tract #14	1.208 Acre w/2 Story Brick House w/Barn

Buyers Must Obtain Financing

Terms On Farms 10% Down Day Of Auction Balance By April 1, 1987

Terms On House 10% Down Day Of Auction Balance By December 31, 1986

On Site Auction Office Oct. 9, 10, 11, 16, 17, 18, 22, 23, 24 9 a.m.-4 p.m.

Inspection of Houses / October 11, 18 / 2-4 p.m.

Blakingler, Byler, Grove, Thomas, Chillas James H. Thomas Attorneys 717-299-1100

For Brochure Information Contact Auction Firm

Auction Conducted By The J. Omar Landis Auction Service Jay M. Witman AU001127-L Box 501, Apple & Robert Sts. Ephrata, Pa. 17522 (717) 627-0789

PUBLIC SALE

OF JOHN MYLLY'S GUN SHOP INCLUDING Power Shop Tools Hand & Garden Tools Guns - Pistols Gun Parts Gun Books & Magazines Ammunition

WED., OCT. 15, 1986 At 10:00 A.M.

Loc. 2516 Willow Street Pike, Willow Street, West Lampeter Twp., Lancaster Co., PA (Just south of Willow Valley Restaurant)

Sale by MRS. JOHN W. MYLLY ESTATE (Julia P. Mylly)

Blakingler, Grove & Chillas, Attorneys Howard Shaub 464-3541 Auctioneer (AU-000831-L)

PUBLIC AUCTION

FRI., OCTOBER 17, 1986 2 P.M.

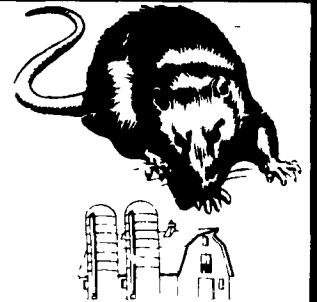
Located Ward Fetzer residence, Rebersburg, PA, road between Rebersburg and Smullton. Behind school house.

MACHINERY

JD 60 gas, power steering, 3 pt. hook up; Oliver 2R corn planter, 3PTH; Oliver 2B 14" plow, trailer type, hydraulic lift; Oliver 3B 14" trailer plow w/hyd. lift; 2R tractor cultivator; 3 chicken crates; 3 hydraulic cylinders; cement mixer; cutoff saw; gravity box and wagon; flat bottom wagon w/high sides; wagon running gear; 2 wheel trailer from PU bed; dump trailer; lime sower; 1 gal. driven manure spreader; 62T baler w/thrower; JD 4 bar hay rake; (2) 8' disks; steel roller; 12' harrow; JD 11 hoe disk grain drill on steel; Oliver 1R corn picker; old AC combine; home made camping trailer, sleeps 4; dry oak lumber, mostly 18' long; crib of dry corn; 1500 bu. round corn crib; 26' bale elevator; King Wise w/Briggs & Stratton gas motor; 1 acre lot w/barn in Rebersburg.

Leon J. Smith, Jr. & Son Auctioneers AU000868-L Owner & auctioneer not responsible for accidents. Millheim, PA 16854

ATTENTION FARMERS... FREE ESTIMATES ON RODENT CONTROL



RODENTS carry diseases which can endanger the health of your poultry flocks. Your business is raising them. Ours is protecting them.

We Specialize In Sanitizing And Disinfecting Poultry Houses

Ehrlich

Since 1928

Pest control is too important to trust to anyone else

Lancaster, PA 397-3721
Lewistown, PA 248-0983
State College, PA 237-7607

WESTFALIA SYSTEMS

NuPulse

Fisher & Thompson Sales Center offers a full line of Westfalla and NuPulse milking equipment for Lancaster and surrounding areas.

From the simplest to the most advanced milking techniques in the industry today. Let Fisher & Thompson meet your milking equipment requirements.

Call Us Today And Let Our Experience Work For You

FISHER & THOMPSON, INC.

Milk Equipment Sales & Service 127 Newport Rd. Leola, PA (717) 656-3307 24 HR. SERVICE Amos Fisher Rick Thompson 717-687-8871 717-627-1162