

**MAILBOX MARKET FOR SALE**

Ni 323 corn picker, very good cond., \$1,600. Lanc. Co. 215-445-6345.

IH T340 crawler loader, independent PTO, 200 hrs. on overhaul, engine undercarriage needs work, \$1,500; NI crimper, \$275. Lanc. Co. 215-445-7101.

Minneapolis 27-44 cross moter. 717-354-9939.

Seven yr. old standardbred carriage horse, traffic safe. Aaron I. Martin, R4, Box 482, Ephrata, PA 17522.

JD-M tractor, plows cultivators, mower harrows, new battery, front tires, 1 new rear tire, \$1,800. Sullivan Co. 717-928-8501.

Hardwood slabwood, inexpensive heat for shop/home, 6 bundles, \$190 or 6 bundles cut and split, \$275, delivered. Huntingdon Co. 814-447-3746.

1977 Midas 23 1/2 mini-motor home, exc. cond. Sleeps 6. Front and roof air, awning, 35,000 miles, \$11,000. Lanc. Co. 717-284-3105.

Mobile home rabbitry, complete operating. Now rabbits, market included, 4x4 Scout, make offer, 4 ewe spring lambs, Suffolk Dorset. Lanc. Co. 717-665-5210.

200 gal. Griton milk tank, \$300; SP11 vacuum pump, \$75; 3 HP compressor, belt driven, \$75. Wanted: straw chopper. Union Co. 717-523-7331.

AC 303 baler, top cond.; 18' livestock trailer, tandem axle, \$600 each or best offer. 717-653-4286.

Two purebred Yorkshire boars from Renn Thomas' stock. Approx. 100 lbs. each. FFA project. Dauphin Co. 717-367-3283.

NI 214 PTO manure spreader, Gratz web endgate, \$1,575; NI 325 2 row narrow picker, 12 roll bed, \$5,900. 717-354-0266.

Woods 1 row picker, \$100; Case baler, \$100; Allis 3 pt., bottom 14" plow, \$250. Dauphin Co. 717-566-7013 after 5 PM.

McCormick corn picker, running cond.; McCormick corn picker for repair. Jacob L. Miller, Mill Creek School Rd., Bird-in-Hand, PA 17505.

Jersey family cow, fresh 5 weeks, \$350; Ben Franklin fireplace stove, \$75. Lanc. Co. 717-354-5039.

Firewood from processor, cut, split, dry, wholesale. Dealers wanted, 10 corn trailer, about 30 corn per day. Franklin Co. 717-532-5331.

NH 2 RW corn head for 880 or 890 chopper, good cond., \$250. Chester Co. 215-269-3442.

Maytag alum. tub wringer washer, elec. good cond.; Antique hand carved wooden bed. 717-569-3879. Clarence H. Hostetter, P.O. Box 5093, Lancaster, PA 17601.

AKC black and silver german shephard male, 8 weeks old, \$35. John King, Monterey West Eby Rd. First lane left. Bird-in-Hand, PA.

Rabbit cages, like new. Selling because of health. 301-557-8531.

Rye seed, 600 bu., \$3.00/bu. Field run, \$4.00 cleaned. Lanc. Co. Deliver pickup loads, extra. 717-665-4308.

674 diesel w/or without 2250 loader tractor. Has new paint, clutch needs other work, tractor, \$3,700; loader, 2,000. 814-667-2297.

FAMILY COW: Reg. Guernsey. Small, easy keeper, gentle. In milk, bred back. \$600. Bucks Co. 717-795-2600 or 766-0890.

40 bu. Tyler seed wheat, cleaned, near certified, \$3.75/bu.; IH manure spreader, 175 bu., good condition, \$600. Lanc. Co. 717-859-2374.

Golden Comet laying pullets, 20 wks old, good body size, \$3.50 Lanc. Co. 717-354-0246

Two metal single beds, \$50 each; baby carriage, \$25; metal wardrobe, \$15. Lanc. Co. 717-626-6592.

Frick 45 steam boiler, new flues, 120" hose, reel, stainless pans on wheels. John U. Stoltzfus, R2, Honey Brook, PA 19344.

Oliver 1250 tractor, 3 ph, PS, good cond., \$2,500; 6' Mott flail mower, \$750; 2 bottom moldboard plow, \$250. Chester Co. 215-255-4719.

Penscott clover seed, \$55/bu. Montour Co. 717-275-2529.

21' truck body, seasoned white oak lumber, parts washer, 4" auger, 332 Ford truck motor. Northumberland Co. 717-758-3108.

Two cylinder slow speed automann diesel, \$700. Wanted: 12 cats. John L. Hostetter, 19461 Sweet Water Rd., Dry Run, PA 17220.

'59 Ford 16' flatbed truck w/14' sides. Bed like new. New paint. No rust. Exc. cond., \$1,995 neg. Lebanon Co. 717-865-2202.

8.5 Kawasaki engine, E-start, like new, \$475; Atlanta homesteader C or W stove, \$300. Samuel F. Stoltzfus, R1, Box 22, Kinzers, PA 17535.

Farfall 350 dal., engine completely overhauled, \$2,500; 6 front end weights for IH, \$30 ea. Cumb. Co. 717-532-9373.

1986 Honda Big Red ATC 250 3 wheeler, approx. 8 hr. use. \$1,800. Dauphin Co. 717-896-8314.

Gas Engines: 5HP NH \$1,250; 1 1/2 HP NH \$2,100; 2HP National \$1,900. 717-656-9570.

Fox silage blower, very good condition, kept inside, w/1 section 9" pipe. Must see. Only \$350. Carroll Co. 301-756-6030.

AC D17 tractor w/mtd. 2R husker, 4R cultivator, 4B plow, 7' sickle bar mower. Lehigh Co. 215-756-6103.

Yorkshire boars, sound, aggressive. York Co. 717-993-2450 eves.

Hog scaldier, all metal w/lift out rack, 85 gal. float type hog waterer, 9 leg chisel plow. Carroll Co. 301-756-6290.

Tyler seed wheat near certified, cleaned, 40 bu., \$4; IH 3 beater manure spreader, 175 bu., good condition, \$600. Lanc. Co. 717-859-2374.

Year old round straw bales. You haul. 301-775-2378.

Two wheel trailer w/PU bed and canopy. \$100. Lititz. 717-626-2330.

Barsoy seed barley, cleaned, treated, \$3.25/bu. Also field corn. 717-626-7665

Wilmington pump 760 Gamemaster, 300 Savage, 3x9 scope, sling, extra clip, shell. Lanc. Co. 717-665-3845

1977 Ford 1/2 ton pickup, Ranger XLT, 302, AT, AC, new paint. Best Offer. Lanc. Co. 717-665-6082

Cob Sieve for JD 6620 Combine. Keep cobs in for high moisture corn. Lebanon Co., 717-273-7394.

Farfall H with mounted picker, \$1200. Floor supports for 10,000 bus. grain bin. Carroll Co., MD. 301-775-2954.

Chicken manure, \$5/ton, you haul. Call after 5 p.m., 717-367-3122.

6'x10' Tilt bed trailer, 15" wheels, plank floor, 3000 lb. GVW, 6'x16' tandem axle trailer, 7000 lb. GVW, plank floor. 717-273-7394 evenings.

Purebred Yorkshire boars, bred gilts and open gilts, carcass championship bloodlines. Willow Glenn Farms, RD2, Strasburg, Pa. 717-787-2562.

Specializing in pleasure Tennessee walkers. Always a good selection of trail & show horses. Yearlings, broodmares. Stud Service. Lester Weber Stables. 215-267-7311.

Top Quality Hay, Straw, Oats, Steer hay 140 per ton and up, mulch hay. Call before 7 AM or after 7 PM. 201-735-8389 or 201-735-8865.

All size silo roofs at reduced cost. Lanc. Co., 717-687-6672 or 768-3095.

1925 Model T Ford, made into PU, cute. Motor, frame, body, tires, good. Good advert. piece. Must sell. Montg. Co. 215-933-2469

Used Bee Equipment. Inverbrook Apiaries, RD2, Box 230, West Grove, Pa. 19390. 215-869-3353.

MINI LOP RABBITS with papers, \$25. Very loveable pets. NZW Rabbits with papers, \$10. Cecil Co., Md., 301-885-2134.

Outside calf hutches, \$75 each. David B. Stoltzfus, RD2, Box 282B, Nottingham, PA. Take Brown Rd. at Little Britian, second road right.

Rock Oak, 1" to 1 1/4". Also, Cherry and Poplar. After 5 p.m., 717-776-3239.

12 yr. QH, Bay trail horse. 12 yr. 1/2 Arab, sharp, endurance, competitive trail horse. Have shots, new shoes. 717-432-8282.

TD-5 international crawler, 4 cr. dsl. w/PTO, tongue converter, excellent cond. \$2,800. 717-672-2021.

U.S. mint plate blocks; 1968 Mustang, 62,000 mis.; 1978 dsl. Olds, 65,000 mis.; new ping pong table. Perry. 717-582-4898.

Reg. Dorsets, fall and spring lambs, \$75 and up. Lehigh. 215-395-2910.

Wire corn crib, fair condition. Asking \$200. Hunt. Co. 814-259-3377.

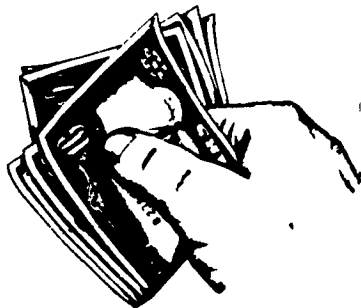
4000 shower yearling laying 76 per cent. Must be moved soon. L.S. Stoltzfus, 305 E. Eby Rd., Leola, PA 17540.

NI 702 Uni picker, 727 husker, 735 head, 3RN, good condition; JD 71 PTO corn sheller, good. Lanc. Co. 717-464-2408.

Purebred Reg. black Angus breeding stock cows, calves, pairs, good bloodlines. Leb. Co. 717-865-5719.

Sex-Sal brown egg pullets ready to lay October 10th. Northumberland Co. 717-425-2772.

**We're Buying Quality!**



Farmer's Cheese Co-Op Now Offers Premiums For Extra Quality Milk. We Want The Best Quality Milk Because Quite Simply, The Best Quality Milk Makes The Best Quality Cheese.

With the use of analytical and computer technology, we will pay you (based on the cheese and cream market) what a hundred pounds of your milk will yield in cheese and cream. Farmer's Cheese Co-Op will be paying its farmers on a bi-monthly basis, plus offering a group hospital insurance.

*Quality Milk Costs More But We Think It's Worth It.*

If you want more for your milk - CALL (412) 946-8729 Ask For Ron or Jack

**Farmer's Cheese Co-Op Ass'n.**

P.O. Box 198, New Wilmington, PA 16142 (412) 946-8729

**DIXIE CHOPPER**

*The fastest moving mower in America*

COMMERCIAL QUALITY MACHINES



Call For Free Demo

- Oil Cooler, For Increased Engine Life
- 18 H.P., 50" Deck
- 24 H.P., 60" Deck

If you're tired of mowers that spend more time in the repair shop than they do cutting grass, it's time you checked out Dixie Chopper.

Dixie Chopper makes a full line of residential and commercial mowers you can depend on - our written warranty makes sure of it! Plus, every Dixie Chopper offers these important benefits:

- Mows more than 2 acres an hour, at speeds up to 6.5 mph.
- Trims as it mows. True zero turning radius lets a Dixie Chopper trim and mow around trees, shrubs and corners in one pass.
- Eliminates scalping. Even on uneven ground
- Easy to operate. Two simple steering controls operate mower. Electric starter for easy on/off
- More comfort. Plush, high-back seat with arm rests for a more comfortable ride.
- More power. Thanks to a custom-built, cooler running 18 hp Briggs & Stratton or 24 hp Onan engine.
- Best yet, Dixie Choppers are priced very affordably. Call your Dixie Chopper dealer, at the number below, for a free test ride today!

**WES STAUFFER ENGINES & EQUIP.**

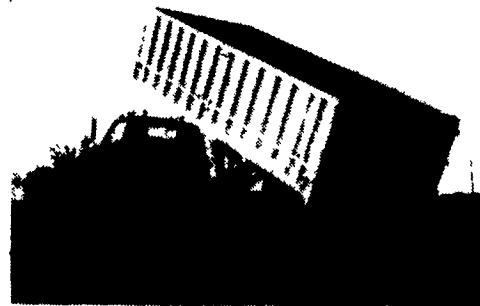
RD 3, Ephrata, PA 17522 (717)738-4215

Ephrata Exit New Rt. 222, 1/2 Mile West On Rt. 322, Turn left onto Pleasant Valley Rd.

**HEWEY WELDING**

Box 2312, Rd 4, Lebanon, PA 17042 717-867-5222

**ALUMINUM GRAIN BODIES & ALUMINUM REPAIRS**



These ultra-light bodies are designed for strength through engineering, not strength with bulk. For example a 16' grain body with tailgate and 48" sides weighs only 1490 lbs. complete. We'll build you any length or any side height up to 60"

Also available

- ★ Double swinging hay hauling tailgate
- ★ Barn door type tailgate
- ★ Slide out cattle chutes
- ★ Diamond Flooring
- ★ Pull out panel tailgates
- ★ Any size grain chute

**COW MATS**

Use our unique method of installing a one piece mat under a row of cows. Prevents movement of mat and bedding from creeping underneath. All "row" and single mats are cut from heavy one inch rubber belting.

**SAVE COWS, TIME & BEDDING**

SAVE 40% on

- New Replacement Belts For Farm Machines
- Bale Thrower Belts \$70.00
- Grove-Gehl-Int.-S.U. Wagon Box Belts \$120 to \$150

Also Available. Bean Picker Belts & Big Round Baler Belts

Any flat belt can be custom made for your farm machinery (cleats installed). Belts shipped same day by UPS.

For more information, write:

**Bob Gabel**

Rt. 16, Chaffee, New York 14030

CALL TOLL FREE: 1-800-537-3003 Phone Collect: 716-496-6025

