

Bradford Co. DHIA

(Continued from Page D19)

Kenneth Howard					
Ginger	3	6	305	21,175	869
Champdale Farm					
Y 88	3	0	289	19,171	869
Calvin & Rick Shaffer					
69	3	4	305	21,806	942
Stephen & Marcia Gary					
B Grace	3	5	305	23,584	1181



Tioga County DHIA Monthly Report

August, 1986

A cow owned by Russell Brown topped the August DHIA list for Tioga County with 23,586 pounds of milk and 1,032 pounds of fat. The following herds averaged over 650 pounds of fat during the August test period.

Name	Brd.	No. Cows	% Days In Milk	Milk Lbs.	Fat Lbs.
Harold Robson Jr	3	56.8	88.5	20,833	778
William Chamberlain	3	46.5	87.7	20,958	768
L & J Holsteins	3	41.5	88.3	20,548	758
Leemon E Gaugler	3	42.6	88.1	19,656	758
Theodore Schmelzle	3	49.1	89.8	20,315	736
Middle Ridge Farm	B3	108.3	89.0	16,970	*735
Dean Baity	3	56.5	87.6	18,468	720
Paul & Emma Machmer	B3	22.5	84.8	18,664	718
Glenn Bowen	3	38.1	86.3	19,748	711
Emery-Rick Davis	B3	54.1	86.0	18,592	706
War-Bern Farm	3	95.9	87.9	18,974	700
Oliver + Marian Butler	3	57.7	86.0	19,920	696
Charles D Groover	3	16.1	86.0	18,330	686
Charles & Doris Porter	3	53.1	86.8	20,093	686
Clark Bowen & Son	3	52.2	86.6	18,819	681
Dale E Allen	B3	78.6	91.1	18,693	681
John S Bennett	3	59.4	87.8	18,796	680
Richard Groover	3	41.6	86.9	18,994	678
Chris Gaugler	3	43.4	88.6	17,956	678
Doug + Jenny Lawton	3	62.7	88.3	19,470	677
Gordon M Wood #1	3	145.2	83.2	20,117	676
David Cleveland	B3	47.6	83.9	19,917	674
Shedd Ranch-PA	B3	60.3	90.0	17,794	674
Jay Foreman	3	78.2	88.1	18,217	662
Robert L Miller	B3	80.1	88.0	18,345	657
Verne W Bowen	3	41.7	88.3	18,529	657
Gerald Parker	3	73.2	88.7	19,787	654
Norman & Gary Jackson	3	39.5	85.2	17,643	651
Allan J Lilley	B3	43.5	88.9	18,969	651

*-3 times a day milking

Cows that produced 850 pounds of fat or more in 305 days in August 1986

Russell Bowen					
Lavern	6-0	305	23,586	4.4	1032

Richard Groover					
Debbie	6-1	305	27,046	3.7	1008
War-Bern Farm					
Jemini	5-2	305	21,524	4.6	988
Dean Baity					
Rosebud	6-1	305	20,842	4.7	985
Glory	9-9	305	20,904	4.5	935
Middle Ridge Farm					
285	1-11	305	17,162	5.6	967
294	6-9	305	17,859	4.9	871
Harold Robson Jr					
Bea	6-3	305	24,695	3.9	961
Babe	3-0	305	26,141	3.6	950
Charles D Groover					
Jane	5-11	302	20,241	4.7	950
Louise	7-10	305	23,252	3.7	858
Gordon M Wood #1					
Mandy	6-0	305	26,781	3.5	944
Mel	7-7	305	24,928	3.5	865
Baker Family Farm					
266	7-0	305	17,289	5.3	915
L & J Holsteins					
Sprinkl	5-7	305	28,861	3.1	902
Norman & Gary Jackson					
Thelma	5-10	305	23,806	3.8	901
Patty	8-11	305	20,909	4.1	864
Galen & Dale Jackson					
Jumpy	4-7	305	20,234	4.4	894
Simalot Holsteins					
Rhoda	6-11	305	23,853	3.7	891
Cecil R Moyer					
Jolene	4-11	305	20,928	4.2	881
Theodore Schmelzle					
Boots	3-10	305	21,635	4.0	875
Charles & Doris Porter					
Cathy	6-7	305	24,893	3.5	870
Sexie	3-9	305	23,987	3.6	859
RA & Kathleen England					
Terr	3-10	305	23,914	3.6	863
Mark & Lori Sherman					
190	7-10	305	21,677	3.9	855

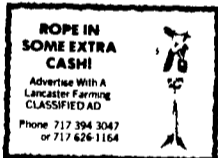


Juniata County DHIA Monthly Report

August, 1986

Records were calculated for 4,002 cows in 77 herds. The ten highest Rolling Herd Averages for the most recent 12 months of production are

Name	Brd.	& Days In Milk	Milk Lbs.	Fat Lbs.
Rick & Ralph Saner	3	85.9	22,726	832
Barry E Lucas	3	84.9	21,529	777
Mark L Zook	3	88.2	19,669	729



Lancaster Farming Saturday, October 4, 1986-D21

Harold B Shearer	3	89.7	20,498	709
Daryl & Del Brubaker	3	87.2	19,597	700
SF Metz	3	86.5	19,152	696
Steve & Barbara Wilson	3	83.2	19,637	689
Donald C Everitt	3	84.9	18,227	687
Charles C Wochley	3	86.5	18,217	683
Donald Adams	3	84.3	18,739	683

Four hundred thirteen cows completed records of 305 days or less. Four of these cows produced over 900 pounds of fat, 15 produced over 800 pounds, 52 produced over 700 pounds; 90 produced over 600 pounds, and 110 produced over 500 pounds.

Dairy cows which completed lactations with an average butterfat of 850 pounds or more are listed below.

Name	Milk Lbs.	Fat Lbs.
Barry E Lucas		
112	23,166	962
106	24,637	903
Grand Hope Farm		
210	19,480	912
184	21,397	893
C Orlyn Saner		
Tammy	22,485	904
David K Deamer		
Daisy 29	23,095	895
Larry & David Noss		
49A	25,010	876
Donald C Everitt		
Betty 55	22,881	863

Montgomery Co. DHIA

August 1986

Richard Bechtel, Harleysville, owned the top fat cow for the August Montgomery County DHIA. His 4-year-old Holstein produced 20,021 pounds of milk and 926 pounds of fat.

Name	Brd.	No. Cows	% Days In Milk	Milk Lbs.	3 Fat X Lbs.
Harold K Halteman	3	69.6	88.6	20,682	738
Merrill Mest	B3	30.2	86.7	17,988	725
Durrell & Dawn Delp	3	46.8	86.6	20,438	714
Arlin Halteman	B3	68.0	90.9	18,741	705
Patty-Run Dairy Farm	B3	57.1	87.8	19,215	698
Richard A. Bechtel	B3	71.7	88.8	18,833	684
Fred Seipt Family	3	118.4	89.4	18,623	683
Du Mar Farm	3	57.7	86.7	19,548	678
Edward N Wissner	B3	41.9	84.4	18,850	674
Gehring Bros	B3	53.4	87.8	18,452	672
David P Longacre	B8	98.6	87.4	18,670	671
George Seneko Jr	3	61.9	91.6	18,968	667

The following cows completed lactations over 850 pounds of fat during August

Name	Brd.	% Days In Milk	Milk Lbs.	Fat Lbs.
Du Mar Farm				
Rita 34	3	5-08	305	27,642 864
George Seneko				
Teddy	3	7-10	305	25,076 875
Richard Bechtel				
25R	3	4-04	305	18,787 850
131Y	3	4-03	305	20,021 926

HOOPER

C.B. HOOPER & SON INC.
INTERCOURSE, PA
(717) 768-8231

The Saving Place

HOOPER

HOOPER EQUIPMENT INC.
MIDDLETOWN, DE
(302) 378-9555

WE SHIP PARTS DAILY

Via UPS - PPSH - BUS - AIR FREIGHT, ETC.



YOU STAY PUT
Pick Up Your Phone And Place Your Parts Order With Us

CALL US...
It Could Be We Have It

case
Authorized UPS Station

BLOCKING CHUTE

- For safe and easy grooming, washing and clipping cattle
- Expanded metal floor stays cleaner and gives more traction
- Assembles and disassembles quick and easy
- Can easily be moved and loaded by one person

PAUL B. ZIMMERMAN, INC.

Call or Write For Additional Information And Your Nearest Dealer

295 Woodcorner Rd.
Lititz, PA 17543
1 Mile West of Ephrata
Phone: 717-738-1121