

Deutz-Allis Introduces Middleweight Tractor Series

MILWAUKEE, Wisc. — The new 7100 Series tractors from Deutz-Allis are middleweight, fuel-efficient workhorses that will give years of trouble-free performance.

The 7145 tops the series at 145 PTO hp, followed by the 7120 at 122 PTO hp, the 7110 at 110 PTO hp and the 7085 at 85 PTO hp. The at-

tractive appearance of the 7100 Series is the result of straight-forward design principles which combine proven technology with an impressive list of new features.

The Agrotronic on-board computer system allows the operator to accurately track operating functions that were only guessed at

before. The basic system provides a constant display of engine rpms and calls up PTO and ground speed with the touch of a finger. This permits complete control of implements and fine-tuning of planter rates, fertilizer and chemical application.

A more sophisticated monitoring system, the Agrotronic II monitor, is also available. The Agrotronic II monitor combines an on-board computer with Doppler radar to give data on true ground speed, wheel slip, acres per hour and total acreage.

New bar-type rear axles on the 7110 and 7120 tractors provide wheel tread settings from 61.5 inches to 99 inches on 18.4 tires. An optional long axle is available to obtain even wider treads.

Optional all-wheel-drive is available on all four models. The Optitrac front axle differential lock eliminates front wheel spin for maximum traction.

Powermatic high-low power shifting is standard on the 7120 and 7145 models. The Powermatic lets

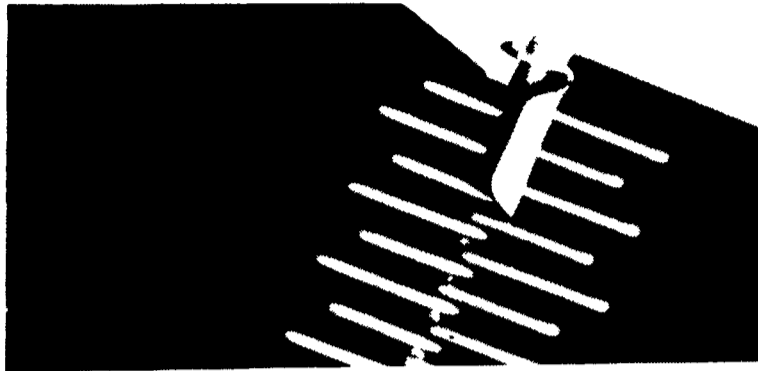
the operator decrease ground speed by 20 percent under load, increasing pulling power by 26 percent.

All models have dual-speed 540 and 1,000 rpm PTOs and all offer the Twin-Power option. Twin-Power doubles work efficiency with a three-point hitch and PTO in

front as well as in back.

The 7100 Series tractors are equipped with Deutz air-cooled diesel engines. The 7085 is driven by a four-cylinder engine, while the others are equipped with six-cylinder versions. The 7110 is naturally aspirated, but the others are turbocharged.

'Smart Lock' For Baler Belts



The Smart Lock splice protector is engineered to increase baler belt splice life by as much as 50 percent, by reducing the need for maintenance.

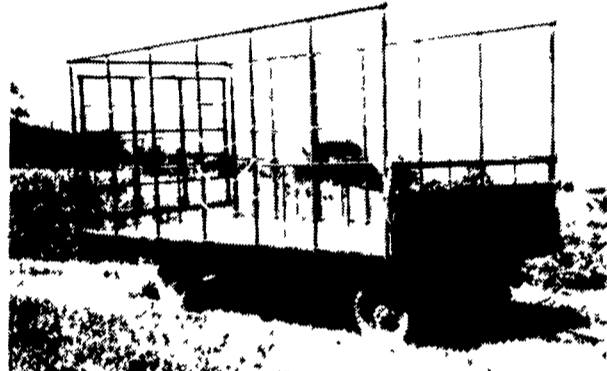
Manufactured by Clipper Belt Lacer Company, Smart Lock creates a reinforced splice that resists belt guide tears, as well as saves wear on end hooks, pins and belts.

The Smart Lock installs over the three end hooks of a belt splice. A nylon-coated cable connecting pin is inserted through the splice. Smart Lock is then crimped over the pin to prevent walkout.



Bar-type rear axles on the Deutz-Allis 7100 series tractors provide a wide range of wheel tread settings.

BEST BUY of the YEAR



- 6" Steel Main Beam
- 2" Vertical Tubing Drilled so that the 1" Horizontal tubing extends Full Length of Wagon
- Front-Side and Rear Loading and Unloading
- 2x8 Pressure Treated Lumber Floor
- 2x6 Oak Cross Beams
- Beds are 8' wide, available in 16, 18 or 21' lengths
- Racks are 90" high.
- NEW FEATURE: 6" Channel across back for pushing wagon without damaging bed

FOR FURTHER INFORMATION, CALL YOUR LOCAL DEALER:

LOST CREEK
IMPLEMENT
Oakland Mill, PA
717-463-2161

MELROSE FARM
SERVICE
Greencastle, PA
717-597-3138

KELLER BROS.
Lebanon, PA
717-949-6501

DUNKLE & GREIB
Mill Hall, PA
717-726-3115

WALTER G. COALE, INC.
Churchville, MD
301-734-7722

TOBIAS EQUIPMENT CO., INC.
Halifax, PA
717-362-3132

NORTHEAST
DISTRIBUTING
West Clifford, Pa.
717-222-9020

VALLEY IMPLEMENT
SALES
Harrisonburg, VA
703-434-9961

CHAMBERSBURG FARM
SUPPLY
Chambersburg, PA
717-264-3533

OXFORD GREENLINE,
INC.
Oxford, PA
215-932-2753

PAUL SHOVER'S, INC.
Loysville, PA
717-789-3117

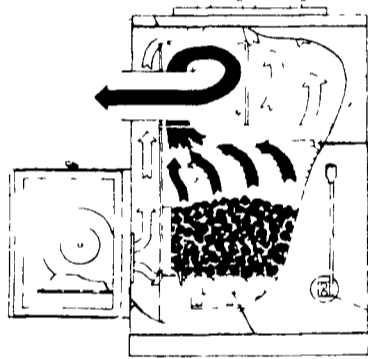
A.B.C. GROFF
New Holland, PA
717-354-4731

CARLISLE FARM
SERVICE
Carlisle, PA
77-243-4419

CLARK'S FARM SUPPLY
Williamsport, PA
717-494-0060



WOOD - COAL - OIL HOT AIR FURNACES AND WOOD-COAL BOILERS



FEATURES:

- * Harman grate system for ultimate wood/coal performance
- * Automatic draft system
- * Heavy steel plate construction
- * Airtight cast-iron doors
- * External shaker lever
- * 3 speed --1000 cfm blower
- * 5-yr limited warranty (includes grates)
- * Log Length 19", 23", & 27"
- * Types of fuel: wood/coal (pea, nut, stove sizes)
- * Option Available Domestic Hot Water Coil

Wholesale To
Heating & Plumbing Trade

WALTZ ENTERPRISES INC.

30 S. Hershey Ave.
(Bareville) Leola, PA 17540
(717) 656-6898

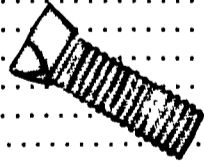
RD 1 Pleasant Valley Rd.
Cogan Station, PA 17728
(717) 998-2539



HIAWATHA FASTENERS

6261 EAST TAFT RD., NORTH SYRACUSE,
NY 13212 PHONE: (315) 452-0033

Nuts - Bolts - Washers.....	*1.10 lb.
High Strength Bolts.....	*1.35 lb.
Grade 5 Plow Bolts.....	*2.10 lb.
Grade 6 Clipped Plow Bolts.....	*2.70 lb.
Dry Wall Screws.....	*2.70 lb.
* 5/8x10 1/2 grade 8 bolts.....	*3.50/ea.
* 7/8x10 grade 8 bolts.....	*5.60/ea.



Trakita Industrial Grade Power Tools

NEW

ANCHORS - NAILS

Hiawatha Fasteners For:

Roller Chain Course & Fine Proof Coil
Grade 8 Bolts Log Chain Proof Coil

We Ship UPS Daily
Call Your
Order In Collect

SANDER-GRINDER
MODEL 9501 BKIT
10000 RPM, 3.5 AMP



List \$119.00
SALE
\$79.00

Business Hours 8 a m to 5 p m Daily
Summer Schedule April thru Oct
Saturdays 9 a m to 1 p m

Manufactured By

CLW MANUFACTURING, INC.

R.D. #2, Box 8
Newburg, Pa. 17240
717-423-6794